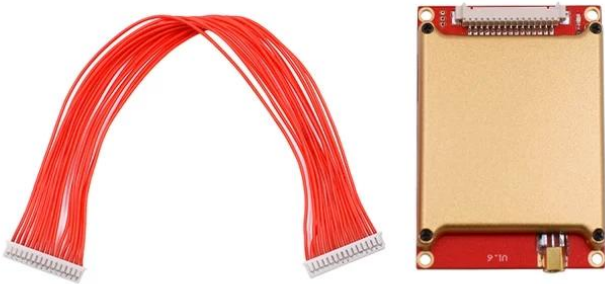


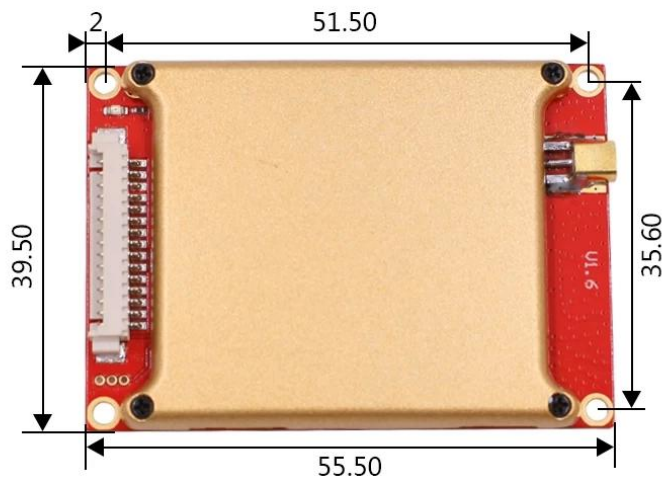


Detailed image

01 Spare parts: 1pc module, 1pc wire cable



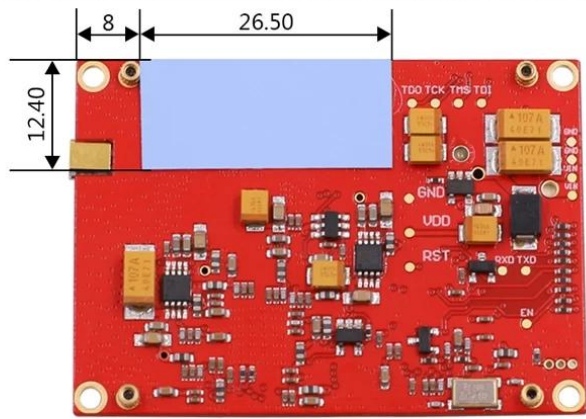
02 Module dimension



Front side

Product technical parameter

Model number	ACM - MU85M
Frequency	865~868MHz (EU),902~928MHz(US)
Protocol	ISO18000-6C9EPC GEN2)
RF power	33dbm (adjustable)
Current Dissipation	1500mA
Inventory speed	200pcs/s
Work mode	answer mode/real-time inventory mode
Read distance	0~15m(depends on antenna and tag)
Power supply	+3.7~5VDC (low power dissipation)
Interface	RS232 (3.3V TTL level)
Antenna ports qty	With one antenna ports
Connector for antenna	SMA
GPIO	2 input and 2 outputs
Firmware upgrading	Support
Operation temperature	-20~+55℃
Storage temperature	-20~+85℃
Size	55.5*39.5*7.6mm
Weight	25g



Back side



PIN1

Host interface

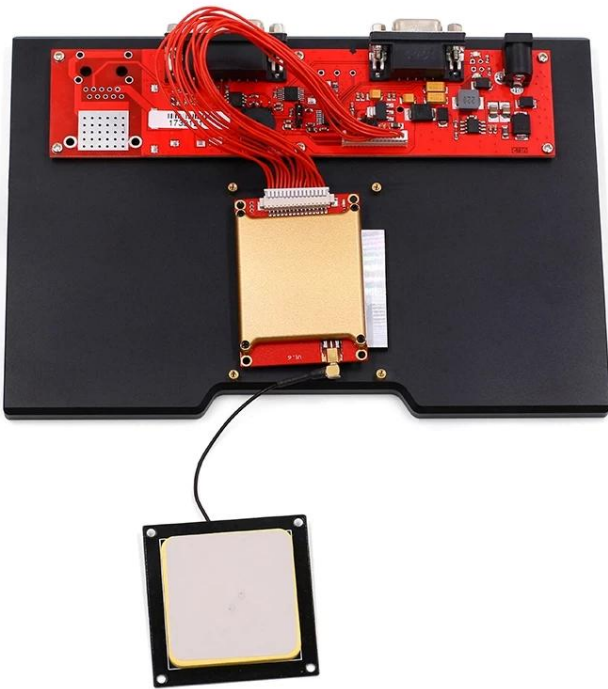
No.	Symbol	Comment
1	GND	Ground
2	GND	
3	VCC	Power Supply
4	VCC	
5	GPO1	General output (3.3V TTL level)
6	GPO2	
7	GPI1	General input (3.3V TTL level)
8	BUZZER	Buzzer driver output, high level effective. Current sourcing over
9	RXD	Serial data input
10	TXD	Serial data output
11	USB-DM	For test only
12	USB-DP	
13	GPI2	General input (3.3V TTL level)
14	EN	Enable. High level effective with internal 10kOhm resistor pulled up to VCC
15	RS485_CTRL	RS-485 direction control

User manual

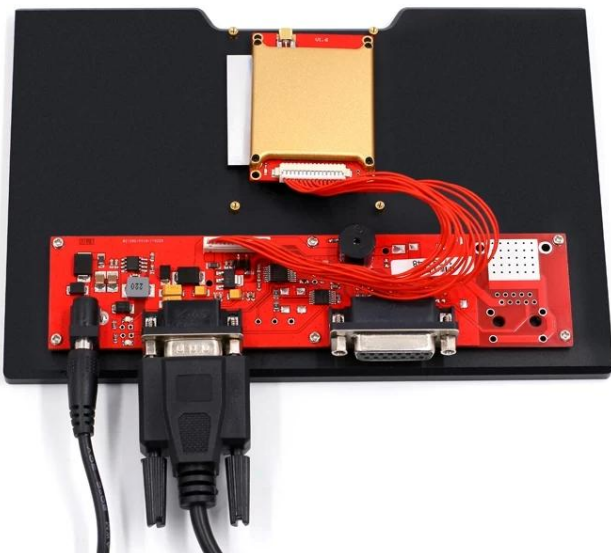
01 Module connect with interface board through wire cable



02 Module connect with antenna through SMA connector



03 Interface board connect with power supply, use RS232 serial port connect with computer for communication, our interface board also with GPIO connector for option.





ACM812A
2-5m UHF
26 RS232 / 485

ACM818A
10-20m UHF
26 RS232 / 485

ACM802A
8-10m UHF
26 RS232 / 485





ACM801A
10-15m UHF
26 RS232 / 485

ACM 8017
UHF
+ WIFI + GRPS

ACM 918K
UHF 4

