

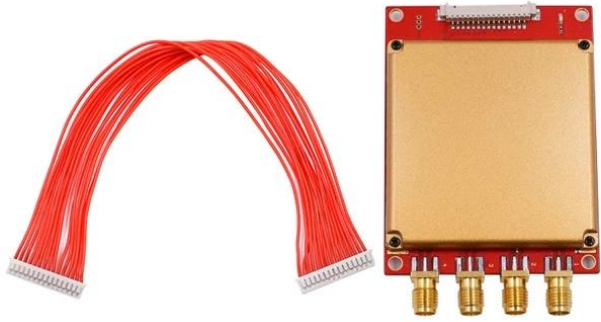


Product technical parameter

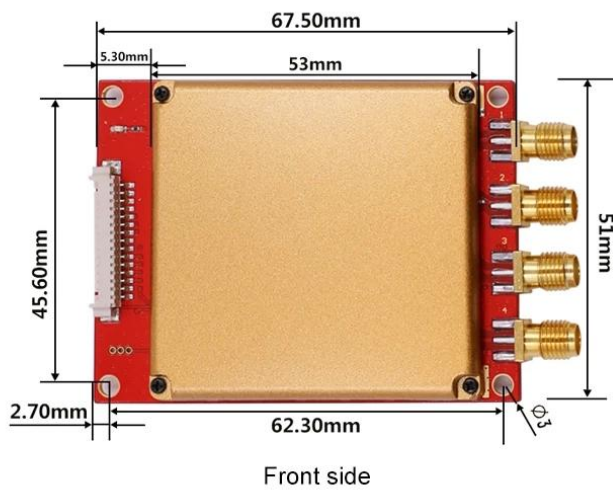
Model number	ACM - MU82M
Frequency	865~868MHz (EU),902~928MHz(US)
Protocol	ISO18000-6C9EPC GEN2)
RF power	33dbm (adjustable)
Current Dissipation	1500mA
Inventory speed	200pcs/s
Work mode	answer mode/real-time inventory mode
Read distance	0~15m(depends on antenna and tag)
Power supply	+3.7~5VDC (low power dissipation)
Interface	RS232 (3.3V TTL level)
Antenna ports qty	With four antenna ports
Connector for antenna	SMA
GPIO	2 input and 2 outputs
Firmware upgrading	Support
Operation temperature	-20~+55℃
Storage temperature	-20~+85℃
Size	67.5*51*7.9mm
Weight	44g

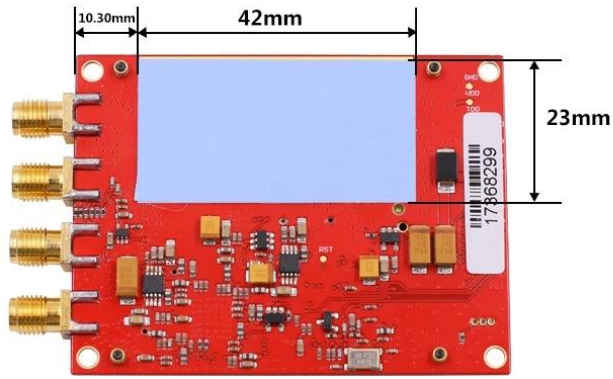
Detailed image

01 Spare parts: 1pc module, 1pc wire cable



02 Module dimension





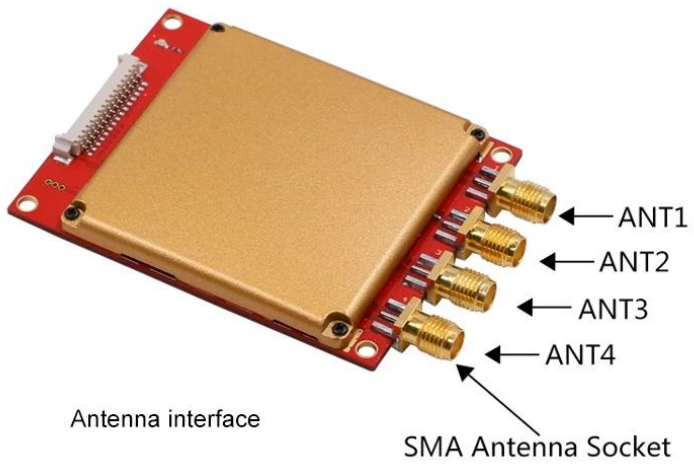
Back side



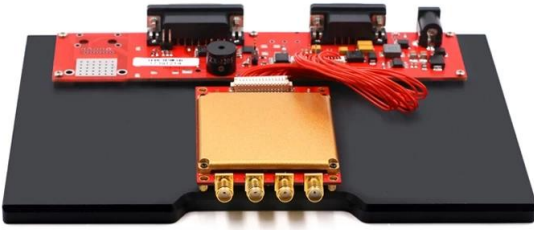
PIN1

Host interface

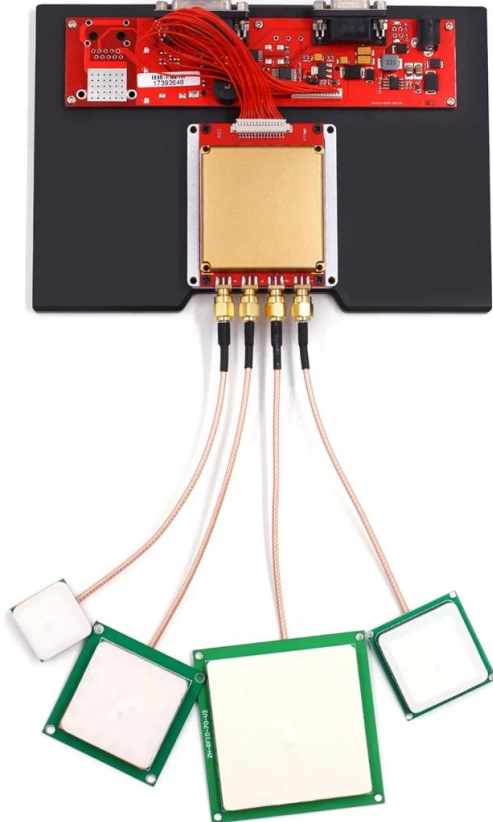
No.	Symbol	Comment
1	GND	Ground
2	GND	
3	VCC	Power Supply
4	VCC	
5	GPO1	General output (3.3V TTL level)
6	GPO1	
7	GPI1	General input (3.3V TTL level)
8	BUZZER	Buzzer driver output, high level effective. Current sourcing over 50mA
9	RXD	Serial data input
10	TXD	Serial data output
11	USB-DM	For test only
12	USB-DP	
13	GPI2	General input (3.3V TTL level)
14	EN	Enable. High level effective with internal 10kOhm resistor pulled up to VCC
15	RS485_CTRL	RS-485 direction control



01 Module connect with interface board through wire cable



02 Module connect with antenna through SMA connector



03 Interface board connect with power supply, use RS232 serial port connect with computer for communication, our interface board also with GPIO connector for option.



Relative products

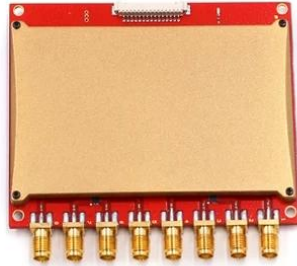
Our R2000 module have three model according different antenna port,there are one port,four ports,eight ports for option.



CF-MU801
with one antenna port



CF-MU804
with four antenna port



CF-MU808
with eight antenna ports



□□□□ uhf □□ □□□□□□, ACM812A□ □□□□, □□□ □□ ACM802A, ACM818A, ACM801A□ □□□□ □□□□. □□□□ □□ □□□□□□. □□ ACM801A□ □□□□ □□ □□ (□ □□ 200 □)□ □□ □ □□□□□. □□□□ □□ □□□ □□□□□□□□.





ACM812A
2-5m □□ □□ UHF □□
Wiegand 26 □□, RS232 / 485

ACM818A
10-20m □□□ UHF □□
Wiegand 26 □□, RS232 / 485

ACM802A
8-10m □□ □□ UHF □□
Wiegand 26 □□, RS232 / 485



ACM801A
10-15m UHF 雙
Wiegand 26 雙, RS232 / 485

ACM 8017
UHF 雙 雙 雙
UHF + WIFI + GRPS

ACM 918K
UHF 4 雙 雙 雙 雙 雙

雙 雙

- 1, 雙 雙 雙 雙 24 雙
- 2, 雙 雙 雙 雙 雙, 雙 雙 雙 雙 雙 雙 雙 雙 雙
- 3, OEM / ODM 雙
- 4, 雙, fashin desing, 雙 雙 雙 雙, 雙 雙 雙
- 5, 雙 雙 雙 :
- 1), 雙 雙 雙 雙 雙 雙 雙 雙
- 2), 雙 雙 雙 雙 雙 雙
- 3), 雙 雙 雙 2-3 雙 雙 雙 雙 雙 雙 雙 雙
- 6, 雙 雙 : 雙 雙 雙 雙 1 ~ 5 雙, 雙 雙 雙 雙 7 ~ 30 雙
- 7, 雙 : 雙 雙 雙 雙 : T / T, 雙 雙, Paypal

雙 雙 雙 雙

- Q : 1. 雙 雙?
- : 雙 雙 雙 雙 雙 雙 雙 雙. 雙 雙 雙 雙 雙 雙 雙 雙 雙 雙 雙 雙 雙 雙 雙 雙.
- Q : 2. 雙 雙 雙?
- : T / T, 雙, 雙 雙.
- 雙 雙, 雙 雙 雙 雙 (DHL, FedEx, TNT UPS 雙) 雙 雙 雙 雙.
- Q : 3. 雙 雙 雙?
- : 雙 雙 雙 雙, 雙 雙 雙.
- Q : 4. 雙 雙 雙 雙 雙 雙?
- : 雙 雙 雙 雙. 5000pcs雙 雙 雙 3-7 雙 雙 100,000pcs雙 雙 7-15 雙
- Q : 5. 雙 雙 雙 雙 雙 雙 雙?
- : 雙 雙 雙, 雙 雙 雙, 雙, 雙 雙 雙. OEM 雙 雙 雙 雙.
- Q : 6. 雙 雙 雙 雙 雙?
- 雙 雙 RFID 雙 / NFC 雙 / RFID keybod / RFID 雙, RFID 雙 雙 雙 20 雙 雙 雙 雙 雙 雙 雙 雙 雙 雙 雙 雙 雙 雙 雙 雙 雙 雙
- 雙

