



□□ **OEM Secukey** □□ **C-Strike 9 T** □□ □□ □□ □□ □□
□□ □□ □□ □□ □□

Y-700A(□□□□)□ □□ □□ □□ □□(Fail Safe) □□ □□□□□. 304
□□□□□□ □□□□□□.
□□ □□□ □□□ 2000kg□ □□□□. Door □□□□ NC□□□□.
□□ □□ □□□ □□□□ □□ 60°C □□ □□ -40°C. □ □□
□□□□ □□□ □□□□ □□, □□ □□ □□ □□□□, □□□□ □ □□ □□ □□, □□ □□ □□
□□□□ □□□ □□□□
□□

□□□□:

-
-
-
-
-
-



3

4

□

□

□

□

□

□

□

□

□

□

□

□

□

□

□

1

□

□

□

□

□

□

□

□

□

□

□

□

□

□

□

□

□

□

□

□

□

□

□

□

□

)



□□ □□

* □□ □□, □□□ □□ □□

* □□, □□ □ □□□

* □□□, □□ □□

* □□ □□ □□, 3□□ □□ □□

* □□□ □□□ □□□□ □□, □□□ □□□□□ □□ □□

* Led □□□□ □□□□ □□ □□□ □□ □□□ □□□□ □ □□□ □□□□.

* □□□□□□ □□□□□ □□□ □□□□ □□ □ □□, □□□□□□□ □□□□□□.

* □□ □□ □□ □□□ □□□ □□□□ □□

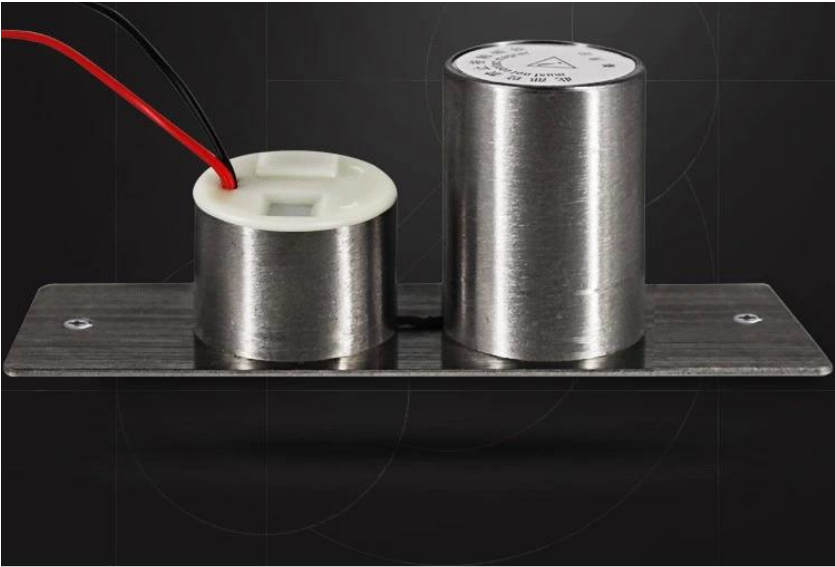
* □□ □□, □□

A: □□ □□□ □□ □□□□□.

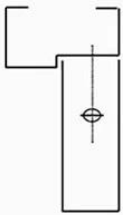
B: □□ □□□□ □□ □□□ □□□□ □□ □, □□□ □□ □□ □□, □□□ □□ □□□ □□□ □□□□ □□□ □□□□□.

C: □□ □□ □□□ □□□ □□□ □□□□□.

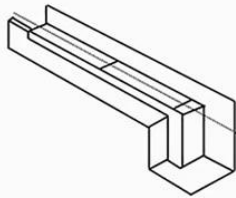
□□□ □□□, □□□ OEM/ODM



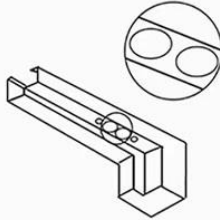
INSTALLATION STEPS



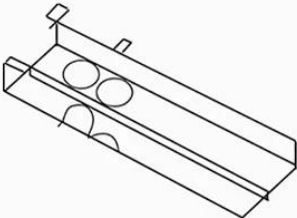
1. Door and door identification center point



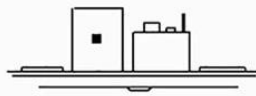
2. Place the hole on the sticker



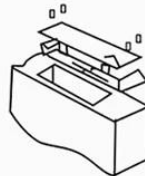
3. Use a hole opener to open the lock hole



4. Mount the mounting hole with the lock body and lock the screw



5. Aim the sensor plate at the lock body to make sure it can be locked



6. The sensor plate is fixed for testing

PRODUCT FEATURES



METAL LOCK BODY

Mini Size

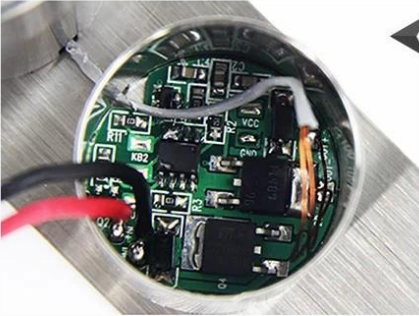
▶▶▶▶▶
**STAINLESS
STEEL LOCK**

Breakpoint circuit
design



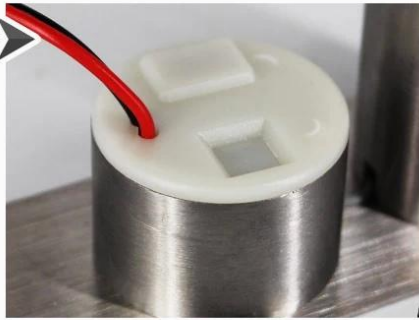
INTELLIGENT PANELS

Lock away from
outside interference

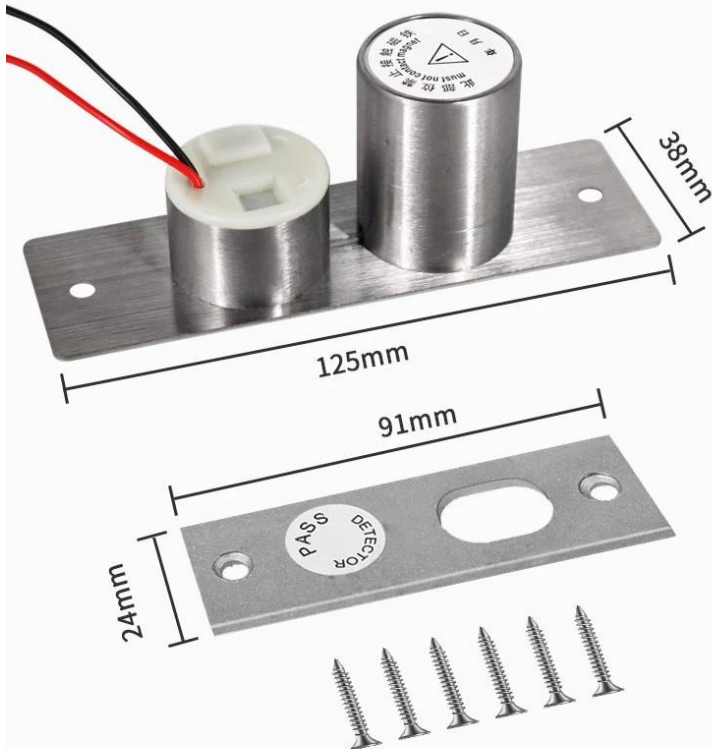


2 WIRES

Simple and Economic



SIZE OF ACCESSORIES





ACM-Y100S 2

100MA / 900MA 2PIN

ACM-Y100S 5

5PIN

ACM-Y500A

205x30x38mm



ACM-Y280

□□ □□ □□ □□ □□(280kg/600lbs)

ACM-Y131

□□□ □□ □, □□ □, PVC □□ □□ □□□□ □□ □□□
(NC/NO)

ACM-Y066

□□□ □□□ □□(□□ □□)
□□ □□: 130x98x41mm□□



1, □□ □□□□ 24□□ □□ □□ □□□□.

- 2, 100% 100% 100%, 100% 100% 100% 100%
- 3, OEM/ODM
- 4, fashin desing, 100% 100% 100%, 100%
- 5, 100% 100%:
- 1), 100% 100% 100% 100% 100% 100%.
- 2), 100% 100% 100% 100%.
- 3) 100% 100% 100% 100% 100% 100% 2-3% 100% 100%.
- 6, 100% 100% : 1~5%, 100% 100% 7~30%
- 7, 100% 100% 100% 100% 100%: T/T, Western Union, Paypal.
- 8, 100% DHL, FEDEX, TNT, UPS, EMS, SEA 100% AIR 100% 100% 100% 100% 100% 100% 100% 100% 100%.

100% 100%

Q: 1. 100% 100% 100%?

A: 100% 100% 100% 100% 100%. 100% 100% 100% 100% 100% 100% 100% 100% 100% 100%.

Q: 2. 100% 100% 100% 100%?

A: 100% 100% T/T, 100%, 100% 100%.
100% 100%, 100% 100%(DHL, FedEx, TNT UPS)100% 100% 100%.

Q: 3. 100% 100% 100% 100% 100%?

A: 100% 100% 100% 100% 100%, 100% 100% 100% 100% 100%.

Q:4. 100% 100% 100% 100%?

A: 100% 100% 100%. 100% 5000pcs 100% 3-7%, 100,000pcs 100% 7-15%

Q:5. 100% 100% 100% 100%?

A : 100%, 100%, 100% 100% 100% 100% 100%. OEM 100% 100% 100%.

Q:6. 100% 100% 100% 100%?

100% 20% 100% RFID 100%/NFC 100%/RFID 100%/RFID 100%, RFID 100% 100% 100% 100% 100% 100%.