



□□ **OEM Secukey** □□ **C-Strike 9 T** □□□□□□□□□□

Y-700A (□□) □□□□□□□□□□□□□□□□□□ 304 □□□
 □□□□□□ 2000kg □□□□□□□□NC□□□□
 □□□□□□□□□□□□□□□□□□□□□□□□□□□□□□□□□□
 □□□□□□□□□□□□□□□□□□□□□□□□□□□□□□□□□□□□
 □□

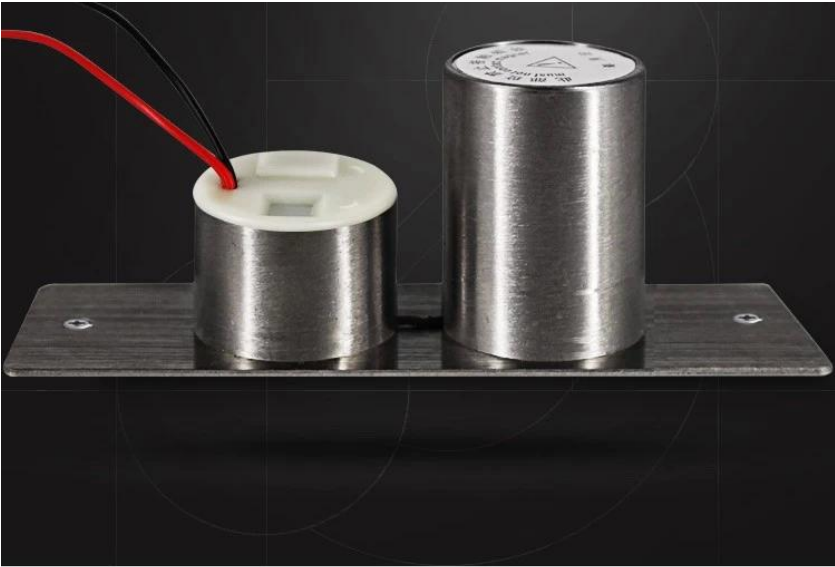
□□□

□
 □
 □
 □
 □
 □
 □ □
 □ □
 □
 □
 □
 □ □
 2
 5
 0
 8
 □ □
 □ □
 □
 2 □

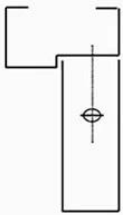


- * □□□□□□□□
- * □□□□□□
- * □□□□□
- * □□□□□□□□□□
- * □□□□□□□□□□
- * □□□□LED□□□□□□□□□□
- * □□□□□□□□□□□□□□□□□□
- * □□□□□□□□□□
- * □□□□□□□
- A□□□□□□□□
- B□□□□□□□□□□□□□□□□□□□□□□□□□□□□□□□□□□
- C□□□□□□□□□□□□□□

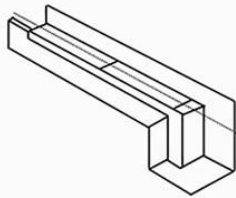
□□□□□□□□ OEM/ODM



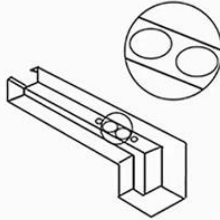
INSTALLATION STEPS



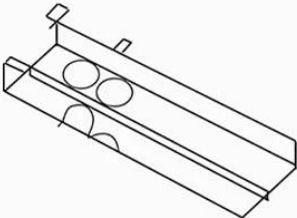
1. Door and door identification center point



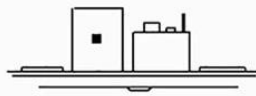
2. Place the hole on the sticker



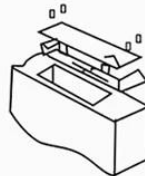
3. Use a hole opener to open the lock hole



4. Mount the mounting hole with the lock body and lock the screw



5. Aim the sensor plate at the lock body to make sure it can be locked



6. The sensor plate is fixed for testing

PRODUCT FEATURES



METAL LOCK BODY

Mini Size

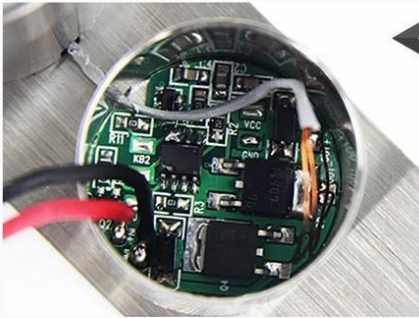
STAINLESS
STEEL LOCK

Breakpoint circuit
design



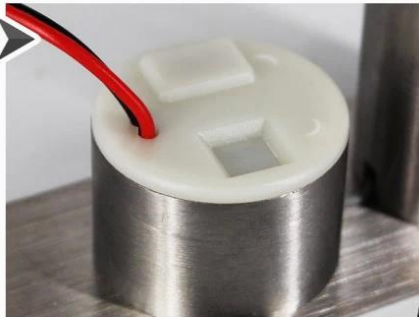
INTELLIGENT PANELS

Lock away from
outside interference

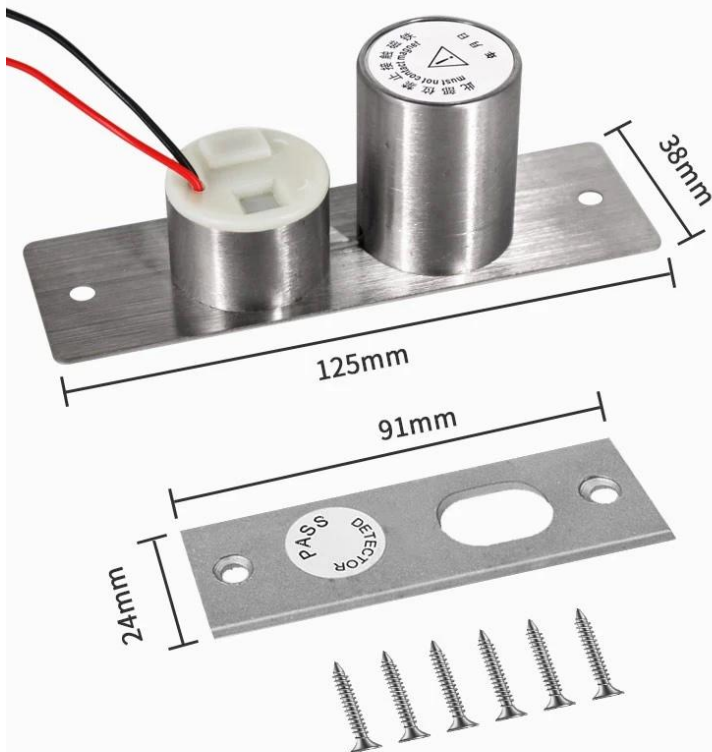


2 WIRES

Simple and Economic



SIZE OF ACCESSORIES





ACM-Y100S 2PIN

□□□□
□□100MA/□□900MA□□□□□2PIN

ACM-Y100S 5PIN

□□□□
□□□□□□□□□□□5PIN

ACM-Y500A

□□□□□□□□□□/□□□□□□205x30x38mm



ACM-Y280

□□□□□□□□280□□/600□□

ACM-Y131

□□□□□□□□NC/NO□□□□□□□□□□PVC□

ACM-Y066

□□□□□□□□□□
□□□□130x98x41mm□□



- 1□□□□□□□□24□□□□□□
- 2□□□□□□□□□□□□□□□□□□□□□□□□

3 OEM/ODM

4

5

1)

2)

3) 2-3

6 : 1~ 5 7~30

7 T/T Paypal

8 DHL FEDEX TNT UPS EMS



1.

A:

2.

: T/T Paypal

DHL FedEx TNT UPS

3.

A:

4

: 5000 3-7 100,000 7-15

5

A: OEM

6.

20 RFID/NFC RFID rfid