



**Cerraduras eléctricas de la tarjeta magnética  
de la cerradura electromagnética de la puerta  
única impermeable de 280kg para la  
cerradura al aire libre**

Cerradura magnética impermeable con fuerza de sujeción de 600  
lb (280 kg) para una puerta

2  
L  
F  
4  
h  
W  
i  
0  
d  
M  
b  
h  
b  
h  
i  
m  
e  
t  
r  
o  
)  
1  
9  
L  
x  
l  
P  
L  
a  
4  
5  
W  
E  
a  
f  
h  
a  
h  
i  
r  
h  
m  
e  
t  
r  
o  
)  
F  
u  
2  
B  
k  
g  
d  
6  
b  
i  
p  
e  
a  
s  
o  
n  
:



B  
l  
o  
q  
u  
e  
a  
r  
e  
s  
S  
a  
h  
b  
s  
h  
a  
h  
N  
D  
/  
N  
C  
/  
C  
O  
M  
/  
+  
/



E  
l  
r  
o  
j  
o  
m  
u  
e  
s  
t  
r  
a  
d  
e  
s  
b  
l  
o  
q  
u  
e  
P  
E  
D  
:  
e  
l  
v  
e  
r  
d  
e  
m  
u  
e  
s  
t  
r  
a  
b  
l  
o  
q  
u  
e  
a  
d  
o  
P  
e  
s  
g  
C  
e  
r  
t  
i  
C  
E  
M  
A  
c  
i  
o  
n  
:  
I  
m  
p  
e  
r  
i  
u  
m  
a  
b  
l  
e

## Avance del producto

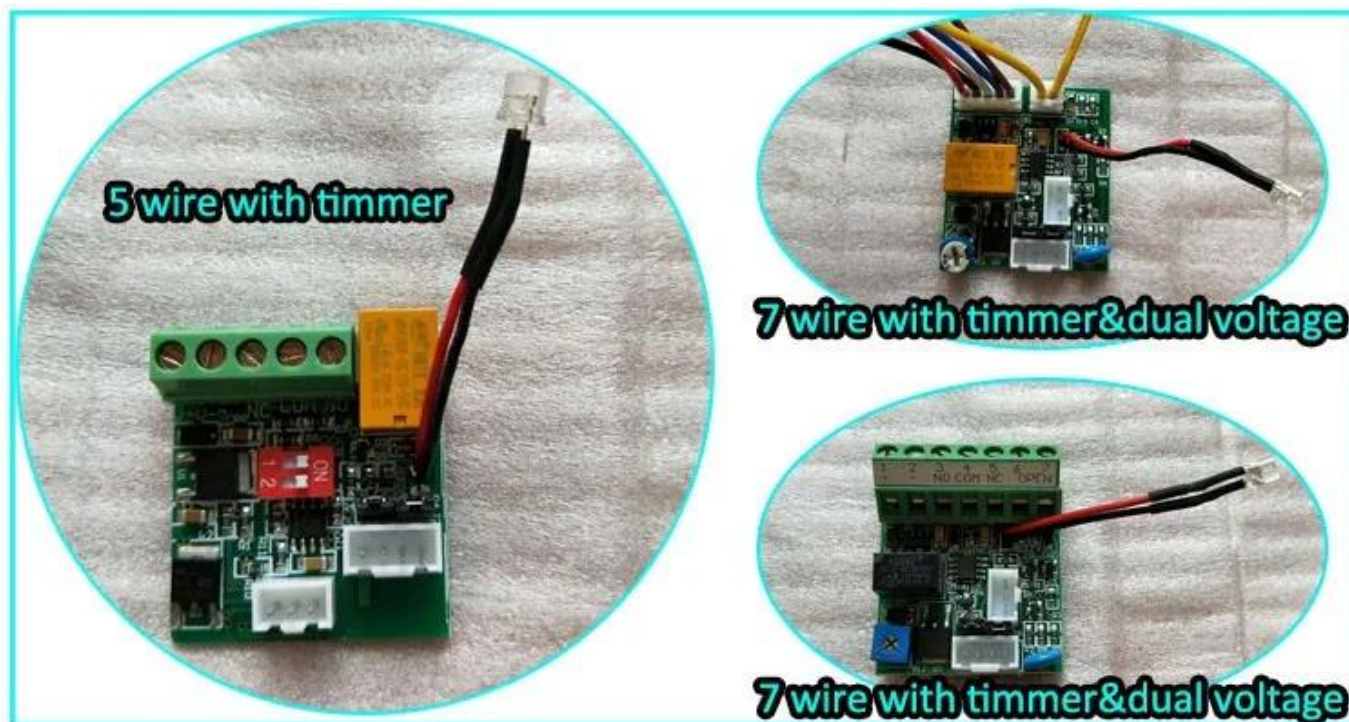
- Prueba de carga colineal 280 kg, 600 libras.
- Doble voltaje 12 o 24 VDC (opcional).
- El voltaje estándar es de 12 V CC cuando está terminado.
- MOV proporciona protección contra corriente inversa.
- Adecuado para puerta de madera, puerta de vidrio, puerta de metal, puerta a prueba de fuego.
- LED Indica el estado de la puerta.
- Sensor de estado de bloqueo (NO / NC / COM)
- Sensor de estado de puerta (NO / NC / COM)
- Magnetismo Anti-Residual diseñado.
- Material de alta resistencia, carcasa de aluminio anodizado.
- Diseño sin avería mecánica.
- Aumente la fuerza de sujeción, carcasa aislante dual.
- Certificado CE de la Unión Europea, Certificado MA de la Oficina de Seguridad Pública de China

Imágenes detalladas, OEM / ODM disponibles



Nuestra cerradura tiene luz LED para mostrar la estatua de trabajo, la luz es verde cuando está bloqueado, rojo cuando está desbloqueado . La estatua de luz se puede cambiar.

ACM-Y280W tiene salida de señal. La placa PCB se puede personalizar. Podemos hacer la cerradura con doble voltaje de 12v y 24v y con conexión de 7 cables. La siguiente foto es la placa PCB opcional. Si desea personalizar el bloqueo, díganos su solicitud detallada, le enviaremos su cotización detallada después de conocer todos sus requisitos.



## Garantía de calidad

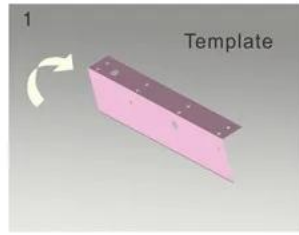
- El servicio de garantía será respetado si el daño no es causado por humanos, ACM Goldbridge proporciona 2 años de garantía para productos relacionados.
- Por el contrario, ACM Goldbridge cobrará más si se repara.
- Más información, navegue por nuestro centro de servicio.

## Diagrama de instalación

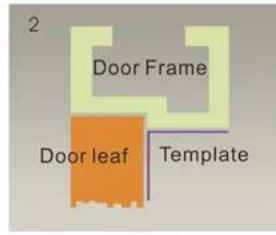


# STANDARD INSTALLATION STEPS

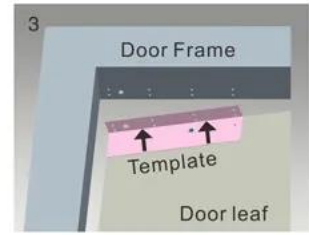
Professional guidance, Rest assured



1 Fold the plate to 90° .



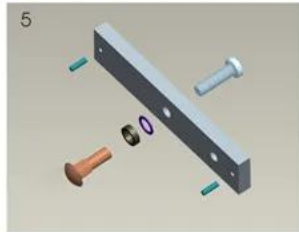
2 Close the door first, then place the upper side of template on door frame, while adjust the left side next to the door leaf.



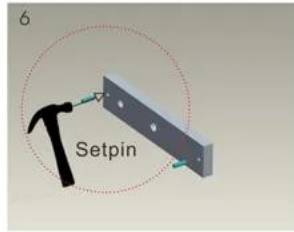
3 Mark screw positions of armature plate and magnetic lock on door leaf and door frame respectively.



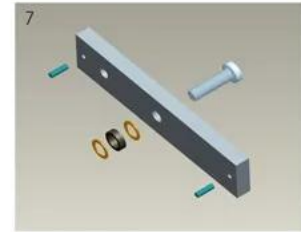
4 Drill holes based on the marked positions.



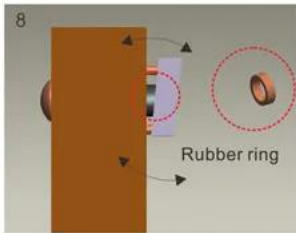
5 Make a combination based on the picture.



6 Strike the pin into the armature plate slightly (to avoid movement).



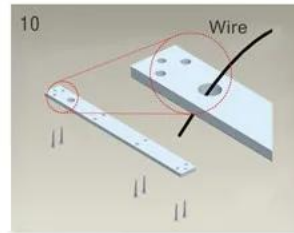
7 Make a combination based on the picture (add washer accordingly). The rubber ring must be added.



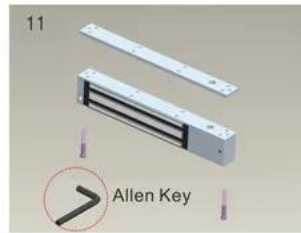
8 Place the rubber ring between armature plate and door leaf.



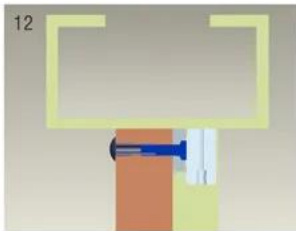
9 Use Allen key to remove the mounting plate from lock body.



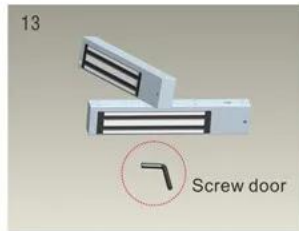
10 Fix the mounting plate on the door frame according to the holes drilled earlier.



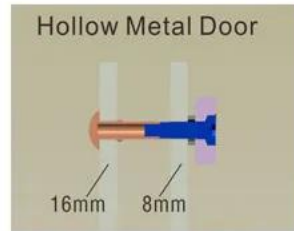
11 Use Allen key to screw the lock body on the mounting plate.



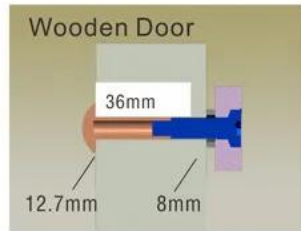
12 Close the door to test holding force. The angle between armature plate and magnetic lock can be adjusted by adding or reducing washers.



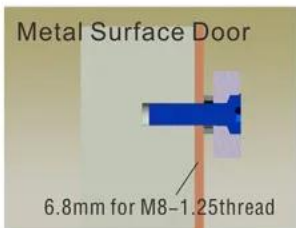
13 After all the appropriate procedures, the holding force can be maximized. Finally, fix the tamper screw.



Hollow Metal Door  
Drill a hole  
Inside: Diameter is 8mm  
Outside: Diameter is 16mm



Wooden Door  
Drill a hole  
Inside: Diameter is 8mm  
Outside: Diameter is 12.7mm



Metal Surface Door  
6.8mm for M8-1.25thread  
Inside: Drill a hole diameter is 8mm folding the plastic straight pin

## Notice:

Thickness of Door Leaf:

350LBS: 44mm

600LBS: 50mm

800LBS: 48mm

1200LBS: 46mm

## Embalaje y entrega

### Forma de envío

Tenemos una fuerte cooperación con DHL, FEDEX, TNT, UPS, EMS, Forwarder by SEA y By AIR  
También puede elegir su propio transportista.

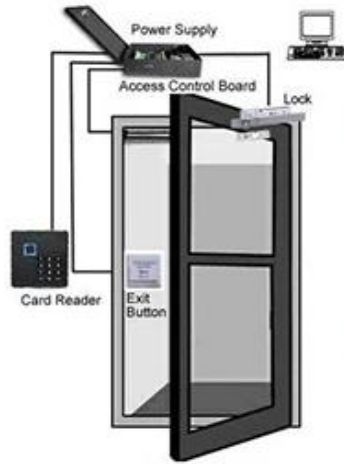
### embalaje

Embalaje de bloqueo magnético: 1 unidad por caja, 10 piezas por caja,  
Tamaño de la caja: 35 \* 30 \* 16 cm, Peso bruto: 26 kg. 50 cajas por palet



## You May Need

### Complete Door Access Control Solution Provider



RFID Card



RFID Key fob



RFID Wristband



RFID Reader



Long Distance  
UHF Reader



Access Control  
Reader



**Biometric Controller**



**RFID Controller**



**Door EM Lock**

## WHY CHOOSE US?

- **Long History & High Reputation**

Founded in 1999. Great Creativity Group dedicates in R&D, producing and sale of RFID products and Plastic Card. We own 12,000 square meters factory, 3000 square meters office and 8 branches so far.

- **Advanced Equipments & Ultimate Production Ability**

2 Modern high standard production lines with monthly output 30,000,000 pcs cards. Brand-new CTP machines and Germany Heidelberg offset printing machines. 10 sets of compounding machines.

- **Self R&D Customization**

Our company offering management application project, equipment application, scheme and personalized RFID end product.

- **Strict Quality Control**

Strict QC System from raw material to finished products. We have passed certified ISO9001, SGS, ROHS, EN-71, BV etc. We promise all products will be examined strictly and we ensure that the products we deliver to you with top quality.

## ABOUT GOLDBRIDGE

As a one of leading manufacturer and exporter of RFID products in China, We have been in this field for 20 years already. We have rich production and exportation experience on RFID products. Our strength products are: rfid card, rfid Keyfob, rfid wristband, rfid tag and various rfid reader. We are also the access control solution provider.

[MORE >>](#)





## ABOUT OUR FACTORY

Established in 1999, Shenzhen Goldbridge has witnessed the technological innovation from rfid card to rfid tag, the overall change of market products in the past 20 years, and registered "Shenzhen Goldbridge Industrial Co., Ltd." in 1999.

At present, Goldbridge has developed into a National High-Tech Enterprise, which is specialized in the integration of production, market and research. Starting from the PVC cards and RFID cards factory with only 66 workers, Goldbridge has accomplished the successful transition from traditional manufacturing industry to IOT technology enterprise (RFID technology development).



With the accumulation of dozens of software copyrights and utility new inventions and patents, Goldbridge has been rewarded as "National High-Tech Enterprise", "Shenzhen High-Tech Enterprise", and has become an integrated enterprise which focuses on research, production and market. Meanwhile, by adopting the "Military + School + Family" corporate culture concept, accompanied by the continuous innovation of business model and marketing model, plus the B2B, B2C platform and excellent sales team, Goldbridge sells its products all over the world.



# Honers & Certificates



## FAQ

**Q** Do you accept Trade Insurance ?

Yes of course, please click [here](#) to issue a trade insurance order.

**A**

**Q** Do you offer a customized sourcing service ?

**A** Yes please contact our sales team directly.

What format files shall we send for printing?

Adobe illustrator would be best, cdr, Photoshop and PDF files are also OK.

**Q**

**A**

**Q** How long is your warranty time?

**A** Function warranty time is 3years, printin warranty time is 1year.

You may negotiate with our sales team when ordering.

**Q** Do you own your own factory?

**A** Yes we have 3000 square meter workshop for RFID/NFC products.

**Q** Could I get the free sample for testing?

**A** Yes, in order to show our sincerity, we could support the free sample to you for testing..

**Q** Do you also supply OEM service?

**A** Yes, Since we keep professional manufactory with own moulding line and product line, so you could put your LOGO on our products to make them unique