

Description des produits

Description des produits

UNBouton de sortie de porte pour le système de contrôle d'accès, exit tactile étanche mais
Fonctionnalité:

- Pas de capteur de sortie sans contact / touche (détection diffus)
 - Technologie optique / infrarouge
 - Plaque en acier inoxydable IP-55 Ingress Protection / Sus 304
 - Convivial (protection saine)
 - Sans les maladies contagieuses réparties
 - Plage de détection: 0,1 à 10 cm
 - Sortie de relais normalement ouverte / normalement ferme / commune
 - Indicateurs LED jumeaux pour la veille des capteurs ou approché:
- (1) Compte

Détails Images

Détails Images



Whatsapp: +86-13554918707
E-mail: sales@goldbridgesz.com
Website: www.goldbridgesz.com

Waterproof Exit Button

Stainless steel panel /IP66 waterproof





Stainless Steel Door Release Button

Waterproof
IP67

PH: +86-13554918707
E: sales@goldbridgesz.com
W: www.goldbridgesz.com



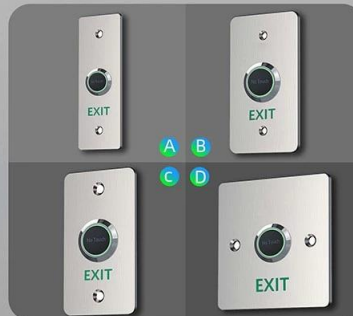
Power Supply: 12V-24DC
Output Contact: NO/NC/COM

Panel Material: 1.8mm Thick Stainless Steel
Mechanical Life: 500,000 tests

Operating temp: -20°C ~ +55°C(14-131F)
Suitable Humidity: 0-95% (relative humidity)



www.goldbridgesz.com



A K841-A (115x40mm) B K841-B (86x50mm)
C K841-C (115x70mm) D K841-D (86x86mm)

Touchless

Infrared Sensor Exit Button

Power Supply: 12V-24DC
Output Contact: NO/NC/COM
Panel Material: 1.8mm Thick Stainless Steel
Mechanical Life: 500,000 tests
Operating temp: -20°C ~ +55°C(14-131F)
Suitable Humidity: 0-95% (relative humidity)

PH: +86-13554918707
E: sales@goldbridgesz.com

Parameurs de produits

Numéro de modèle	ACM-K841
Nom de produit	Interrupteur de bouton de sortie sans toucher
Matériel	Acier inoxydable
Taille du produit	86 * 86 mm
Tension d'alimentation	12VDC
Sortie de contact	NON / NC / COM / LED
Courant maximum	3A / 125-250VAC
Test d'endurance	100 000 fois
Installation:	Cadre de porte creuse (installation dissimulée)
Paramètres d'emballage	100pcs / 15kg / 51 * 43 * 33cm / ctn

Détails des produits

Touchless Exit Button Introduction

NO Touch Style Exit Button;
 NO/NC/COM;
 5-15cm induction distance;
 Stainless steel panel/customizable;

► Features

- Wide Voltage DC 12-24V
- Sensitive Distance 5-15cm
- NO/NC/COM
- Standby Blue LED, Active Green LED
- Laser texture, Not discolor

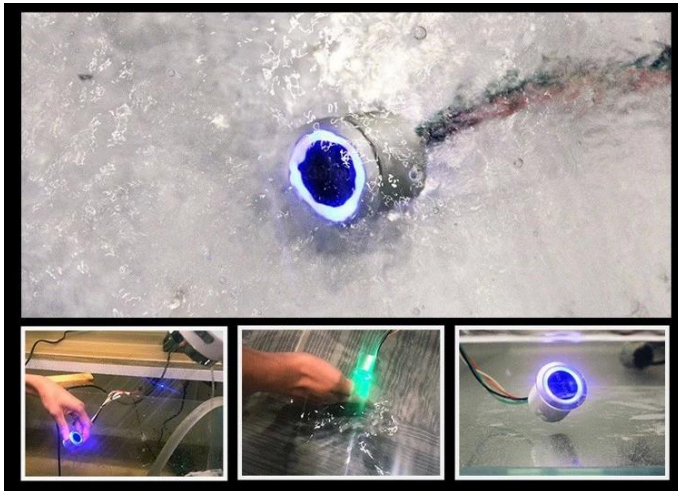
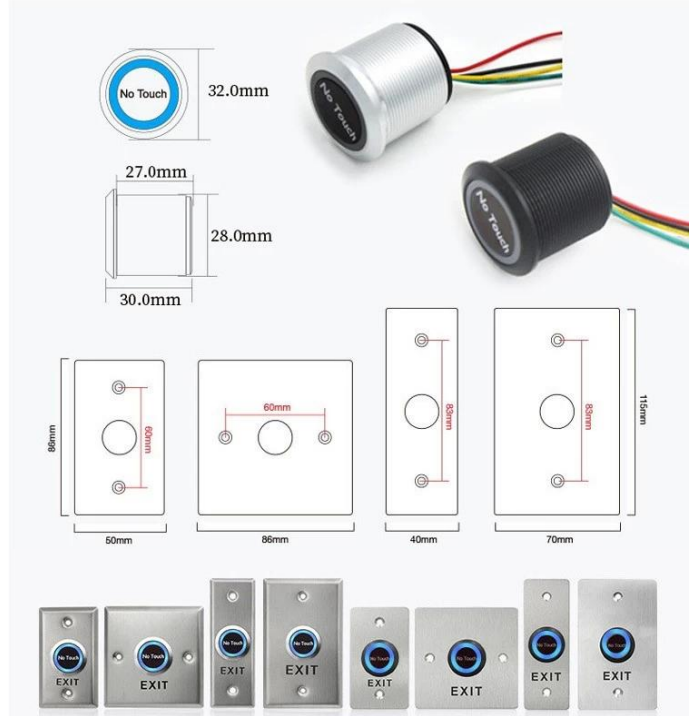
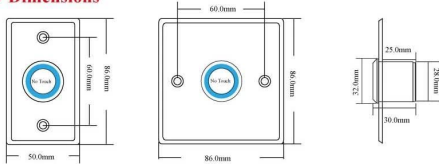


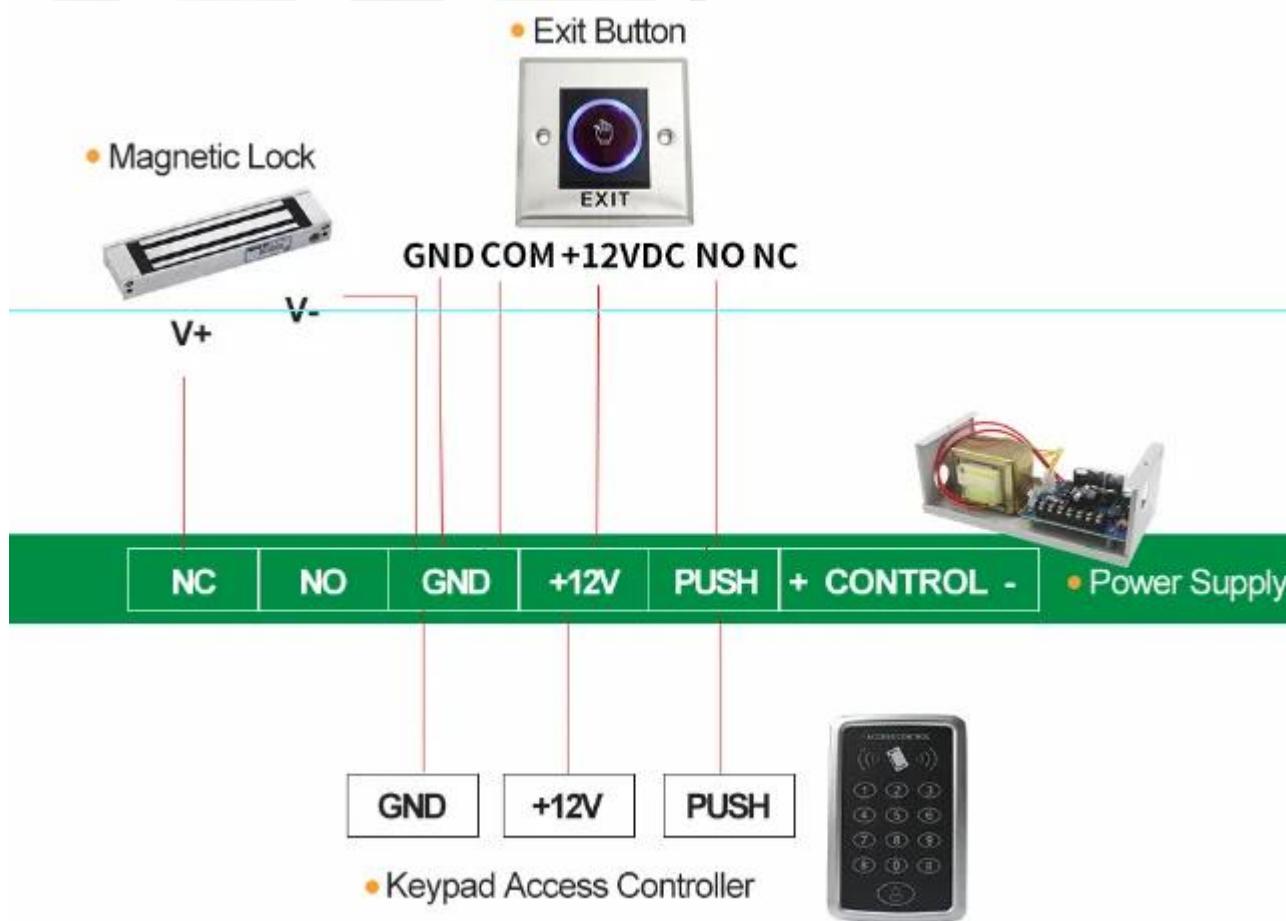
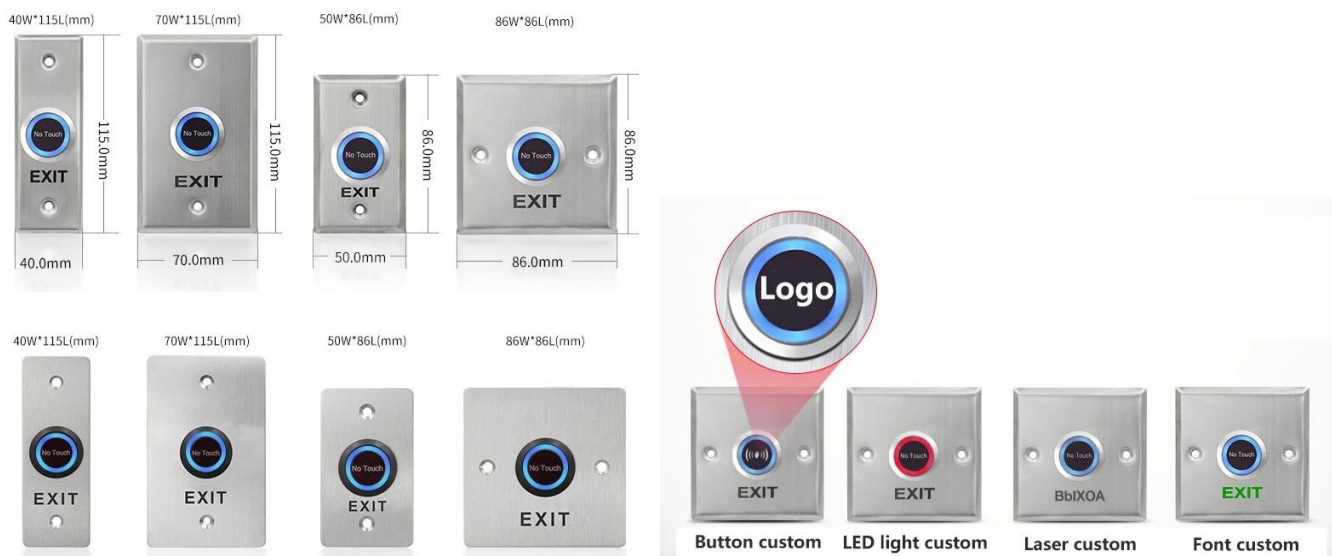
Model	ACM-K841-A		ACM-K841-B		Side
	86*50mm		86*86mm		
View	Front	Back	Front	Back	
Photos					

► Product Parameter

Model	ACM-K841-A	ACM-K841-B	Material	Stainless steel
Size(mm)	86L*50W*25H	86L*86W*25H	Panel logo	Customizable
Weight(KG)	0.08	0.1	Mechanical Life	500,000 Tested aging test qualified
Power Supply	DC12-24V		Accessories	Optional Back Box
Output Contact	NO/NC/COM		Operating Temp	-20°C~-55°C(-4-131F)
Sensitive Distance	5-15CM		Operating humidity	0-95% (RH)
LED Indicator	Standby blue, Response green. (Customizable)		Package Quantity	1 PCS/box, 100 PCS/case.

► Dimensions





Recommander des produits

Recommander des produits
 Système de verrouillage des casiers
 Système de verrouillage de la porte de l'hôtel
 Système de verrouillage intelligent du bureau à domicile
 Système de contrôle d'accès
 Système de parking

Produits connexes



EXIT BUTTON

Email: sales@goldbridgesz.com



K6A **K6AL** **K6D** **K6DL** **K6DW** **K4A** **K4AL**
91x28x20mm 115x70x25mm 115x70x25mm 115x70x25mm 86x50x33mm



K6B **K6BL** **K4B** **K4BL**
86x86x38mm 86x86x38mm 86x86x33mm 86x86x33mm



K14E **K14EL** **K14F** **K14FL** **K14A** **K13AL** **K14** **K14DL**
115x40mm 115x70mm 115x70mm 115x40mm 115x70mm 115x70mm



K14B **K14BL** **K13B** **K13BL** **K13BE**
86x50mm 86x50mm 86x86mm 86x86mm 86x86mm



K13AB **K13A** **K13D** **K13BD** **K14C** **K14CL**
115x40mm 115x70mm 86x50mm 86x86mm 80x30x24mm 80x30x24mm



K15A **K15AL** **K15B** **K15C**
53x53x25mm 53x53x25mm 53x53x25mm 53x53x25mm



K7A **K7B** **K8A** **K8BL** **K4AC** **K4AD**
91x28mm 115x70mm 86x86x38mm 86x86x38mm 86x86x38mm 86x86x38mm



K6AM **K6BM** **K6CM** **K6DM** **K15BG** **K15BR**
115x40mm 115x70mm 86x50mm 86x86mm 53x53x25mm 53x53x25mm



K14BR **K14BG** **M40** **M70** **M50** **M86**
80x30x25mm 80x30x25mm 115x40mm 115x70mm 86x50mm 86x86mm

TOUCH BUTTON

Email: sales@goldbridgesz.com



K9A **K9B** **K40A** **K40B** **K40C**
86x86x20mm 86x50x20mm 86x86x18mm 86x86x18mm 86x40x18mm

NO TOUCH EXIT BUTTON



K2B **K2A** **K9C** **K10A**
86x86x35mm 115x70x25mm 86x86x11.5mm 86x86x14mm



K201G **K201** **K406** **K-WS**
92x92x33mm 113x63x20mm 80x32x23mm 80x80x28mm



K505 Capacitive 86x86x14mm **K505W** Capacitive 86x86x14mm **K505MH** Infrared 86x86x14mm **K505MHW** Infrared 86x86x14mm



K841A 115x40mm **K841C** 115x70mm **K841B** 86x86mm **K842A** 115x40mm **K843A** 115x40mm

PLASTIC BUTTON

Email: sales@goldbridgesz.com



K1 86x86x25mm **K1-1** 86x86x24mm **K1-2** 86x86x25mm **K1-3** 86x86x20mm **K11A** 76x23x14mm



P86 86x86x35mm **P77** 77x77x45mm
Rated Current: 40A, Power off: 20s delay

EMERGENCY DOOR RELEASE

Email: sales@goldbridgesz.com



K3R 86x86x50mm **K3Y** 86x86x50mm **K3G** 86x86x50mm **K3W** 86x86x50mm



K3RR 86x86x50mm **K3RG** 86x86x50mm **K3** 87x87x60mm **Transparent**



K4G LED/Buzzer Red **K4GB** LED/Buzzer Green **K4GL** Without LED 90x93x45mm **K4RG**

20+ YEARS EXPERIENCE

OEM & ODM

ACCESS CONTROL SYSTEMS ONE STOP SOLUTION PROVIDER

Goldbridge is Top 10 China Manufacture On Alibaba, Specializes In Provide Kinds Of RFID/NFC Cards, FID Tags, RFID Card Reader, UHF Reader, Access Control System, Electromagnetic Locks, etc Since 1999



Customized Services



Quality Assurance



Fast Delivery



Best After-Sales Service

ADVANTAGE



WHY CHOOSE US?

- 1 FAST DELIVERY** Faster delivery by air by express. (DHL, UPS or Fedex)
- 2 LONG HISTORY** 20 years experience in RFID & Access Control industry
- 3 OEM ACCEPTABLE** 20 years OEM&ODM experience for 1000 + VIP client from US and Europe
- 4 HIGH QUALITY** Design and manufacture high quality products with 30 R&D engineers.



Supplier's Company

OUR FACTORY

1 Access Control and RFID Reader Production Line



- **Access Control and RFID Reader Production Line :**
- Monthly production quantity is up to 50,000pcs , We are Provides OEM&ODM services including product research and development, LOGO printing, customized.etc

2 Door Lock Production Line



- **Electromagnetic lock & Smart Door Lock Production Line :**
- Monthly production quantity is up to 100,000pcs ,
- Our factory is built with modern manufacture environment, facilities, equipment and professional operation technicians.
- Goldbridge Provides OEM&ODM services including product research and development, LOGO printing and product box customized.

3 RFID Cards & Tags Production Line



- **RFID & NFC Cards & Tags Production Line :**
- RFID Tag, Wristband, Keyfob: 11,000,000pcs (monthly output)
- Four Production Lines For Smart Card, PVC Card, Prelam Sheet: 20,000,000pcs (monthly output)
- Goldbridge Provides OEM&ODM services for LOGO printing, development, customized.

APPLICATION

Bus, supermarket, school, government, hospital, factory



CERTIFICATE



Access Control CE Access Control Rohs EM Lock EMC Certificate EM Lock ROHS Certificate



RFID Card Reader CE RFID Card Reader Rohs UHF Reader CE Certificate UHF Reader ROHS

PRODUCT CATEGORY

RFID / NFC SMART CARD

Be customized according to you need

Fit for systems of transport, E-payment, Access Control, Event, Loyalty, ect.



[View More](#)

ACCESS CONTROL SYSTEM

Security for All: Network Access Control Board ,Standalone Access Controller, Biometric Access Control, T&A time attendance, Facial Access Control



[View More](#)

RFID & LONG RANGE UHF READER

20+ Years of professional Experience in production of rfid uhf hardware

- UHF desktop reader writer,
- UHF integrated reader,
- UHF R2000 fixed reader,



[View More](#)

ELECTROMAGNETIC LOCK

Professional Electric Locks Manufacturer In China

Electromagnetic lock with OEM & ODM since 1999 60KG /110KG /180KG /280KG /350KG /500KG



[View More](#)

FAQ

Q1 How can I place an order?

A1 Click start to order or list your requirement to us by email. Then we will send the offer to you ASAP, after the order confirmed, we will arrange production ASAP.

Q2 What about the payment and shipment?

A2 T/T , Paypal, Western Union etc.

A3 You can choose your agent or via our agent by sea, air or express (DHL,FedEx, TNT UPS etc.)

Q4 How can I get a sample to check your quality?

A4 We could provide the sample to you, pls check the sample cost and freight cost with us.

Q5 How long can I expect to get the goods?

A5 It depends on the quantity and shipping way. You can check with us before ordered.

Q6 Can your products be customized?

A6 Almost all of our products are customized , including the material, size, thickness and printing. OEM orders are highly welcome.

[Contact Us](#)



[BACK TO HOMEPAGE >](#)

