



Hot Sale Office Door Open Entry Security Access Controller 13.56Mhz RFID Keyfob Standalone Touch Metal Keypad Code Reader

- 1.Support Card, PIN, Card + PIN
- 2.Full programming from the keypad
- 3.Connection for external release button
- 4.Contactless RFID transponder technology
- 5.User capacity: 2000users
(each card only can add one password)
- 6.Does not need to connect on the
computer,
it can work alone
- 7.Build in RFID reader.

D
e
s
c
r
i
p
t
i
o
n
o
f
a
n
d
d
a
p
p
e
r
e
t
y
o
n
a
l
P
I
N
"g
o
e
s
a
l
o
n
e
w
i
t
h
e
a
c
h
c
a
r
d

R
M
o
n
i
d
t
5
p
M
h
z
c
o
m
p
a
t
i
b
l
e
c
a
r
d

C
a
b
h
m
e
d
i
c
a
l
p
r
e
s
e
n
t
a
n
t
b
e
c
a
r
d
s
t
a
t
u
s
t
o
o
)

W
C

R
V

9
4
5
V
t
a
g
a
n
d
a
r
d
D
C
1
2
V
)
E
s
e
k
o
n
H
a
y
t
i
m
e

O
o
n
O
K
e
y
T
a
g
)
&
H
a
s
s
w
o
r
d
C
a
r
d
(
K
e
y
T
a
g
)
O
n
l
y
P
a
s
s
w
o
r
d
O
n
l
y

W
Ø
R
K
C
n
g
t
e
m
p
e
r
a
t
u
r
e
S
i
S
ø
Ø
f
i
6
k
æ
M
m
m
h
i
n
e
Ø
a
Ø
a
r
c
i
s
v
a
r
d
s
,
2
c
o
d
e
s

A
An
D
i
e
A
t
F
e
m
p
e
r
a
t
u
r
e
R
%
l
@
%
R
H
e
h
u
m
i
d
i
t
y
P
d
s
g
w
b
P
H
N
c
o
d
e

C
O
N
T
E
N
T
S
E
T
C
A
R
D
,
1
3
.
5
6
M
H
Z
C
A
R
D
F
O
R
C
H
O
I
S
E

①
②
③
e
d
o
n
d
s
(
m
a
j
u
s
t
a
b
l
e
)

Input short-circuit protection timing

Detailed Images

• POWER

• OK



DOOR
BELL



1

2

3

4

5

6

7

8

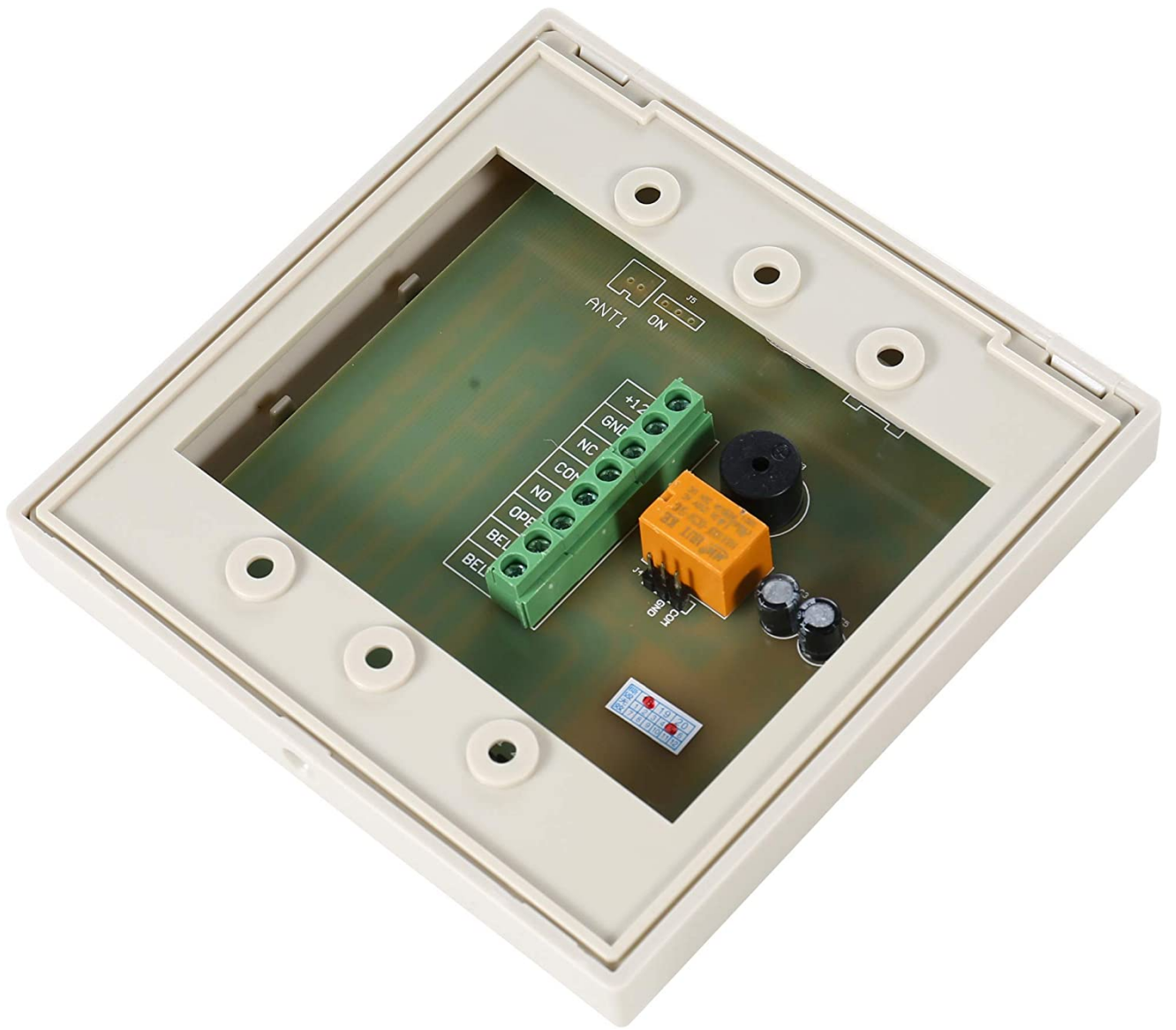
9

*

0

#

RFID ACCESS CONTROL

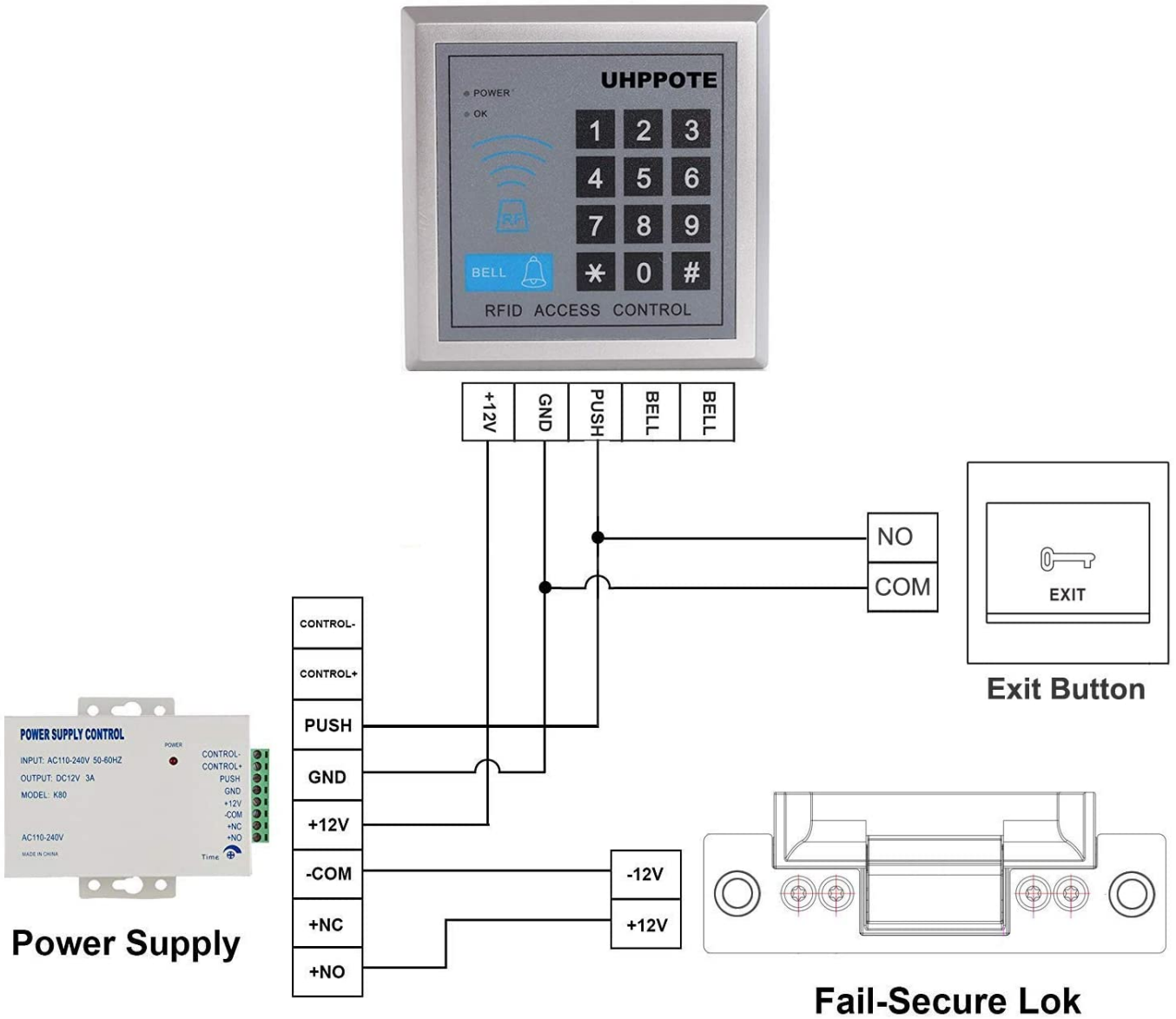




This reader can work as a stand alone RFID access control reader ,also it can work as a normal wiegand 26 reader which can connect to the control board to control the door . Following is the wire connection of the 2 working mode .

Wiring Diagram:

Access Control Keypad



[Click here to order and have your FREE SAMPLE in 3 days!!!](#)

We are professional comprehensive security access control products supplier with 20 years experience, we make sure to offer the best solution of access control system solution! So, send your inquiry details in the below, click "Send" now!

We are looking forward to forming successful business relationships with new clients around the world in the future.