

Products Description

Impinj R2000 chip uhf rfid marathon timing system



Products Description

For timing system, mainly have three solution as below:

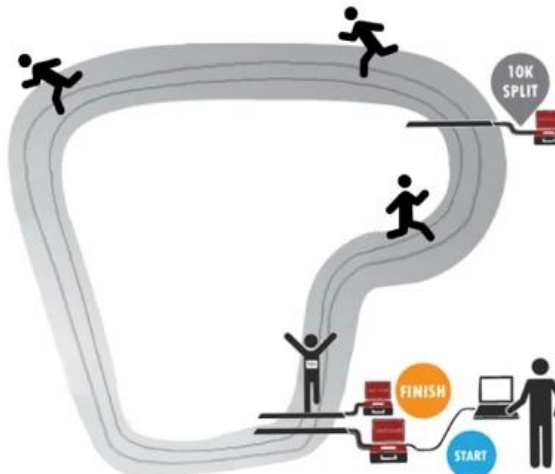
• Solution 1:

Start line and finish line at the same point, runner just run around the circular road for many times.



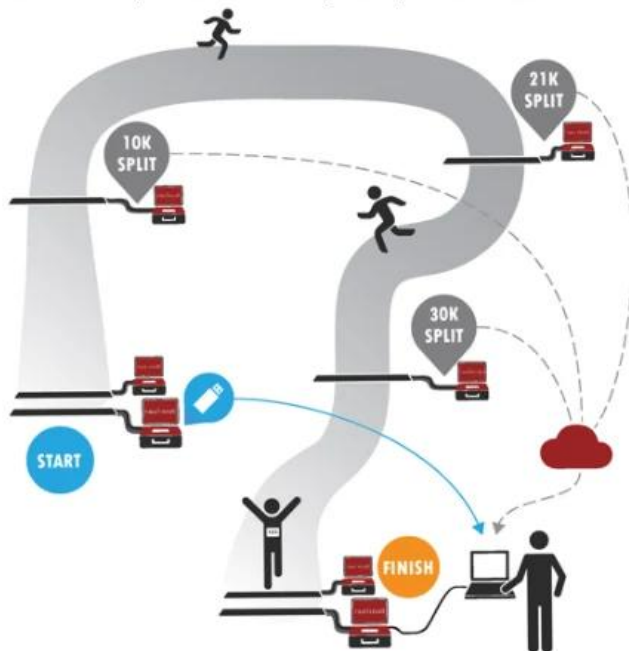
• Solution 2:

Start line and finish line at the same point, but there is one check point in the middle of the running road, runner also run around the circular road.



• Solution 3:

Start line and finish line at different point, there are many check points in the middle of the running road.



System description for different solution:

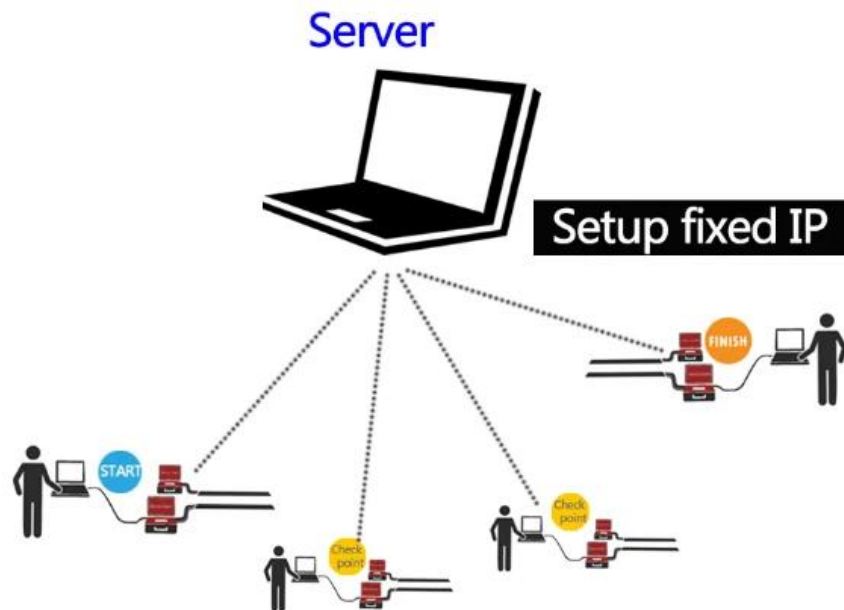
- Solution one:

Just need use one computer connect with reader at the start/finish line, install system on the computer, when reader detect tag, tag information can transfer to system directly.

- Solution two and three:

Can put the server in your company, set one fixed IP or same domain name, install many computer at different point (start /finish line, check point), install client server in the computer, after reader detect the tag, the information can transfer to head server, also can set tag information synchronization every 5s or 10s, then can check the runner information at different point.

We can provide those system



Follow are relative products can use for running race timing system:

Use our UHF RFID R2000 fixed reader connect with UHF floor mat antenna, install at start/finish line, check point, let runner fixed the sports tag on bib number or shoes, when runner pass the line, tag can be detected, then transfer to system, can use UHF desktop reader/writer to program runner information into tags.

Follow are related products specification:



UHF RFID R2000 fixed reader with four antenna ports

Frequency:UHF(865~868MHz/902~928MHz)

Protocol:ISO18000-6C(EPC GEN2)

Interface:RS232/RS485/RJ45

Antenna Port:4 antenna ports

With Impinj R2000 engine

Size:310*210*41mm



UHF RFID USB desktop reader/writer

Frequency:UHF(865~868MHz/902~928MHz)

Protocol:ISO18000-6C(EPC GEN2)

Work mode: read and write

Interface: USB



UHF floor mat antenna

Frequency;UHF(860~868MHz/902~928MHz)

Gain(dBi):6

Polarization: Vertical

Size:1100*550*30mm

Material: rubber



UHF 9dbi panel antenna

Frequency:902-928MHz,865~868MHz

Gain(dbi):9

Polarization:circular

Connector:N-female

Size:257*257*25mm



UHF PVC sports tag

Frequency:UHF

Chip type:UHF Alien H3

Material: Foam

Size:103*30*5mm

Stick on bib number



UHF foam sports tag

Frequency:UHF

Chip type:UHF Alien H3

Material: Foam

Size:103*30*5mm

Stick on bib number



UHF ABS ankle tag

Frequency:UHF

Chip type:UHF Alien H3

Size:55*45*12mm

Material:ABS

Wear on ankle

Application

SCENE APPLICATION



RFID Unmanned Supermarket Management

This application block features a central image of a supermarket aisle with produce. To the left, there are four small inset images: a yellow RFID tag, a black square tag, a roll of white tape, and a light blue square tag.



RFID Vehicle Tracking Management

This application block features a central image of a car at a toll booth. To the right, there are four small inset images: two white rectangular tags, a black square tag with a white logo, and a roll of white tape.



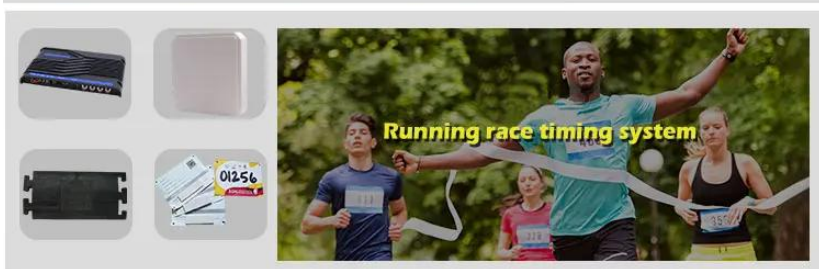
Trash Can management system

This application block features a central image of a yellow autonomous refuse truck. To the left, there are four small inset images: a white rectangular tag, a white square tag, a white rectangular tag, and a green rectangular tag.



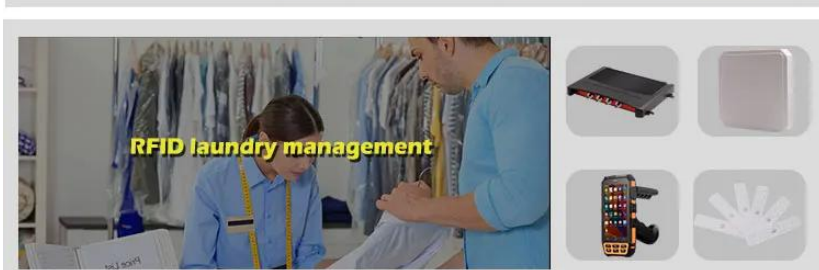
RFID books management

This application block features a central image of a library. To the right, there are four small inset images: a black square tag, a smartphone with an RFID reader, a white rectangular tag, and a white cylindrical tag.



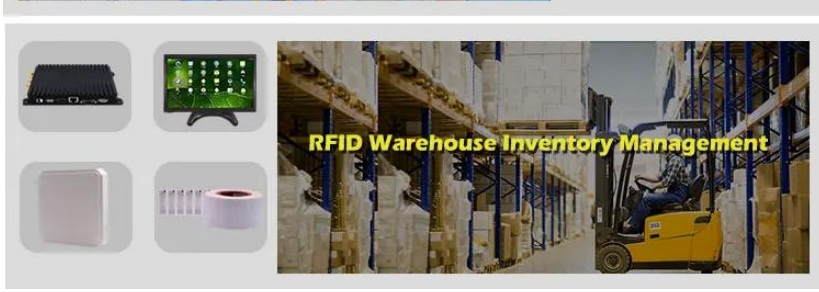
Running race timing system

This application block features a central image of runners at a race. To the left, there are four small inset images: a black rectangular tag, a white square tag, a black rectangular tag, and a white tag with the number 01256.



RFID laundry management

This application block features a central image of a laundry worker. To the right, there are four small inset images: a black rectangular tag, a white square tag, a smartphone with an RFID reader, and a white tag with a handprint.



RFID Warehouse Inventory Management

This application block features a central image of a warehouse with a forklift. To the left, there are four small inset images: a black rectangular tag, a monitor displaying a grid of data, a white square tag, and a roll of white tape.

Packing & Delivery



Shipping Way

We are one of the leading exporter of RFID products in China since 2000 years . With rich international trade experience we know the international shipping very well , We know which express or air/sea line is cheap and safe to your country . We can supply various certificate for you to clean your custom to such as CO , FTA , Form F , Form E ...Ect . We wil provide our professional suggestion for your shipping . EXW , FOB , FCT , CIF , CFR ...trade term are ok for us . We can be your reliable partner for products and shipping .

Our Service

- 1, Any inquires will be replied within 24 hours
- 2, Professional manufacturer and supplier, Welcome to visit our website and our factory
- 3, OEM/ODM Available
- 4, High quality, fashin desing, reasonable & competitive price, fast lead time
- 5, After-sale Service :
 - 1), All products will have been strictly quality checked in house before packing
 - 2), All products will be well packed before shipping
 - 3), All our products have 2-3 year warranty if the damage is not caused by human
- 6, Faster delivery : Around 1~ 5 days for sample order, 7~30 days for bulk order

7, Payment : You can pay for the order via : T/T, Western Union, Paypal

FAQ

Q: 1. How can I place an order?

A: Please list your requirement to us via Email. Then we will send the offer to you at earliest time, after order confirmation, we will arrange production ASAP.

Q: 2. What about the payment and shipment?

A: T/T, Paypal, Western Union.

Clients can choose by sea, air or express (DHL, FedEx, TNT UPS etc.)

Q: 3. How can I get a sample to check your quality?

A: We could provide free sample to you, and the freight cost paid by you.

Q: 4. How long can I expect to get the samples?

A: It depends on the quantity. Normally 3-7 days for 5000 pcs and 7-15 days for 100,000 pcs

Q: 5. Can your products be customized?

A: Almost all of your products are customized, including the material, size, thickness and printing. OEM orders are highly welcome.

Q: 6. Are you a trading company or factory?

We are one of the biggest manufacturers of RFID cards/NFC tags/RFID keyfobs/RFID wristbands/RFID reader and access control products in China more than 20 years