



## TTlock

□□□/□□□□/□□□□□

[illegible]

□ □

[illegible]





Function	Electronic door lock	Smart extension for the Smart Lock, enables remote access	Smart extension for the Smart Lock	Smart extension for the Smart Lock	Smart extension for the Smart Lock
Technology	Bluetooth	WiFi/Bluetooth	Bluetooth	Bluetooth	Bluetooth
Secure opening and locking	Secure opening & locking via smartphone		Secure opening & locking via 6-digit access code	Safe opening & locking at the touch of a button	Safe locking – even from a distance
Controllable via app	✓	✓	✓	✓	✓
Remote access	TTLOCK Bridge is required				
Access authorisations for family & friends	Yes				

SMART LOCK

The electronic door lock for everyone

Technical Details



Item number	D9
Material	ABS+Zinc
Product dimensions	113 x 62 x 67 mm
Included Components	1×Smart Lock, 1× mounting plate – screw, 1× mounting plate – glue, 1× Allen key, 1× manual
Item Package Quantity	1
Item Weight	600 grams
Color	Black
Temperature range	-10 to +40°C

Product Features

Access? Smart!

The Smart Lock makes your home smarter and more convenient. Share digital keys with family and friends with the user-friendly app. This offers you many ways of opening your door.

Installation? Easy!

The Smart Lock can be installed in under 3 minutes without screws, is invisible from outside the home, and can be easily removed.

Control? Secure!

Always keep track of your home. Thanks to the TTLOCK App you always know or keep track who locked your door and when, and whether your door is securely locked.



Accessories



Remote access at any time with TTLOCK bridge

Connect your Smart Lock to the TTLOCK bridge and access your door remotely.



Jixin Keypad

The Jixin Keypad is the perfect add-on to your Smart Lock. Simply enter your access code to give you and your guests easy access to your home.



Remote control via Bluetooth with Fobs

The Fob locks or unlocks your door via bluetooth at the touch of a button. A remote control for those who love simplicity. Fob is an alternative for everyone. Do you have children that are too young for a smartphone, or a grandmother who can't handle her old keys anymore? The Fob is the ideal door opener for almost any kind of situation. On top of that, deactivating and replacing lost Fobs is mere child's play compared to replacing an entire lock with all its keys.



Jixin Door Sensor

With our door sensor and the TTLOCK bridge, you can always keep track of your smart door lock via TTLOCK app. This way, you always have the confidence of knowing your door is closed and safely locked – even from a distance.

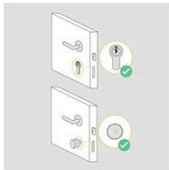


Carefree Living

Our smart door lock turns your existing door lock into a digital access solution. Enter the world of the smart home. You always have the peace of mind of knowing your door is under your control – anytime, anywhere. Full control and security for your home.

All functions in one app

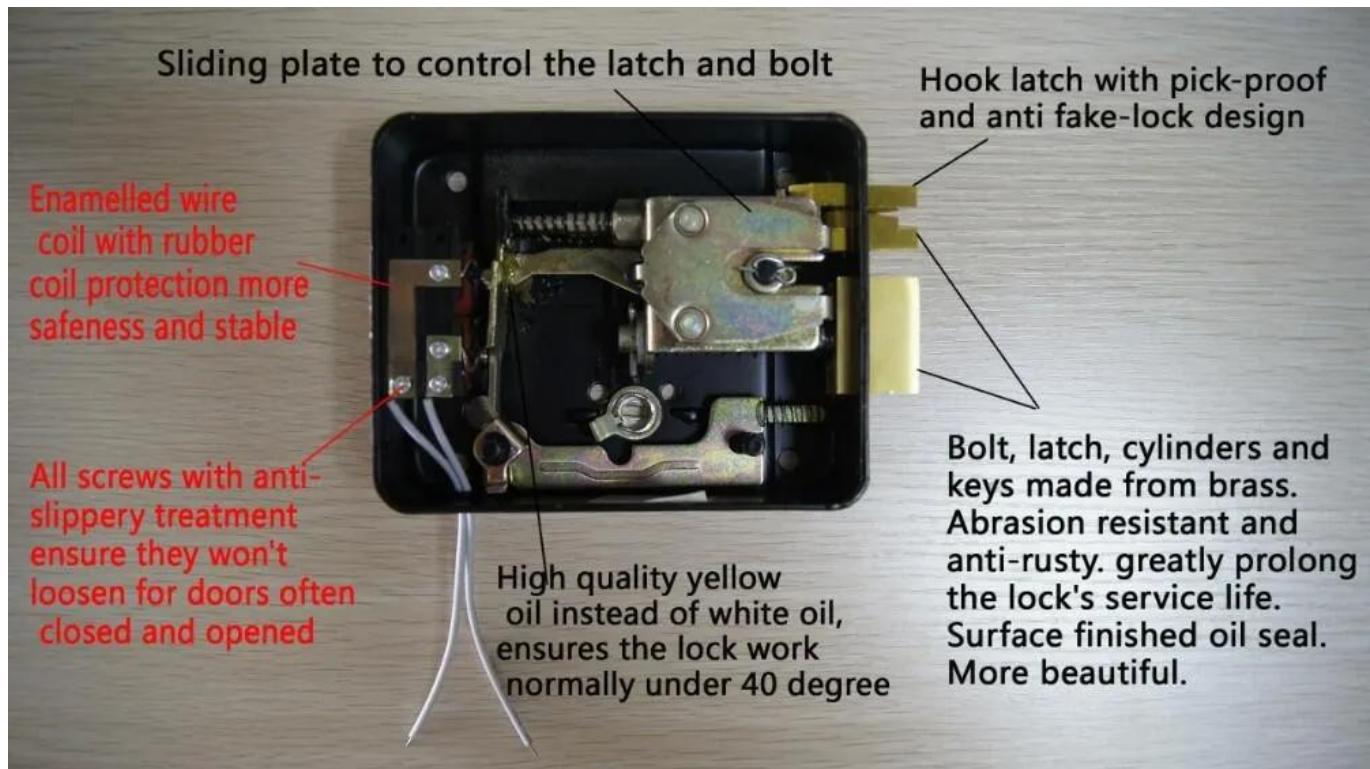
Use your smartphone instead of the classic key. Control your door with the TTLOCK app. Share digital keys with friends and family for temporary or permanent, and keep track of who has come and gone with the activity log. You can always know or keep track who locked your door and when, and whether your door is securely locked.



Easy installation

The wireless door lock can be installed in under 3 minutes without screws, is invisible from outside the home, and can be easily removed.

1. 产品概述  
 2. 产品特点

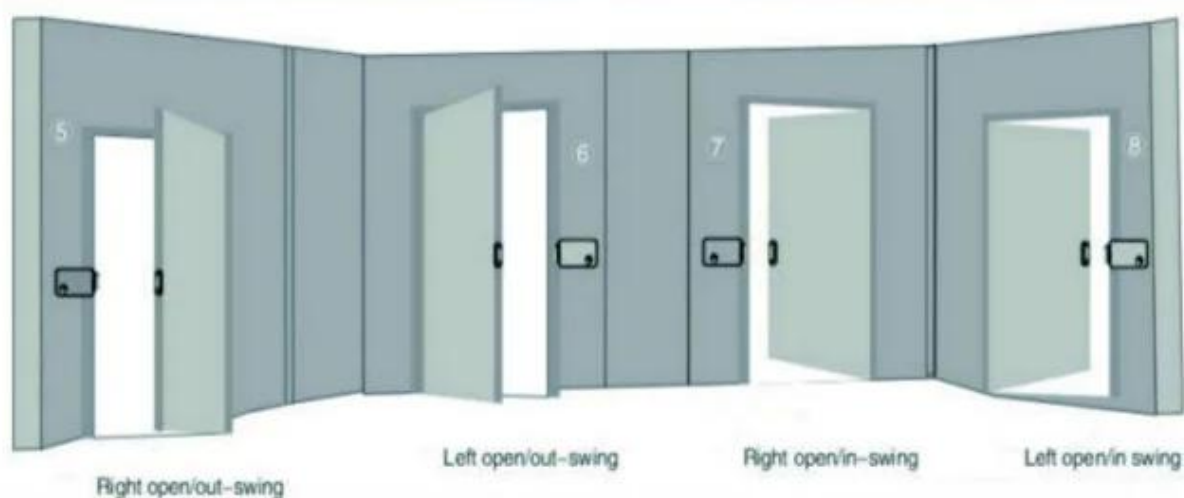
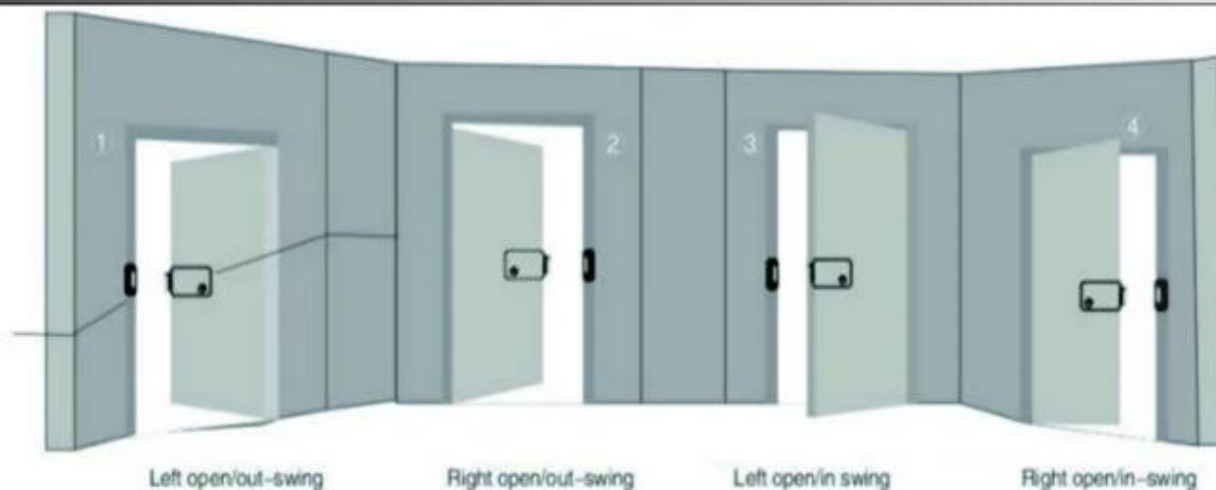


## 产品特点

- 产品采用优质材料，符合ACM Goldbridge 2 级标准
- 产品采用ACM Goldbridge 专利技术，安全可靠
- 产品采用优质材料，符合ACM Goldbridge 2 级标准

## 产品

Electric control locks all kinds installation schematic diagram



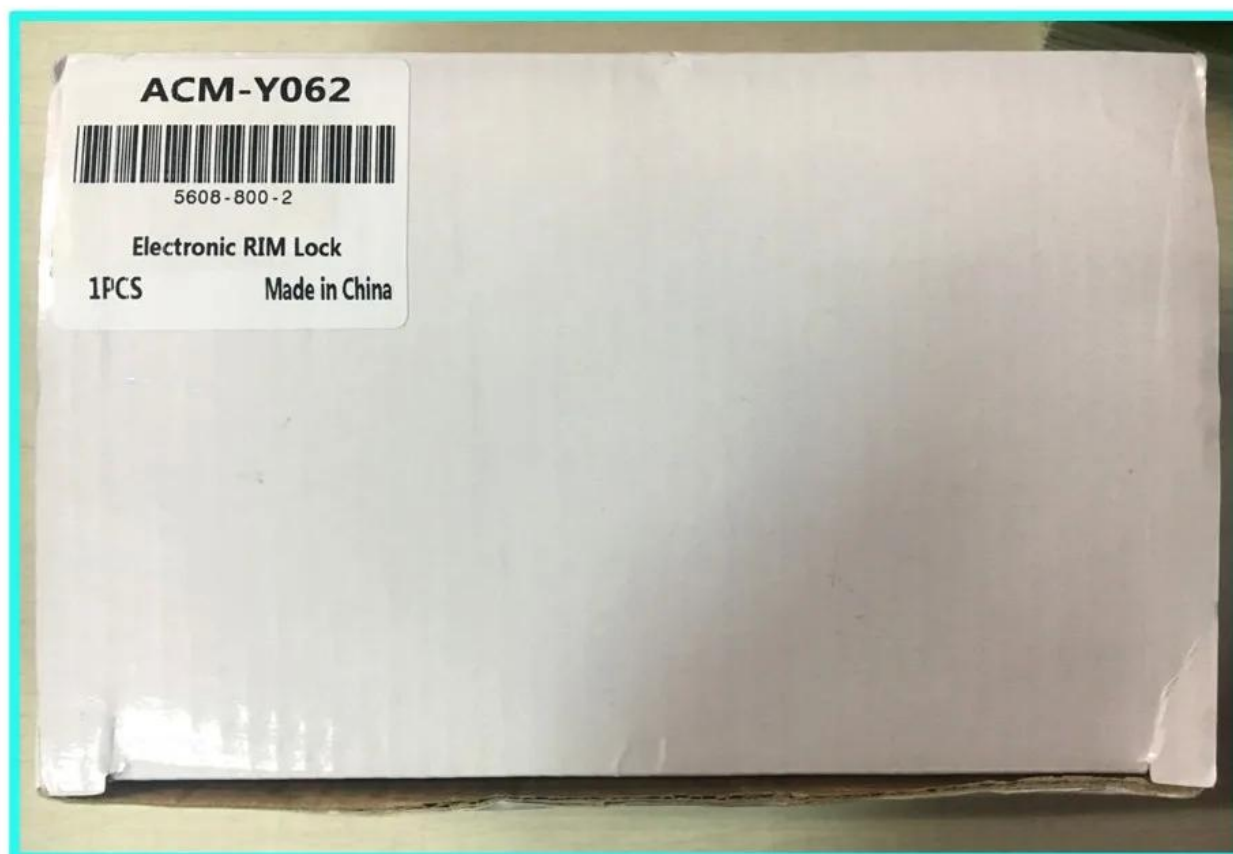
1111

DHL FEDEX TNT UPS EMS SEA AIR

11

□□□□□□□: 1 □□□□ 1 □□□□□□□□□□□□ 10 □□

□□□□□□: 26\*26\*10cm □□□□: 46kg □□□□□□□□ 50 □□□□



You may need





## ACM-Y100S 2PIN

100MA / 900MA 2PIN  
 100MA / 900MA 2PIN

## ACM-Y100S 5PIN

100MA / 900MA 5PIN  
 100MA / 900MA 5PIN

## ACM-Y500A

100MA / 900MA W/ 205x30x38mm  
 100MA / 900MA W/ 205x30x38mm



## ACM-Y280

280kg/600mm

## ACM-Y131

(NC/NO) 131mm  
PVC 131mm

## ACM-Y066

130x98x41mm

130x98x41mm

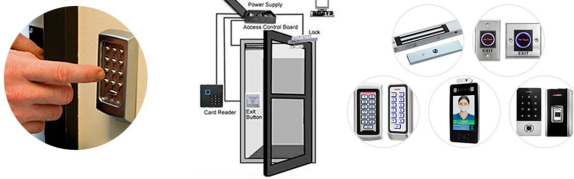
130x98x41mm



			 <p>support Wiegand 26 input and output</p>
<p>AI人脸识别门禁</p>	<p>人脸识别门禁</p>	<p>Tuya 无线 门禁 人脸识别</p>	<p>WG 26 无线门禁</p>
		<p>Support 1000 user cards unlock with RFID key card,or password,or RFID card+password Used with Rainproof Cover, can be installed outside.</p>  <p>RFID Cards Password Unlock RFID Cards+Password Unlock</p>	
<p>人脸识别门禁</p>	<p>人脸识别门禁</p>	<p>人脸识别门禁</p>	<p>人脸识别门禁</p>
			
<p>人脸识别门禁</p>	<p>WiFi 人脸识别</p>	<p>人脸识别门禁</p>	<p>Tuya Wifi 人脸识别</p>



## Complete Door Access Control Solution Provider



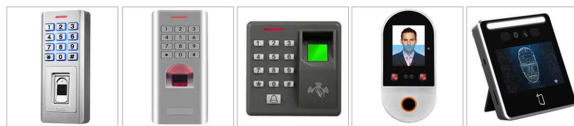
## Hot Selling Equipments

BEST SELLERS

### Standalone Fingerprint & RFID Outdoor Waterproof Access Controller



ACM-209E ACM-209V ACM-209H ACM-210E ACM-9800

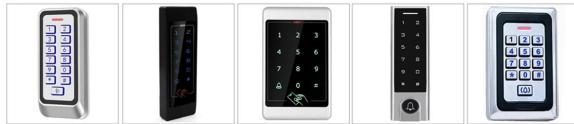


ACM-209D ACM-209F ACM-851 ACM-TM07 ACM-TM05  
Face Recognition Face Recognition

### Standalone Waterproof Metal RFID Access Control



ACM-211A ACM-212A ACM-208A ACM-210A ACM-208B



ACM-208C ACM-A65 ACM-A55 ACM-210F ACM-209A

### Standalone Waterproof Touch Screen /Keypad RFID Access Controller



ACM-230K ACM-230T ACM-223 ACM-225 ACM-227



ACM-226 ACM-301C ACM-301D ACM-212 ACM-212C

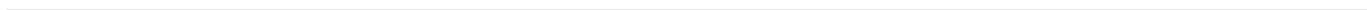
### Touch Screen Standalone Waterproof Metal RFID Access Controller



ACM-A40 ACM-A50 ACM-A10 ACM-A20 ACM-A30



ACM-A60 ACM-A80 ACM-A88 ACM-A21 ACM-A51





# 20<sup>+</sup> YEARS EXPERIENCE OEM & ODM

## ACCESS CONTROL SYSTEMS ONE STOP SOLUTION PROVIDER

Goldbridge is Top 10 China Manufacture On Alibaba, Specializes In Provide Kinds Of RFID/NFC Cards, FID Tags, RFID Card Reader, UHF Reader, Access Control System, Electromagnetic Locks, etc Since 1999



Customized Services



Quality Assurance



Fast Delivery



Best After-Sales Service

## OUR FACTORY



### Access Control and RFID Reader Production Line:

- Monthly production quantity is up to 50,000pcs, We are Provides OEM&ODM services including product research and development, LOGO printing, customized.etc



### Electromagnetic lock & Smart Door Lock Production Line :

- Monthly production quantity is up to 100,000pcs,
- Our factory is built with modern manufacture environment, facilities, equipment and professional operation technicians.
- Goldbridge Provides OEM&ODM services including product research and development, LOGO printing and product box customized.



### RFID & NFC Cards & Tags Production Line :

- RFID Tag, Wristband, Keyfob: 11,000,000pcs (monthly output)
- Four Production Lines For Smart Card, PVC Card, Prelam Sheet: 20,000,000pcs (monthly output)
- Goldbridge Provides OEM&ODM services for LOGO printing, development, customized.

## ADVANTAGE



### WHY CHOOSE US?

- FAST DELIVERY** Faster delivery by air by express. (DHL, UPS or Fedex)
- LONG HISTORY** 20 years experience in RFID & Access Control industry
- OEM ACCEPTABLE** 20 years OEM&ODM experience for 1000 + VIP client from US and Europe
- HIGH QUALITY** Design and manufacture high quality products with 30 R&D; engineers.

## APPLICATION

Bus, supermarket, school, government, hospital, factory



## CERTIFICATE





## PRODUCT CATEGORY

### RFID / NFC SMART CARD

Be customized according to you need

Fit for systems of transport, E-payment, Access Control, Event, Loyalty, ect.

[View More](#)



### ACCESS CONTROL SYSTEM

Security for All: Network Access Control Board ,Standalone Access Controller, Biometric Access Control, T&A time attendance, Facial Access Control

[View More](#)

### RFID & LONG RANGE UHF READER

20+ Years of professional Experience in production of rfid uhf hardware

- UHF desktop reader writer,
- UHF integrated reader,
- UHF R2000 fixed reader,

[View More](#)



### ELECTRONMAGNETIC LOCK

Professional Electric Locks Manufacturer In China

Electromagnetic lock with OEM & ODM since 1999 60KG /110KG /180KG /280KG /350KG /500KG

[View More](#)

## FAQ

#### Q1 How can I place an order?

A1 Click start to order or list your requirement to us by email. Then we will send the offer to you ASAP, after the order confirmed, we will arrange production ASAP.

#### Q2 What about the payment and shipment?

A3 T/T , Paypal, Western Union etc.  
You can choose your agent or via our agent by sea, air or express (DHL,FedEx, TNT UPS etc.)

#### Q4 How can I get a sample to check your quality?

A4 We could provide the sample to you, pls check the sample cost and freight cost with us.

#### Q5 How long can I expect to get the goods?

A5 It depends on the quantity and shipping way. You can check with us before ordered.

#### Q6 Can your products be customized?

A6 Almost all of our products are customized , including the material, size, thickness and printing. OEM orders are highly welcome.



[Contact Us](#)



[BACK TO HOMEPAGE >](#)

