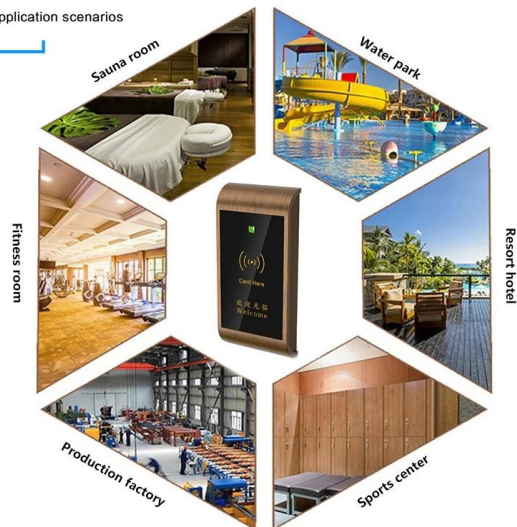




Environmentally Material
Sensitive Response

Application scenarios

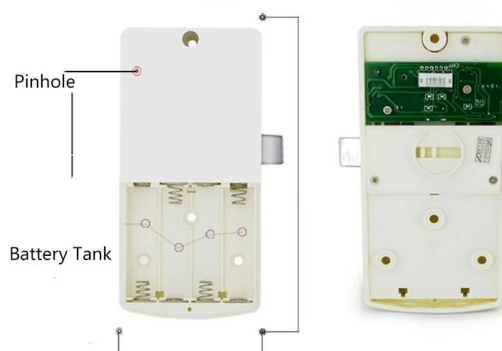


A Set Included Accessories



Lock Body

Anti Prying+Self Spring+Automatic Alarm



Suitable for a variety of style venues

Fitness Room



Sauna Cabinet



Free Manger Card/Wristband



01

Manger Wristband

02

Laser With Locker No.



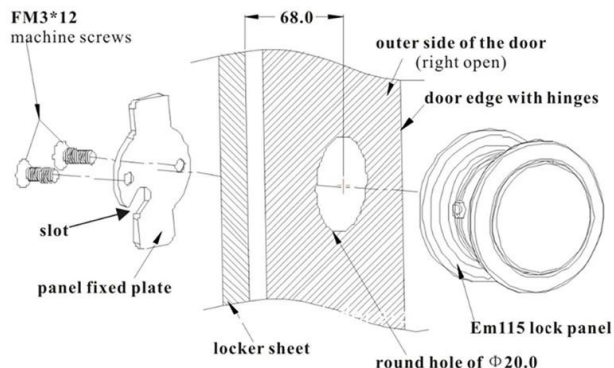
03

Slicone Wristband

— Installation Guide —

1. Installing the lock panel

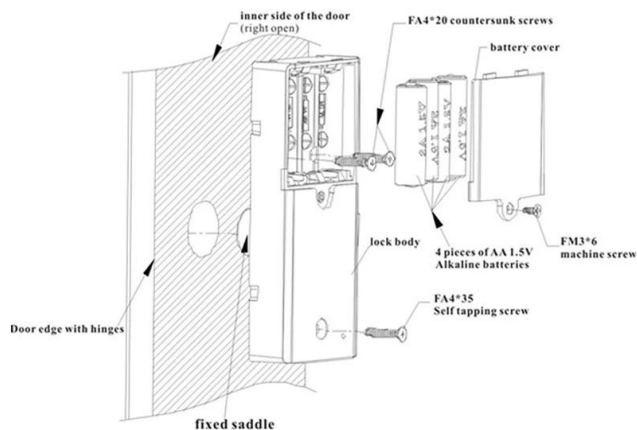
Put the PCB line through the door hole, straighten the panel and fix it by a panel fixed plate and 2 pieces of 3*12 machine screws. (Note: please put the PCB line through the slot of the fixed plate) (Shown as picture 2)



Picture 2

2. Installing the lock body

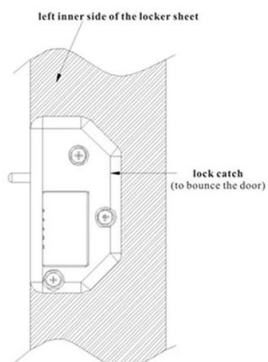
Firstly, connect the PCB line on panel with that on lock body; Secondly, straighten the lock body to let the latch bolt in the opening side of the door. Thirdly, take the battery cover down and fix the lock body by 2 pieces of 4*20 and 1 piece of 4*35 countersunk head self tapping screws (Note that the screws should be countersunk totally). Then, put in 4 pieces of AA 1.5V alkaline batteries. Lastly, fix the battery cover by a 3*6 countersunk machine screw. (Shown as Picture 3)



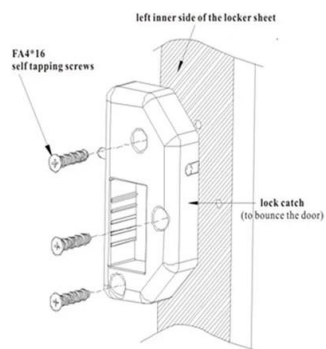
Picture 3

3. Installing the lock catch

Fixing the lock catch in the locker of a suitable height by 3 pieces of 4*16 countersunk self tapping screw. (Note: make sure the lock bolt can be dunked into the catch) (Shown as picture 3-1 and 3-2)



Picture 3-1



Picture 3-2

問 題 集

- 1) 24時間営業を希望する
- 2) 24時間営業を実現するためのコストを教えてください
- 3) OEM/ODM希望
- 4) 24時間営業を実現するためのコストを教えてください
- 5) 24時間営業を実現するためのコストを教えてください
- 6) 24時間営業を実現するためのコストを教えてください
- 7) 24時間営業を実現するためのコストを教えてください
- 8) DHL、FEDEX、TNT、UPS、EMS、SEA、AIRのいずれかを選択してください

問 題 集

Q: 1. 24時間営業を希望する

A: 24時間営業を実現するためのコストを教えてください

Q: 2. 24時間営業を実現するためのコストを教えてください

A: 24時間営業を実現するためのコストを教えてください
24時間営業を実現するためのコストを教えてください

Q: 3. 24時間営業を実現するためのコストを教えてください

A: 24時間営業を実現するためのコストを教えてください

Q: 4. 24時間営業を実現するためのコストを教えてください

A: 24時間営業を実現するためのコストを教えてください

Q: 5. 24時間営業を実現するためのコストを教えてください

A: 24時間営業を実現するためのコストを教えてください

Q: 6. 24時間営業を実現するためのコストを教えてください

A: 24時間営業を実現するためのコストを教えてください

20⁺ YEARS EXPERIENCE OEM & ODM

ACCESS CONTROL SYSTEMS ONE STOP SOLUTION PROVIDER

Goldbridge is Top 10 China Manufacture On Alibaba,
Specializes In Provide Kinds Of RFID/NFC Cards, FID Tags, RFID Card Reader,
UHF Reader, Access Control System, Electromagnetic Locks, etc Since 1999



Customized
Services



Quality
Assurance



Fast
Delivery



Best After-
Sales Service

OUR FACTORY



Access Control and RFID Reader Production Line:

- Monthly production quantity is up to 50,000pcs, We are Provides OEM&ODM services including product research and development, LOGO printing, customized.etc



Door Lock Production Line

Electromagnetic lock & Smart Door Lock Production Line :

- Monthly production quantity is up to 100,000pcs ,
- Our factory is built with modern manufacture environment, facilities, equipment and professional operation technicians.
- Goldbridge Provides OEM&ODM services including product research and development, LOGO printing and product box customized.



RFID & NFC Cards & Tags Production Line :

- RFID Tag, Wristband, Keyfob: 11,000,000pcs (monthly output)
- Four Production Lines For Smart Card, PVC Card, Prelam Sheet: 20,000,000pcs (monthly output)
- Goldbridge Provides OEM&ODM services for LOGO printing, development, customized.

ADVANTAGE



WHY CHOOSE US?

- FAST DELIVERY** Faster delivery by air by express. (DHL, UPS or Fedex)
- LONG HISTORY** 20 years experience in RFID & Access Control industry
- OEM ACCEPTABLE** 20 years OEM&ODM experience for 1000 + VIP client from US and Europe
- HIGH QUALITY** Design and manufacture high quality products with 30 R&D; engineers.

APPLICATION

Bus, supermarket, school, government, hospital, factory



CERTIFICATE



Access Control CE Access Control RoHS EM Lock EMC Certificate EM Lock RoHS Certificate



RFID Card Reader CE RFID Card Reader RoHS UHF Reader CE Certificate UHF Reader RoHS



PRODUCT CATEGORY

RFID / NFC SMART CARD

Be customized according to you need

Fit for systems of transport, E-payment, Access Control, Event, Loyalty, ect.



[View More](#)

ACCESS CONTROL SYSTEM

Security for All: Network Access Control Board ,Standalone Access Controller, Biometric Access Control, T&A time attendance, Facial Access Control



[View More](#)

RFID & LONG RANGE UHF READER

20+ Years of professional Experience in production of rfid uhf hardware

- UHF desktop reader writer,
- UHF integrated reader,
- UHF R2000 fixed reader,



[View More](#)

ELECTRONMAGNETIC LOCK

Professional Electric Locks Manufacturer In China

Electromagnetic lock with OEM & ODM since 1999 60KG /110KG /180KG /280KG /350KG /500KG



[View More](#)

FAQ

Q1 How can I place an order?

A1 Click start to order or list your requirement to us by email. Then we will send the offer to you ASAP, after the order confirmed, we will arrange production ASAP.

Q2 What about the payment and shipment?

A3 T/T , Paypal, Western Union etc.
You can choose your agent or via our agent by sea, air or express (DHL,FedEx, TNT UPS etc.)

Q4 How can I get a sample to check your quality?

A4 We could provide the sample to you, pls check the sample cost and freight cost with us.

Q5 How long can I expect to get the goods?

A5 It depends on the quantity and shipping way. You can check with us before ordered.

Q6 Can your products be customized?

A6 Almost all of our products are customized , including the material, size, thickness and printing. OEM orders are highly welcome.



[Contact Us](#)



[BACK TO HOMEPAGE >](#)

