



FID keyfob

Advantages:

1. Resistant to dust, dirt and humidit
2. Possibility to combine two technologies in one key fob
3. Suitable for indoor and outdoor use
4. An attractive palette of colors is available as is a competent encoding service.
5. Personalization: The rfid key fob can be personalized by full colour printing or long-lasting laser engraving, using your logo, a number or any graphic motive.

C
o
m
p
l
e
t
e
l
y
R
e
u
s
a
b
l
e
C
h
e
a
p
W
a
t
e
r
p
r
o
b
e
m
s
s
i
v
e
R
f
i
d
E
p
o
x
y
K
e
y
f
o
b
w
i
t
h
K
e
y
r
i
n
g
M
a
t
r
i
a
l
F
i
l
e
s
u
e
H
C
V
C
H
C
P

S
i
l
k
s
c
r
e
e
n
(
n
o
m
o
r
e
t
h
a
n
2
c
o
l
o
r
s
)
I
n
k
J
e
t

n
u
m
h
e
r
n
g
g
(
v
a
r
i
o
u
s
d
i
f
f
e
r
e
n
t
n
u
m
b
e
r
i
n
g
f
o
r
m
a
t
s
)

I
D
I
d
e
n
t
i
f
i
c
a
t
i
o
n
,
L
o
g
i
s
t
i
c
s
,
V
I
P
,
E
-
p
a
y
m
e
n
t
,
A
c
c
e
s
s
C
o
n
t
r
A
p
p
E
c
a
t
i
b
n
,
L
o
y
a
l
t
y
S
y
s
t
e
m
,
p
a
r
k
i
n
g
M
a
n
a
g
e
m
e
n
t
,
T
i
m
e
A
t
t
e
n
d
a
n
c
e
,
e
t
c
.

O
p
e
r
a
t
i
n
g
T
e
m
p
e
r
a
t
u
r
e
:
-
1
°
C
t
o
6
°
W
e
i
g
h
t
:
1
g
m
m
b
u
r
e
:
-
2
°
C
t
o
8
5
°
C
H
u
m
i
d
i
t
y
:
4
%
t
o
8
%
R
H

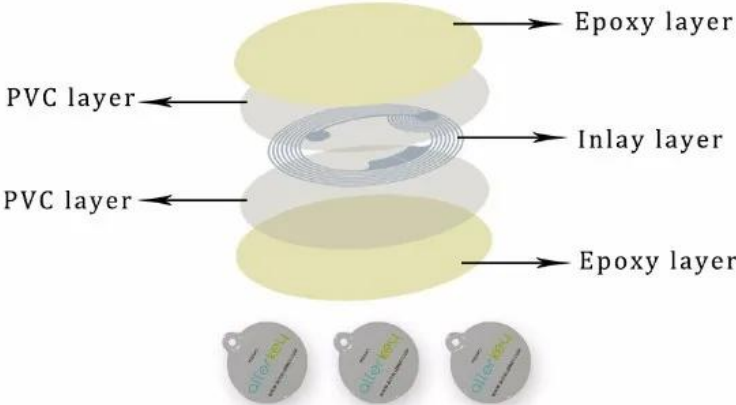
Product Show

Special Customized Service By Your Choice:

1. There different chips available;
2. Printing: Plain color, Silkscreen, LOGO printing, off-set printing, etc;
3. Material: ABS, PVC, Leather, etc.

RFID Epoxy Tag

Structure



.....

More Options.

Epoxy Card/keyfob is a fashionable element of smart card. The epoxy is covered on the printing card, so that the epoxy card is waterproof, chemical resistance, crystal and so on. Using the crystal drops of epoxy in addition to the surface of products to get a good protection effect, still can increase the surface gloss and brightness, to further increase the decorative effect. So epoxy card is widely used as NFC mobil tag, or high-end products.





Product Application

RFID Keyfob Application

The keyfob is well suited for intelligent lock systems, access control, recording of working times, contactless payment or public transport ticketing systems. And the keyfob has a ring out of metal, so it can be attached at a key ring.

RFID Keyfobs

For access control and other applications

125Khz/13.56Mhz/860~960Mhz chips available

OEM & ODM available



Packing&Shipping

Packing:

200pcs per bag and 10 bags per carton. The standard packing carton size is : 26X22X23 cm , Weight : 13 kg

Or per customer's requirements.

200pcs/bag



2000pcs/Carton



200pcs per bag.

There are 200 pcs keyfob in a bag.
Or per customer's requirements.

2000pcs per carton.

10 bags in a carton, total 2000pcs.
The standard packing carton size is : 49X25X18 cm ,
Weight : 13 kg