

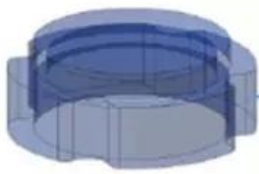


RFID UHF

RFID
RFID
RFID
RFID



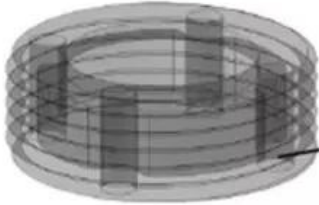
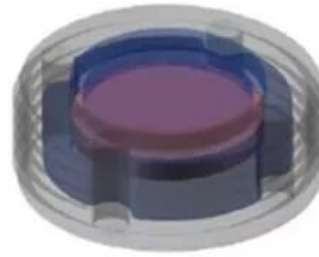




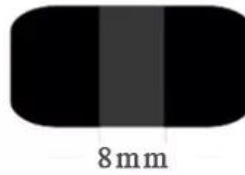
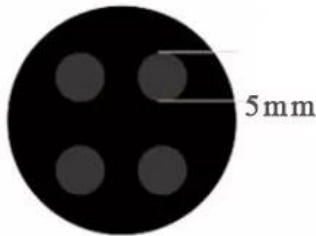
shell



Antenna and chip



overmolding





waterproof

Moisture-proof

shockproof



- RFID
- IC H3
- 902~928MHz~865~868MHz
- ISO/IEC 18000-6 C (EPC Gen2)
- EPC: 96 bits: 512 bits
- ABS
- IP68
- 30mm×15mm
- RFID/ABS/RFID
- RFID



SHENZHEN GOLDBRIDGE INDUSTRIAL CO.,LTD

Factory Wholesale with 20% Discount OFF - RFID Cards, RFID Reader, Access Control , Locks, Exit Button



125Khz EM4100 Proximity Card (ACM-EMI-S)	Mifare 1K ISO Blank Card (ACM-MF1)	125Khz Clamshell Thick Card (ACM-EMC-I)	125Khz EM4100 rfid Key fob (ACM-ABS003)	125Khz EM Sillicon Wristband (ACM-W003/005)
USB Desktop Reader (ACM-08M)	Access control rfid reader (ACM-302)	Access control rfid reader (ACM-28A)	Keypad access control reader (ACM-305)	Access control rfid reader (ACM-26)
Metal Touch Screen Keypad IP65 Access Controller (ACM-A10)	Touch Keypad Access Controller (ACM225)	Metal Keypad Access controller (ACM208A)	Keypad standalone RFID Access Controller (ACM223)	Metal Keypad Access Controller (ACM209A)
2-6Meter UHF Long range rfid reader (ACM813A)	6-12Meter UHF Reader (ACM802A)	10-20Meter UHF Reader (ACM819A)	8-12Meter UHF Reader (ACM803A)	UHF USB Desktop Encode Reader /Writer with SDK (ACM-217UHF)
60kg/120lbs EM Lock (ACM-Y60)	180kg/300lbs LED EM Lock (ACM-Y180)	280kg/600lbs Timer /LED EM Lock (ACM-Y280-5PIN)	Long type Fail safe Electric Strike(ACM-Y132)	Drop bolt Deadbolt Lock, Power to unlock (ACM-Y100)
Yale Waterproof Electric RIM Lock (ACM-Y045)	No touch Door Release Exit Button (ACM-K2A/K6A)	Dual function : Power Supply+exit button (Y802A)	QR CODE Scanner rfid Reader	Passport ID Scanner (ACM901)

SHENZHEN GOLDBRIDGE INDUSTRIAL CO.,LTD

Whatsapp: +86-14554918707 , E-mail: lilyjiang_06@163.com, sales@goldbridgesz.com ; www.goldbridgesz.com

For More Products Price List and informations , Please contact our sales at sales@goldbridgesz.com, thank you !

PRODUCT CATEGORY

RFID / NFC SMART CARD

Be customized according to you need

Fit for systems of transport, E-payment, Access Control, Event, Loyalty, ect.



[View More](#)

ACCESS CONTROL SYSTEM

Security for All: Network Access Control Board ,Standalone Access Controller, Biometric Access Control, T&A time attendance, Facial Access Control



[View More](#)

RFID & LONG RANGE UHF READER

20+ Years of professional Experience in production of rfid uhf hardware

- UHF desktop reader writer,
- UHF integrated reader,
- UHF R2000 fixed reader,



[View More](#)

ELECTRONMAGNETIC LOCK

Professional Electric Locks Manufacturer In China

Electromagnetic lock with OEM & ODM since 1999 60KG /110KG /180KG /280KG /350KG /500KG



[View More](#)

FAQ

Q1 How can I place an order?

A1 Click start to order or list your requirement to us by email. Then we will send the offer to you ASAP, after the order confirmed, we will arrange production ASAP.

Q2 What about the payment and shipment?

A3 T/T , Paypal, Western Union etc.
You can choose your agent or via our agent by sea, air or express (DHL,FedEx, TNT UPS etc.)

Q4 How can I get a sample to check your quality?

A4 We could provide the sample to you, pls check the sample cost and freight cost with us.

Q5 How long can I expect to get the goods?

A5 It depends on the quantity and shipping way. You can check with us before ordered.

Q6 Can your products be customized?

A6 Almost all of our products are customized , including the material, size, thickness and printing. OEM orders are highly welcome.