



□□□□ : □□ □□ □□□ □ □□ □ □□ □□ □□ □□ □ □□□□□ □□ □□ □□  
□□ □□ □□ □□



### Lock body size

Note: The dimensions are measured manually, with slight errors.  
Please refer to the actual product. Unit: MM



### Accessory size

Note: The dimensions are measured manually, with slight errors.  
Please refer to the actual product. Unit: MM



## Difference between single head/double head locks

Single head lock uses a key to unlock the door, and the exit button opens the door, Double lock doors use keys for entry and exit, and buttons can also be used to open the door when leaving



Stainless steel button switch



Pure copper lock core design

## Stainless steel material

Durable, moisture-resistant,  
and less prone to rusting



Stainless steel





## Product Details

QUALITY DETAILS



### Two materials available

Stainless steel/painted version



Stainless steel version

Baking paint style



### Mechanical key

Each lock is equipped with three keys

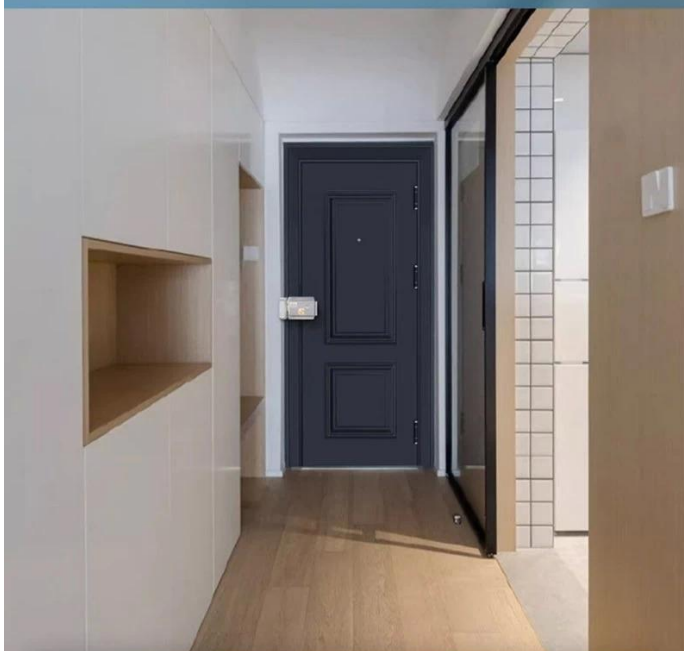
### Powerful motor

Short unlocking time without jamming



## Applicable scope

Suitable for wooden doors, iron doors, metal doors, etc., widely used.



Iron Gate



Wooden door

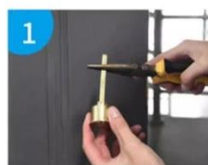


Metal doors



## Installation instructions

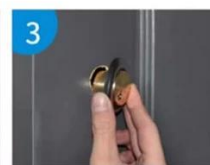
INSTALLATION METHOD



1 Cut the lock cylinder to a suitable length according to the thickness of the door (suitable for door thickness of 30mm-55mm)



2 Drill circular holes (26.5mm-49mm) according to the size of the lock head outdoors



3 First place the front lock head into the decorative ring, and then insert both into the circular hole together



4 Install a three eye board and bamboo screw at the corresponding position indoors



5 Install the rear cover plate at the corresponding hole position and fix the four corners with screws



6 Install the front cover plate and secure it with screws. Also, secure the small shell with screws and complete the installation



## Left/Right Opening Instructions

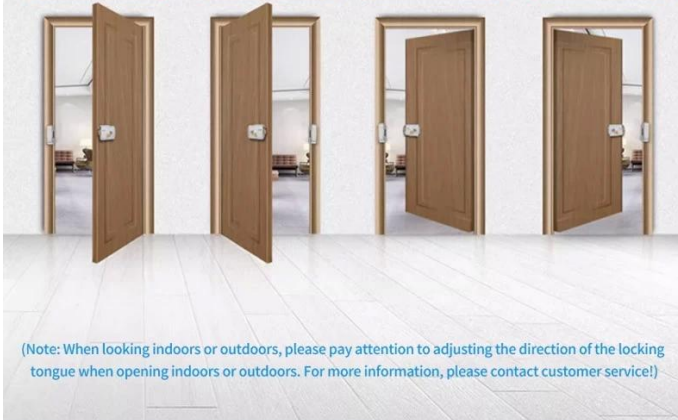
Entry key unlock exit button unlock

Inner right opening

Inner left opening

Outer right opening

Outer left opening



## Indoor button unlocking

One click to open, convenient and fast



## Connect to access control for use

Connected to 220V



### Stainless steel version

Single head left opening  
(Outdoor key to open the door;  
indoor button to open the door)  
Weight: 1.3kg



Double head left opening  
(Outdoor key to open the door;  
indoor button/key to open the door)  
Weight: 1.3kg



Single head right opening payment  
(Outdoor key to open the door;  
indoor button to open the door)  
Weight: 1.3kg

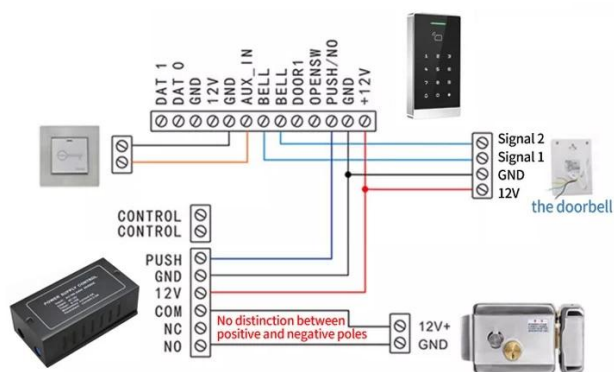


Double head right opening style  
(Outdoor key to open the door;  
indoor button/key to open the door)  
Weight: 1.3kg



## Electric control lock wiring diagram

Kind reminder: This link only sells electronic locks. Customers who need other accessories in the wiring diagram should contact customer service to purchase



Note: The power controller needs to be connected to 220V, and other accessories can be connected with a network cable

## Product Application



Personal home



Community access



Hotel PMS



Long-term rental management



Corporate Services



School office

## Our Advantages



### TRUE FACTORY

Professional manufacturer that covering an area of more than 8000 square meters



### ONE-STOP

We emphasize providing customers with a full range of door solutions.



### OEM & ODM

We can also provide OEM or ODM services and customize new products according to customer needs



### QUALITY GUARANTEE

Our products have passed the Ma certification of the Ministry of public security of China and the CE certification of the European Union







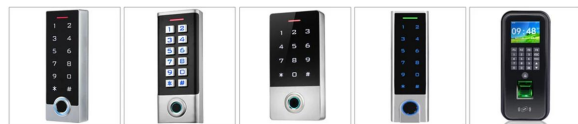
## Complete Door Access Control Solution Provider



## Hot Selling Equipments

BEST SELLERS

### Standalone Fingerprint & RFID Outdoor Waterproof Access Controller



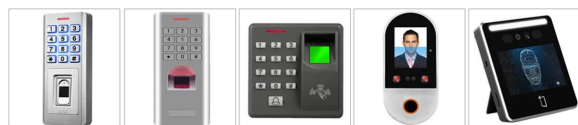
ACM-209E

ACM-209V

ACM-209H

ACM-210E

ACM-9800



ACM-209D

ACM-209F

ACM-851

ACM-TM07

ACM-TM05

Face Recognition

Face Recognition

### Standalone Waterproof Metal RFID Access Control



ACM-211A

ACM-212A

ACM-208A

ACM-210A

ACM-208B



ACM-208C

ACM-A65

ACM-A55

ACM-210F

ACM-209A

### Standalone Waterproof Touch Screen /Keypad RFID Access Controller



ACM-230K

ACM-230T

ACM-223

ACM-225

ACM-227



ACM-226

ACM-301C

ACM-301D

ACM-212

ACM-212C

### Touch Screen Standalone Waterproof Metal RFID Access Controller



ACM-A40

ACM-A50

ACM-A10

ACM-A20

ACM-A30



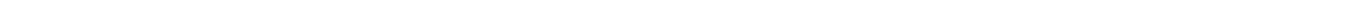
ACM-A60

ACM-A80

ACM-A88

ACM-A21

ACM-A51





# 20<sup>+</sup> YEARS EXPERIENCE OEM & ODM

## ACCESS CONTROL SYSTEMS ONE STOP SOLUTION PROVIDER

Goldbridge is Top 10 China Manufacture On Alibaba, Specializes In Provide Kinds Of RFID/NFC Cards, FID Tags, RFID Card Reader, UHF Reader, Access Control System, Electromagnetic Locks, etc Since 1999



Customized Services



Quality Assurance



Fast Delivery



Best After-Sales Service

## OUR FACTORY



### Access Control and RFID Reader Production Line:

- Monthly production quantity is up to 50,000pcs, We are Provides OEM&ODM services including product research and development, LOGO printing, customized.etc



### Door Lock Production Line

### Electromagnetic lock & Smart Door Lock Production Line :

- Monthly production quantity is up to 100,000pcs,
- Our factory is built with modern manufacture environment, facilities, equipment and professional operation technicians.
- Goldbridge Provides OEM&ODM services including product research and development, LOGO printing and product box customized.



### RFID & NFC Cards & Tags Production Line :

- RFID Tag, Wristband, Keyfob: 11,000,000pcs (monthly output)
- Four Production Lines For Smart Card, PVC Card, Prelam Sheet: 20,000,000pcs (monthly output)
- Goldbridge Provides OEM&ODM services for LOGO printing, development, customized.

## ADVANTAGE



### WHY CHOOSE US?

- 1 FAST DELIVERY** Faster delivery by air by express. (DHL, UPS or Fedex)
- 2 LONG HISTORY** 20 years experience in RFID & Access Control industry
- 3 OEM ACCEPTABLE** 20 years OEM&ODM experience for 1000 + VIP client from US and Europe
- 4 HIGH QUALITY** Design and manufacture high quality products with 30 R&D; engineers.

## APPLICATION

Bus, supermarket, school, government, hospital, factory



## CERTIFICATE



## PRODUCT CATEGORY

### RFID / NFC SMART CARD

Be customized according to you need

Fit for systems of transport, E-payment, Access Control, Event, Loyalty, ect.

[View More](#)



### ACCESS CONTROL SYSTEM

Security for All: Network Access Control Board ,Standalone Access Controller, Biometric Access Control, T&A time attendance, Facial Access Control

[View More](#)



### RFID & LONG RANGE UHF READER

20+ Years of professional Experience in production of rfid uhf hardware

- UHF desktop reader writer,
- UHF integrated reader,
- UHF R2000 fixed reader,

[View More](#)



### ELECTRONMAGNETIC LOCK

Professional Electric Locks Manufacturer In China

Electromagnetic lock with OEM & ODM since 1999 60KG /110KG /180KG /280KG /350KG /500KG

[View More](#)



## FAQ

#### Q1 How can I place an order?

A1 Click start to order or list your requirement to us by email. Then we will send the offer to you ASAP, after the order confirmed, we will arrange production ASAP.

#### Q2 What about the payment and shipment?

A3 T/T , Paypal, Western Union etc.  
You can choose your agent or via our agent by sea, air or express (DHL,FedEx, TNT UPS etc.)

#### Q4 How can I get a sample to check your quality?

A4 We could provide the sample to you, pls check the sample cost and freight cost with us.

#### Q5 How long can I expect to get the goods?

A5 It depends on the quantity and shipping way. You can check with us before ordered.

#### Q6 Can your products be customized?

A6 Almost all of our products are customized , including the material, size, thickness and printing. OEM orders are highly welcome.



[Contact Us](#)



[BACK TO HOMEPAGE >](#)