



□□ □□ : 1000
□□ □□ : 1000
□□ □□ : 100000
□□□□□ : OLED
□□□□ □□ □□ □□ □□ □□ □□
□□□□ □ □□□□□ □□□□ □□ □□
□□□□ □□□□□□□ □□□□□□□ U □□□□
V-Self-service □□ □□ □□□□
TXT □□ □□ □□ □□
□□□□□□ □□ : U □□□□
□□ : □

□□	□□□□ □□
□□□□ □□ □□	1000
□□ □□	100000
□□ □□□	Mifare-13.56MHz
□□□□□	OLED □□□□ □□
□□ □	□□ □
□□□□ □□ □□	1000 □ □□
Wiegand □□□□	□□ WG26 / WG34
□□ □□□□ □□	□□□□ □ □□ □□
□□ □□ □□	□□□□
□□	117 x 78 x 22mm

Touch Screen Standalone Access Controller

city on lakes wind to be handed lakes ritual the ritual to offer the lakes scenery a collection city on lakes wind to be handed
e ritual to offer the lakes scenery a collection city on lakes wind to be handed



U disk transfer
data



Voice function



IC card

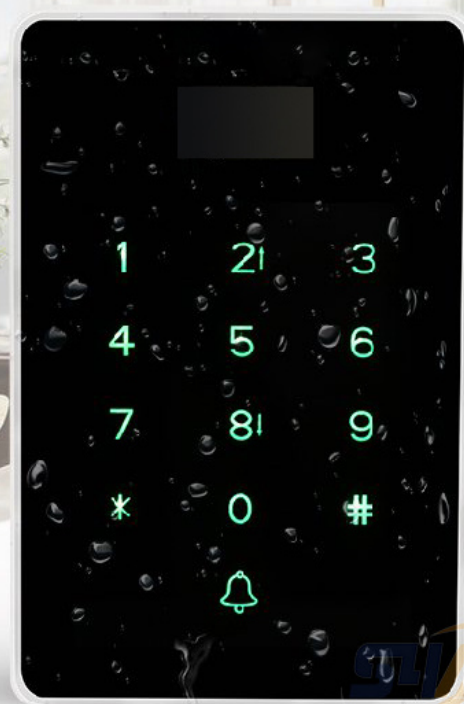


Full touch
button



1000 User

**Waterproof
IP65**





OLED LCD screen



Import ARM32-bit CPU system



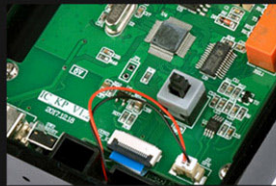
Backlit doorbell button



U disk transfer information



Aluminum body



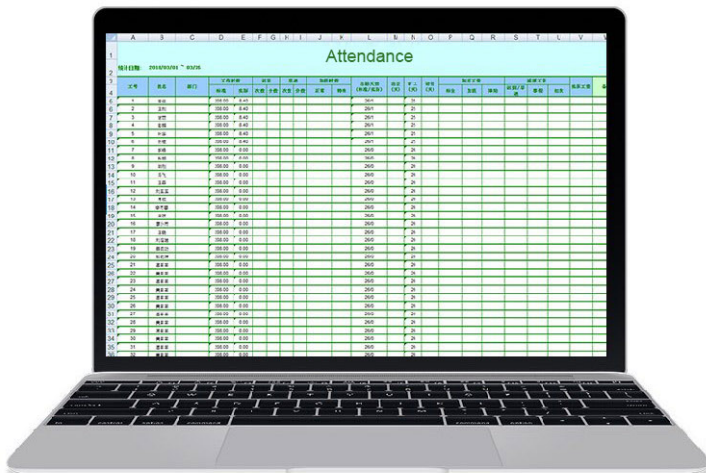
Tamper alarm function

Swipe to open the door

Password opening

Attendance data

Self-service report, free software installation





□□□ □□□

- 1, □□ □□□ 24 □□ □□□ □□□□□
- 2, □□ □□□ □ □□ □□, □ □□□ □ □□ □□□□□.
- 3, OEM / ODM □□
- 4, □□□, fashin □□□, □□□□□ □□□□□ □□, □□ □□ □□
- 5, □□ □ □□□ :
- 1), □□ □□□ □□□□ □□ □□□ □□□□□□□
- 2), □□ □□□ □□□□ □□ □ □□ □ □□□□
- 3), □□□ □□ □□□ □□□ □□ □□□□ □□ □□ 2-3 □ □□□ □□□□.
- 6, □□ □□ : □□ □□□ □ 1 ~ 5 □, □□ □□□ □ 7 ~ 30 □
- 7, □□ : □□□ □□ □□□ □□ □ □□□□ : T / T, Western Union, Paypal
- 8, □□ : □□□ DHL, FEDEX, TNT, UPS, EMS, SEA □□□ □ □□□ □□ □□ □□ □□ □□□ □□□ □□ □□□□.

□□□□ □□

Q : 1. □□□ □□□ □ □□□□?
 A : □□□□ □□ □□□ □□□□□□. □□ □□ □□□ □ □□ □□□ □□ □□□□□□. □□□ □□□□ □□□ □ □□ □□□ □□ □ □□□□.

Q : 2. 如何支付?

A : T / T, Paypal, 支票。

如何运输, 如何包装 (DHL, FedEx, TNT UPS 等) 如何包装。

Q : 3. 如何包装?

A : 如何包装, 如何包装, 如何包装。

Q : 4. 如何包装?

A : 如何包装。 5000 个, 3-7 天, 100,000 个, 7-15 天。

Q : 5. 如何包装?

A : 如何, 如何, 如何。 OEM 如何。

Q : 6. 如何包装?

如何 20 个, RFID 如何 / NFC 如何 / RFID 如何 / RFID 如何, RFID 如何。

ABOUT GOLDBRIDGE

As a one of leading manufacturer and exporter of RFID products in China, We have been in this field for 20 years already. We have rich production and exportation experience on RFID products. Our strength products are: rfid card, rfid Keyfob, rfid wristband, rfid tag and various rfid reader. We are also the access control solution provider.

MORE >>



ABOUT OUR FACTORY

Established in 1999, Shenzhen Goldbridge has witnessed the technological innovation from rfid card to rfid tag, the overall change of market products in the past 20 years, and registered "Shenzhen Goldbridge Industrial Co., Ltd." in 1999.

At present, Goldbridge has developed into a National High-Tech Enterprise, which is specialized in the integration of production, market and research. Starting from the PVC cards and RFID cards factory with only 66 workers, Goldbridge has accomplished the successful transition from traditional manufacturing industry to IOT technology enterprise (RFID technology development).



With the accumulation of dozens of software copyrights and utility new inventions and patents, Goldbridge has been rewarded as "National High-Tech Enterprise", "Shenzhen High-Tech Enterprise", and has become an integrated enterprise which focuses on research, production and market. Meanwhile, by adopting the "Military + School + Family" corporate culture concept, accompanied by the continuous innovation of business model and marketing model, plus the B2B, B2C platform and excellent sales team, Goldbridge sells its products all over the world.



