



□ □ □ □ □ □ □ □ □ □ **mountmagnetic 500kg / 1000lbs**

□ □ □ □ □ 500kg (1000lbs) □ □ □ □ □ □ □ □

□  
□  
□  
□  
□  
□  
2  
6  
5  
L  
x  
7  
□  
□  
W  
□  
□  
3  
9  
H  
(  
m  
m  
)

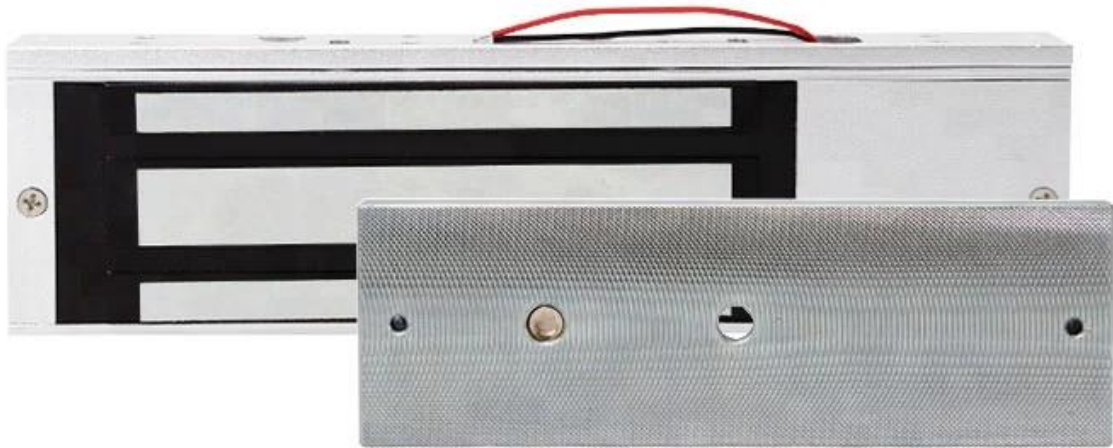












## Advantatge

- 500kg, 1000lbs.
- 12 VDC (24 VDC).
- 12VDC.
- MOV.
- NO, NC, COM.
- LED.
- (NO / NC / COM)
- (NO / NC / COM)
- .
- .
- .

- 1000mA 1000mA 1000mA .  
- 1000mA CE 1000mA, 1000mA 1000mA MA 1000mA

1000mA 1000mA, OEM / ODM 1000mA



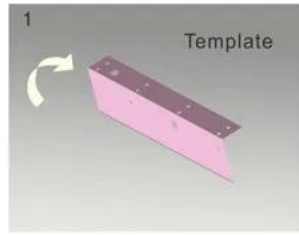
1000mA 1000mA 1000mA LED 1000mA, 1000mA 1000mA 1000mA . 1000mA 1000mA 1000mA .  
ACM-Y500 1000mA 1000mA 1000mA. PCB 1000mA 1000mA 1000mA 1000mA. 1000mA 1000mA 12v 1000mA 24v 1000mA 7 1000mA 1000mA 1000mA 1000mA . 1000mA 1000mA  
1000mA PCB 1000mA. 1000mA 1000mA 1000mA 1000mA 1000mA. 1000mA 1000mA 1000mA 1000mA 1000mA 1000mA.



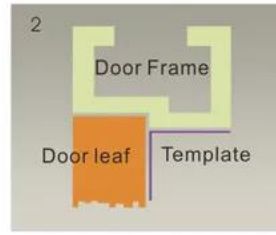


# STANDARD INSTALLATION STEPS

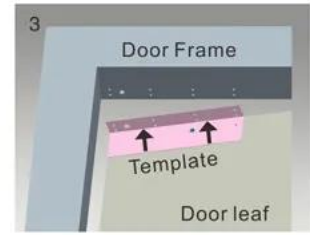
Professional guidance, Rest assured



1 Fold the plate to 90° .



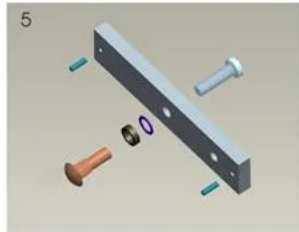
2 Close the door first, then place the upper side of template on door frame, while adjust the left side next to the door leaf.



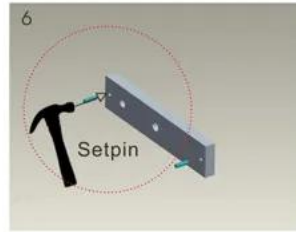
3 Mark screw positions of armature plate and magnetic lock on door leaf and door frame respectively.



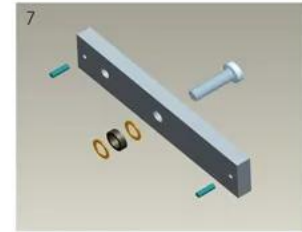
4 Drill holes based on the marked positions.



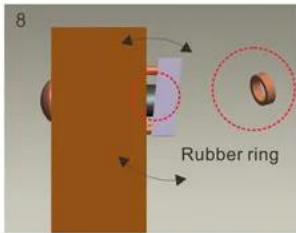
5 Make a combination based on the picture.



6 Strike the pin into the armature plate slightly (to avoid movement).



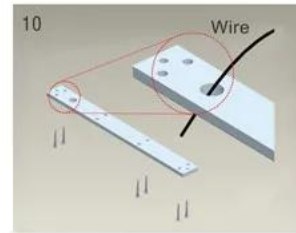
7 Make a combination based on the picture (add washer accordingly). The rubber ring must be added.



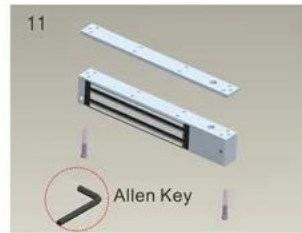
8 Place the rubber ring between armature plate and door leaf.



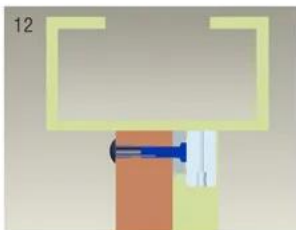
9 Use Allen key to remove the mounting plate from lock body.



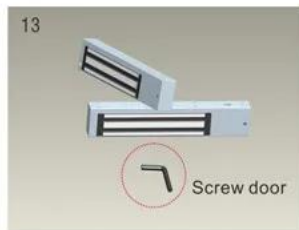
10 Fix the mounting plate on the door frame according to the holes drilled earlier.



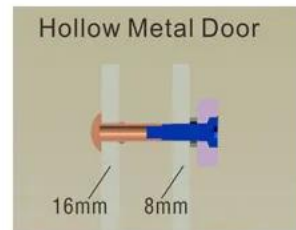
11 Use Allen key to screw the lock body on the mounting plate.



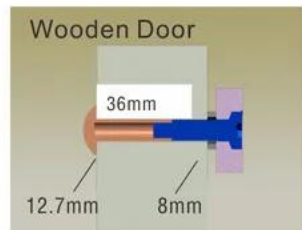
12 Close the door to test holding force. The angle between armature plate and magnetic lock can be adjusted by adding or reducing washers.



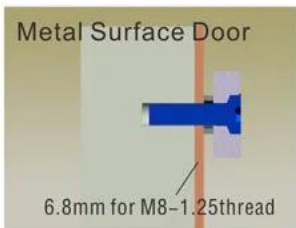
13 After all the appropriate procedures, the holding force can be maximized. Finally, fix the tamper screw.



Hollow Metal Door  
Drill a hole  
Inside: Diameter is 8mm  
Outside: Diameter is 16mm



Wooden Door  
Drill a hole  
Inside: Diameter is 8mm  
Outside: Diameter is 12.7mm



Metal Surface Door  
6.8mm for M8-1.25thread  
Inside: Drill a hole diameter is 8mm folding the plastic straight pin

## Notice:

Thickness of Door Leaf:

350LBS: 44mm

600LBS: 50mm

800LBS: 48mm

1200LBS: 46mm

□□ □ □□

□□ □□

□□□ DHL, FEDEX, TNT, UPS, EMS, SEA □ By AIR□□ □□□ □□ □□ □□□□.

□□

□□ □□□ □□ : □□ □ 1 □ □□, □□ □ 6 PC,

□□ □□ : 35 \* 30 \* 20cm, □□□ : 24kg. □□□ □ 50 □□ □□



## FAQ

- 1, 24 小時服務熱線
- 2, 歡迎來電諮詢, 我們竭誠為您服務。
- 3, OEM / ODM
- 4, 歡迎, fashin 品牌, 歡迎來電諮詢, 我們竭誠為您服務。
- 5, 歡迎來電諮詢 :
- 1), 歡迎來電諮詢 我們竭誠為您服務。
- 2), 歡迎來電諮詢 我們竭誠為您服務。
- 3), 歡迎來電諮詢 我們竭誠為您服務 2-3 天內為您服務。
- 6, 歡迎來電 : 歡迎來電 1 ~ 5 天, 歡迎來電 7 ~ 30 天
- 7, 歡迎來電 : 歡迎來電 T / T, Western Union, Paypal 歡迎來電 我們竭誠為您服務。
- 8, 歡迎來電 : 歡迎來電 DHL, FEDEX, TNT, UPS, EMS, SEA 歡迎來電 AIR 歡迎來電 我們竭誠為您服務 歡迎來電 我們竭誠為您服務。

## FAQ

### Q : 1. 歡迎來電諮詢 ?

A : 歡迎來電諮詢 我們竭誠為您服務。 歡迎來電諮詢 我們竭誠為您服務。 歡迎來電諮詢 我們竭誠為您服務。

### Q : 2. 歡迎來電諮詢 ?

A : 歡迎來電諮詢 T / T, 歡迎來電諮詢, 歡迎來電諮詢。

歡迎來電諮詢, 歡迎來電諮詢 (DHL, FedEx, TNT UPS) 歡迎來電諮詢 我們竭誠為您服務。

### Q : 3. 歡迎來電諮詢 我們竭誠為您服務 ?

A : 歡迎來電諮詢 我們竭誠為您服務 歡迎來電諮詢 我們竭誠為您服務。

### Q : 4. 歡迎來電諮詢 我們竭誠為您服務 ?

A : 歡迎來電諮詢 我們竭誠為您服務。 歡迎來電諮詢 5000 歡迎來電諮詢 3-7 天, 100,000 歡迎來電諮詢 7-15 天

### Q : 5. 歡迎來電諮詢 我們竭誠為您服務 ?

A : 歡迎來電諮詢, 歡迎來電諮詢, 歡迎來電諮詢 歡迎來電諮詢 歡迎來電諮詢。 OEM 歡迎來電諮詢 我們竭誠為您服務。

### Q : 6. 歡迎來電諮詢 我們竭誠為您服務 ?

歡迎來電諮詢 20 天內 歡迎來電諮詢 RFID 歡迎來電諮詢 / NFC 歡迎來電諮詢 / RFID keybod / RFID 歡迎來電諮詢, rfid 歡迎來電諮詢 歡迎來電諮詢 歡迎來電諮詢 歡迎來電諮詢 歡迎來電諮詢。