

## **Opis produktów**

---

Opis produktów

**A**Przycisk wyjścia drzwi dla systemu kontroli dostępu, wodoodporny dotykowy przycisk wyjścia

Funkcja:

- Bezdotykowy / bezdotykowy czujnik wyjścia (detekcja rozproszona)
- Technologia optyczna/podczerwieni
- Stopień ochrony IP-55 / Płyta ze stali nierdzewnej SUS 304
- Przyjazny dla użytkownika (zdrowa ochrona)
- Wolny od rozprzestrzeniających się chorób zakaźnych
- Zasięg detekcji: 0,1 ~ 10 cm
- Normalnie otwarte/normalnie zamknięte/wspólne wyjście przekaźnikowe
- Podwójne wskaźniki LED informujące o gotowości czujnika lub zbliżaniu się:

(1) Tryb gotowości czujnika: NIEBIESKA DIODA LED WŁĄCZONA

## **Szczegóły Obrazy**

---

Szczegóły Obrazy



Whatsapp: +86-13554918707  
E-mail: sales@goldbridgesz.com  
Website: www.goldbridgesz.com

# Waterproof Exit Button

Stainless steel panel /IP66 waterproof





## Stainless Steel Door Release Button

Waterproof  
IP67

PH: +86-13554918707  
E: sales@goldbridgesz.com  
W: www.goldbridgesz.com



ACM-K819-A  
115x40mm

ACM-K819-B  
86x50mm

ACM-K819-C  
115x70mm

ACM-K819-D  
86x86mm

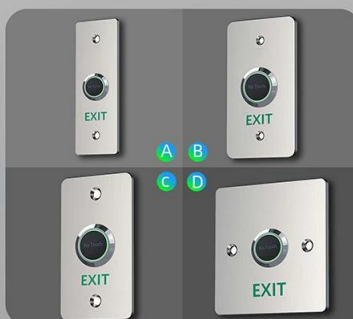
Power Supply: 12V-24DC  
Output Contact: NO/NC/COM

Panel Material: 1.8mm Thick Stainless Steel  
Mechanical Life: 500,000 tests

Operating temp: -20°C ~ +55°C(14-131F)  
Suitable Humidity: 0-95% (relative humidity)



www.goldbridgesz.com



A K841-A (115x40mm) B K841-B (86x50mm)  
C K841-C (115x70mm) D K841-D (86x86mm)

Touchless

## Infrared Sensor Exit Button

Power Supply: 12V-24DC  
Output Contact: NO/NC/COM  
Panel Material: 1.8mm Thick Stainless Steel  
Mechanical Life: 500,000 tests  
Operating temp: -20°C ~ +55°C(14-131F)  
Suitable Humidity: 0-95% (relative humidity)

PH: +86-13554918707  
E: sales@goldbridgesz.com

### Parametry produktu

Numer modelu	ACM-K841
Nazwa produktu	NIE Dotykowy przycisk wyjścia
Materiał	Stal nierdzewna
Rozmiar produktu	86*86mm
Napięcie zasilania	12 V prądu stałego
Wyjście stykowe	NO/NC/COM/LED
Maksymalny prąd	3A / 125-250VAC
Próba wytrzymałości	100 000 razy
Instalacja:	<b>ościeżnica pusta (montaż podtynkowy)</b>
Parametry pakowania	100szt/15kg/51*43*33cm/szt

### Szczegóły produktów



## Touchless Exit Button Introduction

NO Touch Style Exit Button;  
 NO/NC/COM;  
 5-15cm induction distance;  
 Stainless steel panel/customizable;

### ► Features

- Wide Voltage DC 12-24V
- Sensitive Distance 5-15cm
- NO/NC/COM
- Standby Blue LED, Active Green LED
- Laser texture, Not discolor

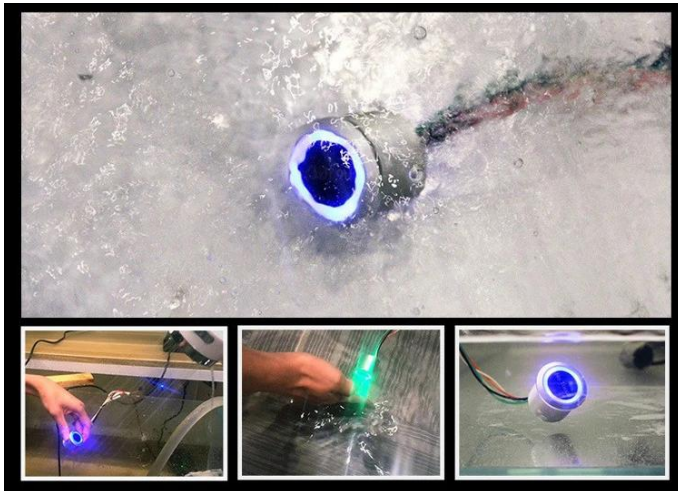
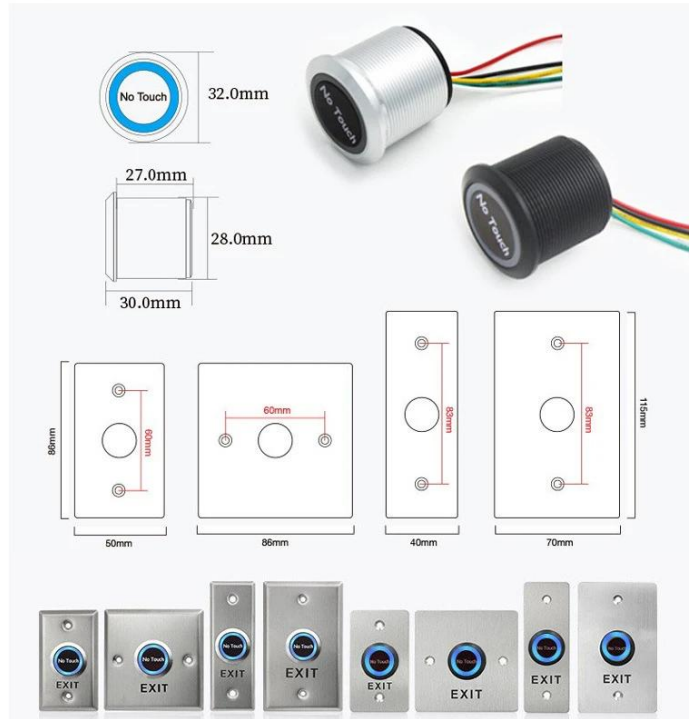
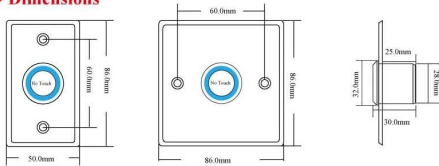


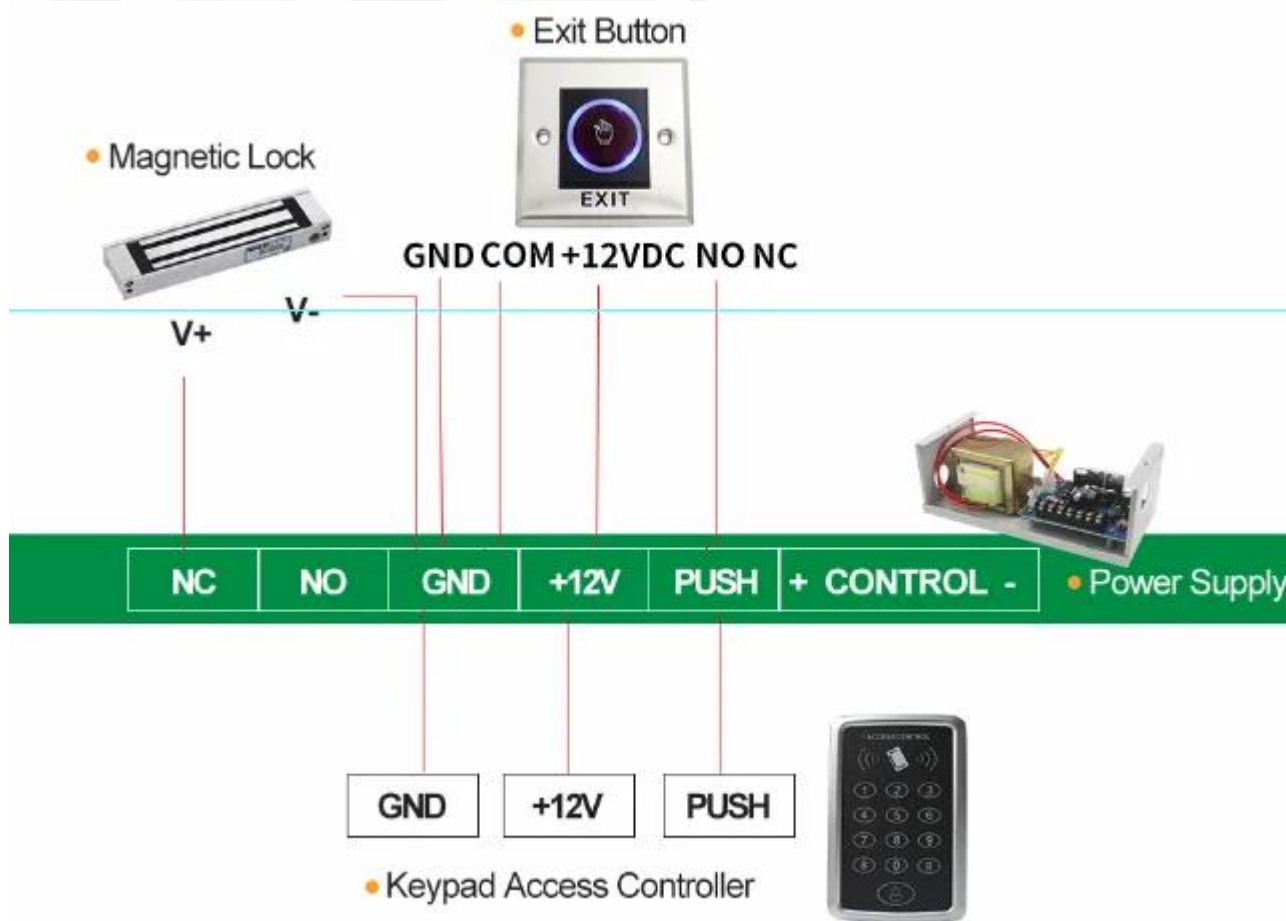
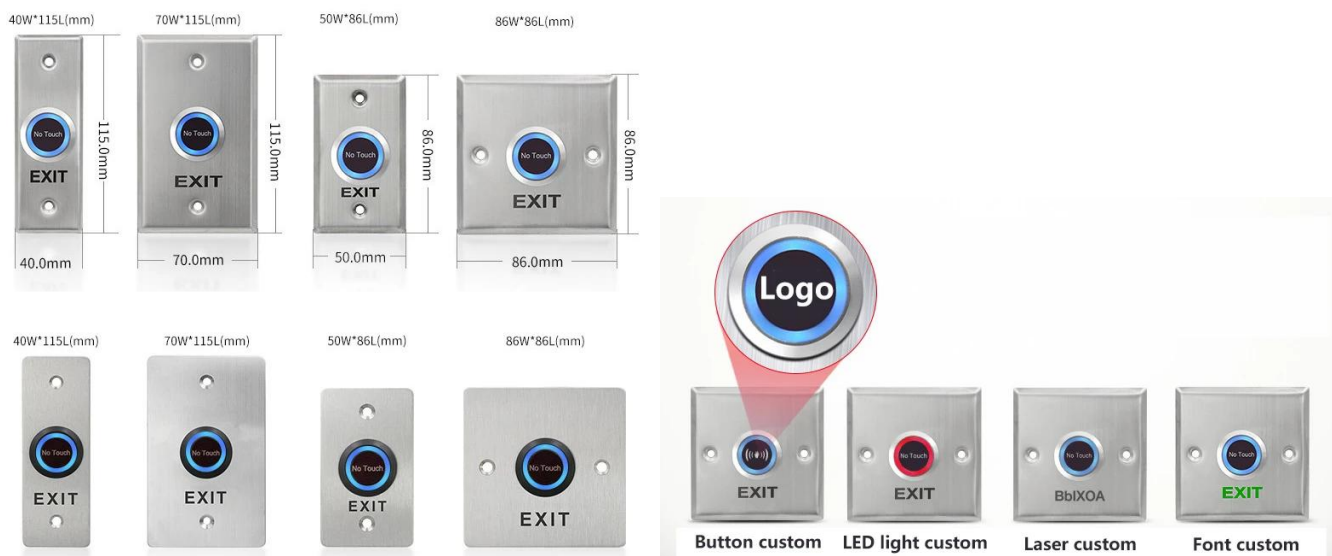
Model	ACM-K841-A		ACM-K841-B		Side
	86*50mm		86*86mm		
View	Front	Back	Front	Back	
Photos					

### ► Product Parameter

Model	ACM-K841-A	ACM-K841-B	Material	Stainless steel
Size(mm)	86L*50W*25H	86L*86W*25H	Panel logo	Customizable
Weight(KG)	0.08	0.1	Mechanical Life	500,000 Tested aging test qualified
Power Supply	DC12-24V		Accessories	Optional Back Box
Output Contact	NO/NC/COM		Operating Temp	-20°C~-55°C(-4-131F)
Sensitive Distance	5-15CM		Operating humidity	0-95% (RH)
LED Indicator	Standby blue, Response green. (Customizable)		Package Quantity	1 PCS/box, 100 PCS/case.

### ► Dimensions





## Polecaj produkty

Polecaj produkty  
 System zamykania szafek  
 System zamków do drzwi hotelowych  
 System inteligentnego zamka do domowego biura  
 System kontroli dostępu  
 System parkowania samochodu

## Powiązane produkty





### EXIT BUTTON

Email: [sales@goldbridgesz.com](mailto:sales@goldbridgesz.com)



**K6A K6AL** 91x28x20mm  
**K6D K6DL K6DW** 115x70x25mm 115x70x25mm 115x70x25mm  
**K4A K4AL** 86x50x33mm



**K6B K6BL** 86x86x38mm 86x86x38mm  
**K4B K4BL** 86x86x33mm 86x86x33mm



**K14E K14EL** 115x40mm  
**K14F K14FL** 115x70mm 115x70mm  
**K14A K13AL** 115x40mm  
**K14 K14DL** 115x70mm 115x70mm



**K14B K14BL** 86x50mm 86x50mm  
**K13B K13BL** 86x86mm 86x86mm  
**K13BE** 86x86mm



**K13AB K13A** 115x40mm 115x70mm  
**K13D K13BD** 86x50mm 86x86mm  
**K14C K14CL** 80x30x24mm 80x30x24mm



**K15A K15AL** 53x53x25mm 53x53x25mm  
**K15B K15C** 53x53x25mm 53x53x25mm



**K7A K7B** 91x28mm 115x70mm  
**K8A K8BL** 86x86x38mm 86x86x38mm  
**K4AC K4AD** 86x86x38mm 86x86x38mm



**K6AM K6BM** 115x40mm 115x70mm  
**K6CM K6DM** 86x50mm 86x86mm  
**K15BG K15BR** 53x53x25mm 53x53x25mm



**K14BR K14BG** 80x30x25mm 80x30x25mm  
**M40 M70** 115x40mm 115x70mm  
**M50 M86** 86x50mm 86x86mm

### TOUCH BUTTON

Email: [sales@goldbridgesz.com](mailto:sales@goldbridgesz.com)



**K9A K9B** 86x86x20mm 86x50x20mm  
**K40A K40B K40C** 86x86x18mm 86x86x18mm 86x40x18mm

### NO TOUCH EXIT BUTTON



**K2B K2A** 86x86x35mm 115x70x25mm  
**K9C K10A** 86x86x11.5mm 86x86x14mm



**K201G K201** 92x92x33mm 113x63x20mm  
**K406 K-WS** 80x32x23mm 80x80x28mm



**K505 K505W** Capacitive 86x86x14mm 86x86x14mm  
**K505MH K505MHW** Infrared 86x86x14mm 86x86x14mm



**K841A K841C** 115x40mm 115x70mm  
**K841B K842A K843A** 86x86mm 115x40mm 115x40mm

### PLASTIC BUTTON

Email: [sales@goldbridgesz.com](mailto:sales@goldbridgesz.com)



**K1 K1-1 K1-2 K1-3 K11A** 86x86x25mm 86x86x24mm 86x86x25mm 86x86x20mm 76x23x14mm



**P86 P77** 86x86x35mm 77x77x45mm  
Rated Current: 40A, Power off: 20s delay

### EMERGENCY DOOR RELEASE

Email: [sales@goldbridgesz.com](mailto:sales@goldbridgesz.com)



**K3R K3Y K3G K3W** 86x86x50mm 86x86x50mm 86x86x50mm 86x86x50mm



**K3RR K3RG K3** 86x86x50mm 86x86x50mm 87x87x60mm  
Transparent



**K4G K4GB K4GL K4RG** LED/Buzzer Red 86x86x50mm LED/Buzzer Green 86x86x50mm Without LED 90x93x45mm







# 20+ YEARS EXPERIENCE

# OEM & ODM

ACCESS CONTROL SYSTEMS ONE STOP SOLUTION PROVIDER

Goldbridge is Top 10 China Manufacture On Alibaba, Specializes In Provide Kinds Of RFID/NFC Cards, FID Tags, RFID Card Reader, UHF Reader, Access Control System, Electromagnetic Locks, etc Since 1999



Customized Services



Quality Assurance



Fast Delivery



Best After-Sales Service

## ADVANTAGE



### WHY CHOOSE US?

- 1 FAST DELIVERY** Faster delivery by air by express. (DHL, UPS or Fedex)
- 2 LONG HISTORY** 20 years experience in RFID & Access Control industry
- 3 OEM ACCEPTABLE** 20 years OEM&ODM experience for 1000 + VIP client from US and Europe
- 4 HIGH QUALITY** Design and manufacture high quality products with 30 R&D engineers.



Supplier's Company

# OUR FACTORY

## 1 Access Control and RFID Reader Production Line



- **Access Control and RFID Reader Production Line :**
- Monthly production quantity is up to 50,000pcs , We are Provides OEM&ODM services including product research and development, LOGO printing, customized.etc

## 2 Door Lock Production Line



- **Electromagnetic lock & Smart Door Lock Production Line :**
- Monthly production quantity is up to 100,000pcs ,
- Our factory is built with modern manufacture environment, facilities, equipment and professional operation technicians.
- Goldbridge Provides OEM&ODM services including product research and development, LOGO printing and product box customized.

## 3 RFID Cards & Tags Production Line



- **RFID & NFC Cards & Tags Production Line :**
- RFID Tag, Wristband, Keyfob: 11,000,000pcs (monthly output)
- Four Production Lines For Smart Card, PVC Card, Prelam Sheet: 20,000,000pcs (monthly output)
- Goldbridge Provides OEM&ODM services for LOGO printing, development, customized.

# APPLICATION

Bus, supermarket, school, government, hospital, factory



# CERTIFICATE



Access Control CE    Access Control Rohs    EM Lock EMC Certificate    EM Lock ROHS Certificate



RFID Card Reader CE    RFID Card Reader Rohs    UHF Reader CE Certificate    UHF Reader ROHS





## PRODUCT CATEGORY

### RFID / NFC SMART CARD

Be customized according to you need

Fit for systems of transport, E-payment, Access Control, Event, Loyalty, ect.



[View More](#)

### ACCESS CONTROL SYSTEM

Security for All: Network Access Control Board ,Standalone Access Controller, Biometric Access Control, T&A time attendance, Facial Access Control



[View More](#)

### RFID & LONG RANGE UHF READER

20+ Years of professional Experience in production of rfid uhf hardware

- UHF desktop reader writer,
- UHF integrated reader,
- UHF R2000 fixed reader,



[View More](#)

### ELECTROMAGNETIC LOCK

Professional Electric Locks Manufacturer In China

Electromagnetic lock with OEM & ODM since 1999 60KG /110KG /180KG /280KG /350KG /500KG



[View More](#)

## FAQ

**Q1** How can I place an order?

**A1** Click start to order or list your requirement to us by email. Then we will send the offer to you ASAP, after the order confirmed, we will arrange production ASAP.

**Q2** What about the payment and shipment?

**A3** T/T , Paypal, Western Union etc.  
You can choose your agent or via our agent by sea, air or express (DHL,FedEx, TNT UPS etc.)

**Q4** How can I get a sample to check your quality?

**A4** We could provide the sample to you, pls check the sample cost and freight cost with us.

**Q5** How long can I expect to get the goods?

**A5** It depends on the quantity and shipping way. You can check with us before ordered.

**Q6** Can your products be customized?

**A6** Almost all of our products are customized , including the material, size, thickness and printing. OEM orders are highly welcome.

[Contact Us](#)



[BACK TO HOMEPAGE >](#)

