

Product description

2.4GHz wireless video doorbell

The product is applicable in offices, houses, apartments, hotels, buildings, etc. The outdoor camera is easy to install, the indoor monitor is portable. It can be hung on the wall or placed on the desk.



P
a
d
m
e
t
e
a
D
a
m
e
t
e
p
t
i
o
n
P
r
4
G
H
z
w
n
a
m
b
e
s
s
v
i
d
e
o
d
o
o
r
b
e
l
l

R
C
w
a
r
t
e
p
p
B
y
2
4
V
,
D
C
1
2
~
3
6
V
o
r
3
2
m
A
h
B
K
O
h
7
7
2
5
2
r
4
G
H
e
n
c
y
S
c
b
e
n
o
h
e
s
e

Product feature

The title goes here.

(1) 2.4GHz digital frequency encryption and jump technology, transmission distance of up to 400 meters in free field (2) Clear night vision using the IR CUT switch. (3) Rain protection for outdoor camera is available (4) Monitor, unlock, hands-free calls and talk (5) 16 chord melodies, melody volume, conversation volume are adjustable (6) The indoor monitor can take photos automatically or manually, You can store up to 100 images. (7) Supports on and off unlock (8) An outdoor camera supports 4 indoor monitors and vice versa. (9) External camera size: 126 × 93 × 42 mm, CMOS 300k pixels, Power: AC battery 8 ~ 24 V, DC 12 ~ 36 V or 3200 mAh Internal monitor size: 236 × 130 × 18 mm, 3200 mAh battery Standby for outdoor camera and indoor monitor: 2 months



Camera



3.5 monitor

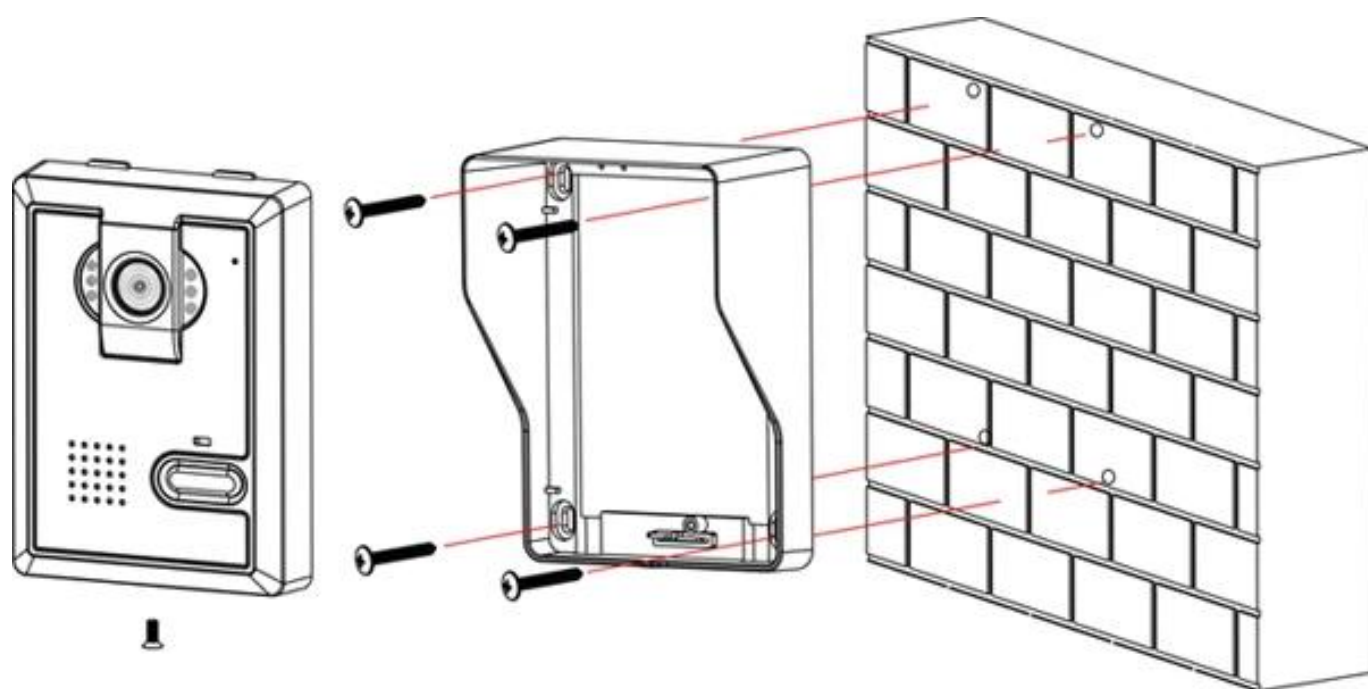
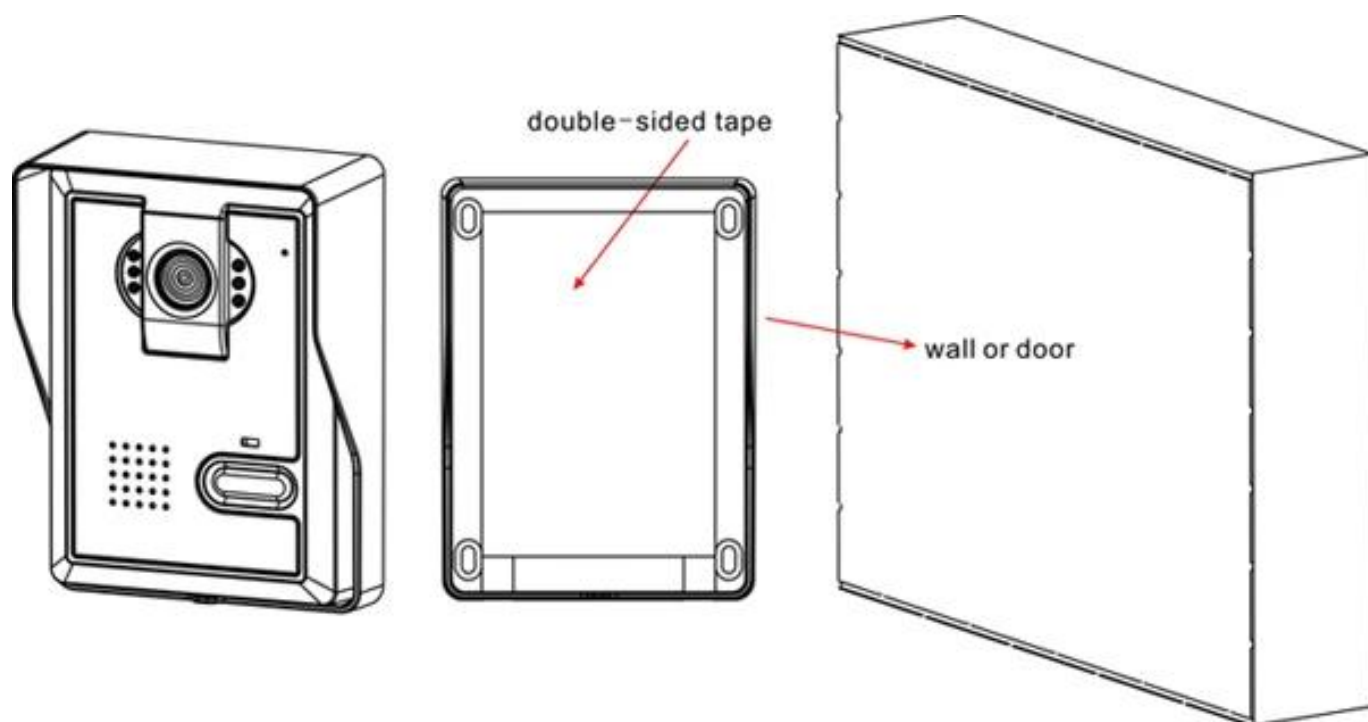
accessories



Smart Doorbell Installation

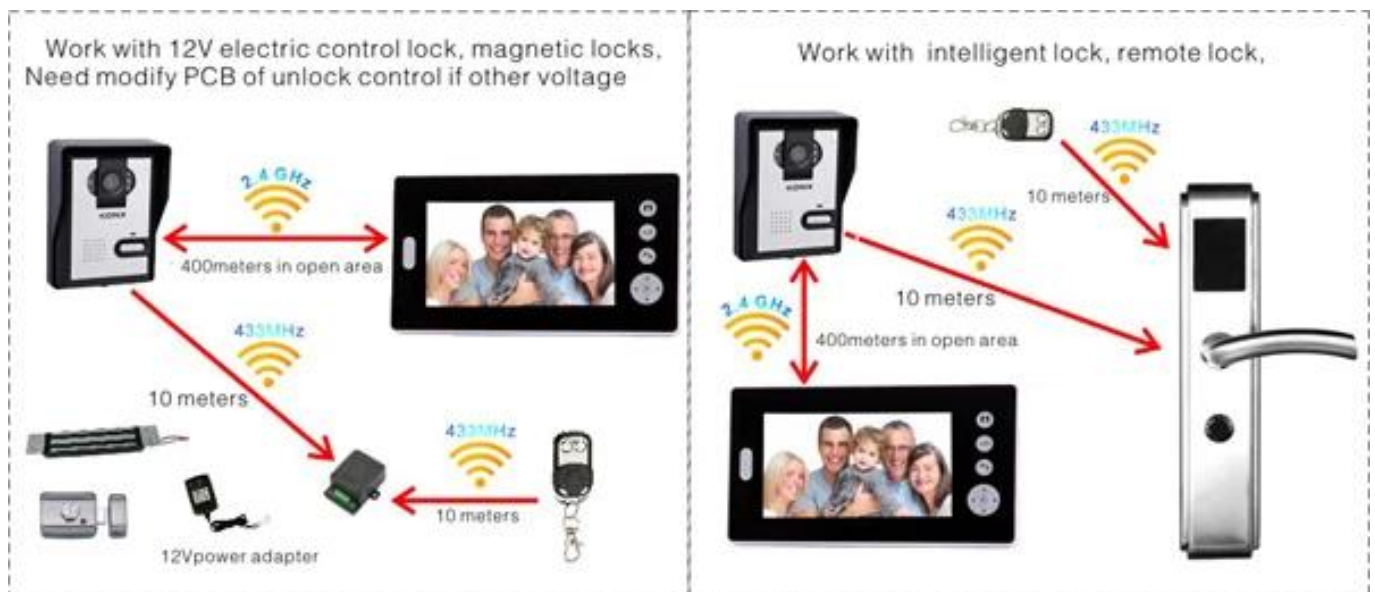
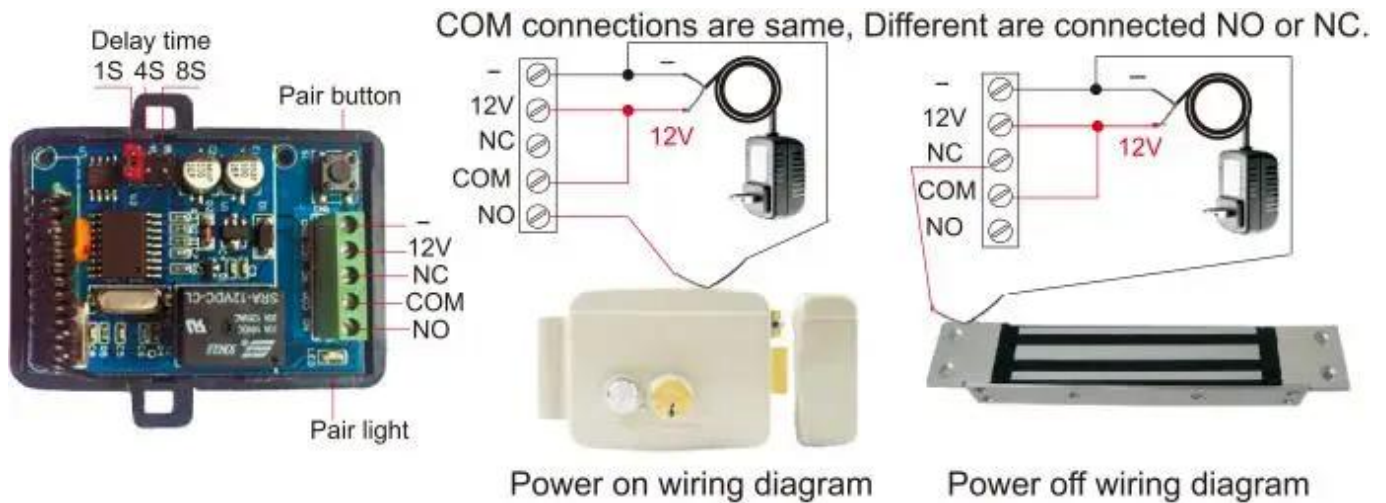
The outer chamber must be installed in the protected position so that strong light does not shine directly or rain. It is recommended that the installation height be 1.5 ~ 1.7m so that the outdoor camera is focused on the best monitoring range. The signal will weaken if there are obstacles between the outer chamber and the inner monitor. Check the monitor signal when installing the outdoor camera.

Use a double-sided tape camera on the wall or door.



E-lock connection

The electronic lock and the power of the electronic lock are not included in this product. The wireless unlock control connects e-lock, shares the 12V power adapter with e-lock when it works.



Quality guarantee

- The Warranty Service will be respected if the damage is not caused by humans, ACM Goldbridge provides 2 years warranty for related products.
- On the contrary, ACM Goldbridge will charge extra if it is repaired.
- More information, browse our service center.

Packaging and Delivery

Shipping way

We have strong cooperation with DHL, FEDEX, TNT, UPS, EMS, Forwarder by SEA and By AIR
You can also choose your own shipping agent.

packaging



related products



ACM-VB002

Smart video doorbell



ACM-VB001

WIFI video doorbell with 1080P
battery



ACM-VB003

2.4GHz wireless video doorbell



ACM-101

1MP / 2MP automatic tracking WiFi
cameras



ACM-211V

WiFi surveillance 360 degree
waterproof outdoor camera Fisheye



ACM-101X

Intelligent low power smart wireless
wifi camera doorbell for home



ACM-208

Weigand 125KHZ RFID proximity
smart card reader access control



ACM-WEG02

Weigand access control panel 2-door
access control panel



ACM-Y066

Single cylinder 12V DC Smart remote
control Tire lock

[Click here to order and have your SAMPLE in 3 days!](#)

We are a professional provider of integral security access control products with 20 years of experience, we make sure to offer the best solution of access control system solution! Therefore, send the details of your inquiry then click "Send" now.

We hope to form successful business relationships with new customers worldwide in the future.

Our service

- 1, any question will be answered within 24 hours
- 2, professional manufacturer and supplier, welcome to visit our website and our factory
- 3, OEM / ODM available
- 4, high quality, fashion design, reasonable and competitive price, fast delivery time
- 5, after sales service:
 - 1), all products will have been strictly controlled by the quality in the house before packing
 - 2), all products will be well packed before shipment
 - 3), all our products have a 2-3 year warranty if the damage is not caused by humans
- 6, faster delivery : About 1 ~ 5 days for sample orders, 7 ~ 30 days for bulk orders
- 7, payment: You can pay for the order through: T / T, Western Union, Paypal, Ali trade assurance
- 8, shipping: We have strong cooperation with DHL, FEDEX, TNT, UPS, EMS, Forward by Sea and BY AIR, you can

also choose your own shipping forwarder.