

110-240 VAC Input 12V Output Switching power supply 12V 3A Access control Power Supply

3A Current power supply

Built-in reverse surge protection and Short-circuit protection function.

This power supply is suitable for building intercom, various entrances access control, particularly suitable for all kinds of electric locks

P
a
P
a
m
d
t
e
t
D
a
s
a
m
è
p
e
r
o
n

2
3
*
1
0
3
*
p
2
m
m
r
i
p
p
U
p
e
w
s
o
p
h
v
t
a
g
e
I
n
p
u
t
C
o
n
t
r
o
l
l
e
d
g
e
I
n
p
u
t
F
e
e
d
b
a
c
k
u
n
c
y

O
u
t
p
D
C
4
0
V
t
a
g
e
O
u
t
p
u
t
c
u
l
r
A
r
e
s
h
A
t
/
5
O
A
p
t
i
o
n
a
l
)

O
u
t
p
u
t
~~v~~
o
l
%
a
g
e
i
5
%
m
r
a
n
g
e
L
o
a
%
t
y
p
b
i
h
i
t
y
T
i
m
e
D
e
t
a
y

A
c
c
e
s
s
c
o
n
t
r
o
l

O
f
t
h
e
P
e
r
f
o
r
m
a
n
c
e
o
f
t
h
e
C
o
n
t
r
o
l
l
e
d
g
o
v
e
r
n
m
e
n
t

,
R
e
l
e
a
s
e
B
u
t
t
o
n

a
t
f
u
H
b
l
d
a
il
m
p
p
2
m
s
W
o
r
k
i
n
g
t
e
m
p
e
c
a
t
u
r
e

S
t
e
e
t
m
a
d
a
r
h
e
s
p
g
h
a
t
e
d
s
h
o
r
r
t
C
h
r
i
s
t
i
a
n
i
t
i
o
n

Access to the Electric Clock

W
a
m
o
a
n
h
y

Detailed Images

1: NO terminal and COM terminal , normally open no output , the key trigger output DC12V, connected electronically controlled lock(0-15 seconds delay , a positive , three negative) ;

2: NC terminal and COM terminal , normally closed output DC12V, after the power button is triggered, then the electric or magnetic latch, Power locks (0-15 seconds delay , 2 positive, 3 negative) ;

3: DC12V output voltage regulation, 4 is positive , 5 negative ;

4: open button input terminal (for negative power supply) , which can be accessed switch output(relay output, low)control Electric lock access control system ;

5: open button input terminal (on the positive power supply) , which can be accessed switch output(relay output, high level) control ,Electric lock access control system ;

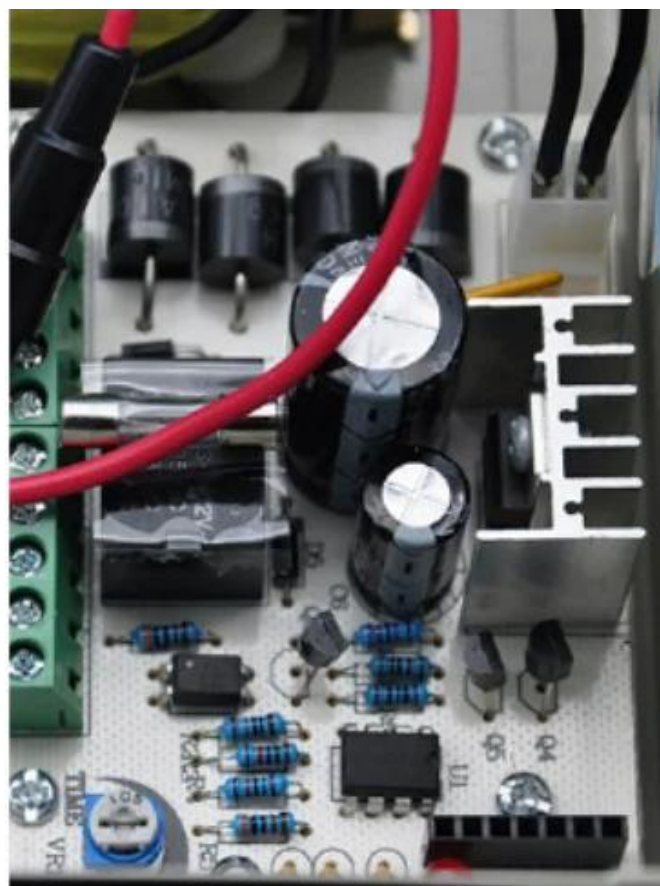
6: 12V input voltage door, dedicated to the direct control of the output voltage electric lock access control



POSITIVE



BACK



Application

Scope of Application



Company



Hospital



Hotels



Logistics



Port



Financial



Government



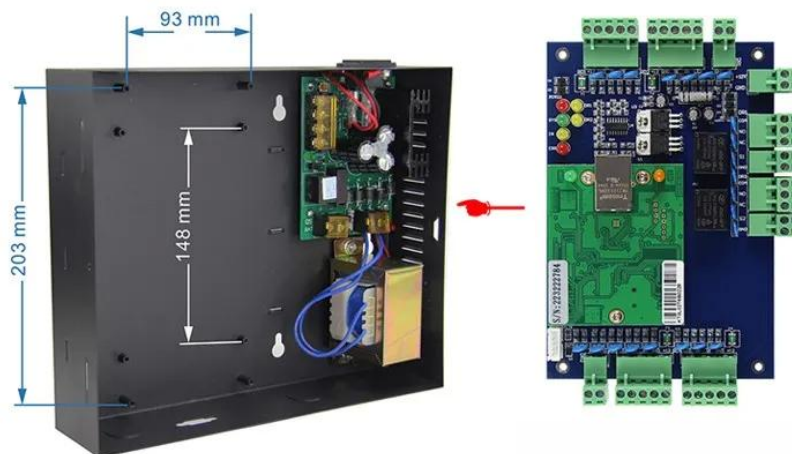
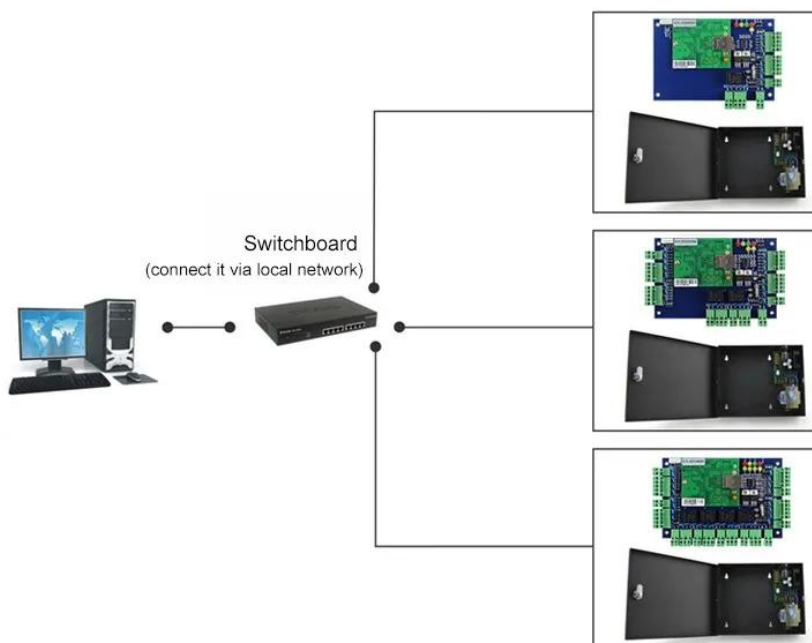
Factory



Aviation

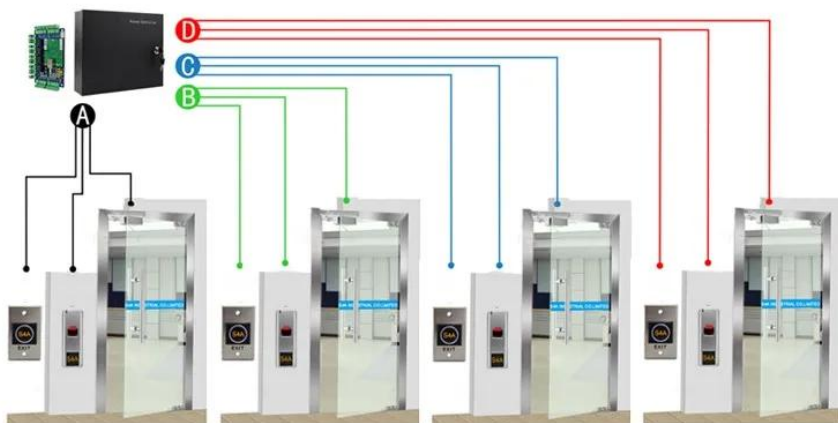


School



Kindly remind:

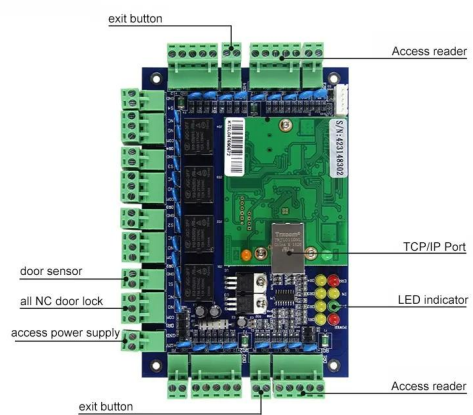
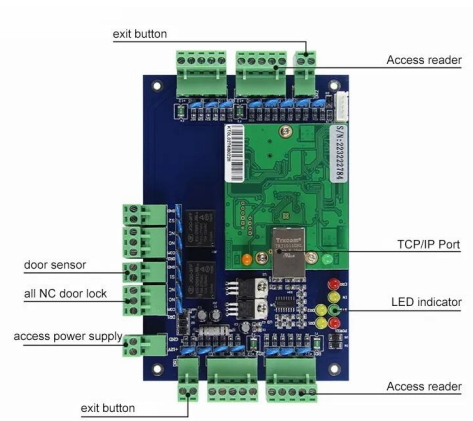
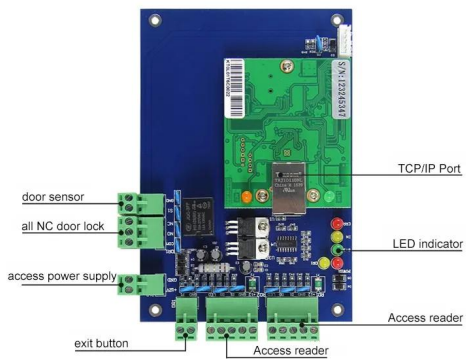
All network control board must configure with access power supply.
1 board for 1 power supply



ACM-WEG04

Four doors 1 way: Control 4doors (Enter by Swipe cards and Exit by Push button)

Related Products



ACM-WEG01

It can control 1 door.

ACM-WEG02

It can control 2 door.

ACM-WEG04

It can control 4 door.

You May Like



ACM-K2A/B

No touch Door Release Exit Button with led

ACM-Y280

Surface mounted magnetic lock (280kg/600lbs)

ACM-Y806-5A

Power supply 5A for access control



ACM225

Touch Keypad RFID Access Control
12khz

ACM-210

Metal Waterproof RFID Wiegand
Access Control

ACM26X

125Khz EM Card RFID Reader Size:
115mm×75.5mm×16.8mm



ACM-EMI-S

125Khz TK4100 chip rfid proximity
Card

ACM-STICKER

RFID stickers,125khz,13.56mhz and
860-960mhz

ACM-WBT-EM

Round Shape 125KHZ Silicone
Wristband

Our Service

- 1, Any inquiries will be replied within 24 hours
- 2, Professional manufacturer and supplier, Welcome to visit our website and our factory
- 3, OEM/ODM Available
- 4, High quality, fashion design, reasonable & competitive price, fast lead time
- 5, After-sale Service :
 - 1), All products will have been strictly quality checked in house before packing
 - 2), All products will be well packed before shipping
 - 3), All our products have 2-3 year warranty if the damage is not caused by human
- 6, Faster delivery : Around 1~ 5 days for sample order, 7~30 days for bulk order
- 7, Payment : You can pay for the order via : T/T, Western Union, Paypal
- 8, Shipping: We have strong cooperation with DHL, FEDEX, TNT, UPS, EMS, Forwarder by SEA and By AIR, You also can choose your own shipping forwarder.

FAQ

Q: 1. How can I place an order?

A: Please list your requirement to us via email. Then we will send the offer to you at earliest time, after order confirmation, we will arrange production ASAP.

Q: 2. What about the payment and shipment?

A: T/T, Paypal, Western Union.

Clients can choose by sea, air or express (DHL, FedEx, TNT UPS etc.)

Q: 3. How can I get a sample to check your quality?

A: We could provide free sample to you, and the freight cost paid by you.

Q: 4. How long can I expect to get the samples?

A: It depends on the quantity. Normally 3-7 days for 5000 pcs and 7-15 days for 100,000 pcs

Q: 5. Can your products be customized?

A: Almost all of your products are customized, including the material, size, thickness and printing. OEM orders are highly welcome.

Q: 6. Are you a trading company or factory?

We are one of the biggest manufacturers of RFID cards/NFC tags/RFID keyfobs/RFID wristbands/RFID reader and access control products in China more than 20 years.