

Product description



280kg 600lbs security electric magnetic wood glass door lock with 7 pins

Magnetic lock with 600 lbs (280 kg) holding force for single door

P
a
P
a
m
e
t
e
r
p
l
a
s
a
m
e
p
e
r
i
o
n
B
B
S
A
K
S
2
5
m

W
o
o
d
d
e
n
d
r
o
o
r
,
C
u
l
t
u
r
e
l
o
g
y
,
C
o
m
m
u
n
i
c
a
t
i
o
n
s
,
a
n
d
E
n
v
i
r
o
n
m
e
n
t
a
l
S
t
u
d
i
e
s
,
M
a
n
a
g
e
r
i
a
l
S
t
u
d
i
e
s
,
P
u
b
l
i
c
A
d
m
i
n
i
s
t
r
a
t
i
o
n
s
,
P
o
l
i
t
i
c
a
l
S
c
i
e
n
c
e
s
,
S
o
c
i
e
t
y
,
a
n
d
I
n
t
e
r
n
a
t
i
o
n
a
l
B
u
s
i
n
e
s
s
M
a
n
a
g
e
r
i
a
l
S
t
u
d
i
e
s
,
E
n
v
i
r
o
n
m
e
n
t
a
l
S
t
u
d
i
e
s
,
a
n
d
I
n
t
e
r
n
a
t
i
o
n
a
l
B
u
s
i
n
e
s
s
M
a
n
a
g
e
r
i
a
l
S
t
u
d
i
e
s

F
e
e
d
b
a
c
k
s
i
g
n
a
t
u
r
e
d
i
m
p
r
i
n
t
i
n
g
;
N
O
/
N
C
/
C
O
M
/
+
/
-

F
a
i
l
S
a
f
e
,
t
i
m
e
r
d
e
l
a
y
,
C
h
e
a
d
b
a
t
k
s
i
g
n
i
c
;
d
u
a
l
v
o
l
t
a
g
e
1
2
V
/
2
4
V
D
C

R
e
d
s
h
o
w
s
u
n
l
o
c
k
e
d
W
h
i
t
h
:
C
e
r
t
i
f
i
c
a
t
i
o
n
:

Advanatge product

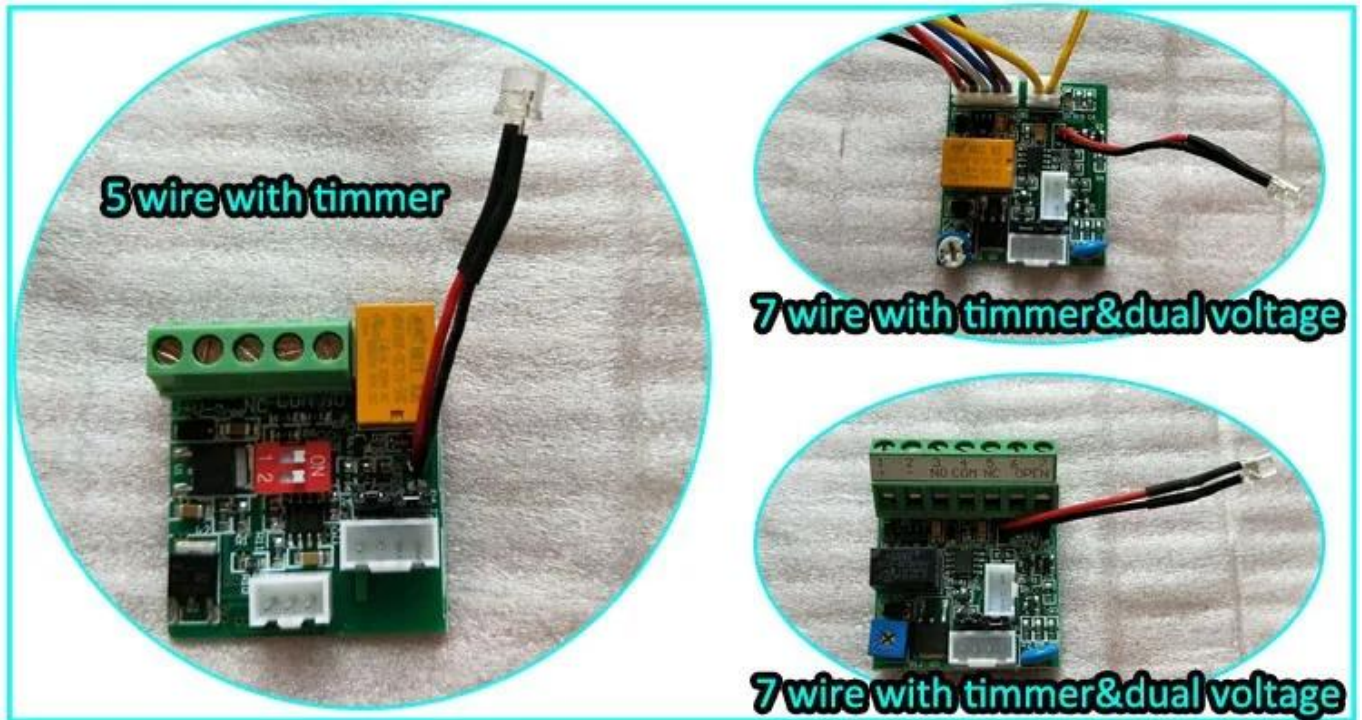
- Collinear load test 280kg, 600lbs.
- Dual voltage 12 or 24 VDC (optional).
- Standard voltage is 12VDC when finished.
- MOV provides reverse current protection.
- Suitable for wooden doors, glass doors, metal doors, fire doors.
- LED Indicates the status of the door.
- Block status sensor (NO / NC / COM)
- Door status sensor (NO / NC / COM)
- Anti-residue magnetism designed.
- High strength material, anodized aluminum housing.
- Design without mechanical failures.
- Increase the holding force, double insulated housing.
- CE certified by the European Union, MA certified by the Chinese Public Security Office

Detailed pictures, OEM / ODM available



Our lock is with LED light to show the working statue, the light is green when locked, red when unlocked . The glowing statue can be changed.

ACM-Y280 is equipped with signal output. The PCB board can be customized. We can make the lock with dual voltage 12v and 24v and with 7-wire connection. The following photo is the optional PCB board.If you want to customize the lock, please tell us your detail request, we will send your detailed quotation after knowing all your needs.



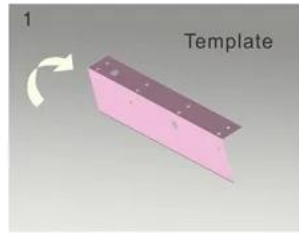
Quality assurance

- Warranty service will be honored if the damage is not caused by people, ACM Goldbridge provides 2 years warranty for related products.
- On the contrary, ACM Goldbridge will require extra in case of repair.
- More information, please consult our service center.

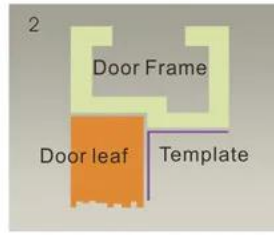
Installation diagram

STANDARD INSTALLATION STEPS

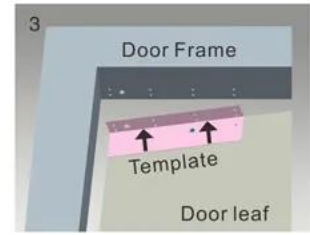
Professional guidance, Rest assured



1 Fold the plate to 90° .



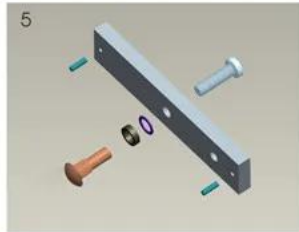
2 Close the door first, then place the upper side of template on door frame, while adjust the left side next to the door leaf.



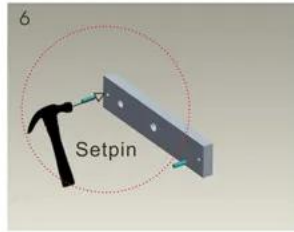
3 Mark screw positions of armature plate and magnetic lock on door leaf and door frame respectively.



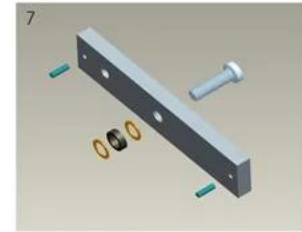
4 Drill holes based on the marked positions.



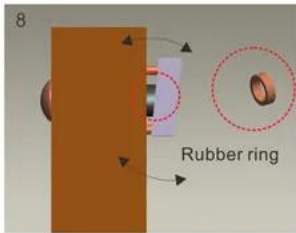
5 Make a combination based on the picture.



6 Strike the pin into the armature plate slightly (to avoid movement).



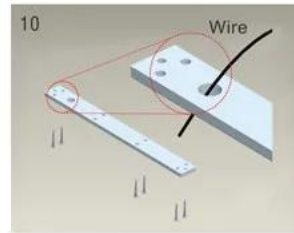
7 Make a combination based on the picture (add washer accordingly). The rubber ring must be added.



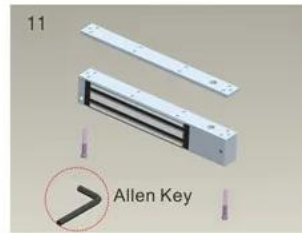
8 Place the rubber ring between armature plate and door leaf.



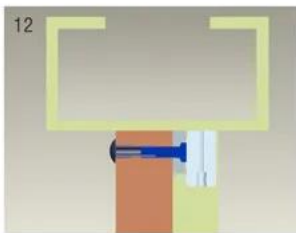
9 Use Allen key to remove the mounting plate from lock body.



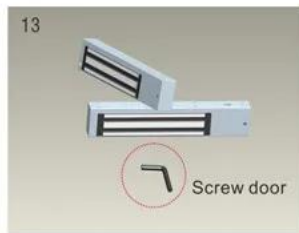
10 Fix the mounting plate on the door frame according to the holes drilled earlier.



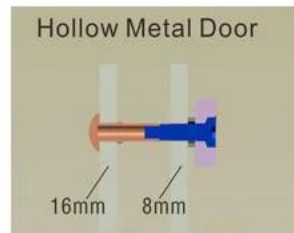
11 Use Allen key to screw the lock body on the mounting plate.



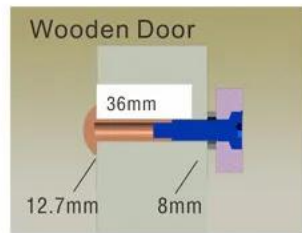
12 Close the door to test holding force. The angle between armature plate and magnetic lock can be adjusted by adding or reducing washers.



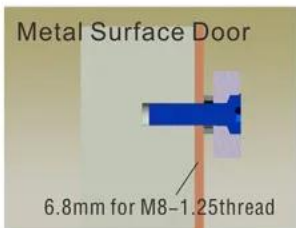
13 After all the appropriate procedures, the holding force can be maximized. Finally, fix the tamper screw.



Hollow Metal Door
Drill a hole
Inside: Diameter is 8mm
Outside: Diameter is 16mm



Wooden Door
Drill a hole
Inside: Diameter is 8mm
Outside: Diameter is 12.7mm



Metal Surface Door
6.8mm for M8-1.25thread
Inside: Drill a hole diameter is 8mm folding the plastic straight pin

Notice:

Thickness of Door Leaf:

350LBS: 44mm

600LBS: 50mm

800LBS: 48mm

1200LBS: 46mm

Packaging and delivery

Shipping way

We have strong cooperation with DHL, FEDEX, TNT, UPS, EMS, Forwarder by SEA and By AIR
You can also choose your own forwarder.

Packaging

Magnetic lock packaging: 1 unit per box, 12 pcs per carton,
Carton size: 54.3 * 13.5 * 19.3cm, gross weight: 25 kg. 50 cartons per pallet



related products



ACM-Y280N

Magnetic Back Plate Lock (280kg / 600lbs) Suitable for: wooden door, glass door, metal door, fire | Proof port

ACM-Y180

Surface mount magnetic lock (180kg / 300lbs) 2 bolt fail-safe. Suitable for: wooden door, glass door, metal door,

fire door.

ACM-Y280

280kg (600lb) single door magnetic lock suitable for: wooden door, glass door, metal door, fire door.



ACM-Y350

Single Door Magnetic Lock 350kg (800lbs) Suitable for: wooden door, glass door, metal door, fire door.

ACM-Y500

500kg (1000lbs) Single Door Magnetic Lock Suitable for: wooden

door, glass door, metal door, fire door.

ACM-Y280-W

Waterproof Single Door Magnetic Lock 280kg (600lbs) Suitable for: wooden door, glass door, metal door, fire door.

You may need



ACM-Y100S

Electric bolt (5PIN) Safe electric bolt

with magnetic function

ACM-Y130

Electric strike lock (NC / NO
optional)

Block size: 110x28x31mm

ACM-Y066

Intelligent Smart Lock (engine lock)

Lock dimensions: 130x98x41mm

Bracket required with magnetic door lock



ACM-Y280-L

L-bracket for 280 kg / 350 kg
magnetic lock

ACM-Y280ZL

ZL bracket for 280 kg magnetic lock

ACM-Y280-ZL

ZL bracket for 280Kg / 350Kg
magnetic lock

Our service

- 1, All inquiries will be answered within 24 hours
- 2, professional manufacturer and supplier, welcome to visit our website and factory
- 3, OEM / ODM available
- 4, high quality, fashion design, reasonable and competitive price, fast delivery time
- 5, after-sales service:
 - 1), All products will have been strictly checked in house before packing
 - 2), All products will be well packed before shipping
 - 3), All of our products have 2-3 years warranty if the damage is not caused by man
- 6, faster delivery : About 1 ~ 5 days for sample order, 7 ~ 30 days for bulk order
- 7, payment: You can pay for the order via: T / T, Western Union, Paypal
- 8, Shipping: We have strong cooperation with DHL, FEDEX, TNT, UPS, EMS, Forwarder by SEA and By AIR, you can also choose your own forwarder.