

## Product Description



## A4 Sheets Layout 2\*5 Prelam PVC Sheet 125khz RFID TK4100 Card Inlay

As a leading smart card inlay manufacturer, we produce and provide RFID inlay that have

- 1.multiple layouts available.
- 2.multiple chips available.
- 3.multiple chip combination available.
- 4.smooth surface and custom thickness.
- 5,quick turnaround and factory level prices.

L  
o  
w  
f  
r  
e  
q  
u  
e  
n  
c  
y  
1  
2  
5  
K  
H  
z  
c  
h  
i  
p  
s  
,  
h  
i  
g  
h  
f  
r  
e  
q  
u  
e  
n  
c  
y  
1  
3  
.  
5  
6  
M  
H  
z  
p  
h  
A  
p  
a  
i  
h  
h  
b  
t  
a  
-  
h  
i  
g  
h  
f  
r  
e  
q  
u  
e  
n  
c  
y  
8  
6  
-  
9  
6  
M  
H  
z  
c  
h  
i  
p  
s  
,  
a  
n  
d  
h  
y  
b  
r  
i  
d  
c  
h  
i  
p  
s

I  
S  
O  
1  
4  
4  
4  
3  
A  
,  
I  
S  
O  
1  
5  
6  
6  
9  
3  
,  
I  
S  
O  
9  
1  
1  
9  
6  
8  
4  
7  
8  
5  
,  
I  
S  
O  
1  
8  
-  
6  
C  
/  
E  
P  
C  
C  
1  
e  
t  
c  
C  
o  
p  
p  
**A**  
**a**  
t  
**A**  
**n**  
**n**  
**n**  
**n**  
**a**  
3  
1  
\*  
4  
6  
8  
m  
m  
,  
5  
2  
**D**  
\*  
i  
a  
m  
2  
e  
m  
m  
s  
i  
2  
0  
1  
4  
2  
9  
7  
m  
m  
,  
e  
t  
c  
.

W  
o  
r  
k  
i  
n  
g  
C  
e  
m  
p  
o  
s  
e  
t  
u  
r  
e  
C  
A  
p  
p  
r  
o  
d  
u  
c  
t  
i  
o  
n  
g  
P  
a  
i  
d  
b  
y  
T  
/  
T  
.  
C  
r  
e  
d  
i  
t  
C  
o  
m  
p  
a  
n  
y  
W  
e  
s  
t  
e  
r  
n  
U  
n  
i  
o  
n  
.  
P  
a  
y  
p  
a  
l  
F  
r  
e  
e  
s  
a  
m  
P  
r  
a  
c  
t  
i  
c  
e  
P  
o  
p  
o  
l  
e  
a  
i  
l  
a  
b  
l  
e

## Detailed RFID INLAY

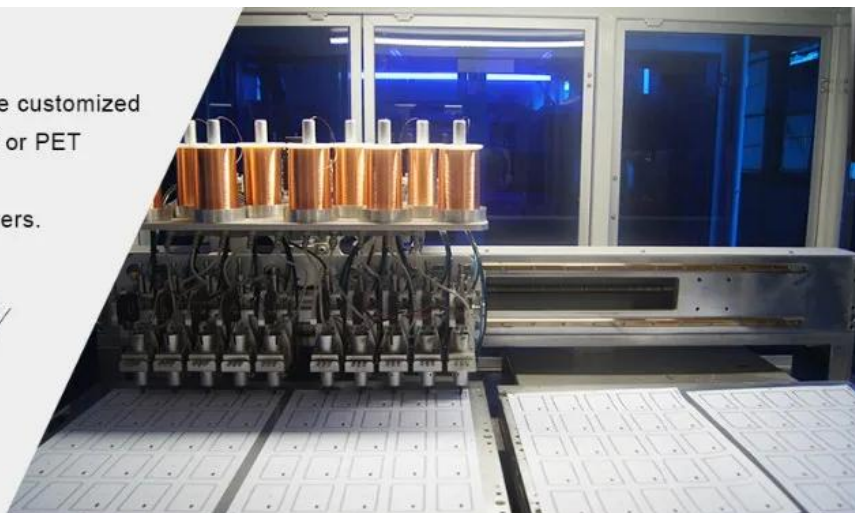
We have many kinds of RFID INLAY sheet size for you to choose. Our regular size is 25pcs(305x460/325x480), 24pcs(300x480/290\*480), 8/10/16/20pcs(210x297), 40/48pcs(210x297)

### RFID Inlay

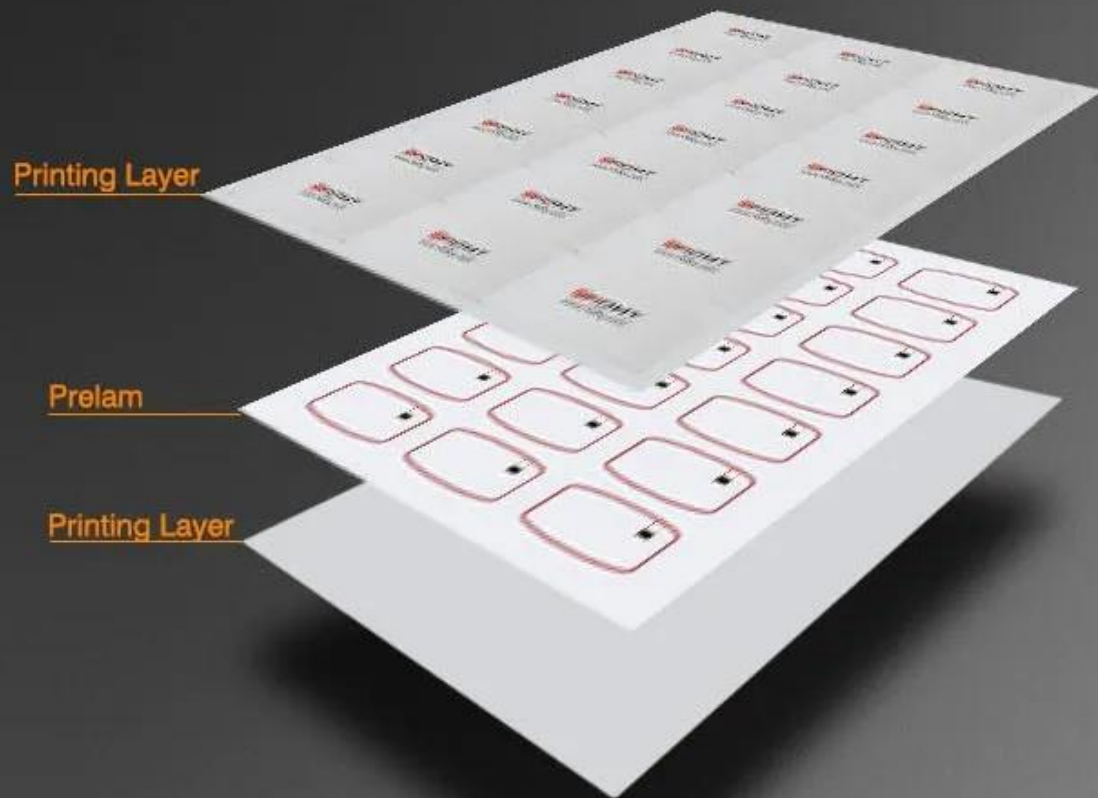
Supply 0.4/0.5/0.6/0.75mm inlay, can be customized

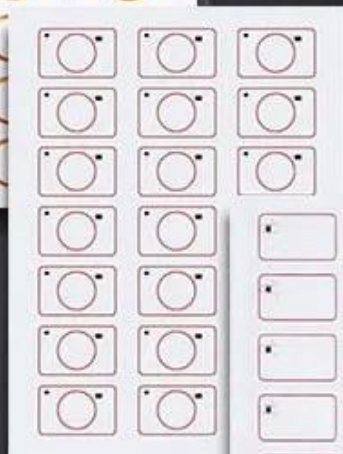
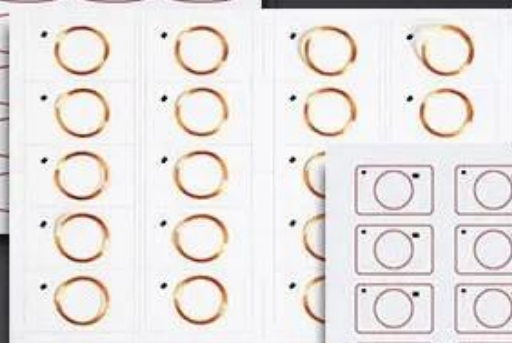
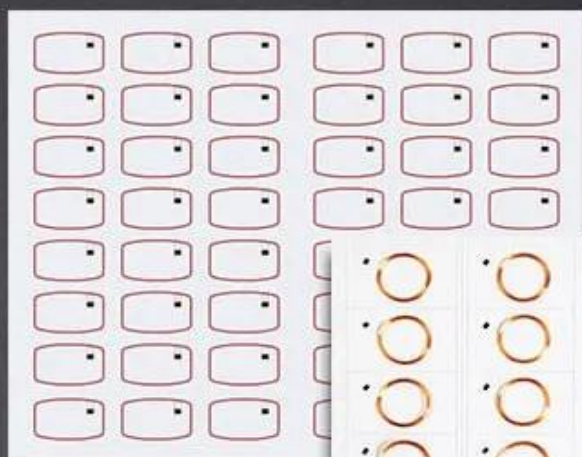
Workmanship: thermal lamination, PVC or PET material in options

Ready to use by smart card manufacturers.



## STRUCTURE





## CUSTOMIZABLE

It can be customized according  
to the format you need

## THICKNESS

**Normal:0.60mm**

**Min:0.50mm**



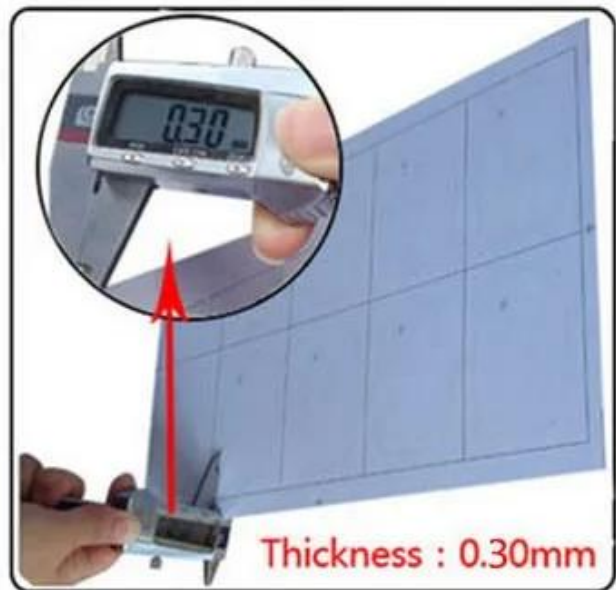
**Normal:0.45mm  
0.50mm**

**Min:0.30mm**



**Normal:0.40mm  
0.45mm**

**Min:0.30mm**



## Packing & Delivery

Every order we will check the quality firstly to ensure our customer get the best product. Our staff will pack it carefully to avoid the damage of transportation. We will ship every goods out as soon as possible.



## THE PACKAGING PROCESS



Windinig prelam Inlay

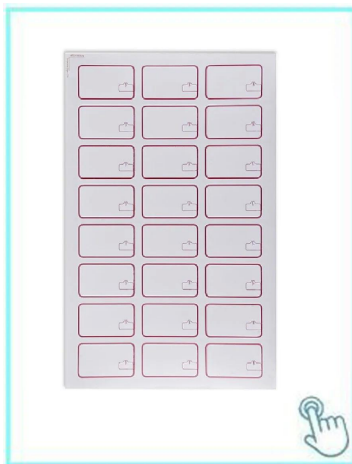
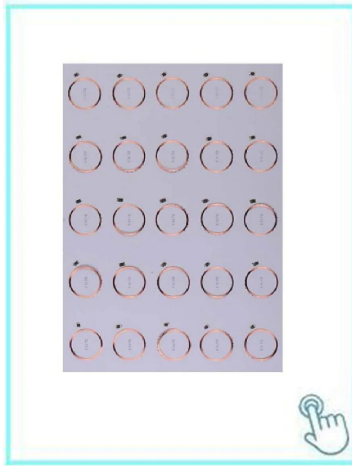


Carton packaging



Carton packaging

Your May Need



### **ACM-INLAY-EM-TK4100**

125khz TK4100 chip inlay for card production

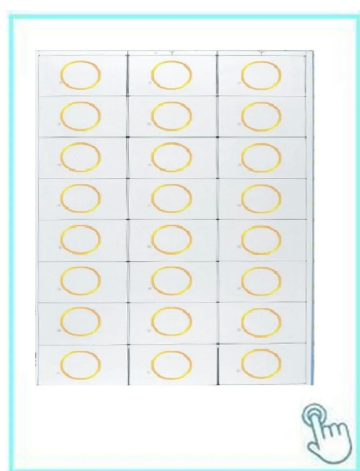
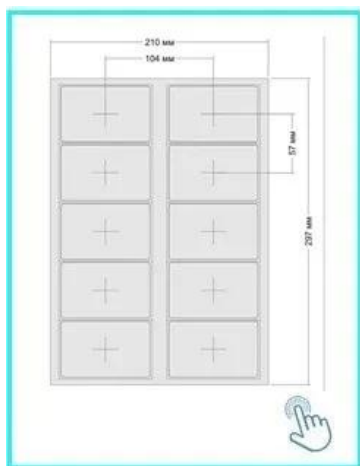
### **ACM-INLAY-MF 1K-F08 chip**

13.56mhz F08 chip inlay for card production

### **ACM-INLAY-MF 1K-S50 Original**

MF 1k S50 original chip inlay for card

production



### **ACM -inlay**

MF 4K S70 original chip card inlay for card production

### **ACM-INLAY-T5577**

T5577 chip card inlay for card production

### **ACM-INLAY-UHF-6C**

UHF chip card inlay for card  
production

## Our Service

- 1,Any inquires will be replied within 24 hours
- 2, Professional manufacturer and supplier, Welcome to visit our website and our factory
- 3, OEM/ODM Available
- 4, High quality, fashion desing, reasonable & competitive price, fast leadtime
- 5, After-sale Service :
  - 1) All products will have been strictly quality checked in house before packing
  - 2) All products will be well packed before shipping
  - 3) All our products have 2-3 year warranty if the damage is not caused by human
- 6, Faster delivery : Around 1~ 5 days for sample order, 7~30 days for bulk order
- 7, Payment : You can pay for the order via : T/T, Western Union, Paypal, Ali trade assurance
- 8, Shipping: We have strong cooperation with DHL, FEDEX, TNT, UPS, EMS, Forwarder by SEA and By AIR, You also can choose your own shipping forwarder.

### Quality warranty:

Warranty service will be honored if the damage is not caused by human, ACM Goldbridge provides 2 years warranty for relative products.  
On the contrary, ACM Goldbridge will charge extra if repair.  
More information, please browse our service center.

## FAQ

### Q: 1. How can I place an order?

A: Please list your requirement to us via inquiry. Then we will send the offer to you at earliest time, after order confirmation, we will arrange production ASAP.

### Q: 2. What about the payment and shipment?

A: Trade Assurance and T/T, Paypal, Western Union.

Clients can choose by sea, air or express (DHL, FedEx, TNT UPS etc.)

### Q: 3. How can I get a sample to check your quality?

A: We could provide free sample to you, and the freight cost paid by you.

### Q: 4. How long can I expect to get the samples?

A: It depends on the quantity. Normally 3-7 days for 5000 pcs and 7-15 days for 100,000 pcs

### Q: 5. Can your products be customized?

A: Almost all of your products are customized, including the material, size, thickness and printing. OEM orders are highly welcome.

### Q: 6. Are you a trading company or factory?

**We are the one of the biggest manufacturer of RFID cards/NFCtags/RFID keybod /RFID wristband in China more than20 years.**