

# Outdoor 125khz proximity reader Keyless Door Entry System APP Access Control

## Product Description

Bluetooth Single door Access Controller

1. Metal Case, anti-vandal
2. Waterproof, conforms to IP66
3. One relay(Pulse mode, toggle mode)
4. 10000 users (Mobile phone users + Card users)
5. 2 ways to open the door: mobile phone and cards
6. Compatible with all Bluetooth-enabled mobile phones (version: 4.0 above)
7. APP support Android 4.3 and IOS7.0 above
8. Supports sending Remote E-key to users: the Administrator can control access time

## Product Picture

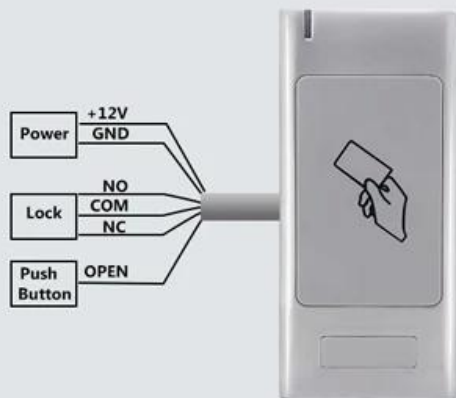


The Bluetooth is a metal case anti-vandal standalone access control that can be mounted both indoor and outdoor.

The unique feature is can be operated by mobile phone through Bluetooth or 13.56MHz Mifare card / 125KHz EM card.

The operation is very smart and convenient.

Waterproof IP66



6 wires, easy installing

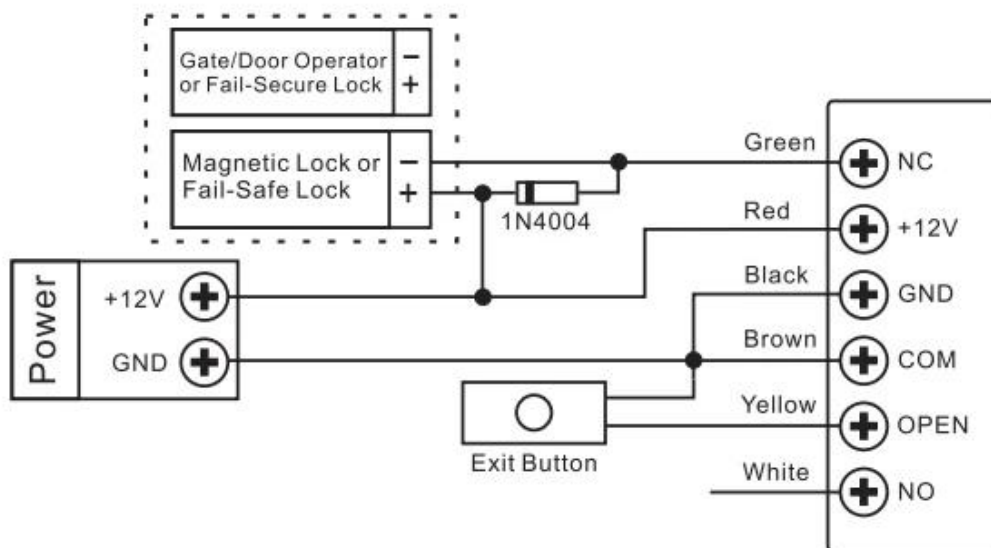
Metal Case, Anti-vandal



Built in LDR for anti tamper

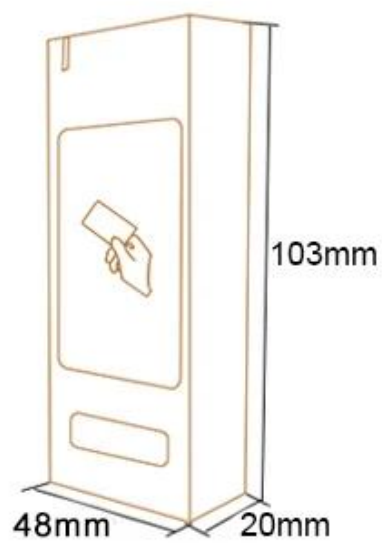
User Capacity	10,000
Card	13.56MHz Mifare Card (S6-BT MF) / 125KHz EM Card (S6-BT EM)
Mobile	Android 4.3 and IOS7.0 above
Operating Voltage	12V DC
Idle current	<35mA
Active current	<90mA
Proximity Card Reader	Mifare Card / EM Card
Radio Technology	13.56MHz / 125KHz
Card Read range	2~ 6cm
Bluetooth	Bluetooth Version:4.0 Above
Range	<20m(related to environment)
Reaction	<2seconds
Relay	One(NO, NC,Common)
Lock Output Load	2 Amp Maximum
Environment	Meets IP66
Operating Temperature	-20°C ~ +60°C
Operating Humidity	0%~98%
Physical	Zinc-Alloy Enclosure
Dimension	L103 x W48 x H19 (mm)
Net Weight	260g
Shipment Weight	300g

## Common Power Supply

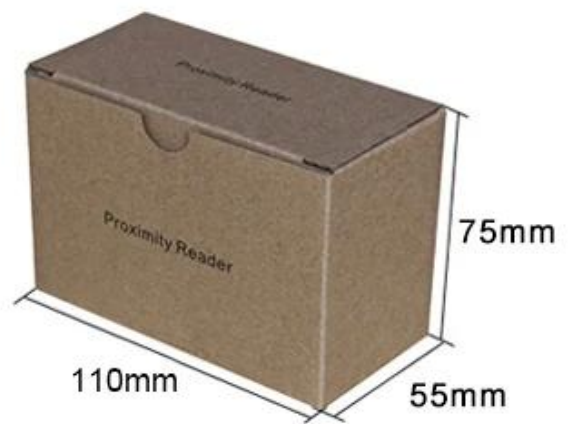


## Product Dimensions

Product Size



Box Size



**Carton Size**



Packing	40pcs/carton
Weight	10.8kg



You May Like

We are Professional Access Control Manufacturer, We have Full System for Access Control Product as below:



### **ACM223**

Touch Keypad RFID & Keypad  
Access Control , 125Khz EM  
1000/4000 USer capacity

### **ACM209-NW**

Keypad Metal RFID Single door  
AccessControl (Non-waterproof),  
125Khz EM

## ACM208

Waterproof RFID Single door Access  
Control and Reader



## ACM210

Metal RFID Single door Access  
Control (Non-waterproof)

## ACM225

Touch Keypad RFID Access

Control,125Khz EM, Can connect  
wiegand reader

## **ACM211B**

Touch Keypad Metal case  
Waterproof RFID Access Control,  
Can connect wiegand reader

## **Our Service**

- 1, Any inquiries will be replied within 24 hours
- 2, Professional manufacturer and supplier, Welcome to visit our website and our factory
- 3, OEM/ODM Available
- 4, High quality, fashion design, reasonable & competitive price, fast lead time
- 5, After-sale Service :
  - 1), All products will have been strictly quality checked in house before packing
  - 2), All products will be well packed before shipping
  - 3), All our products have 2-3 year warranty if the damage is not caused by human
- 6, Faster delivery : Around 1~ 5 days for sample order, 7~30 days for bulk order
- 7, Payment : You can pay for the order via : T/T, Western Union, Paypal, Ali trade assurance
- 8, Shipping: We have strong cooperation with DHL, FEDEX, TNT, UPS, EMS, Forwarder by SEA and By AIR, You also can choose your own shipping forwarder.

## **FAQ**

### **Q: 1. How can I place an order?**

A: Please list your requirement to us via mail. Then we will send the offer to you at earliest time, after order confirmation, we will arrange production ASAP.

### **Q: 2. What about the payment and shipment?**

A: Trade Assurance and T/T, Paypal, Western Union.  
Clients can choose by sea, air or express (DHL, FedEx, TNT UPS etc.)

### **Q: 3. How can I get a sample to check your quality?**

A: We could provide free sample to you, and the freight cost paid by you.

### **Q: 4. How long can I expect to get the samples?**

A: It depends on the quantity. Normally 3-7 days for 5000 pcs and 7-15 days for 100,000 pcs

### **Q: 5. Can your products be customized?**

A: Almost all of your products are customized, including the material, size, thickness and printing. OEM orders are highly welcome.

### **Q: 6. Are you a trading company or factory?**

We are one of the biggest manufacturers of RFID cards/NFC tags/RFID keypad /RFID wristband/RFID reader and access control products in China more than 20 years.



