



Fail Safe Electric Strike door lock is Suitable for Access control system

Y-136SNO/NC is designed for wooden door, metal door, PVC door and so on. The products of our company are various and full-equipped. The operating principle of electric strike is that the electric power turns into magnetic force. Electric strike has two working modes: one of the mode is door locked when power off. The another modes is door locked when power on.

P
a
P
a
m
e
t
e
t
D
a
s
a
m
e
p
e
r
o
n

1 4 19 6 3 9 5 13 4 e m l Z š h c a b t u y e H o l d i n g S t e n g t h

D
C
1
2
V
(
N
~~V~~
e
h
O
n
g
e
r
D
C
2
4
V
)
C
u
~~#~~
m
A
n
t

Wooden Door Surface Treatment
Metallic Door Surface Treatment
PVC Door Surface Treatment
Wire Mesh Door Surface Treatment

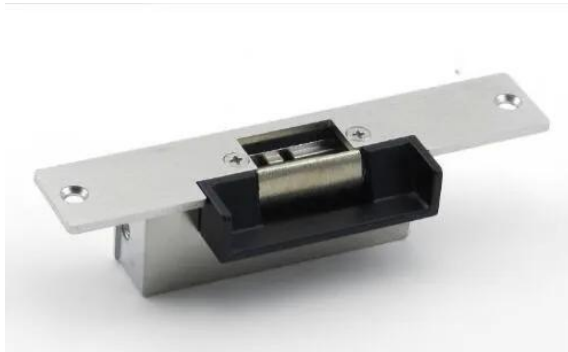
S u i t ~ a + b 5 1 5 e C (e i m 4 p e i r 3 a i f f u) e 0 9 % é n a h i n g H d m n d i h y)

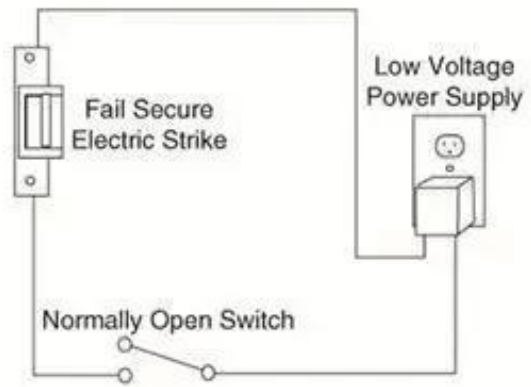
F
e
e
d
b
a
c
k
S
i
n
g
n
a
l
o
n
p
t
i
o
n
a
l
)

Product Advantage

- * Holding 500kg.
- * Special design,easy to adjust the distance of the Lock-tongue.
- * Designed for Metal Frame drill a hole,then install it directly.
- * Testing to 100000 cycles.
- * High-Temperature Painted,Durable and Beautiful Artical.
- * CE Certificate by European Union, MACertificate by China Public Security office.

Detailed Images , OEM/ODM available





More Features and Functions for This Stainless Steel Electronic Strike (NC/NO)

03 Low temperature design

less heat is safe and reliable.



04 Low Power Design

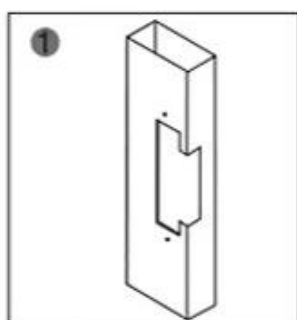
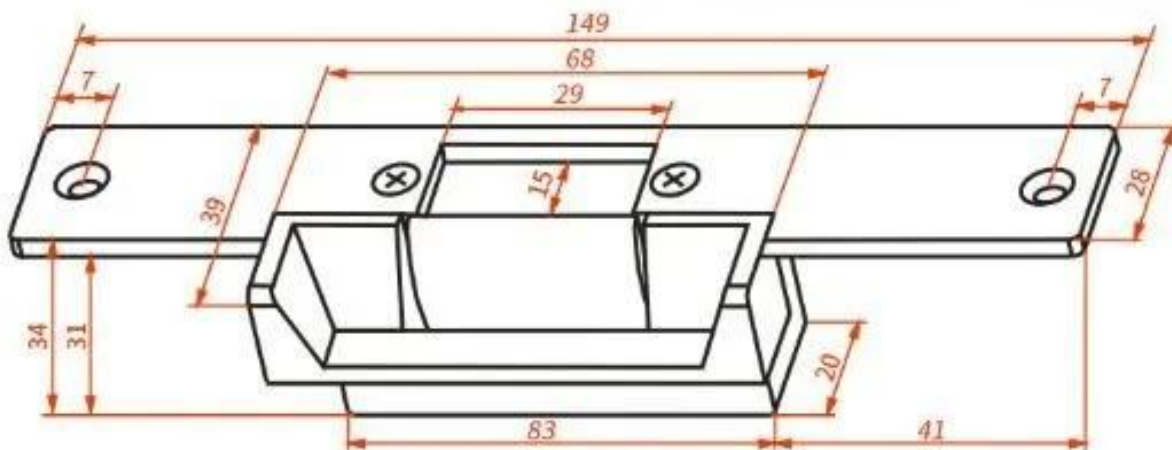
Rated Operating Voltage: DC 12V
Current: 240mA(Fail-secure) /
120mA(Fail-safe)

05 High-quality Aluminum Case

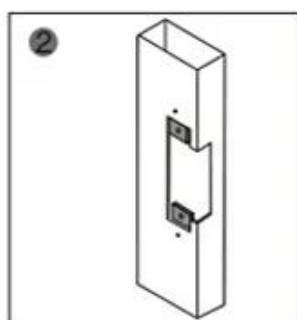
Made of high-quality aluminum for high hardness,
corrosion resistance & anti-deformation.



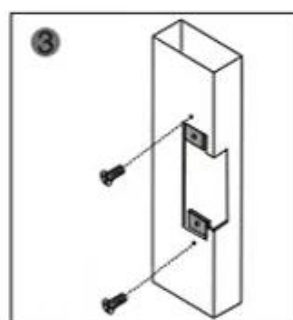
Instalation Diagram



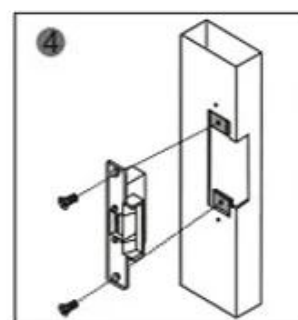
1 Cutting according to the size of the electric lock



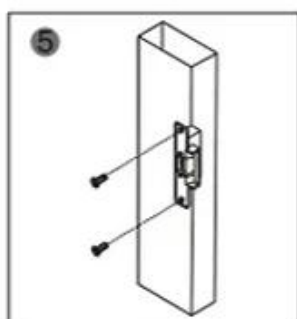
2 Insert extension plate



3 Fix extension plate



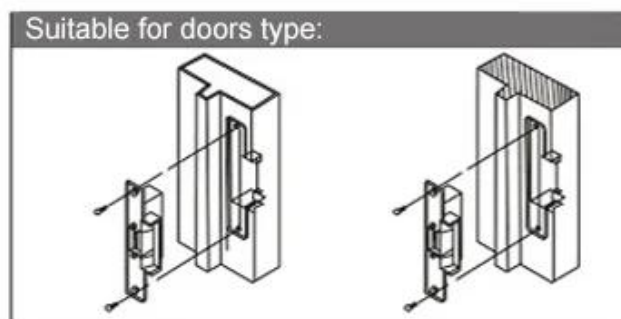
4 After installed, power on and test it



5 Fix strike lock



6 Finish



Metal door frame

Wooden door frame

Packing & Delivery

Shipping Way

We have strong cooperation with DHL, FEDEX, TNT, UPS, EMS, Forwarder by SEA and By AIR. You also can choose your own shipping forwarder.

Packaging

Bolt Lock packaging: 1 unit per box, 60 pcs per carton,



You may need





ACM-Y130

Standard Type electronic Stripe
(NC/NO) For Wooden Door, Metal
Door,PVC Door

ACM-Y131

Stainless steel electronic Stripe
(NC/NO) For Wooden Door, Metal
Door,PVC Door

ACM-Y132

280kg(600lbs) Single Door magnetic
Lock Suitable For: Wooden Door, Glass
Door, Metal Door, Fire Proof Door.





ACM-Y280

Surface mounted magnetic
lock(280kg/600lbs)

ACM-Y100S

ELECTRIC DROP BOLT LOCK
Time-delay &NO/NC Power to unlock

ACM-Y066

Intelligent Smart Lock (motor lock)
Lock size: 130x98x41mm Working

Our Service

- 1, Any inquires will be replied within 24 hours
- 2, Professional manufacturer and supplier, Welcome to visit our website and our factory
- 3, OEM/ODM Available
- 4, High quality, fashin desing, reasonable & competitive price, fast lead time
- 5, After-sale Service :
 - 1), All products will have been strictly quality checked in house before packing
 - 2), All products will be well packed before shipping
 - 3), All our products have 2-3 year warranty if the damage is not caused by human
- 6, Faster delivery : Around 1~ 5 days for sample order, 7~30 days for bulk order
- 7, Payment : You can pay for the order via : T/T, Western Union, Paypal.
- 8, Shipping: We have strong cooperation with DHL, FEDEX, TNT, UPS, EMS, Forwarder by SEA and By AIR, You also can choose your own shipping forwarder.

FAQ

Q: 1. How can I place an order?

A: Please list your requirement to us via email. Then we will send the offer to you at earliest time, after order confirmation, we will arrange production ASAP.

Q: 2. What about the payment and shipment?

A: T/T, Paypal, Western Union.

Clients can choose by sea, air or express (DHL, FedEx, TNT UPS etc.)

Q: 3. How can I get a sample to check your quality?

A: We could provide free sample to you, and the freight cost paid by you.

Q: 4. How long can I expect to get the samples?

A: It depends on the quantity. Normally 3-7 days for 5000 pcs and 7-15 days for 100,000 pcs

Q: 5. Can your products be customized?

A: Almost all of our products are customized, including the material, size, thickness and printing. OEM orders are highly welcome.

Q: 6. Are you a trading company or factory?

We are one of the biggest manufacturers of RFID cards/NFC tags/RFID keyfobs/RFID wristbands/RFID reader and access control products in China more than 20 years.