

433MHz Rolling Code Wireless Wiegand Access Control RFID Card Reader with 30m Wireless Distance 125KHz EM Wireless Card Reader

Wireless Reader

- > 433MHz Rolling Code technology
- > Card type: 125KHz EM card or 13.56MHz MF card
- > Programmable Wiegand output of the Receiver: 26 bits or 34 bits
- > Communication distance: 30m maximum
- > Ultra low power consumption
- > Waterproof, conforms to IP65

Product Parameter	Parameter Description
Model	ACM301
Product Name	Wireless Wiegand Reader

Wireless Keypad Reader

Card Type	125KHz EM card
Operating Voltage	3 units of AAA batteries
Idle Current	≤5uA
Working Current	≤35mA
Reading Distance	≤3cm
Communication Frequency	433MHz
Communication Distance	30m Maximum
Operating Temperature	-20°C~+60°C (-4°F~+140°F)
Operating Humidity	0%~86%
Index of Protection	IP65
Color	Black, White optional
Dimensions	L120 * W50 * H20 (mm)
Net Weight	88g

Receiver

Operating Voltage	12V DC
Working Current	≤15mA
Communication Frequency	433MHz
Wiegand Output Format	26 bits Or 34 bits (Default is 26 bits)
Operating Temperature	-20°C~+60°C (-4°F~+140°F)

Operating Humidity

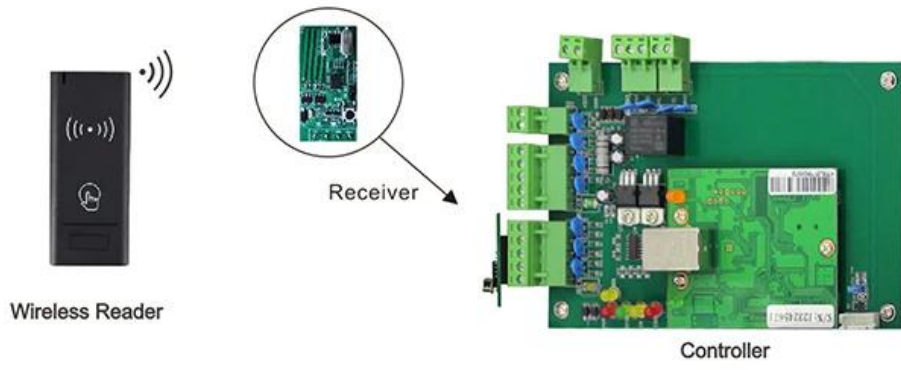
0%~86%

Dimensions

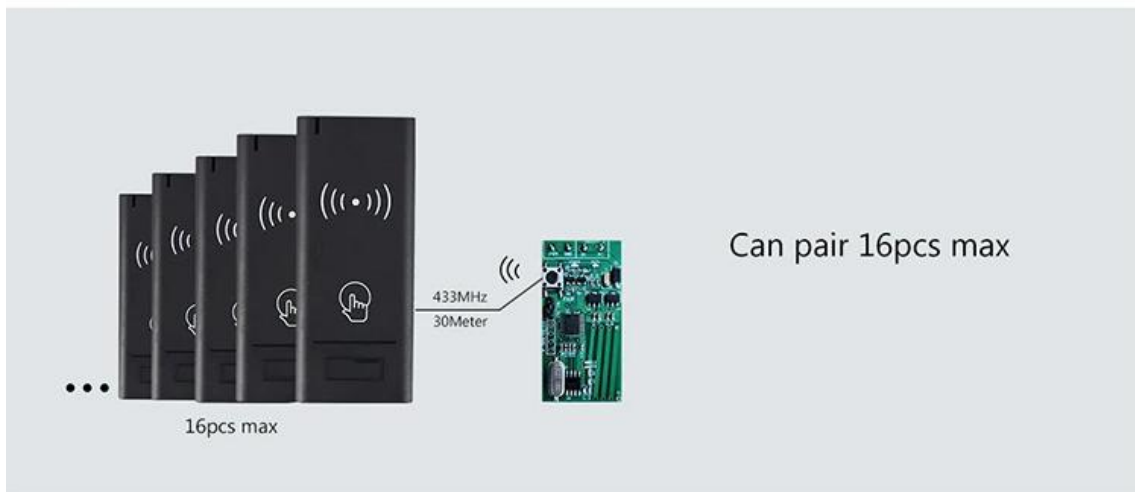
L25 * W50 (mm)

Net Weight

10g



Can work with any wiegand controller



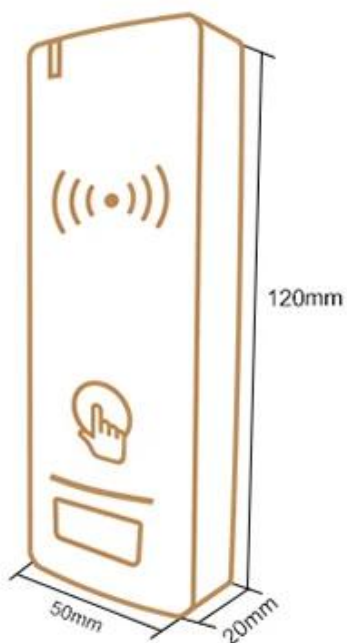
Battery powered, no need wires any more!



Fast installation within 2 minutes



Product Size



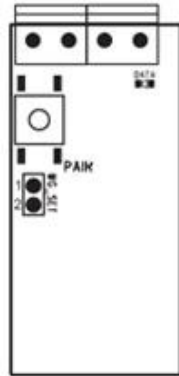
Gift Box Size



Carton Inventory



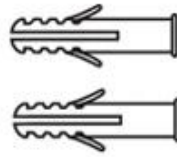
Wireless Reader



Receiver



Self Tapping Screws:
Φ 4*25mm



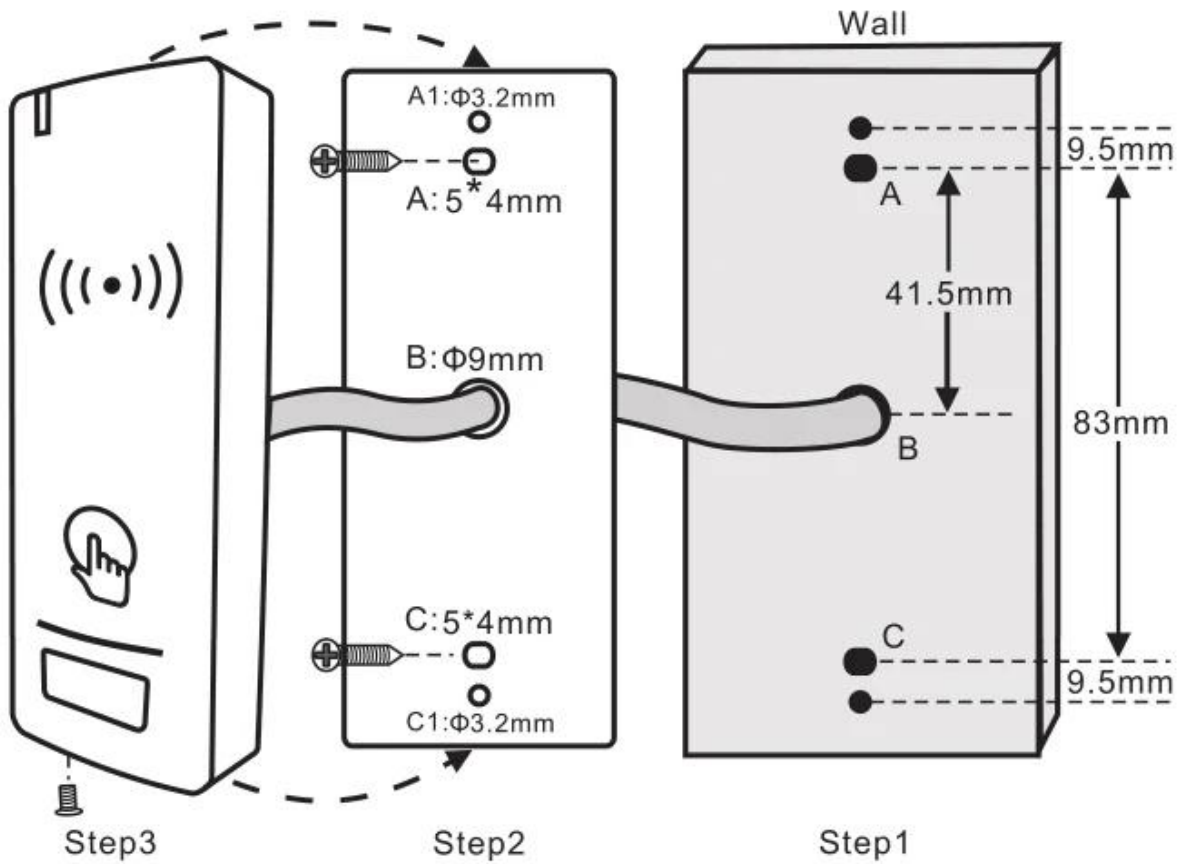
Wall Anchors



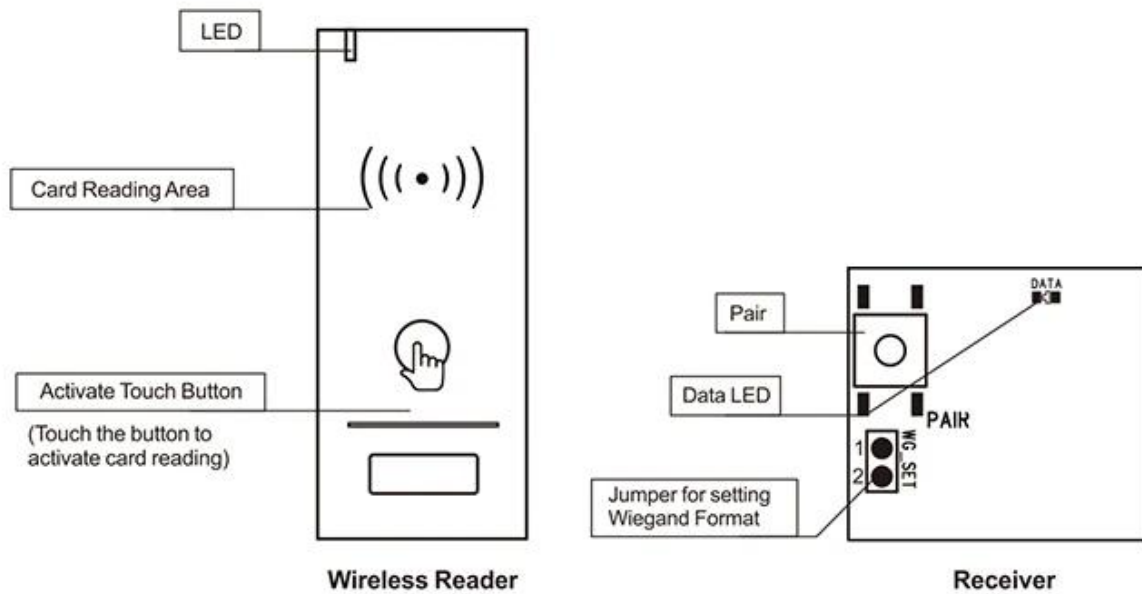
Screw Driver



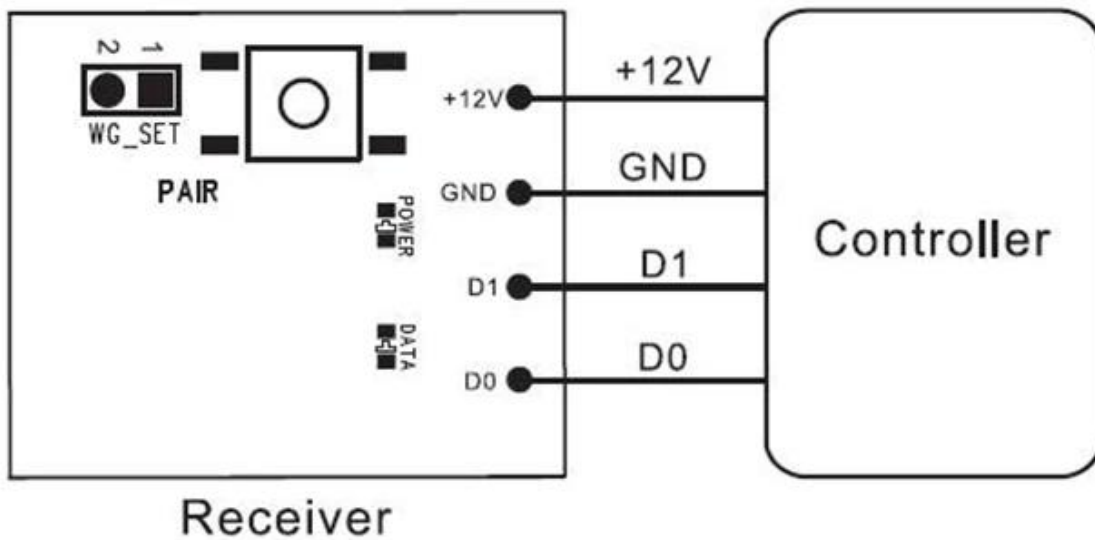
3M Sticker



Function Indicator



Connection (Receiver with Controller)



You May Like

We are Professional Access Control Manufacturer, We have Full System for Access Control Product as below:



ACM223

Touch Keypad RFID & Keypad Access Control , 125Khz EM 1000/4000 USer capacity

ACM209-NW

Keypad Metal RFID Single door AccessControl (Non-waterproof), 125Khz EM

ACM208

Waterproof RFID Single door Access Control and Reader



ACM210

Metal RFID Single door Access Control (Non-waterproof)

ACM225

Touch Keypad RFID Access Control, 125Khz EM, Can connect wiegand reader

ACM211B

Touch Keypad Metal case Waterproof
RFID Access Control, Can connect
wiegand reader

Our Service

- 1, Any inquires will be replied within 24 hours
- 2, Professional manufacturer and supplier, Welcome to visit our website and our factory
- 3, OEM/ODM Available
- 4, High quality, fashin desing, reasonable & competitive price, fast lead time
- 5, After-sale Service :
 - 1), All products will have been strictly quality checked in house before packing
 - 2), All products will be well packed before shipping
 - 3), All our products have 2-3 year warranty if the damage is not caused by human
- 6, Faster delivery : Around 1~ 5 days for sample order, 7~30 days for bulk order
- 7, Payment : You can pay for the order via : T/T, Western Union, Paypal, Ali trade assurance
- 8, Shipping: We have strong cooperation with DHL, FEDEX, TNT, UPS, EMS, Forwarder by SEA and By AIR, You also can choose your own shipping forwarder.

FAQ

Q: 1. How can I place an order?

A: Please list your requirement to us via mail. Then we will send the offer to you at earliest time,after order confirmation, we will arrange production ASAP.

Q: 2.What about the payment and shipment?

A: Trade Assurance and T/T ,Paypal, Western Union.
Clients can choose by sea, air or express(DHL, FedEx, TNT UPS etc.)

Q: 3. How can i get a sample to check your quality?

A:We could provide free sample to you, and the freight cost payed by you.

Q:4. How long can I expect to get the samples?

A: It depends on the quantity. Normally 3-7 days for 5000pcs and 7-15 days for 100,000pcs

Q:5. Can your products be customized?

A: Almost all of your products are customized ,including the materia, size, thickness and printing.
OEM orders are highly welcome.

Q:6.Are you a trading company or factory?

We are the one of the biggest manufacturer of RFID cards/NFC tags/RFID keybod /RFID wristband□rfid reader and access control products in China more than 20 years.