



## **Electric Bolt Lock With Cylinder Fail Safe Electric Drop Bolt Lock 5 00U LED**

Y-500U is a fail safe electric bolt .with Door status Signal Output ,suitable for glass door, wooden door, metal door . We supply integrity equipment to collocate with fully frame less glass door, swing-in door and so on. low temperature design.

P  
a  
P  
a  
m  
d  
t  
e  
t  
D  
a  
s  
a  
m  
è  
p  
è  
r  
o  
n

H  
P  
S  
H  
e  
1  
8  
5  
L  
H  
N  
P  
W  
X  
E  
H  
(  
m  
m  
)  
9  
L  
x  
2  
S  
W  
x  
S  
H  
(  
m  
m  
)  
1  
V  
O  
D  
C  
A  
S  
4  
V

S  
t  
a  
r  
Ø  
C  
m  
A  
r  
e  
n  
t  
S  
t  
a  
n  
d  
b  
Ø  
m  
A  
r  
r  
e  
n  
t

W  
o  
o  
d  
d  
e  
n  
D  
o  
o  
r  
,  
G  
l  
a  
s  
s  
D  
o  
o  
r  
b  
r  
a  
n  
d  
M  
o  
d  
e  
l  
D  
o  
o  
r  
,  
G  
l  
a  
s  
s  
D  
o  
o  
r

1 2 3 4 5 6 7 8 9 10 11 12 13 14 15 16 17 18 19 20 21 22 23 24 25 26 27 28 29 30 31 32 33 34 35 36 37 38 39 40 41 42 43 44 45 46 47 48 49 50 51 52 53 54 55 56 57 58 59 60 61 62 63 64 65 66 67 68 69 70 71 72 73 74 75 76 77 78 79 80 81 82 83 84 85 86 87 88 89 90 91 92 93 94 95 96 97 98 99 100

~  
0  
8  
e  
n  
a  
h  
i  
n  
g  
H  
d  
m  
h  
s  
i  
h  
9  
)  
S  
e  
e  
c  
e  
a  
t  
0  
e  
y  
g  
h  
e  
a  
F  
a  
H  
e  
r  
e  
b  
r  
o  
u  
g  
h  
A  
c  
c  
e  
u  
m  
m  
a  
t  
t  
e  
n  
e  
u  
r  
r  
i  
a  
l

## Product Advanatge

1. Low Temperature, safe & Durable.
  2. Low Power, Environmental Protection.
  3. Special photoelectricity control,three steps current application.
  4. Long Life with 500000 cycles.
  5. MOV Provides Reverse Current Protection.
  6. Superior Strength Aluminium Alloy,Solid Stainless Steel Bolt.
  7. Double protection for loading current.
  8. Photoelectricity Control,Low Temperature,
- A:The Low Current is Changed immediately;  
 B:When door frame doesn` t coincide with doorleaf ,door leaf against the bolt,then the electricbolt will start the low-power function to bring low temperature.  
 C:The Photoelectricity Control Technology, prevent the machanical defect.

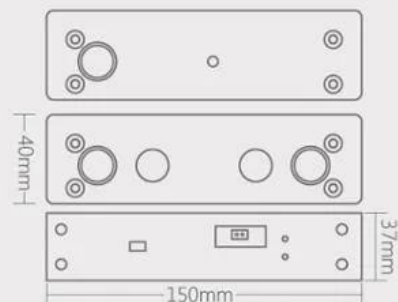
Detailed Images , OEM/ODM available



### UW-500U-LED

**Feature:** Fail Safe  
**Face Plate:** 185Lx25.7Wx37H(mm)  
**Bolt:** 16(length)x12.7(diameter)(mm)  
**Voltage:** DC12V  
**Start Current:** 960mA

**Standby Current:** 180mA  
**Solid Bolt :** polishing housing, 1000Kg Holding Force  
**Suitable For:** Electric Bolt For Narrow Door  
**Signal Output:** Door status Output,NO/COM  
**Surface Temp:** Low Temperature  
**Induction Distance:** 8mm  
**Special Designed:** Tested to 500000 operations  
**Plate material:** Stainless Steel  
**Weight:** 1.2kg



[Product show with different direction](#)



Quality Warranty

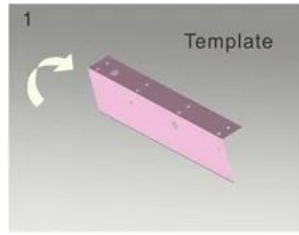


- Warranty Service will be honored if the damage is not caused by human, ACM Goldbridge provides 2 years warranty for relative products.
- On the contrary, ACM Goldbridge will charge extra if repair.
- More information, please browse our service center.

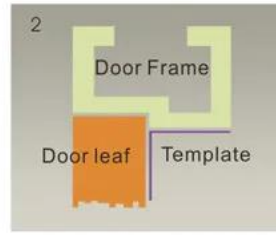
## Instalation Diagram

# STANDARD INSTALLATION STEPS

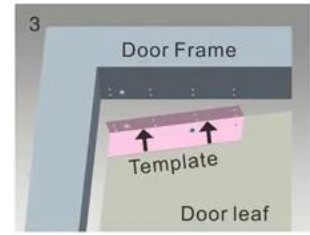
Professional guidance, Rest assured



1 Fold the plate to 90° .



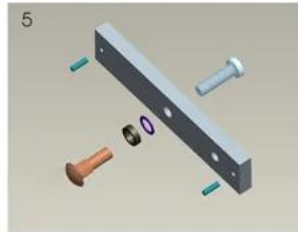
2 Close the door first, then place the upper side of template on door frame, while adjust the left side next to the door leaf.



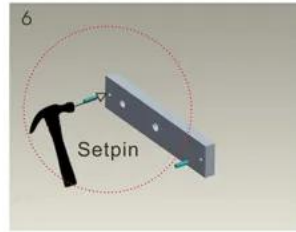
3 Mark screw positions of armature plate and magnetic lock on door leaf and door frame respectively.



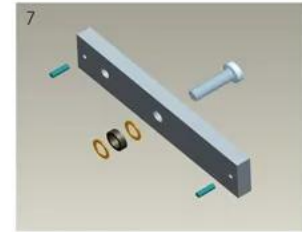
4 Drill holes based on the marked positions.



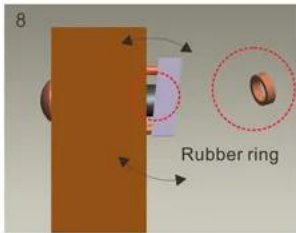
5 Make a combination based on the picture.



6 Strike the pin into the armature plate slightly (to avoid movement).



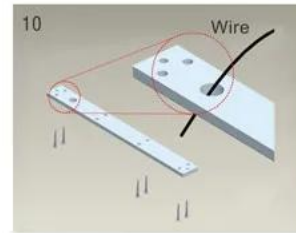
7 Make a combination based on the picture (add washer accordingly). The rubber ring must be added.



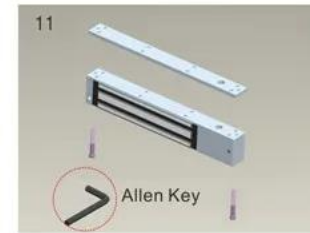
8 Place the rubber ring between armature plate and door leaf.



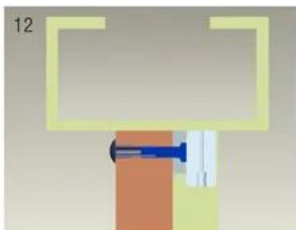
9 Use Allen key to remove the mounting plate from lock body.



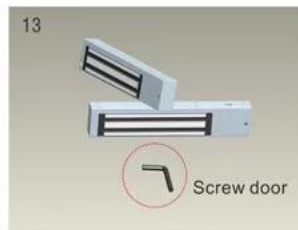
10 Fix the mounting plate on the door frame according to the holes drilled earlier.



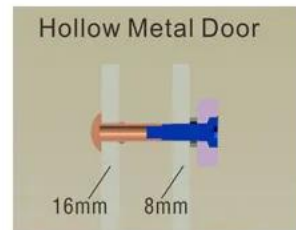
11 Use Allen key to screw the lock body on the mounting plate.



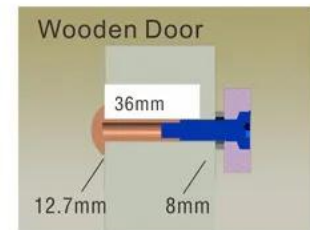
12 Close the door to test holding force. The angle between armature plate and magnetic lock can be adjusted by adding or reducing washers.



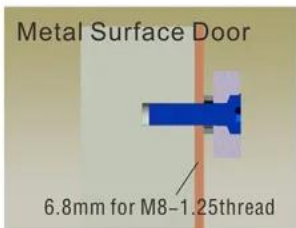
13 After all the appropriate procedures, the holding force can be maximized. Finally, fix the tamper screw.



Hollow Metal Door  
Drill a hole  
Inside: Diameter is 8mm  
Outside: Diameter is 16mm



Wooden Door  
Drill a hole  
Inside: Diameter is 8mm  
Outside: Diameter is 12.7mm



Metal Surface Door  
6.8mm for M8-1.25thread  
Inside: Drill a hole diameter is 8mm folding the plastic straight pin

## Notice:

Thickness of Door Leaf:

350LBS: 44mm

600LBS: 50mm

800LBS: 48mm

1200LBS: 46mm

## Packing & Delivery

### Shipping Way

We have strong cooperation with DHL, FEDEX, TNT, UPS, EMS, Forwarder by SEA and By AIR  
You also can choose your own shipping forwarder.

### Packaging

Lock packaging: 1 unit per box, 20pcs per carton,  
Carton size : 52\*29\*12cm , Gross Weight :13.6kg. 50 cartons per pallet



You may need



### **ACM-Y100S 2PIN**

ELECTRIC DROP BOLT LOCK  
Standby 100MA / working  
900MA Power to unlock, 2PIN

### **ACM-Y100S 5PIN**

ELECTRIC DROP BOLT LOCK  
Low temperature time-delay, feedback  
signal Power to unlock, 5PIN

### **ACM-Y500A**

Fail Safe Sturdiness Electronic

BoltW/Narrow DoorLock Size:  
205x30x38mm



### **ACM-Y280**

Surface mounted magnetic  
lock(280kg/600lbs)

### **ACM-Y131**

Stainless steel electronic Stripe  
(NC/NO) For Wooden Door, Metal  
Door,PVC Door

## ACM-Y066

Intelligent Smart Lock (motor lock)

Lock size: 130x98x41mm Working

### Our Service

- 1, Any inquires will be replied within 24 hours
- 2, Professional manufacturer and supplier, Welcome to visit our website and our factory
- 3, OEM/ODM Available
- 4, High quality, fashin desing, reasonable & competitive price, fast lead time
- 5, After-sale Service :
  - 1), All products will have been strictly quality checked in house before packing
  - 2), All products will be well packed before shipping
  - 3), All our products have 2-3 year warranty if the damage is not caused by human
- 6, Faster delivery : Around 1~ 5 days for sample order, 7~30 days for bulk order
- 7, Payment : You can pay for the order via : T/T, Western Union, Paypal.
- 8, Shipping: We have strong cooperation with DHL, FEDEX, TNT, UPS, EMS, Forwarder by SEA and By AIR, You also can choose your own shipping forwarder.

### FAQ

#### **Q: 1. How can I place an order?**

A: Please list your requirement to us via email. Then we will send the offer to you at earliest time,after order confirmation, we will arrange production ASAP.

#### **Q: 2.What about the payment and shipment?**

A: Trade Assurance and T/T ,Paypal, Western Union.  
Clients can choose by sea, air or express(DHL, FedEx, TNT UPS etc.)

#### **Q: 3. How can i get a sample to check your quality?**

A:We could provide free sample to you, and the freight cost payed by you.

#### **Q:4. How long can I expect to get the samples?**

A: It depends on the quantity. Normally 3-7 days for 5000pcs and 7-15 days for 100,000pcs

#### **Q:5. Can your products be customized?**

A: Almost all of your products are customized ,including the materia, size, thickness and printing. OEM orders are highly welcome.

#### **Q:6.Are you a trading company or factory?**

We are the one of the biggest manufacturer of RFID cards/NFC tags/RFID keybod /RFID wristband[]rfid reader and access control products in China more than 20 years.