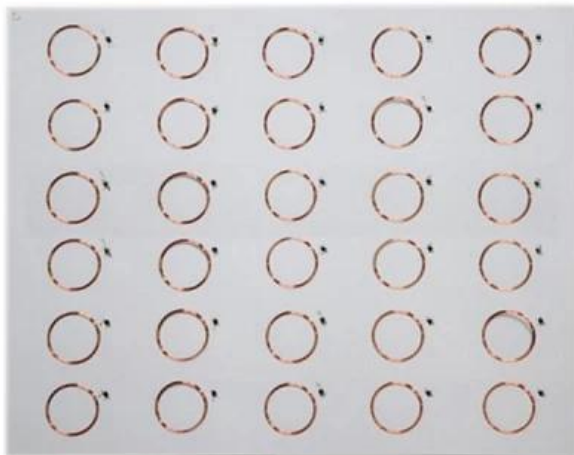


## Product Description

RFID Inlay sheet for card , also named rfid card prelam, contactless card inlay, it is the core part of RFID card.  
We produce this plastic card inlay with three technologies:

1. Ultrasonic technology, features best working performance
2. Pre-winding technology, features low cost.
3. Flip-chip technology, features flat surface, and very thinner thickness







2  
\*  
5  
,  
4  
\*  
5  
,  
5  
\*  
5  
,  
4  
\*  
6  
,  
4  
\*  
7  
,  
4  
\*  
8  
,  
4  
\*  
1  
,  
3  
L  
a  
6  
y  
3  
u  
t  
7  
,  
3  
\*  
8  
,  
6  
\*  
7  
,  
6  
\*  
8  
,  
6  
\*  
1  
4  
o  
r  
c  
u  
s  
t  
o  
m  
i  
z

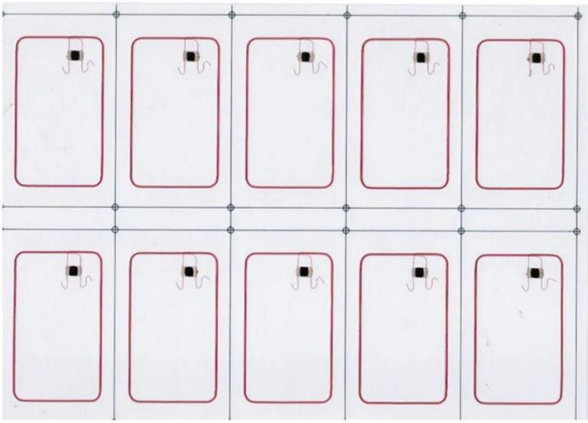


L  
F  
:  
P  
r  
e  
-  
w  
i  
n  
d  
i  
n  
g  
C  
o  
p  
p  
e  
r  
C  
o  
l  
l  
i  
,  
A  
L  
E  
t  
c  
h  
i  
n  
g  
H  
F  
:  
A  
L  
E  
t  
c  
h  
i  
n  
g  
,  
R  
n  
t  
e  
e  
w  
n  
a  
n  
d  
i  
n  
g  
C  
o  
p  
p  
e  
r  
C  
o  
l  
l  
,  
U  
l  
t  
r  
a  
s  
o  
n  
i  
c  
E  
m  
b  
e  
d  
i  
n  
g  
U  
H  
F  
:  
A  
L  
E  
t  
c  
h  
i  
n  
g

W  
o  
r  
k  
s  
h  
e  
e  
t  
p  
r  
e  
s  
e  
n  
t  
a  
t  
i  
o  
n  
a  
l  
S  
t  
o  
r  
y  
a  
n  
d  
C  
h  
a  
r  
a  
c  
t  
e  
r  
i  
z  
a  
t  
i  
o  
n

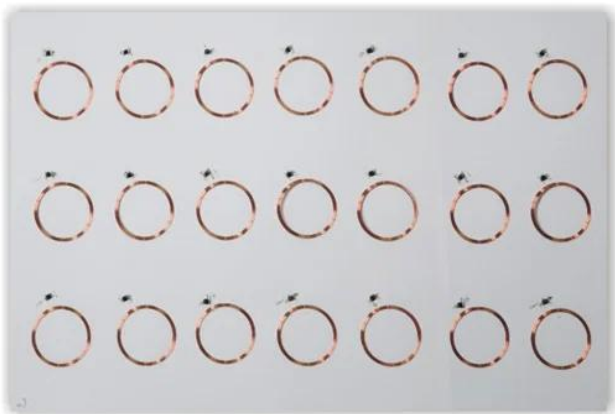
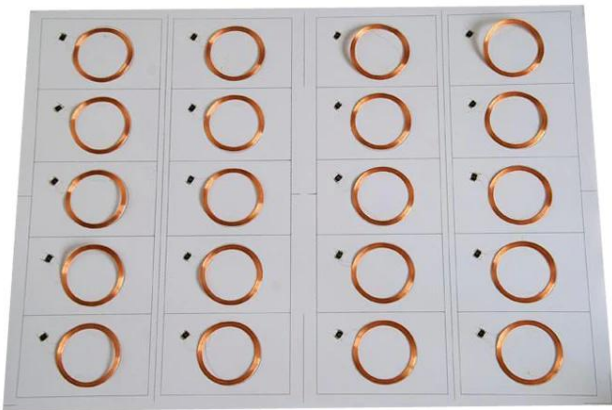
Detailed Images





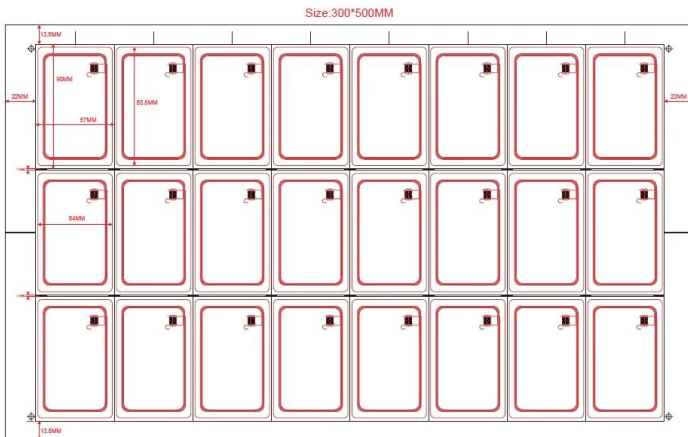
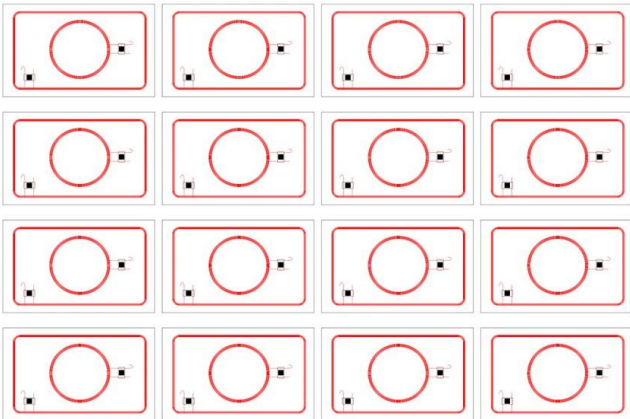
2x5 layout

5x5 layout



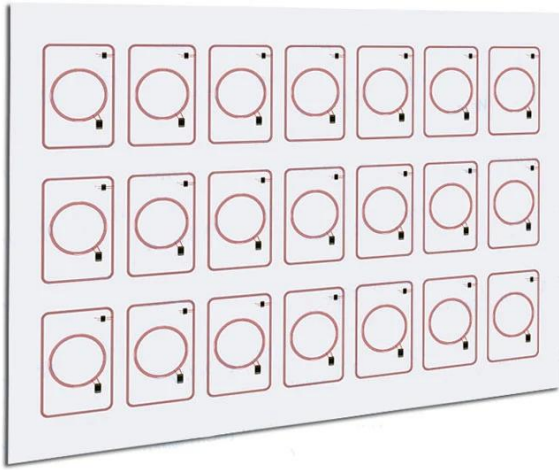
3x7 layout

**4x4 layout  
(dual frequency)**



**3x8 layout**

3x7 layout  
(dual frequency)



## Packing & Delivery

Every order we will check the quality firstly to ensure our customer get the best product.  
Our staff will pack it carefully to avoid the damage of transportation.  
We will ship every goods out as soon as possible.

## THE PACKAGING PROCESS



Windinig prelam Inlay

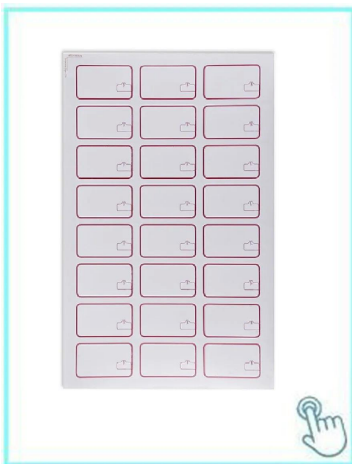
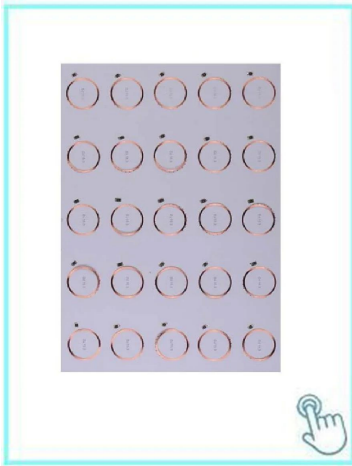


Carton packaging



Carton packaging

Your May Need



**ACM-INLAY-EM-TK4100**

125khz TK4100 chip inlay for card production

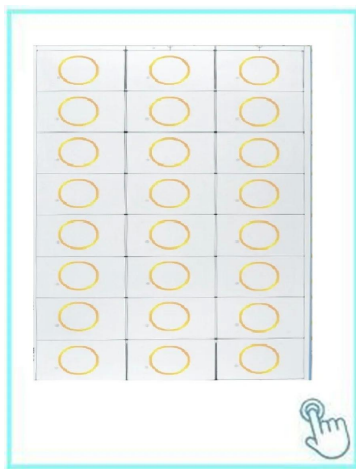
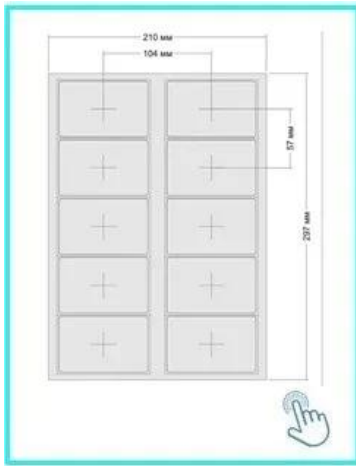
**ACM-INLAY-MF 1K-F08 chip**

13.56mhz F08 chip inlay for card production

**ACM-INLAY-MF 1K-S50  
Original**

MF 1k S50 original chip inlay for card

production



### **ACM -inlay**

MF 4K S70 original chip card inlay for card production

### **ACM-INLAY-T5577**

T5577 chip card inlay for card production

### **ACM-INLAY-UHF-6C**

UHF chip card inlay for card production

## Our Service

- 1, Any inquiries will be replied within 24 hours
- 2, Professional manufacturer and supplier, Welcome to visit our website and our factory
- 3, OEM/ODM Available
- 4, High quality, fashion design, reasonable & competitive price, fast leadtime
- 5, After-sale Service :
  - 1) All products will have been strictly quality checked in house before packing
  - 2) All products will be well packed before shipping
  - 3) All our products have 2-3 year warranty if the damage is not caused by human
- 6, Faster delivery : Around 1~ 5 days for sample order, 7~30 days for bulk order
- 7, Payment : You can pay for the order via : T/T, Western Union, Paypal, Ali trade assurance
- 8, Shipping: We have strong cooperation with DHL, FEDEX, TNT, UPS, EMS, Forwarder by SEA and By AIR, You also can choose your own shipping forwarder.

### Quality warranty:

Warranty service will be honored if the damage is not caused by human, ACM Goldbridge provides 2 years warranty for relative products. On the contrary, ACM Goldbridge will charge extra if repair. More information, please browse our service center.

## FAQ

### Q: 1. How can I place an order?

A: Please list your requirements to us via inquiry. Then we will send the offer to you at the earliest time, after order confirmation, we will arrange production ASAP.

### Q: 2. What about the payment and shipment?

A: Trade Assurance and T/T, Paypal, Western Union.

Clients can choose by sea, air or express (DHL, FedEx, TNT, UPS etc.)

### Q: 3. How can I get a sample to check your quality?

A: We could provide free samples to you, and the freight cost is paid by you.

### Q: 4. How long can I expect to get the samples?

A: It depends on the quantity. Normally 3-7 days for 5000 pcs and 7-15 days for 100,000 pcs

### Q: 5. Can your products be customized?

A: Almost all of our products are customized, including the material, size, thickness and printing. OEM orders are highly welcome.

### Q: 6. Are you a trading company or factory?

**We are the one of the biggest manufacturer of RFID cards/NFCtags/RFID keybod /RFID wristband in China more than20 years.**