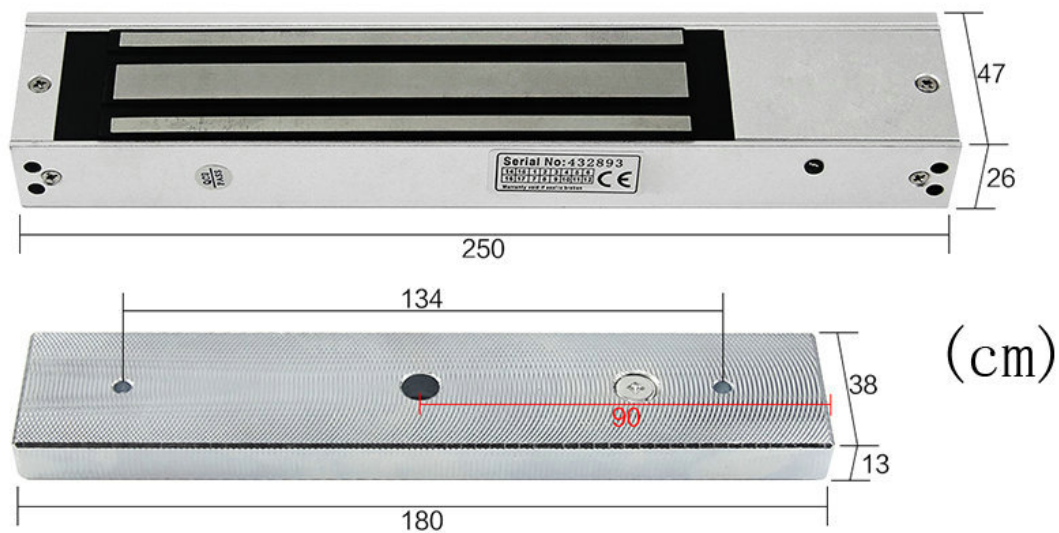


Product Description

Feature	Fail-safe: Power to lock
Lock Size	250 L X 27 H X 48 D (mm)
Armature Size	180 L X 38 H X 11 D (mm)
Holding Force	280KG(600LBS)
Feedback	Door Status Output, NO/NC/COM
Voltage	12/24VDC
Current Draw	12V/500mA, 24V/250mA
Material	Finishes for shell: Anodized aluminum
	Finishes for magnet: Zinc
	Finishes for Armature: Zinc
Certification	CE, ROHS, CMA
Advantage	Low power consumption, high efficiency
Application	Metal doors, wooden doors, fireproof doors, glass door
Weight	Approx.: 2kg



Main Features

1. Door status, lock status monitoring output
2. Dual voltage selectable (12VDC or 24VDC)
3. Low current consumption
4. Reliable holding force
5. High strength material, anodized aluminum housing
6. Anti-residual magnetism designed
7. Durable and silence operation
8. CE Certificate by European Union

Details

SECURITY

ANTI-RESIDUAL MAGNETISM DESIGNED



Can't fix the screw when the door close.

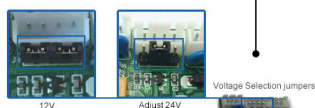
FEEDBACK

SIGNAL DETECTION FEEDBACK FUNCTION



VOLTAGE

DUAL VOLTAGE 12 OR 24 VDC TO SELECTABLE



TIME DELAY

WITH AJUSTABLE TIMER:0-15s



Turn right to adding delay time, turn left to reducing delay time

WATERPROOF

IP68 WATERPROOF, EPOXY SEALED DESIGNED FOR OUTDOOR USE



2 Wires PCB



5 Wires PCB with feedback function



12V/24V 5 Wires PCB with feedback function



6 Wires PCB with timer



7 Wires PCB with timer and feedback



9 Wires PCB with timer and feedback



Waterproof lock PCB

Parameter

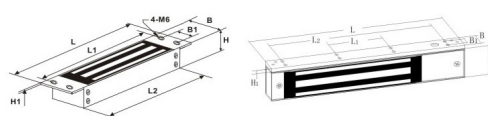
Name	280KG Electromagnetic lock
Voltage	12VDC or 12/24VDC(optional)
Current	380mA
Holding Force	280KG or 600LB
Indicate	LED
Material	Anodized aluminum
Waterproof	IP68(optional)
Feedback	Door Status Output, NO/NC/COM(optional)
Time delay	0-155(optional)
Lock Size(mm)	250 LX 27 H X 48 D
Armature Size	180 LX 38 H X 11 D
Application	Wooden doors, fireproof doors, glass door etc
Weight	2KG



Remark: Please don't fix the screw of armature plate tightly. Let the rubber ring maintain proper elasticity.

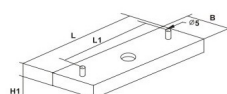
Size

Specification(Unit:mm)



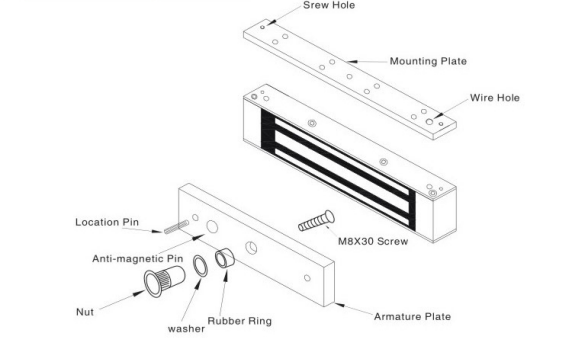
	ES180A	ES230A	ES280A	ES380A	ES180G	ES230G	ES280G	ES300G	ES380G	ES500G
L	190	258	252	265	170	250	240	240	250	266
L1	/	238	232	244	42	70	70	70	/	/
L2	/	202	197	209	126	210	200	200	220	/
B	32	42	50	56	20.5	25.4	27.5	27.5	36	42
B1	/	25	35	35	9	12.5	15	15	20	18
H	21	27	29	35	34	42	50.5	50.5	56	67
H1	/	5	4	5	5	5	6	6	6	6

Iron plate size (unit: mm)

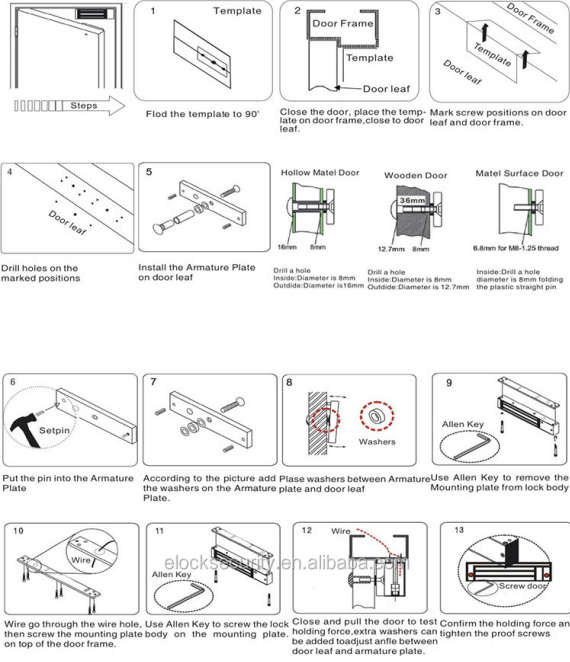


ITEM	L	L1	B	H
ES180	130	120	33	11
ES230	180	165	38	11
ES280	158	134	43	11
ES300	158	134	43	11
ES380	168	134	48	11.5
ES500	185	165	61	16

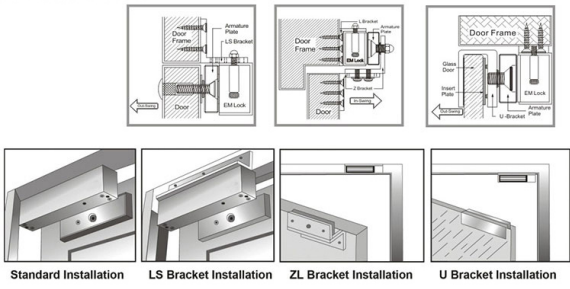
2 Lock Diagram



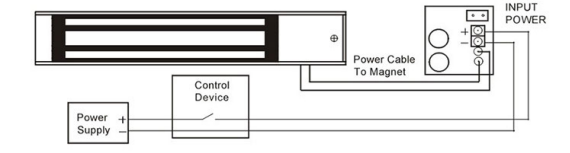
Installation



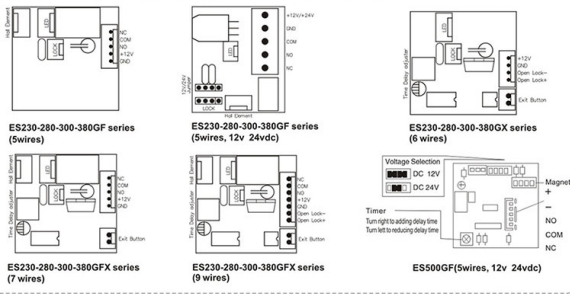
Bracket Installation



3 Wiring Diagram



PCB Diagram







280
kg



Packing & Delivery

Shipping Way

We have strong cooperation with DHL, FEDEX, TNT, UPS, EMS, Forwarder by SEA and By AIR
You also can choose your own shipping forwarder.

Packaging

Magnetic Lock packaging: 1unit per box, 12pcs per carton,
Carton size : 54.3*13.5*19.3cm , Gross Weight :25kg. 50 cartons per pallet



[Click here](#) to order and have your FREE SAMPLE in 3 days!!!

We are professional comprehensive security access control products supplier with 20 years experience, we make sure to offer the best solution of access control system solution! So, send your inquiry details in the below, click "Send" now!

We are looking forward to forming successful business relationships with new clients around the world in the future.

ACM-Y280-L

L Bracket for 280kg/350kg Magnetic Lock

ACM-Y280Z

Z Bracket for 280kg Magnetic Lock

ACM-Y280-ZL

ZL Bracket for 280Kg/350Kg Magnetic Lock

Our Service

- 1, Any inquires will be replied within 24 hours
- 2, Professional manufacturer and supplier, Welcome to visit our website and our factory
- 3, OEM/ODM Available
- 4, High quality, fashin desing, reasonable & competitive price, fast lead time
- 5, After-sale Service :
 - 1), All products will have been strictly quality checked in house before packing
 - 2), All products will be well packed before shipping
 - 3), All our products have 2-3 year warranty if the damage is not caused by human
- 6, Faster delivery : Around 1~ 5 days for sample order, 7~30 days for bulk order
- 7, Payment : You can pay for the order via : T/T, Western Union, Paypal,
- 8, Shipping: We have strong cooperation with DHL, FEDEX, TNT, UPS, EMS, Forwarder by SEA and By AIR, You also can choose your own shipping forwarder.

20⁺ YEARS EXPERIENCE OEM & ODM

ACCESS CONTROL SYSTEMS ONE STOP SOLUTION PROVIDER

Goldbridge is Top 10 China Manufacture On Alibaba, Specializes In Provide Kinds Of RFID/NFC Cards, FID Tags, RFID Card Reader, UHF Reader, Access Control System, Electromagnetic Locks, etc Since 1999



Customized
Services



Quality
Assurance



Fast
Delivery



Best After-
Sales Service

ADVANTAGE



WHY CHOOSE US?

- 1 FAST DELIVERY** Faster delivery by air by express. (DHL, UPS or Fedex)
- 2 LONG HISTORY** 20 years experience in RFID & Access Control industry
- 3 OEM ACCEPTABLE** 20 years OEM&ODM experience for 1000 + VIP client from US and Europe
- 4 HIGH QUALITY** Design and manufacture high quality products with 30 R&D; engineers.



OUR FACTORY



Access Control and RFID Reader Production Line:

- Monthly production quantity is up to 50,000pcs, We are Provides OEM&ODM services including product research and development, LOGO printing, customized.etc



Door Lock Production Line

Electromagnetic lock & Smart Door Lock Production Line :

- Monthly production quantity is up to 100,000pcs,
- Our factory is built with modern manufacture environment, facilities, equipment and professional operation technicians.
- Goldbridge Provides OEM&ODM services including product research and development, LOGO printing and product box customized.



RFID Cards & Tags Production Line

RFID & NFC Cards & Tags Production Line :

- RFID Tag, Wristband, Keyfob: 11,000,000pcs (monthly output)
- Four Production Lines For Smart Card, PVC Card, Prelam Sheet: 20,000,000pcs (monthly output)
- Goldbridge Provides OEM&ODM services for LOGO printing, development, customized.

APPLICATION

Bus, supermarket, school, government, hospital, factory



CERTIFICATE



