

Products Description

Products Description

ADoor exit button for access control system, waterproof touch exit butto

Feature:

- No touch / Touch free Exit Sensor (Diffused Detection)
 - Optical / Infrared Technology
 - IP-55 Ingress Protection / SUS 304 Stainless steel Plate
 - User friendly (Healthy protection)
 - Free from contagious diseases spread
 - Detection range: 0.1 ~ 10 cm
 - Normally open/Normally close/Common relay output
 - Twin led indicators for sensor standby or approached :
- (1) Sensor Standby: BLUE LED ON

Details Images

Details Images



Whatsapp: +86-13554918707

E-mail: sales@goldbridgesz.com

Website: www.goldbridgesz.com

Waterproof Exit Button

Stainless steel panel /IP66 waterproof





Stainless Steel Door Release Button

Waterproof IP67

PH: +86-13554918707
E: sales@goldbridgesz.com
W: www.goldbridgesz.com



ACM-K819-A
115X40mm

ACM-K819-B
86X50mm

ACM-K819-C
115X70mm

ACM-K819-D
86X86mm

Power Supply: 12V-24DC
Output Contact: NO/NC/COM

Panel Material: 1.8mm Thick Stainless Steel
Mechanical Life: 500,000 tests

Operating temp: -20°C ~ +55°C(14-131°F)
Suitable Humidity: 0-95% (relative humidity)







www.goldbridgesz.com



A K841-A (115x40mm) **B** K841-B (86x50mm)
C K841-C (115x70mm) **D** K841-D (86x86mm)

Touchless
Infrared Sensor Exit Button

Power Supply: 12V-24DC
Output Contact: NO/NC/COM
Panel Material: 1.8mm Thick Stainless Steel
Mechanical Life: 500,000 tests
Operating temp: -20°C ~ +55°C(14-131°F)
Suitable Humidity: 0-95% (relative humidity)

PH: +86-13554918707
E: sales@goldbridgesz.com

Product Paramenters

Model Number	K-E012
Product Name	NO Touch Exit Button Switch
Material	Stainless Steel
Product size	86*86mm
Power supply voltage	12VDC
Contact output	NO/NC/COM /LED
Maximum current	3A / 125-250VAC
Endurance test	100,000 times
Installation:	hollow door frame (concealed installation)
Packing parameters	100pcs/15kg/51*43*33cm/ctn

Products Detail



金属门禁开关

产品参数

PRODUCT PARAMETER

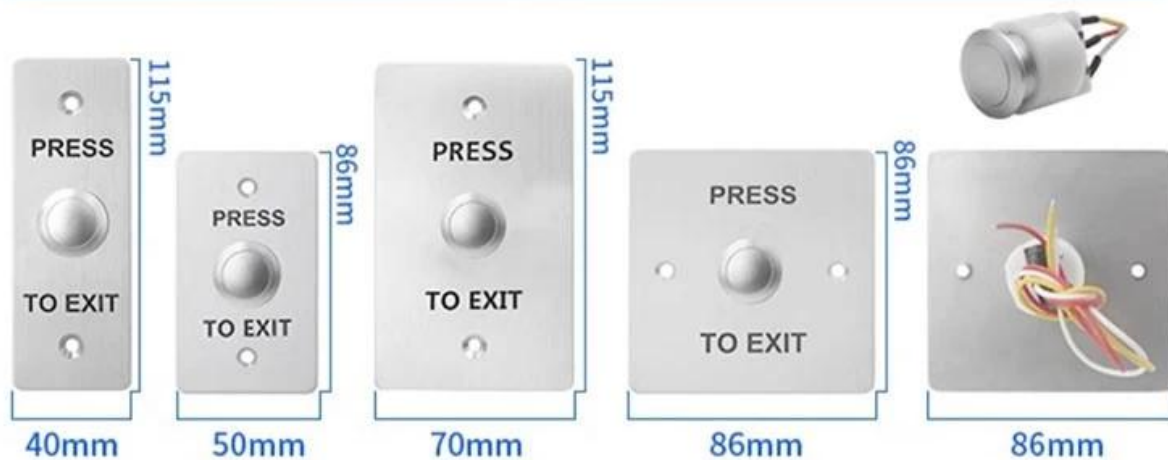
产品型号	S840	S850	S870	S886
面板尺寸	115*40(mm)	86*50(mm)	115*70(mm)	86*86(mm)

开关

接点输出	NO/COM
面板材质	304不锈钢
按键类型	自复位金属按钮
安装方式	暗装（嵌入式）
面板图案	支持LOGO、文字、图案定制



产品型号	S840D	S850D	S870D	S886D
面板尺寸	115*40(mm)	86*50(mm)	115*70(mm)	86*86(mm)
接点输出	NO/NC/COM			
面板材质	304不锈钢			
按键类型	自复位塑胶按钮			
安装方式	暗装（嵌入式）			
面板图案	支持LOGO、文字、图案定制			



常开常闭

常开常闭

产品型号	S840L	S850L	S870L	S886L
面板尺寸	115*40(mm)	86*50(mm)	115*70(mm)	86*86(mm)
接点输出	NO/NC/COM			
面板材质	304不锈钢			
按键类型	自复位金属带LED灯按钮			
安装方式	暗装（嵌入式）			
面板图案	支持LOGO、文字、图案定制			

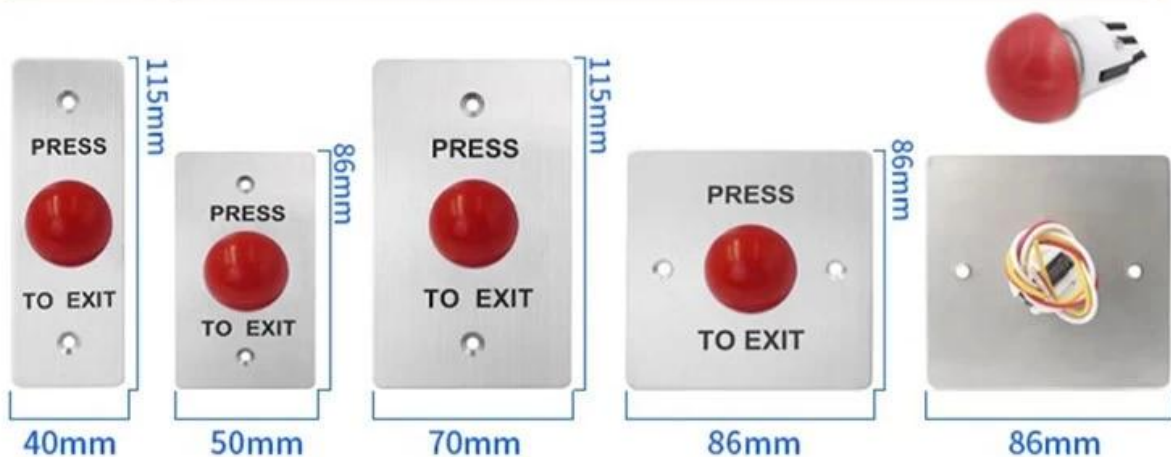


产品型号	S840M1G	S850M1G	S870M1G	S886M1G
面板尺寸	115*40(mm)	86*50(mm)	115*70(mm)	86*86(mm)
接点输出	NO/NC/COM			
面板材质	304不锈钢			
按键类型	自复位绿色蘑菇头金属按钮			
安装方式	暗装（嵌入式）			
面板图案	支持LOGO、文字、图案定制			



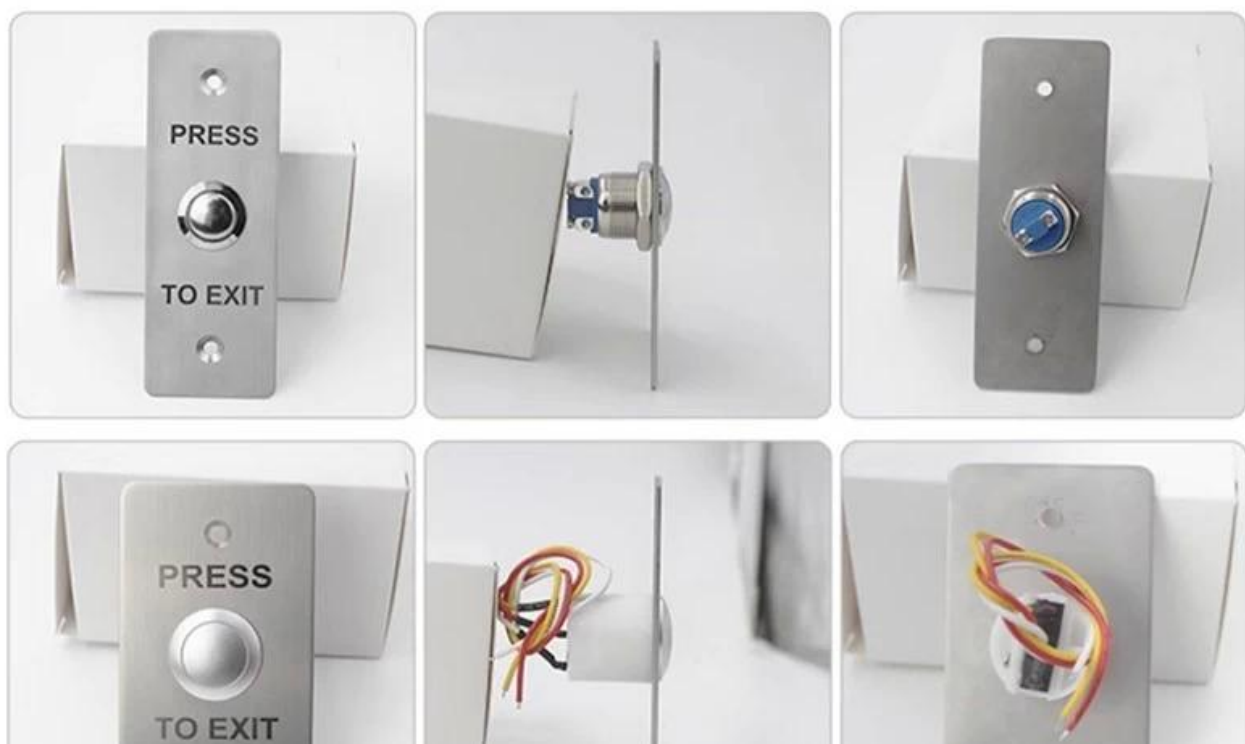
常开常闭

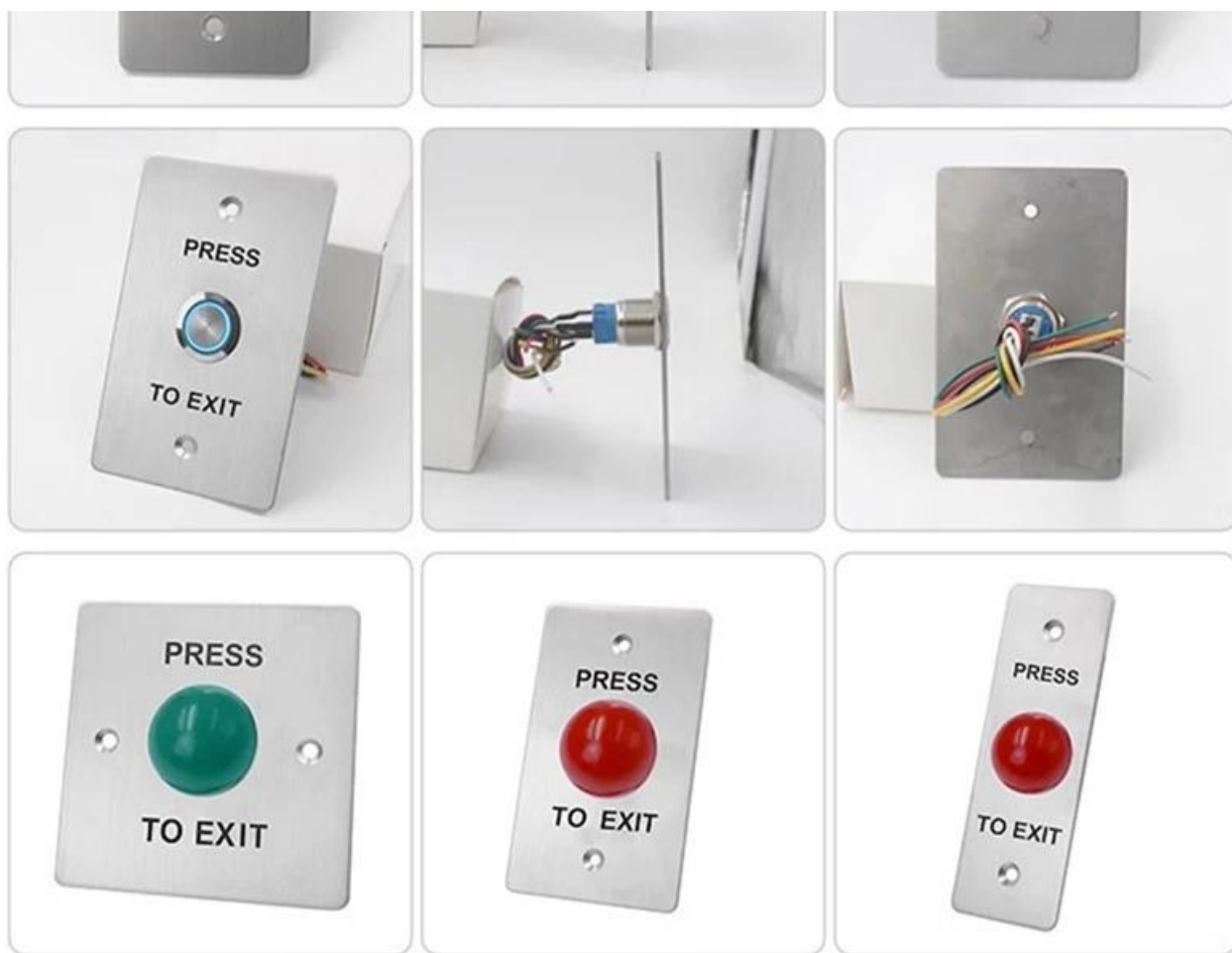
产品型号	S840M1R	S850M1R	S870M1R	S886M1R
面板尺寸	115*40(mm)	86*50(mm)	115*70(mm)	86*86(mm)
接点输出	NO/NC/COM			
面板材质	304不锈钢			
按键类型	自复位红色蘑菇头金属按钮			
安装方式	暗装（嵌入式）			
面板图案	支持LOGO、文字、图案定制			



产品实拍

PRODUCT PHOTO





适用场景

APPLICABLE SCENE



家庭



商场

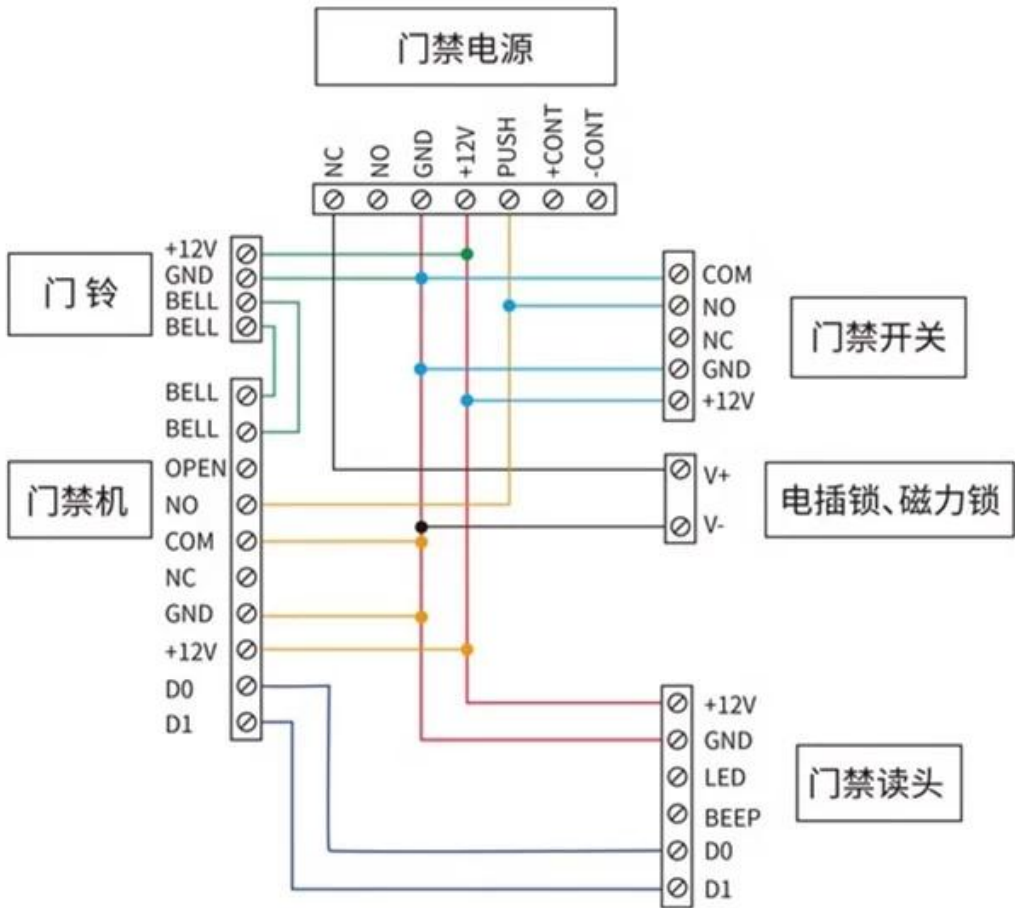


办公室



接线说明

PRODUCT PARAMETER



Recommend Products

Recommend Products

Locker Lock System

Hotel Door Lock System

Home Office Smart Lock System

Access Control System

Car Parking System

Related Products



EXIT BUTTON

Email: sales@goldbridgesz.com



TOUCH BUTTON

Email: sales@goldbridgesz.com



NO TOUCH EXIT BUTTON



PLASTIC BUTTON

Email: sales@goldbridgesz.com



EMERGENCY DOOR RELEASE

Email: sales@goldbridgesz.com



Company Information

20⁺ YEARS EXPERIENCE

OEM & ODM

ACCESS CONTROL SYSTEMS ONE STOP SOLUTION PROVIDER

Goldbridge is Top 10 China Manufacture On Alibaba,
Specializes In Provide Kinds Of RFID/NFC Cards, FID Tags, RFID Card Reader,
UHF Reader, Access Control System, Electromagnetic Locks, etc Since 1999



Customized
Services



Quality
Assurance



Fast
Delivery



Best After-
Sales Service

ADVANTAGE



WHY CHOOSE US?

- 1 FAST DELIVERY** Faster delivery by air by express. (DHL, UPS or Fedex)
- 2 LONG HISTORY** 20 years experience in RFID & Access Control industry
- 3 OEM ACCEPTABLE** 20 years OEM&ODM experience for 1000 + VIP client from US and Europe
- 4 HIGH QUALITY** Design and manufacture high quality products with 30 R&D engineers.

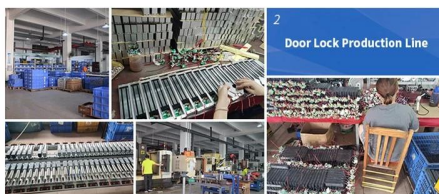


Supplier's Company

OUR FACTORY



- **Access Control and RFID Reader Production Line:**
- Monthly production quantity is up to 50,000pcs , We are Provides OEM&ODM services including product research and development, LOGO printing, customized.etc



- **Electromagnetic lock & Smart Door Lock Production Line :**
- Monthly production quantity is up to 100,000pcs ,
- Our factory is built with modern manufacture environment, facilities, equipment and professional operation technicians.
- Goldbridge Provides OEM&ODM services including product research and development, LOGO printing and product box customized.



- **RFID & NFC Cards & Tags Production Line :**
- RFID Tag, Wristband, Keyfob: 11,000,000pcs (monthly output)
- Four Production Lines For Smart Card, PVC Card, Prelam Sheet: 20,000,000pcs (monthly output)
- Goldbridge Provides OEM&ODM services for LOGO printing, development, customized.

APPLICATION

Bus, supermarket,school, government, hospital, factory



CERTIFICATE



Access Control CE Access Control RoHS EM Lock EMC Certificate EM Lock RoHS Certificate



RFID Card Reader CE RFID Card Reader RoHS UHF Reader CE Certificate UHF Reader ROHS

PRODUCT CATEGORY

RFID / NFC SMART CARD

Be customized according to you need

Fit for systems of transport, E-payment, Access Control, Event, Loyalty, ect.

[View More](#)



ACCESS CONTROL SYSTEM

Security for All: Network Access Control Board ,Standalone Access Controller, Biometric Access Control, T&A time attendance, Facial Access Control

[View More](#)



RFID & LONG RANGE UHF READER

20+ Years of professional Experience in production of rfid uhf hardware

- UHF desktop reader writer,
- UHF integrated reader,
- UHF R2000 fixed reader,

[View More](#)



ELECTRONMAGNETIC LOCK

Professional Electric Locks Manufacturer In China

Electromagnetic lock with OEM & ODM since 1999 60KG /110KG /180KG /280KG /350KG /500KG

[View More](#)



FAQ

Q1 How can I place an order?

A1 Click start to order or list your requirement to us by email. Then we will send the offer to you ASAP, after the order confirmed, we will arrange production ASAP.

Q2 What about the payment and shipment?

A3 T/T , Paypal, Western Union etc.
You can choose your agent or via our agent by sea, air or express (DHL,FedEx, TNT UPS etc.)

Q4 How can I get a sample to check your quality?

A4 We could provide the sample to you, pls check the sample cost and freight cost with us.

Q5 How long can I expect to get the goods?

A5 It depends on the quantity and shipping way. You can check with us before ordered.

Q6 Can your products be customized?

A6 Almost all of our products are customized , including the material, size, thickness and printing. OEM orders are highly welcome.

[Contact Us](#)



[BACK TO HOMEPAGE >](#)

