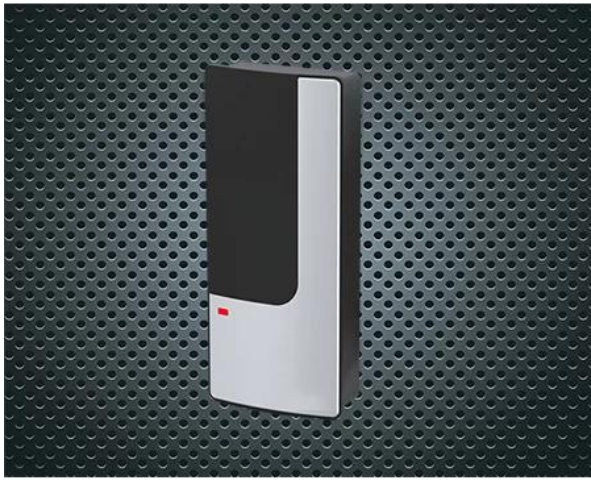
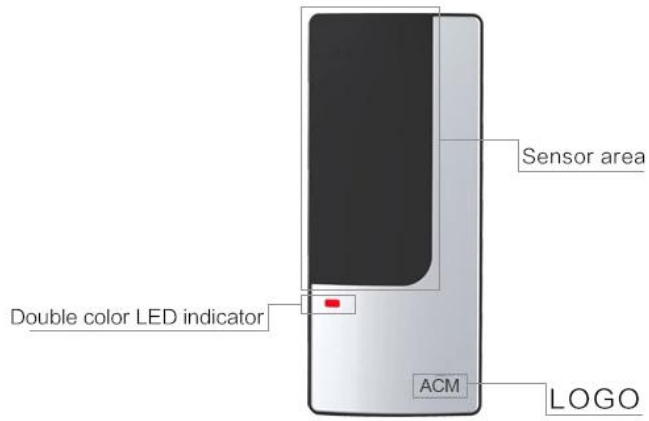


Features

- > Very low power consumption, standby current less than 30mA
- > WG 26 output
- > Fast Search speed: time between reading card and opening the door is less than 0.1S

Operating Voltage	9-12V DC
Card type	EM or Mifare
Reading Distance	3-6 cm
Quiescent Current	≤30mA
Operating Temperature	-45°C~60°C
Operating Humidity	10%- 90% RH
Waterproof	Conforms to IP68
Dimension	110*48*20 MM



Westem Style
Fashionable and
Beautiful

Waterproof Structure
Strong Adaptability

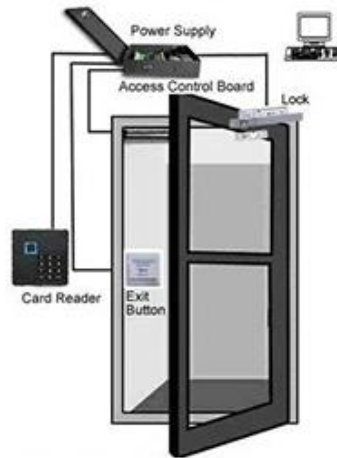


Long reading
distance



You May Need

Complete Door Access Control Solution Provider



RFID Card



RFID Key fob



RFID Wristband



RFID Reader



Long Distance
UHF Reader



Access Control
Reader



Biometric Controller



RFID Controller



Door EM Lock

WHY CHOOSE US?

- **Long History & High Reputation**

Founded in 1999. Great Creativity Group dedicates in R&D, producing and sale of RFID products and Plastic Card. We own 12,000 square meters factory, 3000 square meters office and 8 branches so far.

- **Advanced Equipments & Ultimate Production Ability**

2 Modern high standard production lines with monthly output 30,000,000pcs cards. Brand-new CTP machines and Germany Heidelberg offset printing machines. 10 sets of compounding machines.

- **Self R&D Customization**

Our company offering management application project, equipment application, scheme and personalized RFID end product.

- **Strict Quality Control**

Strict QC System from raw material to finished products. We have passed certified ISO9001, SGS, ROHS, EN-71, BV etc. We promise all products will be examined strictly and we ensure that the products we deliver to you with top quality.

ABOUT GOLDBRIDGE

As a one of leading manufacturer and exporter of RFID products in China, We have been in this field for 20 years already. We have rich production and exportation experience on RFID products. Our strength products are: rfid card, rfid Keyfob, rfid wristband, rfid tag and various rfid reader. We are also the access control solution provider.

[MORE >>](#)





ABOUT OUR FACTORY

Established in 1999, Shenzhen Goldbridge has witnessed the technological innovation from rfid card to rfid tag, the overall change of market products in the past 20 years, and registered "Shenzhen Goldbridge Industrial Co., Ltd." in 1999.

At present, Goldbridge has developed into a National High-Tech Enterprise, which is specialized in the integration of production, market and research. Starting from the PVC cards and RFID cards factory with only 66 workers, Goldbridge has accomplished the successful transition from traditional manufacturing industry to IOT technology enterprise (RFID technology development).



With the accumulation of dozens of software copyrights and utility new inventions and patents, Goldbridge has been rewarded as "National High-Tech Enterprise", "Shenzhen High-Tech Enterprise", and has become an integrated enterprise which focuses on research, production and market. Meanwhile, by adopting the "Military + School + Family" corporate culture concept, accompanied by the continuous innovation of business model and marketing model, plus the B2B, B2C platform and excellent sales team, Goldbridge sells its products all over the world.



Honers & Certificates



FAQ

Q Do you accept Trade Insurance ?

Yes of course, please click here to issue a trade insurance order.

A

Q Do you offer a customized sourcing service ?

A Yes please contact our sales team directly.

Q What format files shall we send for printing?

A Adobe illustrator would be best, cdr, Photoshop and PDF files are also OK.

Q How long is your warranty time?

A Function warranty time is 3years, printing warranty time is 1year.

You may negotiate with our sales team when ordering.

Q Do you own your own factory?

A Yes we have 3000 square meter workshop for RFID/NFC products.

Q Could I get the free sample for testing?

A Yes, in order to show our sincerity, we could support the free sample to you for testing..

Q Do you also supply OEM service?

A Yes, Since we keep professional manufactory with own moulding line and product line, so you could put your LOGO on our products to make them unique

ACM 海洋金桥
GOLDBRIDGE



SHENZHEN GOLDBRIDGE INDUSTRIAL CO.,LTD

Skype: Lily-jiang1206

Website: www.goldbridgesz.com

E-mail: sales@goldbridgesz.com

Whatsapp: [+86-13554918707](https://wa.me/8613554918707)

Add: Block A, Zhantao Technology Building,
Minzhi Avenue , Longhua District,
Shenzhen, China