

## Product Description

### **IP68 Metal Touch Display RFID Access Controller**

- > Metal case, anti-vandal
- > Digital backlit touch keypad
- > Multi-function standalone access controller and reader,
- > WG interface: WG26 Input / output
- > Capacity: 2000 cards / codes
- > Three accesses: card, pin, card + pin

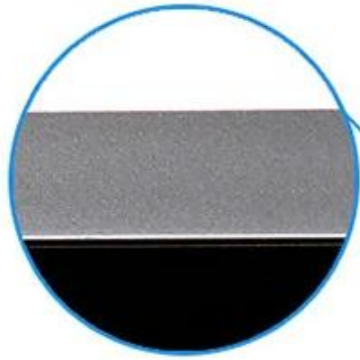
C  
a  
5  
H  
H  
7  
C  
a  
r  
d  
d  
W  
B  
6  
e  
r  
p  
r  
o  
o  
f  
d  
e  
g  
r  
e  
e  
U  
5  
U  
s  
e  
a  
p  
a  
c  
i  
t  
y

E  
%  
%  
o  
n  
m  
e  
n  
t  
H  
u  
m  
i  
d  
i  
t  
y  
%  
%  
A  
k  
o  
u  
t  
p  
u  
t  
W  
C  
i  
R  
V  
%  
%  
o  
l  
t  
a  
g  
e

**S**  
**B**  
**M**  
**A**  
i  
c  
e  
l  
e  
c  
t  
r  
i  
c  
i  
t  
y  
**A**  
**2**  
**A**  
r  
m  
o  
u  
t  
p  
u  
t

Inputs  
Short  
Circuit  
Protection  
Time  
Constant  
Add  
Distance

A  
n  
n  
i  
e  
n  
t  
t  
e  
m  
p  
e  
r  
a  
t  
u  
r  
e  
R  
S  
e  
a  
y  
W  
d  
s  
o  
c  
k  
o  
u  
t  
p  
u  
t  
D  
2  
n  
K  
a  
4  
K  
o  
a  
m  
m



Aluminium alloy



authorized cards, Green Led  
un-authorized cards, Red LED



Backlit keypad



Waterproof





We are Professional Access Control Manufacturer, We have Full System for Access Control Product as below:







### **ACM223**

Touch Keypad RFID & Keypad Access Control , 125Khz EM 1000/4000 User capacity

### **ACM209-NW**

Keypad Metal RFID Single door AccessControl (Non-waterproof), 125Khz EM

### **ACM208**

Waterproof RFID Single door Access Control and Reader



### **ACM210**

Metal RFID Single door Access Control  
(Non-waterproof)

### **ACM225**

Touch Keypad RFID Access  
Control, 125Khz EM, Can connect  
wiegand reader

### **ACM211B**

Touch Keypad Metal case Waterproof

RFID Access Control, Can connect  
wiegand reader

## Our Service

- 1, Any inquires will be replied within 24 hours
- 2, Professional manufacturer and supplier, Welcome to visit our website and our factory
- 3, OEM/ODM Available
- 4, High quality, fashin desing, reasonable & competitive price, fast lead time
- 5, After-sale Service :
  - 1), All products will have been strictly quality checked in house before packing
  - 2), All products will be well packed before shipping
  - 3), All our products have 2-3 year warranty if the damage is not caused by human
- 6, Faster delivery : Around 1~ 5 days for sample order, 7~30 days for bulk order
- 7, Payment : You can pay for the order via : T/T, Western Union, Paypal, Ali trade assurance
- 8, Shipping: We have strong cooperation with DHL, FEDEX, TNT, UPS, EMS, Forwarder by SEA and By AIR, You also can choose your own shipping forwarder.

## FAQ

### **Q: 1. How can I place an order?**

A: Please list your requirement to us via mail. Then we will send the offer to you at earliest time,after order confirmation, we will arrange production ASAP.

### **Q: 2.What about the payment and shipment?**

A: Trade Assurance and T/T ,Paypal, Western Union.  
Clients can choose by sea, air or express(DHL, FedEx, TNT UPS etc.)

### **Q: 3. How can i get a sample to check your quality?**

A:We could provide free sample to you, and the freight cost payed by you.

### **Q:4. How long can I expect to get the samples?**

A: It depends on the quantity. Normally 3-7 days for 5000pcs and 7-15 days for 100,000pcs

### **Q:5. Can your products be customized?**

A: Almost all of your products are customized ,including the materia, size, thickness and printing.  
OEM orders are highly welcome.

### **Q:6.Are you a trading company or factory?**

We are the one of the biggest manufacturer of RFID cards/NFC tags/RFID keybod /RFID wristband[]rfid reader and access control products in China more than 20 years.

