

## TuyaSmart WiFi video intercom access

### **Intercom**

- > 2.4G WiFi connection
- > Android and iOS available
- > Full duplex voice intercom
- > 2MP+wide angle camera and night vision
- > Support TF card with unlimited capacity
- > Support motion detection, playback, take picture/video, unlock remotely

### **Access Control**

- > PIN Length: 4~6 digits
- > EM card, Mifare card optional
- > Wiegand 26~44 bits in put & output
- > User data can be transferred
- > Touch key with one relay, 1000 users (988 common+2 panic+10 visitor)
- > Can be used as Wiegand reader with LED & buzzer
- > 2 devices can be interlocked for 2 doors



## 2.4G WiFi network, Mobile APP Intercom

Download APP by Searching  
TuyaSmart or Smartlife for both  
iOS & Android





Support  
Tuya APP



Max 2.0Mpx



140° Wide Angle



Touch Button



Multi-users



Support TF Card



Monitoring



Video Talking



Night Vision



Remote  
Unlocking

2.0Mpx(1080P) and  
**140°** wide angle camera

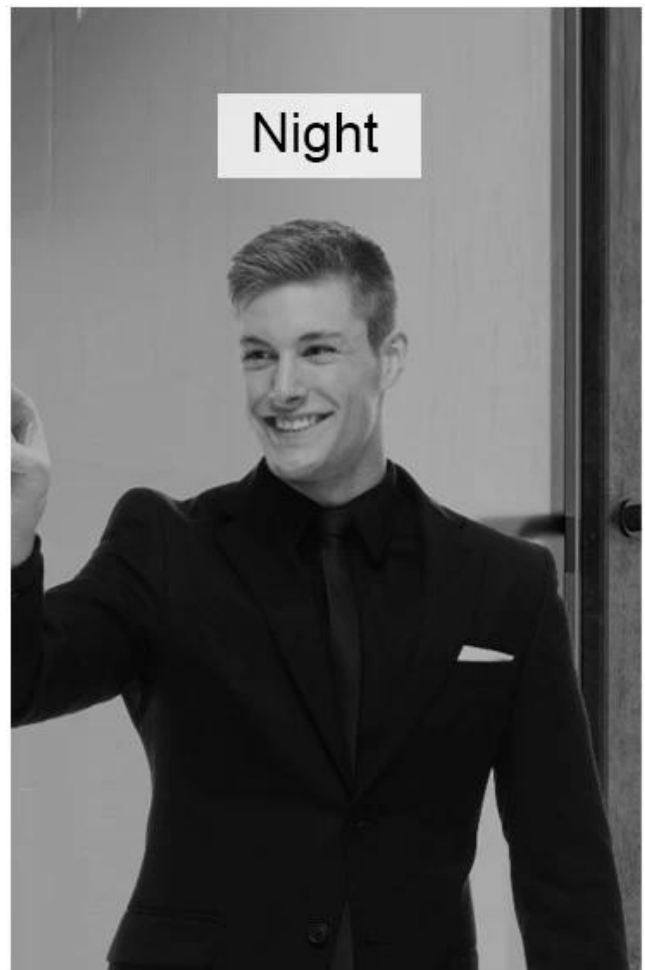
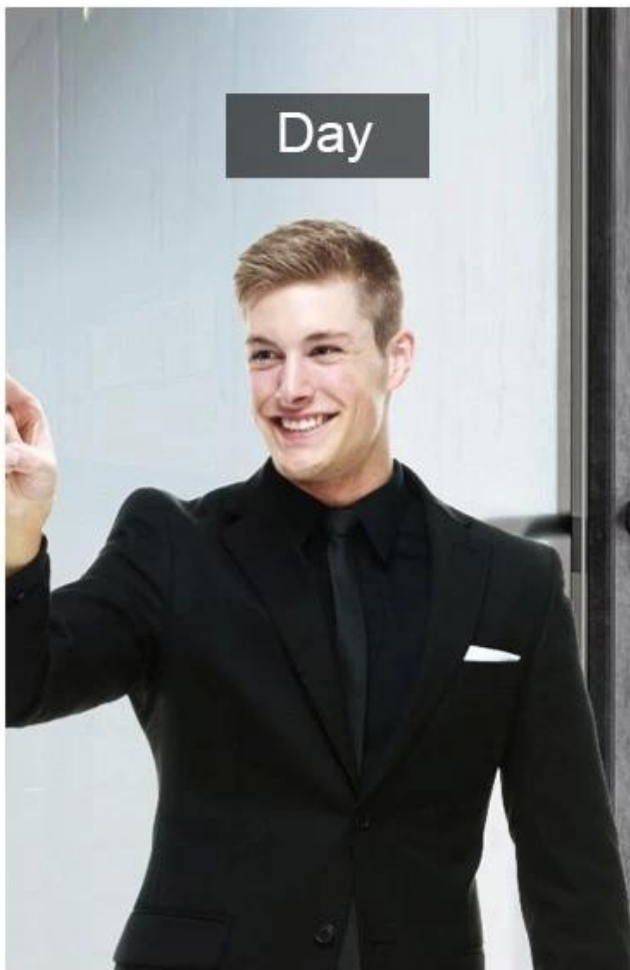


**Uses Rain Cover for Outdoor**



# Night Vision: IR-CUT

(Colorful at daytime, black and white at night)



# Three Access Way

Mobile, Card, PIN





---

User Capacity: 1000

Common User: 988

Visitor User: 10

Panic User: 2



Data 0

Data 1



Wiegand input & output

## Product size





# 20<sup>+</sup> YEARS EXPERIENCE

## OEM & ODM

ACCESS CONTROL SYSTEMS ONE STOP SOLUTION PROVIDER

Goldbridge is Top 10 China Manufacture On Alibaba,  
Specializes In Provide Kinds Of RFID/NFC Cards, FID Tags, RFID Card Reader,  
UHF Reader, Access Control System, Electromagnetic Locks, etc Since 1999



Customized  
Services



Quality  
Assurance



Fast  
Delivery



Best After-  
Sales Service

## ADVANTAGE



### WHY CHOOSE US?

- 1 FAST DELIVERY** Faster delivery by air by express. (DHL, UPS or Fedex)
- 2 LONG HISTORY** 20 years experience in RFID & Access Control industry
- 3 OEM ACCEPTABLE** 20 years OEM&ODM experience for 1000 + VIP client from US and Europe
- 4 HIGH QUALITY** Design and manufacture high quality products with 30 R&D engineers.



Supplier's Company

## OUR FACTORY



- **Access Control and RFID Reader Production Line:**
- Monthly production quantity is up to 50,000pcs , We are Provides OEM&ODM services including product research and development, LOGO printing, customized.etc



- **Electromagnetic lock & Smart Door Lock Production Line :**
- Monthly production quantity is up to 100,000pcs ,
- Our factory is built with modern manufacture environment, facilities, equipment and professional operation technicians.
- Goldbridge Provides OEM&ODM services including product research and development, LOGO printing and product box customized.



- **RFID & NFC Cards & Tags Production Line :**
- RFID Tag, Wristband, Keyfob: 11,000,000pcs (monthly output)
- Four Production Lines For Smart Card, PVC Card, Prelam Sheet: 20,000,000pcs (monthly output)
- Goldbridge Provides OEM&ODM services for LOGO printing, development, customized.

## APPLICATION

Bus, supermarket,school, government, hospital, factory



## CERTIFICATE



Access Control CE    Access Control RoHS    EM Lock EMC Certificate    EM Lock ROHS Certificate



RFID Card Reader CE    RFID Card Reader RoHS    UHF Reader CE Certificate    UHF Reader ROHS

## PRODUCT CATEGORY

### RFID / NFC SMART CARD

Be customized according to you need

Fit for systems of transport, E-payment, Access Control, Event, Loyalty, ect.

[View More](#)



### ACCESS CONTROL SYSTEM

Security for All: Network Access Control Board ,Standalone Access Controller, Biometric Access Control, T&A time attendance, Facial Access Control

[View More](#)

### RFID & LONG RANGE UHF READER

20+ Years of professional Experience in production of rfid uhf hardware

- UHF desktop reader writer,
- UHF integrated reader,
- UHF R2000 fixed reader,

[View More](#)



### ELECTRONMAGNETIC LOCK

Professional Electric Locks Manufacturer In China

Electromagnetic lock with OEM & ODM since 1999 60KG /110KG /180KG /280KG /350KG /500KG

[View More](#)

## FAQ

#### Q1 How can I place an order?

A1 Click start to order or list your requirement to us by email. Then we will send the offer to you ASAP, after the order confirmed, we will arrange production ASAP.

#### Q2 What about the payment and shipment?

A3 T/T , Paypal, Western Union etc.  
You can choose your agent or via our agent by sea, air or express (DHL,FedEx, TNT UPS etc.)

#### Q4 How can I get a sample to check your quality?

A4 We could provide the sample to you, pls check the sample cost and freight cost with us.

#### Q5 How long can I expect to get the goods?

A5 It depends on the quantity and shipping way. You can check with us before ordered.

#### Q6 Can your products be customized?

A6 Almost all of our products are customized , including the material, size, thickness and printing. OEM orders are highly welcome.



[Contact Us](#)



[BACK TO HOMEPAGE >](#)