

## RFID Card & Tags

### Hot selling products

			
RFID 125Khz Blank Card	RFID Card 13.56Mhz IC Card	NFC RFID PVC Smart Card	RFID Trash Can Tag
			
Ntag215 Coin TAG Key	rfid card inlay prelam	RFID Smart Tag Ntag-213 label	Blank Metal Credit Card
			
rfid silicone wristband	Ntag216 TAG Sticker	EM4305 125Khz keyfob	Waterproof Epoxy Nfc Sticker
			
125KHz EM4305 NFC Keyfobs	Shenzhen Goldbridge Industrial Co., LTD		Anti-theft Credit Card Holder

## 125KHz RFID Programmer Duplicator Copier Writer

# Reader Writer ID Card Cloner & key

Handheld shape design, comfortable hand feeling and high quality.

2 buttons for simple operations.

Standalone operation, no need to connect with computer / PC, easy to use.

Built-in individual LED lights and buzzer indicator.

Reading distance is 0 - 6cm.

Can only copy 125KHz RFID card, Compatible with T5577, CET5200, EM4305 and EN4305.

## Parameter

Read: EM / TK (EM4100 TK4100 etc) cards or keys

Write: EM4305 CET5557 T5577 5200 EM4205 etc cards or Keys

Built-in: individual LED lights and buzzer indicator, transceiver antenna

Power Supply: 3V (2 x AAA battery)

Times: Read / Write > 20000 times

Size: ( L\*W\*H ): 115 x 70 x 30mm

Weight: 85g





Micro USB Power and Data Port





Two power supply modes:  
four AAA batteries and  
micro USB port



Micro USB Port

Crystal keys,  
non-fading,  
sensitive contact



## How to use

**Read:** Put the inductive proximity card (EM4100 or TK4100 or has inside info EM4305 or T5577) in the induction area and hold the read key (left one). The buzzer will sound emitted by the green indicator for success. If the power light is only blinking, then the card reader failed. **Copy:** After the reading is successful, put the blank card in the induction area and hold the copy key(right one). The buzzer sound emitted by the yellow indicator for success. If the power light is only blinking, then the card reader failed.



# How to Use

Read (TK4100 EM4100 etc) Card/Key

Write (EM4305 T5577 etc) Card/Key







## 125KHz手持复制器 125KHz RFID Re-write

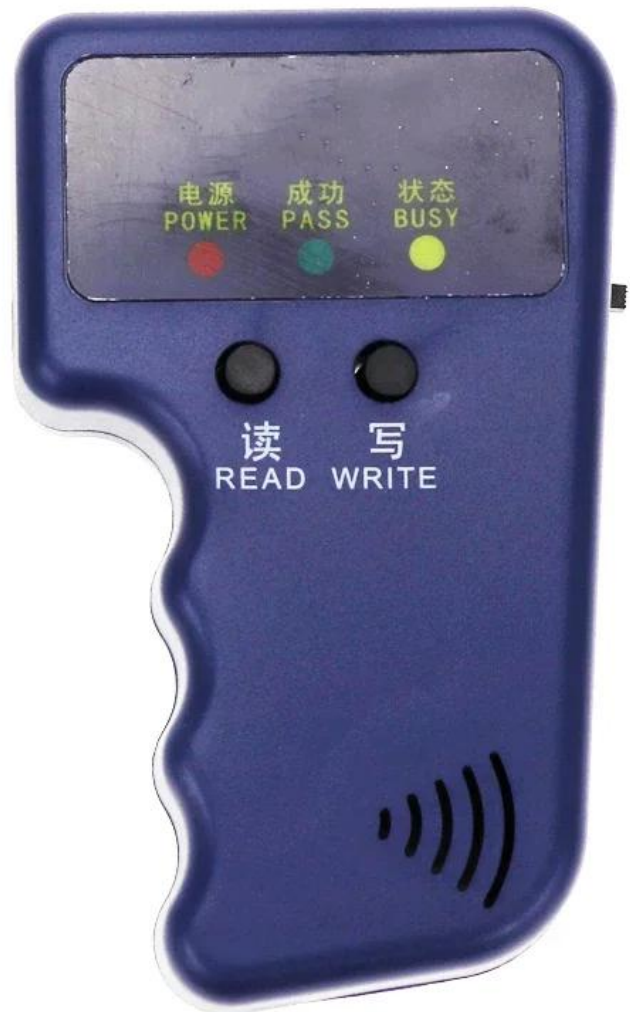
- ☐ 可复制EM4100  
Support Em4100
- ☐ 可复制EM4100/HID/AWID  
Support EM4100/HID/AWID

### 备注：

- (1) EM4100复制器开机响2声
- (2) EM4100/HID/AWID复制器开机响3声

### Remark:

- How to distinguish two device listed above?
- (1) The device beep 2 times when power on is supported EM4100.
  - (2) The device beep 3 times when power on is supported EM4100, HID, AWID.



## Related Products

---



## NFC Tags / Lable






				
\$0.1—\$0.23	\$0.15—\$0.25	\$0.25—\$0.35	\$0.25—\$0.45	\$1.25—\$10.5
ACM-NT001	ACM-NT002	ACM-NT003	ACM-NT004	ACM-NT005

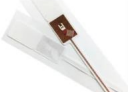




				
\$0.08—\$0.15	\$0.1—\$0.25	\$0.08—\$0.15	\$0.25—\$0.45	\$0.15—\$0.25
ACM-NT006	ACM-NT007	ACM-NT008	ACM-NT009	ACM-NT010

**Animal Tag** mainly for animal breeding, transportation, slaughter tracking.






## Industry RFID Tag Series

				
windshield tag	NTAG 424DNATT	retail tag	Apparel tag	Windshield tag
ACM-WT001	ACM-ST002	ACM-ST003	ACM-AT010	ACM-WT005






  

				
jewelry tag	blood bottle tag	FPC tag	cloth tag	ticket tag
ACM-JT001	ACM-BT002	ACM-FT001	ACM-CT021	ACM-TT001

				
book tag	seal tag	Library tag	pipe tag	screw tag
ACM-BT001	ACM-T011	ACM-BT002	ACM-PT001	ACM-ST012

				
asset tag	cable tag	pcb tag	laundry tag	laundry tag
ACM-AT015	ACM-CT015	ACM-PT005	ACM-CT022	ACM-CT023







# RFID LF/HF/UHF TAG



Application: Outdoor power equipment inspection, tower pole elevator inspection, Pressure cylinders, gasoline bottles, a variety of electrical appliances tracking, Taxi, vessels management, Mold management, Asset management, Logistics ect.,



\$0.18—\$0.23

ACM-CT001



\$0.25—\$0.3

ACM-CT002



\$0.25—\$0.3

ACM-CT004



\$0.25—\$0.3

ACM-CT003



\$0.13—\$0.18

ACM-CT005



\$0.08—\$0.13

ACM-MT001



\$0.21—\$0.26

ACM-MT002



\$0.25—\$0.3

ACM-MT003



\$0.55—\$0.7

ACM-MT004



\$0.55—\$0.7

ACM-MT005



\$0.29—\$0.35

ACM-ZT001



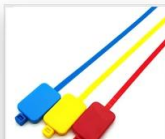
\$0.21—\$0.29

ACM-ZT003



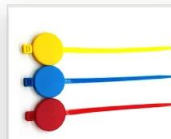
\$0.25—\$0.35

ACM-ZT006



\$0.25—\$0.35

ACM-ZT007



\$0.25—\$0.35

ACM-ZT008



\$0.3—\$0.35

ACM-ST001



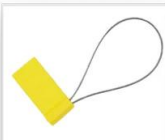
\$0.3—\$0.35

ACM-ST003



\$0.3—\$0.35

ACM-ST002



\$0.3—\$0.35

ACM-ST004



\$0.3—\$0.35

ACM-ST005



\$0.5—\$0.7

ACM-AT001



\$0.5—\$0.7

ACM-AT002



\$0.45—\$0.7

ACM-CT011



\$1.2—\$1.5

ACM-CT012



\$0.8—\$1.35

ACM-CT013



\$0.25—\$0.35

ACM-CT021



\$0.65—\$1.0

ACM-AT001



\$3.0—\$4.0

ACM-CT022



\$0.23—\$0.3

ACM-TT001



\$0.2—\$0.3

ACM-TT002



**Company Information**

---



# 20<sup>+</sup> YEARS EXPERIENCE OEM & ODM

## ACCESS CONTROL SYSTEMS ONE STOP SOLUTION PROVIDER

Goldbridge is Top 10 China Manufacture On Alibaba, Specializes In Provide Kinds Of RFID/NFC Cards, FID Tags, RFID Card Reader, UHF Reader, Access Control System, Electromagnetic Locks, etc Since 1999



Customized Services



Quality Assurance



Fast Delivery



Best After-Sales Service

## OUR FACTORY



### Access Control and RFID Reader Production Line:

- Monthly production quantity is up to 50,000pcs, We are Provides OEM&ODM services including product research and development, LOGO printing, customized.etc



### Door Lock Production Line

### Electromagnetic lock & Smart Door Lock Production Line :

- Monthly production quantity is up to 100,000pcs,
- Our factory is built with modern manufacture environment, facilities, equipment and professional operation technicians.
- Goldbridge Provides OEM&ODM services including product research and development, LOGO printing and product box customized.



### RFID & NFC Cards & Tags Production Line :

- RFID Tag, Wristband, Keyfob: 11,000,000pcs (monthly output)
- Four Production Lines For Smart Card, PVC Card, Prelam Sheet: 20,000,000pcs (monthly output)
- Goldbridge Provides OEM&ODM services for LOGO printing, development, customized.

## ADVANTAGE



### WHY CHOOSE US?

- FAST DELIVERY** Faster delivery by air by express. (DHL, UPS or Fedex)
- LONG HISTORY** 20 years experience in RFID & Access Control industry
- OEM ACCEPTABLE** 20 years OEM&ODM experience for 1000 + VIP client from US and Europe
- HIGH QUALITY** Design and manufacture high quality products with 30 R&D; engineers.

## APPLICATION

Bus, supermarket, school, government, hospital, factory



## CERTIFICATE







## PRODUCT CATEGORY

### RFID / NFC SMART CARD

Be customized according to you need

Fit for systems of transport, E-payment, Access Control, Event, Loyalty, ect.



[View More](#)

### ACCESS CONTROL SYSTEM

Security for All: Network Access Control Board ,Standalone Access Controller, Biometric Access Control, T&A time attendance, Facial Access Control



[View More](#)

### RFID & LONG RANGE UHF READER

20+ Years of professional Experience in production of rfid uhf hardware

- UHF desktop reader writer,
- UHF integrated reader,
- UHF R2000 fixed reader,



[View More](#)

### ELECTRONMAGNETIC LOCK

Professional Electric Locks Manufacturer In China

Electromagnetic lock with OEM & ODM since 1999 60KG /110KG /180KG /280KG /350KG /500KG



[View More](#)

## FAQ

#### Q1 How can I place an order?

A1 Click start to order or list your requirement to us by email. Then we will send the offer to you ASAP, after the order confirmed, we will arrange production ASAP.

#### Q2 What about the payment and shipment?

A3 T/T , Paypal, Western Union etc.  
You can choose your agent or via our agent by sea, air or express (DHL,FedEx, TNT UPS etc.)

#### Q4 How can I get a sample to check your quality?

A4 We could provide the sample to you, pls check the sample cost and freight cost with us.

#### Q5 How long can I expect to get the goods?

A5 It depends on the quantity and shipping way. You can check with us before ordered.

#### Q6 Can your products be customized?

A6 Almost all of our products are customized , including the material, size, thickness and printing. OEM orders are highly welcome.



[Contact Us](#)



[BACK TO HOMEPAGE >](#)



