

## RS485 Single Door Access Control Panel

Parameter	Single Door Control Panel	Multi Door (2) Control Panel	Multi Door (4) Control Panel
ACM Model	ACM-WG01	ACM-WG02	ACM-WG04
Communication	TCP/IP and RS485	TCP/IP and RS485	TCP/IP and RS485
Description	Control 1 door, get in and out door by swiping card, or get in by swiping card and get out door by button	Control 2 doors, get in and out door by swiping card, or get in by swiping card and get out door by button	Control 4 doors, get in the door by swiping card, and get out door by button
Size of PCB board	160mm *106mm	160mm *106mm	218mm *106mm
Size of Case	273mm*228mm*65mm		
Power Supply	12VDC 4-7A		
Power Consumption of Circuit Board	Less than 100mA		
Input Format of Reader	Wiegand 26 (All card reader with compatible protocol, such as Motorola ,HID,EM,Mifare one etc)		
Quantity of Readers	2 pcs	4 pcs	4 pcs
Door Controlled	1 door	2 doors	4 doors
Door opening time extending setting	1-600 seconds(adjustable)		
Max q ' ty of controller	No limit		
Operation Temperature	-40°C~70°C		
Operation Humidity	10-90 % RH , No Condensation		
Q ' ty of users	20,000 Users		
Q ' ty of Event Buffers(offline)	100,000 event buffers		
Power interruption protection measure	High Speed Memory, Records never lose		
Max Distance from Reader to Controller	100m (suggestion distance 80m)		
Max Distance between Controllers	TCP/IP: Depends on net coverage area		
Package included:	PCB board, software, manual, certificate. carton		
Alarm for long time door open, ilegal break in, intimidate	Yes		

Fire and alarm linkage	If no connection with the expansion board, only has software interface alarm, and drive the computer speaker. If connected with expansion board, is able to alarm by hardware, if connected with strengthened expansion board, then is able to Security alarm, Model is ACB-EA05		
Compulsive open and close door at long time	Yes		
Open door in remote distance	Yes		
Interlock	No	Yes	Yes
Anti pass back and tail	Yes	Yes	Yes
Multi-card open door	Yes		
Open long time at specified time	Yes		
Electronic map	Yes		
Urgency locking	Yes		
First card unlocking	Yes		
Unlock based on internal and external validation	Yes		
Keypad (card+password, super password)	Yes		



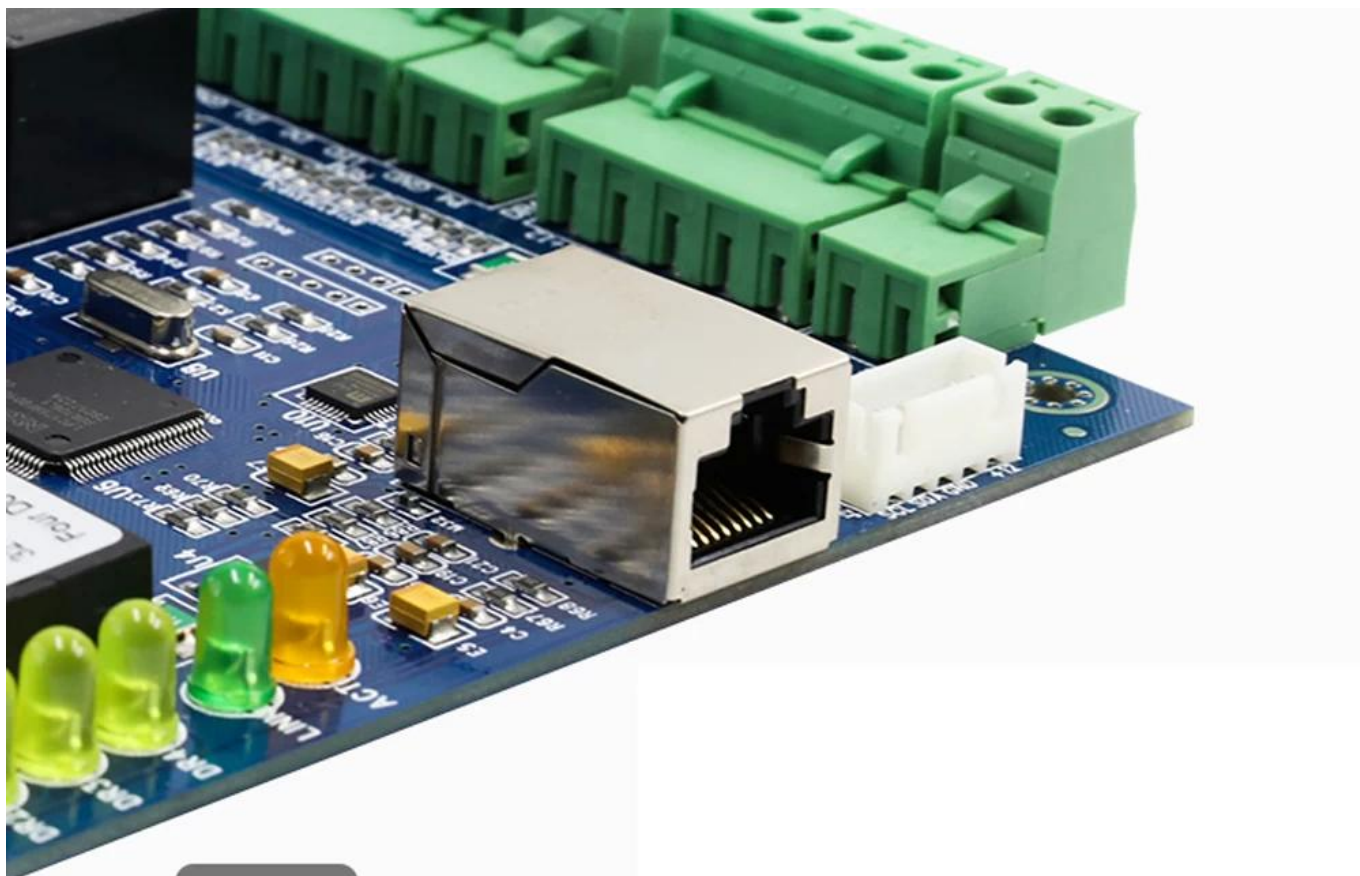


01

## Indicator light

When using related functions,  
the related indicators will light up  
Remind to inform the effect to ensure correct operation





02

## Cable interface

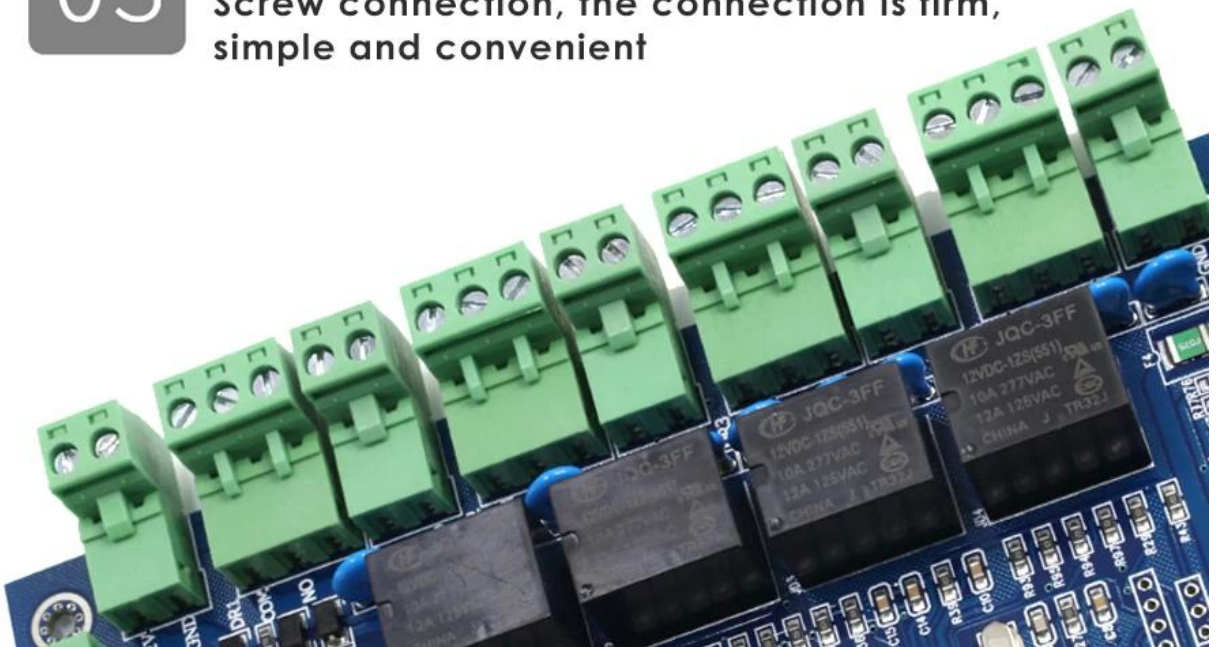
Equipped with network cable interface,  
the equipment network work is more convenient and accurate

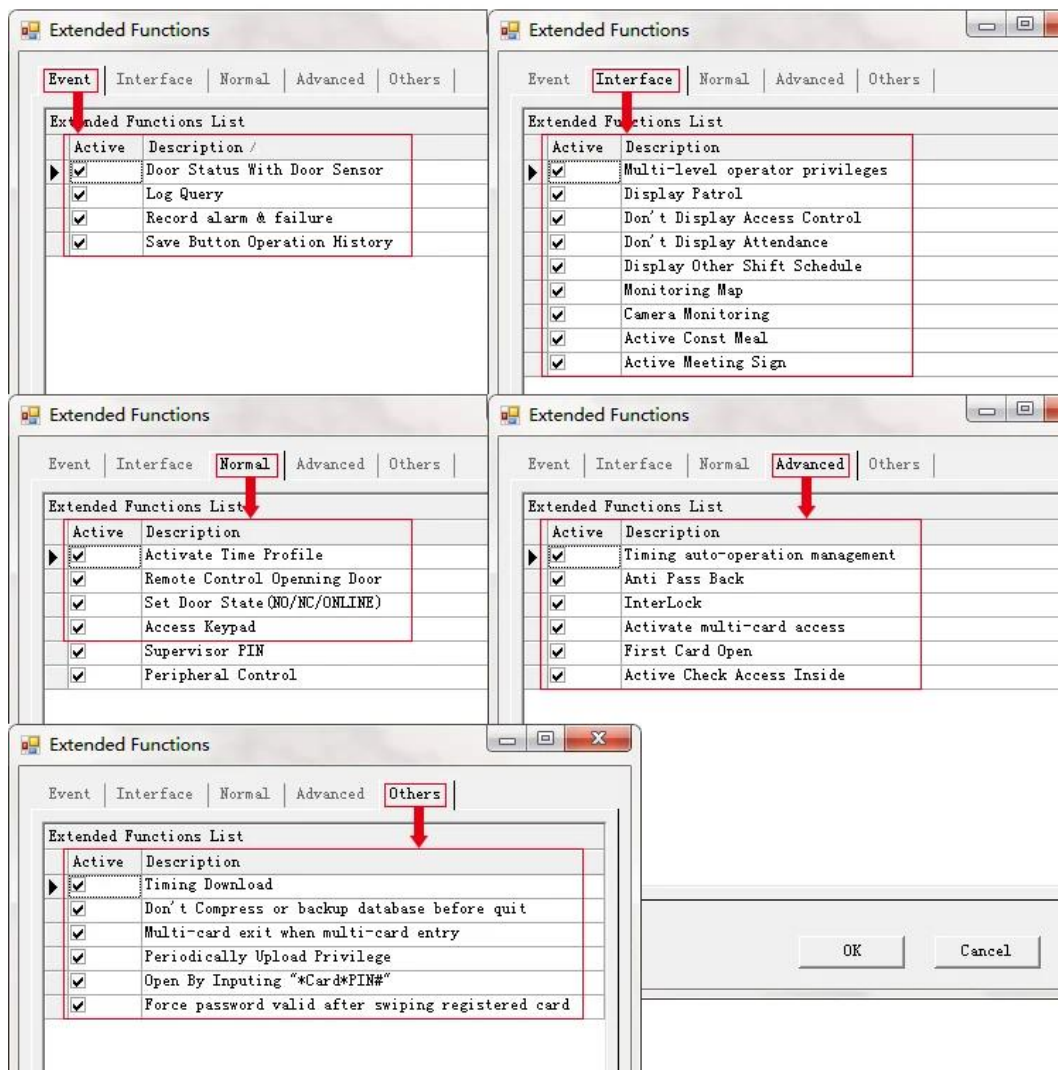
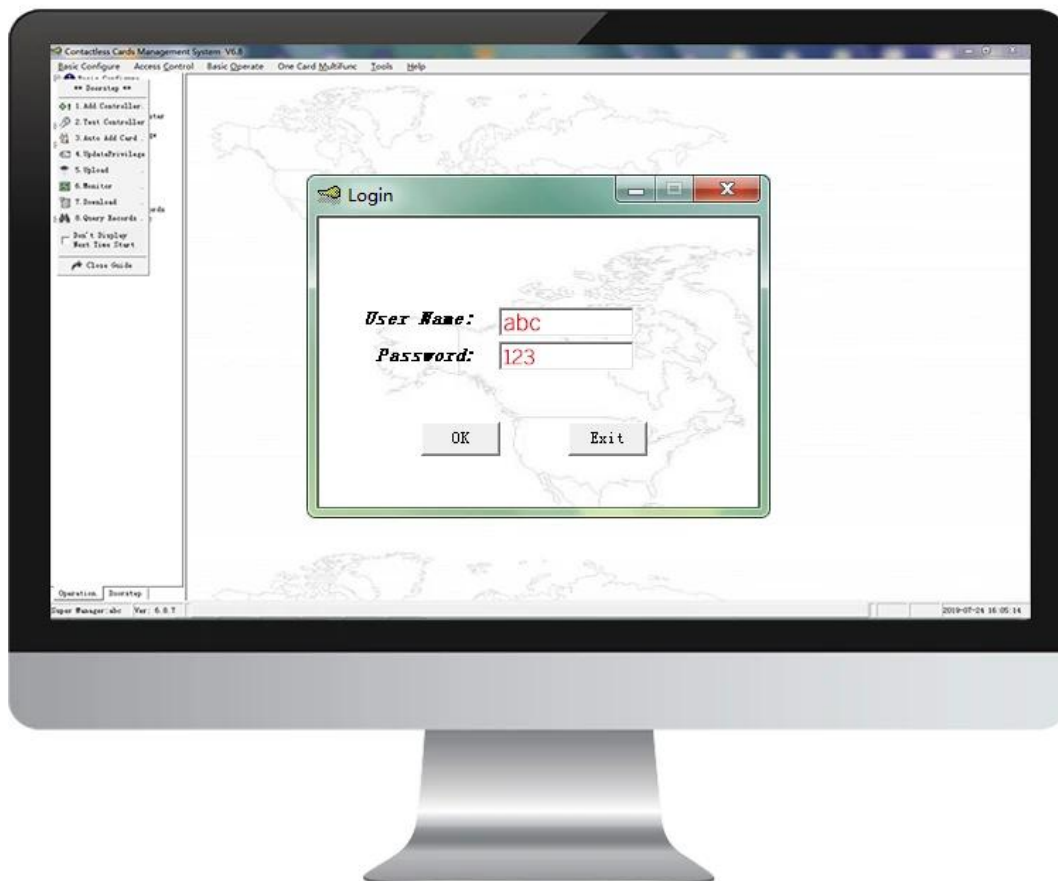


03

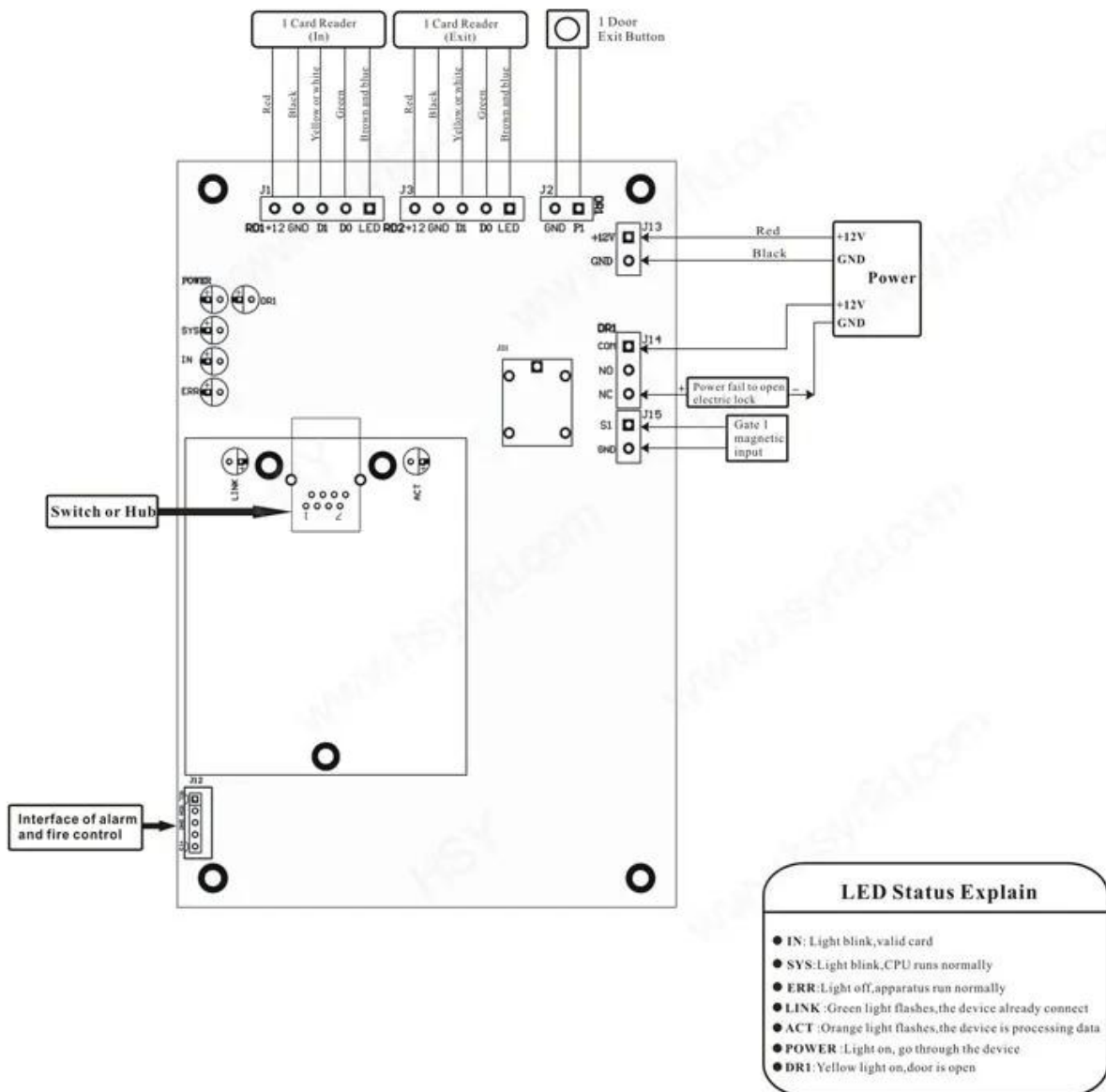
## Screw connection

Screw connection, the connection is firm, simple and convenient





## Signal Door Access Controller Wiring Diagram (TCP/IP Communication)





## Scope of Application



Company



Hospital



Hotels



Logistics



Port



Financial



Government



Factory



Aviation



School

## Packing & Delivery

Every order we will check the quality firstly to ensure our customer get the best product. Our staff will pack it carefully to avoid the damage of transportation. We will ship every goods out as soon as possible.



**EXW**

**FCA FOB**

**CIF CFR**



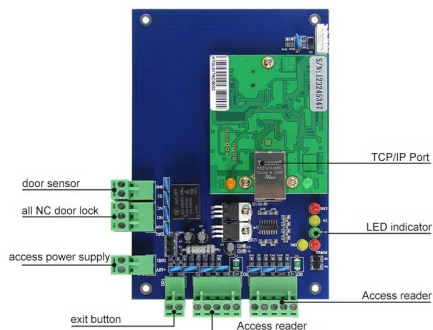
## Shipping Way (Just for new customers reference )

We are one of the leading exporter of RFID products in China since 2000 years . With rich international trade experience we know the international shipping very well , We know which express or air/sea line is cheap and safe to your country . We can supply various certificate for you to clean your custom to such as CO , FTA , Form F , Form E ...Ect . We wil provide our professional suggestion for your shipping . EXW , FOB , FCT , CIF , CFR ...trade term are ok for us . We can be your reliable partner for products and shipping .

We are professional comprehensive security access control products supplier with 20 years experience, we make sure to offer the best solution of access control system solution! So, send your inquiry details in the below, ccontact us now!!

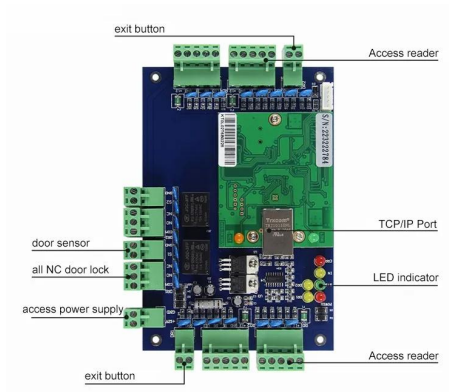
We are looking forward to forming successful business relationships with new clients around the world in the future.

## Related Products



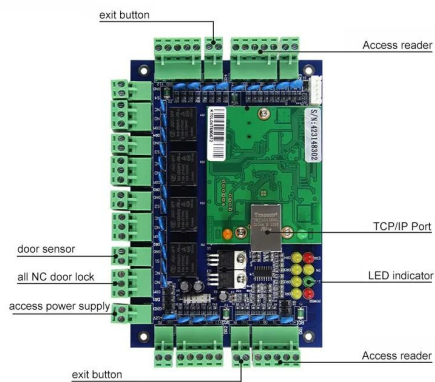
### ACM-WEG01

It can control 1 door.



## ACM-WEG02

It can control 2 door.



## ACM-WEG04

It can control 4 door.

## You May Like





**ACM-K2A/B**

No touch Door Release Exit Button with led

**ACM-Y180**

Surface mounted magnetic lock (180kg)

**ACM-Y806-5A**

Power supply 5A for access control





### **ACM225**

Touch Keypad RFID Access Control  
12khz

### **ACM-210**

Metal Waterproof RFID Wiegand  
Access Control

### **ACM26X**

125Khz EM Card RFID Reader Size:  
115mm×75.5mm×16.8mm

## **Our Service**

- 1, Any inquires will be replied within 24 hours
- 2, Professional manufacturer and supplier, Welcome to visit our website and our factory
- 3, OEM/ODM Available
- 4, High quality, fashin desing, reasonable & competitive price, fast lead time
- 5, After-sale Service :
  - 1), All products will have been strictly quality checked in house before packing
  - 2), All products will be well packed before shipping



3), All our products have 2-3 year warranty if the damage is not caused by human  
6, Faster delivery : Around 1~ 5 days for sample order, 7~30 days for bulk order  
7, Payment : You can pay for the order via : T/T, Western Union, Paypal,  
8, Shipping: We have strong cooperation with DHL, FEDEX, TNT, UPS, EMS, Forwarder by SEA and By AIR, You also can choose your own shipping forwarder.

## FAQ

### **Q: 1. How can I place an order?**

A: Please list your requirement to us via mail. Then we will send the offer to you at earliest time, after order confirmation, we will arrange production ASAP.

### **Q: 2. What about the payment and shipment?**

A: Trade Assurance and T/T, Paypal, Western Union.  
Clients can choose by sea, air or express (DHL, FedEx, TNT UPS etc.)

### **Q: 3. How can I get a sample to check your quality?**

A: We could provide free sample to you, and the freight cost paid by you.

### **Q: 4. How long can I expect to get the samples?**

A: It depends on the quantity. Normally 3-7 days for 5000 pcs and 7-15 days for 100,000 pcs

### **Q: 5. Can your products be customized?**

A: Almost all of your products are customized, including the material, size, thickness and printing.  
OEM orders are highly welcome.

### **Q: 6. Are you a trading company or factory?**

We are one of the biggest manufacturers of RFID cards/NFC tags/RFID keyfobs/RFID wristbands/RFID reader and access control products in China more than 20 years.