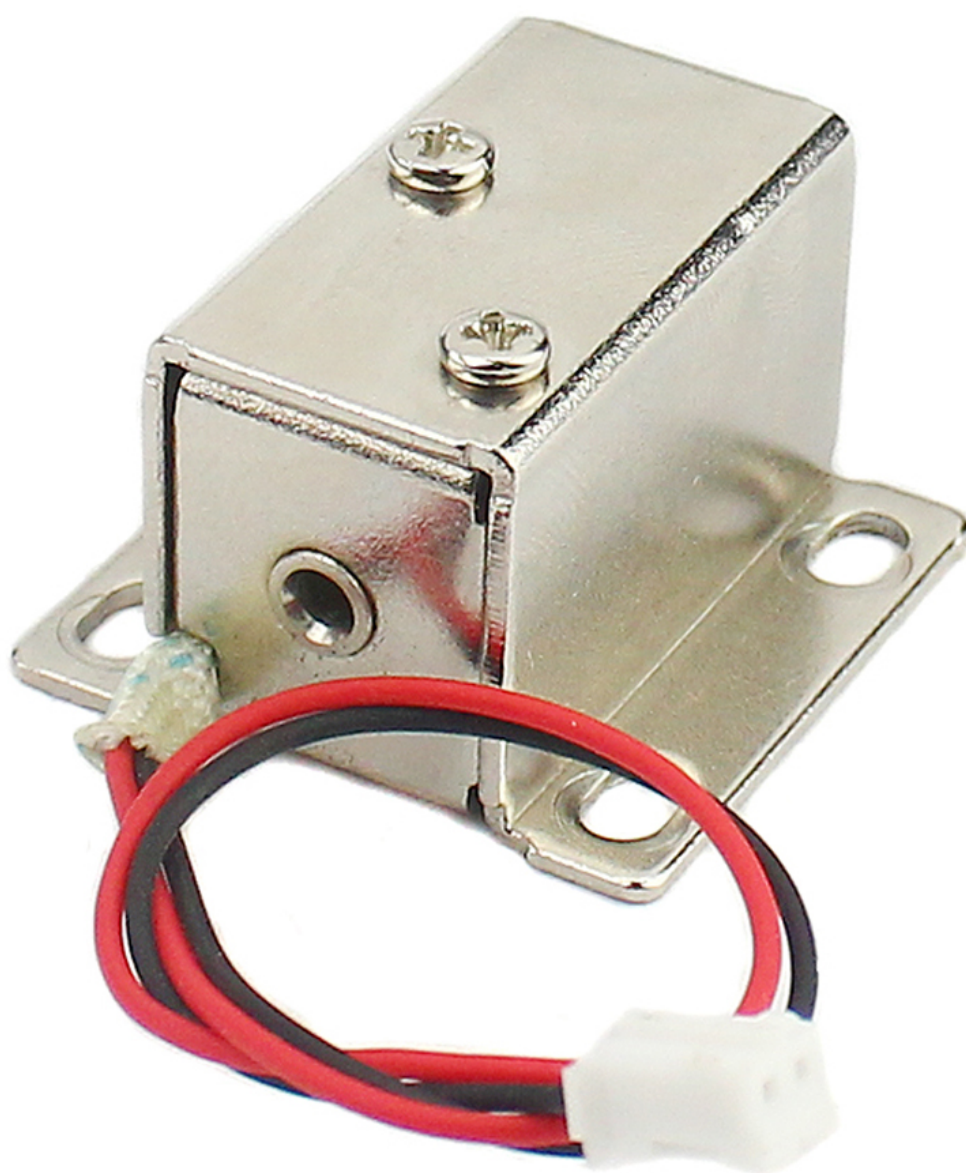
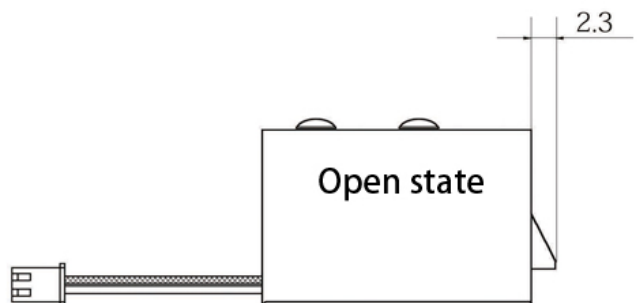
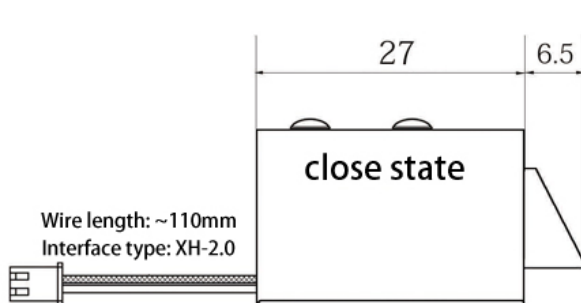
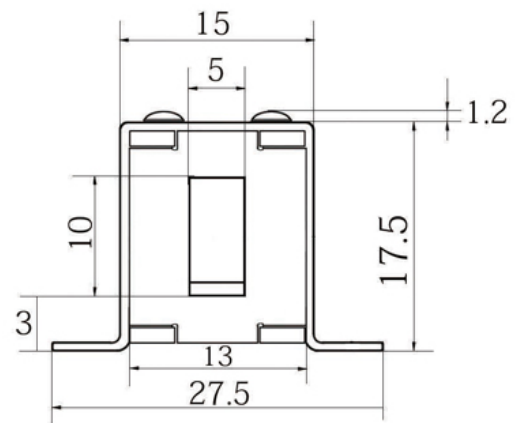
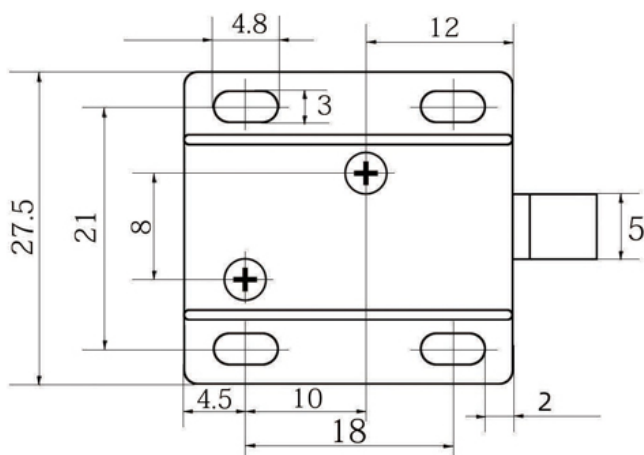
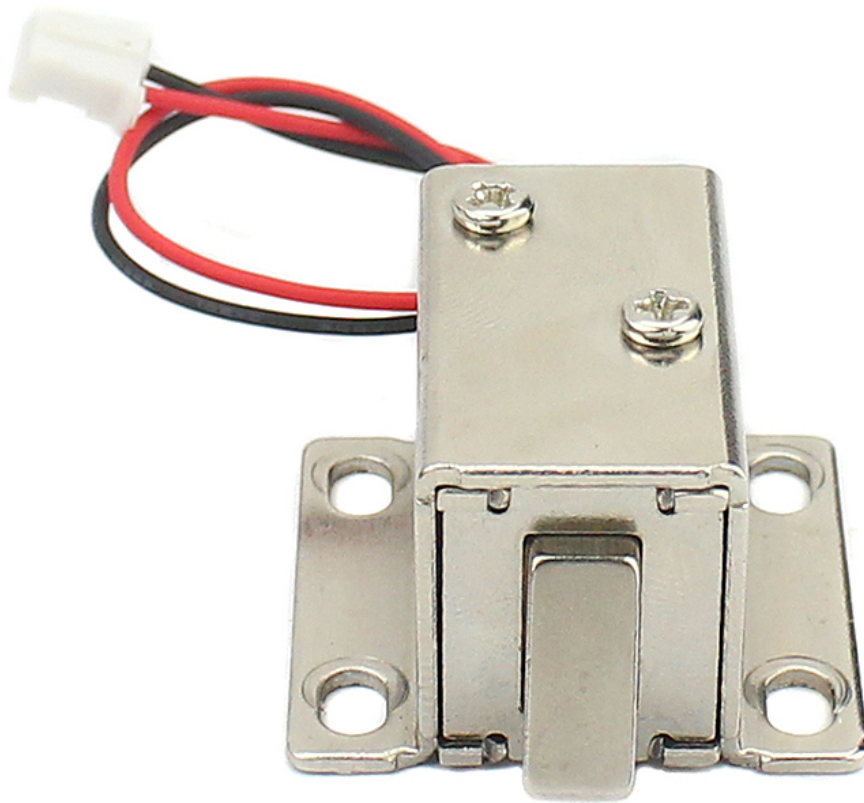


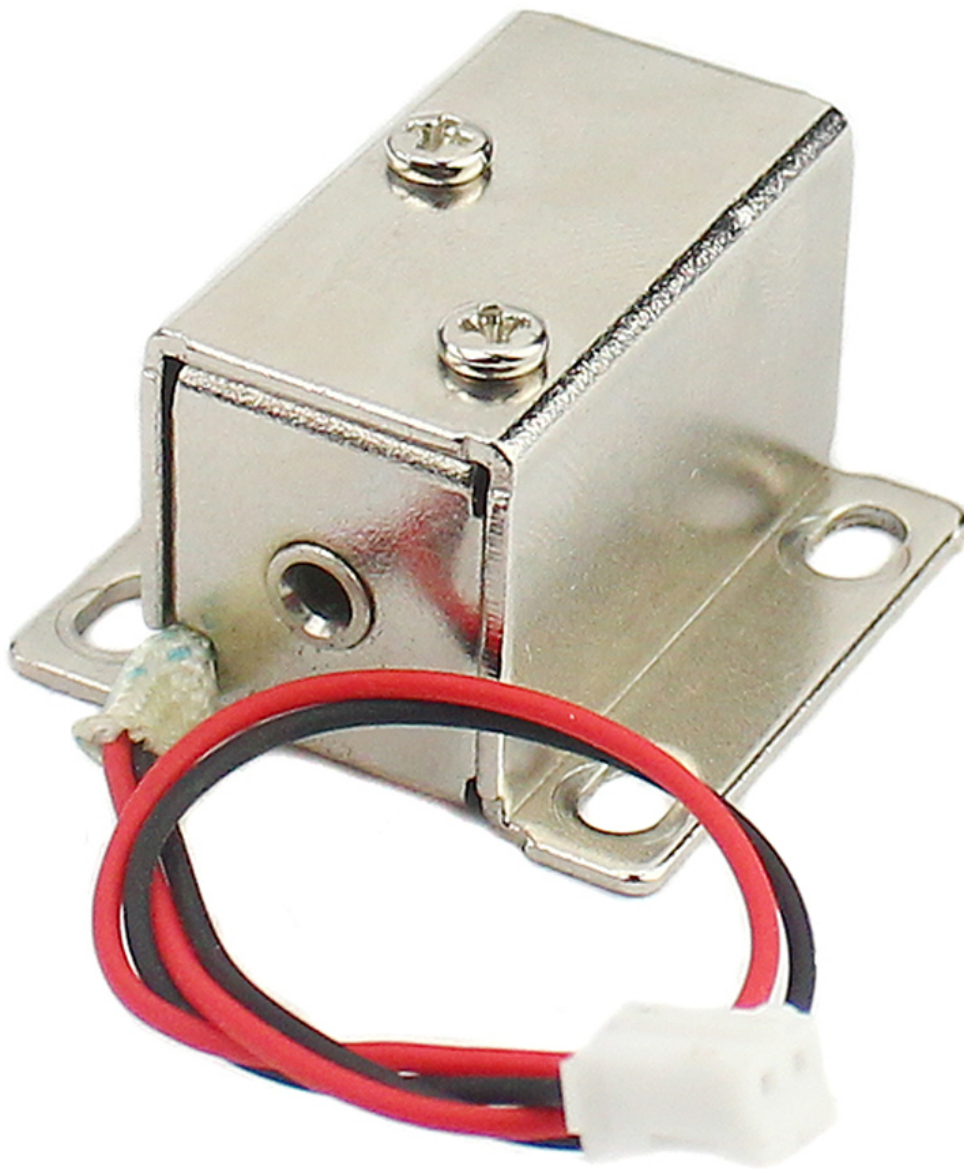
## Product Description



Product Parameter	Parameter Description
Size	54.5Lx41Wx28H(mm)

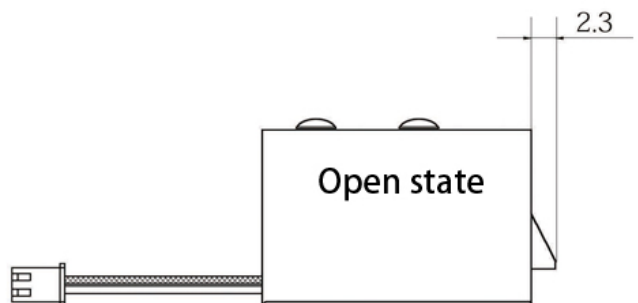
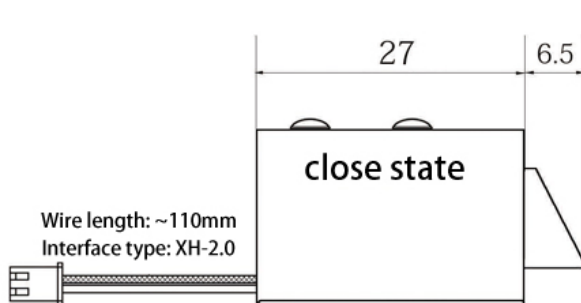
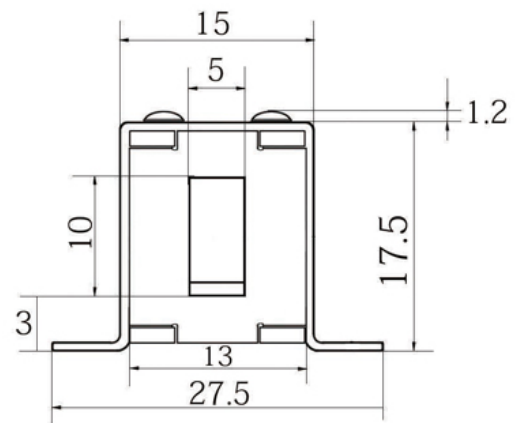
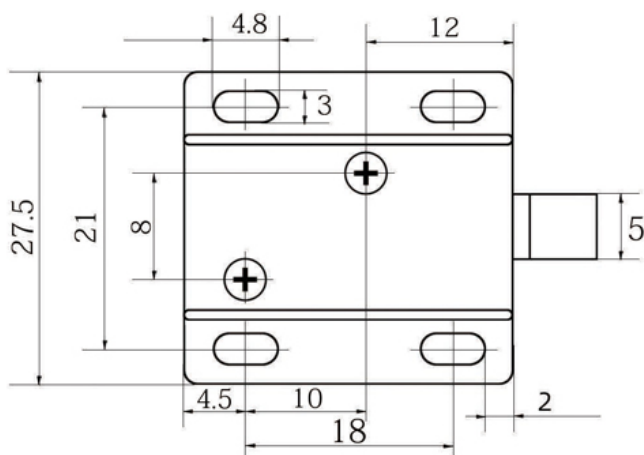
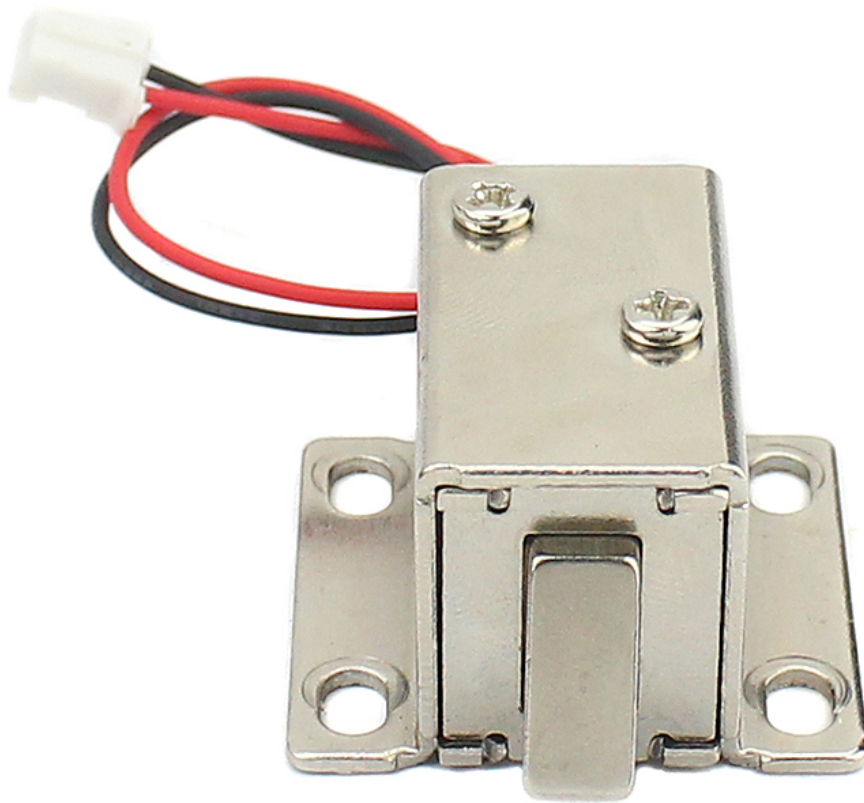
Pin length	10Lx10Wx10H(mm)
Current	0.65A ± 10%
Input Voltage :	DC12V
Suitable for door:	File Cabinet ,Disply Cabinet
Armature Plate Finish	Zinc
Weight:	0.18kg
Temperature	-40℃~+50℃





Product Parameter	Parameter Description
Size	54.5Lx41Wx28H(mm)
Pin length	10Lx10Wx10H(mm)
Current	0.65A $\pm$ 10%

Input Voltage : DC12V  
Suitable for door: File Cabinet ,Disply Cabinet  
Armature Plate Finish Zinc  
Weight: 0.18kg  
Temperature -40°C~+50°C





## Related Products



## SHENZHEN GOLDBRIDGE INDUSTRIAL CO.,LTD ACM Door Locks & Bracket - Distributor Wholesale

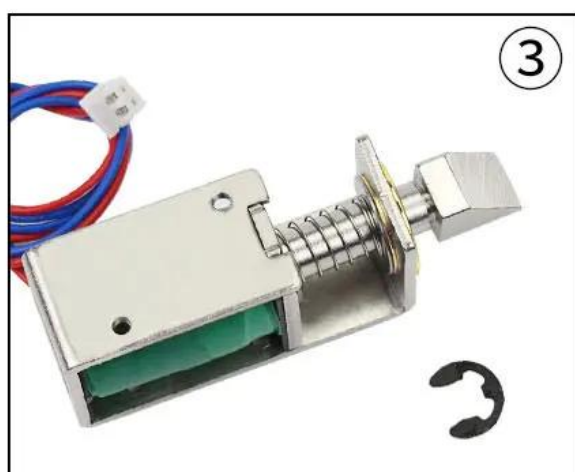
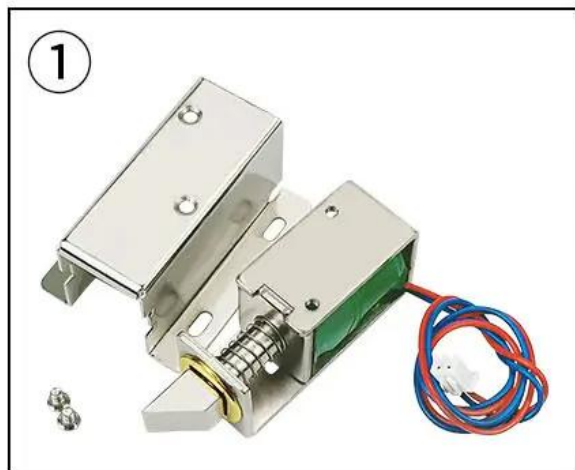


Re: ACM Brand Door Electromagnetic Magnetic EM Lock				
Magnetic lock (60kg/100lbs) , Size: 80×38×25 mm (ACM-Y60)	180KG/300LBS indicator magnetic lock, LED , Size: 170×40×21 mm (ACM-Y180/Y350/Y500)	280KGS/600LBS LED/Timer Magnetic Lock, 5bolts Size: 250×47×25 mm (ACM-Y280)	560kg/1200lbs LED Dual Door Magnetic Lock ,Size: 500×47×25 mm (ACM-Y280D)	280kgs/600lbs & 180kg/300lbs Concealed magnetic lock (ACM-Y280N:224×40×25 mm /Y180N:184×30.5×22.5 mm)
RE: Electric Strike , Electric Deadbolt Lock , RIM Lock, Cabinet Lock				
Long type Electronic Strike LockSize: 250x25x31mm (ACM-Y132)	Electronic Strike Lock Size: 110x25x31mm (ACM-Y130)	Electronic Strike Lock Size: 149x28x31mm (ACM-Y131)	Model Item: ACM-Y138A / ACM-138B Lock Size: 149x39x34mm	Model Item: ACM-Y137S Feedback Singal Lock Size: 150x38x34mm
ACM-Y100-2pin Fail Safe Sturdiness Electronic lock Lock Size : 205x34x40 mm	Item: ACM-Y200 -2pin Timer-delay Lock , Power to unlock , 205×34×40 mm	Item: ACM-Y100S -2Pin Time -delay &NO/NC feedback signal Power to unlock. 205×34×40 mm	Item: ACM-Y200S -5Pin Time -delay &NO/NC/COM feedback signal, 205×34×40 mm	Item: ACM-Y300S -5Pin Time -delay &NO/NC/COM feedback signal, 235×35×42 mm
Model Item: ACM-YB032 Electric Display Cabinet Lock	Item: ACM-Y700A/ACM-Y700B Fail Safe Sturdiness Narrow Door lock NO/NC. 205x30x38mm	Model Item: ACM-Y138A/ ACM-138B Lock Size: 149x39x34mm	ACM-Y500U frameless glass doors and glass wall lock Size : 148x43x39 mm	ACM-Y800 Electric Dropbolt with Key Lock Size: 268x30x38mm
Stainless steel electric control RIM lock,Size: 125x98x36mm (ACM-Y091)	CISA Electric RIM Lock, Size: 148×107×35 mm (ACM-Y035)	Yale Waterproof Electric RIM Lock, Size:140×116×55 mm (ACM-Y045)	Hot Sale Electric RIM Lock, Size: 126×101×39 mm,Double cylinders with push button (ACM-Y042)	Yale Waterproof Electric RIM Lock, Size:140x116x55 mm (ACM-Y047)

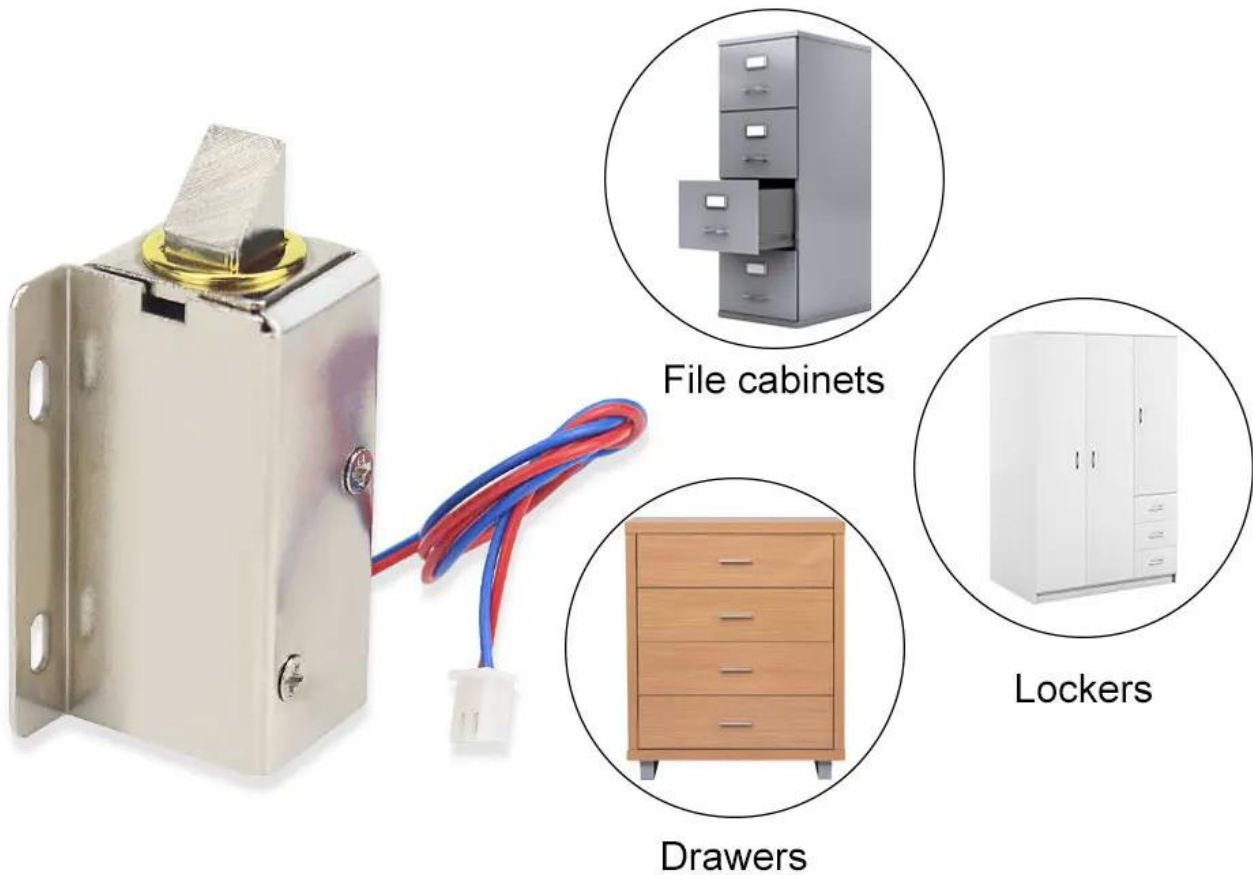
Whatsapp: +86-14554918707 , E-mail: lilyjiang\_06@163.com, sales@goldbridgesz.com ; www.goldbridgesz.com

For More Products Price List and informations , Please contact our sales at sales@goldbridgesz.com, thank you !

## Instalation Diagram







## Quality Warranty

- Warranty Service will be honored if the damage is not caused by human, ACM Goldbridge provides 2 years warranty for relative products.
- On the contrary, ACM Goldbridge will cahрге extra if repair.
- More information, please browse our service center.

## Packing & Delivery

### Shipping Way

We have strong cooperation with DHL, FEDEX, TNT, UPS, EMS, Forwarder by SEA and By AIR  
You also can choose your own shipping forwarder.

### Packaging

Bolt Lock packaging: 1unit per box, 30pcs per carton,  
Carton size : 54.5\*20\*30.5cm , Gross Weight :12kg. 50 cartons per pallet



## Our Service

- 1, Any inquiries will be replied within 24 hours
- 2, Professional manufacturer and supplier, Welcome to visit our website and our factory
- 3, OEM/ODM Available
- 4, High quality, fashion design, reasonable & competitive price, fast lead time
- 5, After-sale Service :
  - 1), All products will have been strictly quality checked in house before packing
  - 2), All products will be well packed before shipping
  - 3), All our products have 2-3 year warranty if the damage is not caused by human
- 6, Faster delivery : Around 1~ 5 days for sample order, 7~30 days for bulk order
- 7, Payment : You can pay for the order via : T/T, Western Union, Paypal.
- 8, Shipping: We have strong cooperation with DHL, FEDEX, TNT, UPS, EMS, Forwarder by SEA and By AIR, You also can choose your own shipping forwarder.

## FAQ

### Q: 1. How can I place an order?

A: Please list your requirement to us via email. Then we will send the offer to you at earliest time, after order confirmation, we will arrange production ASAP.

### Q: 2. What about the payment and shipment?

A: Trade Assurance and T/T, Paypal, Western Union.

Clients can choose by sea, air or express(DHL, FedEx, TNT UPS etc.)

**Q: 3. How can i get a sample to check your quality?**

A:We could provide free sample to you, and the freight cost payed by you.

**Q:4. How long can I expect to get the samples?**

A: It depends on the quantity. Normally 3-7 days for 5000pcs and 7-15 days for 100,000pcs

**Q:5. Can your products be customized?**

A: Almost all of your products are customized ,including the materia, size, thickness and printing. OEM orders are highly welcome.

**Q:6.Are you a trading company or factory?**

We are the one of the biggest manufacturer of RFID cards/NFC tags/RFID keybod /RFID wristband□rfid reader and access control products in China more than 20 years.



# 20<sup>+</sup> YEARS EXPERIENCE OEM & ODM

## ACCESS CONTROL SYSTEMS ONE STOP SOLUTION PROVIDER

Goldbridge is Top 10 China Manufacture On Alibaba,  
Specializes In Provide Kinds Of RFID/NFC Cards, FID Tags, RFID Card Reader,  
UHF Reader, Access Control System, Electromagnetic Locks, etc Since 1999



Customized  
Services



Quality  
Assurance



Fast  
Delivery



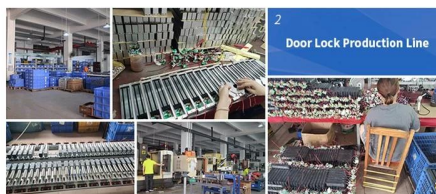
Best After-  
Sales Service

## OUR FACTORY



### Access Control and RFID Reader Production Line:

- Monthly production quantity is up to 50,000pcs, We are Provides OEM&ODM services including product research and development, LOGO printing, customized.etc



### Door Lock Production Line

### Electromagnetic lock & Smart Door Lock Production Line :

- Monthly production quantity is up to 100,000pcs ,
- Our factory is built with modern manufacture environment, facilities, equipment and professional operation technicians.
- Goldbridge Provides OEM&ODM services including product research and development, LOGO printing and product box customized.



### RFID & NFC Cards & Tags Production Line :

- RFID Tag, Wristband, Keyfob: 11,000,000pcs (monthly output)
- Four Production Lines For Smart Card, PVC Card, Prelam Sheet: 20,000,000pcs (monthly output)
- Goldbridge Provides OEM&ODM services for LOGO printing, development, customized.

## ADVANTAGE



### WHY CHOOSE US?

- FAST DELIVERY** Faster delivery by air by express. (DHL, UPS or Fedex)
- LONG HISTORY** 20 years experience in RFID & Access Control industry
- OEM ACCEPTABLE** 20 years OEM&ODM experience for 1000 + VIP client from US and Europe
- HIGH QUALITY** Design and manufacture high quality products with 30 R&D; engineers.

## APPLICATION

Bus, supermarket, school, government, hospital, factory



## CERTIFICATE



