
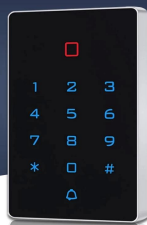





Access Controller

Hot Selling Products

			
Biometric AI Face Recognition Temperature Measurement	Time Attendance And Door Access Control	Tuya Touch Keypad Access Control	WG 26 Touch Access Control
			
Standalone Access Control	Keypad Access Control	Support 1000 user cards unlock with RFID key card, or password, or RFID card+password Used with Rainproof Cover, can be installed outside. RFID Cards Password Unlock RFID Cards+Password Unlock Waterproof Access Control	Keypad Access Control
			
Metal Access Control	WiFi Access Control	Magnetic Lock Control System Kit	Tuya Wifi Biometric Fingerprint Loc

Access Controller

> Manufacturer Distributor Wholesale Access Control System :

Include : **Stainless steel special button electric bolt lock for electronic key control door locks set for access control systems**



Product Description

Lock body size

Note: The dimensions are measured manually, with slight errors.
Please refer to the actual product. Unit: MM



Accessory size

Note: The dimensions are measured manually, with slight errors.
Please refer to the actual product. Unit: MM



Stainless steel material

Durable, moisture-resistant,
and less prone to rusting



Stainless steel



Difference between single head/double head locks

Single head lock uses a key to unlock the door, and the exit button opens the door. Double lock doors use keys for entry and exit, and buttons can also be used to open the door when leaving.



Stainless steel button switch



Pure copper lock core design



Pure copper lock head design

Key unlocking, made of pure copper material,
Impact resistance and wear resistance

Cu

Stainless steel

Product Details

QUALITY DETAILS



Two materials available

Stainless steel/painted version



Stainless steel
version

Baking paint style



Mechanical key

Each lock is equipped with three keys

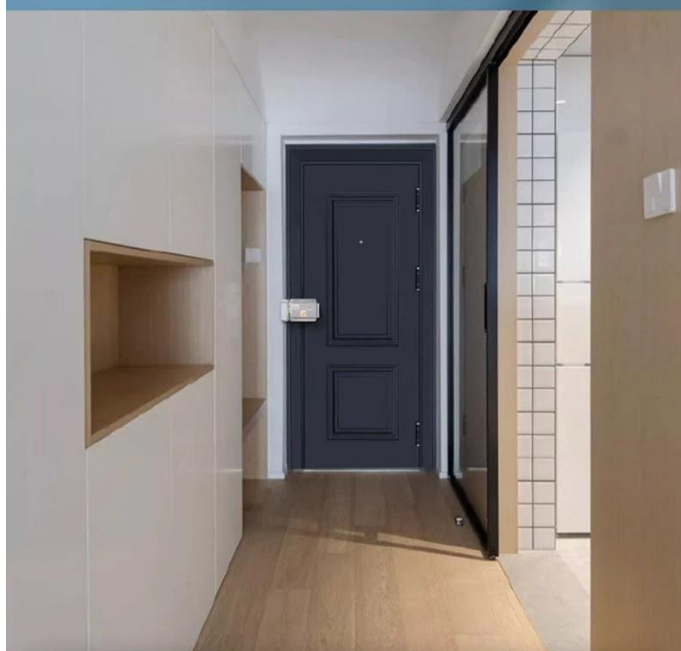
Powerful motor

Short unlocking time without jamming



Applicable scope

Suitable for wooden doors, iron doors, metal doors, etc., widely used.



Iron Gate



Wooden door



Metal doors



Installation instructions

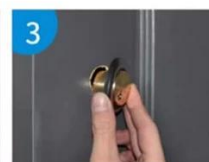
INSTALLATION METHOD



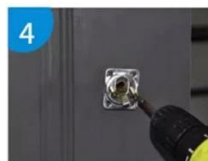
1 Cut the lock cylinder to a suitable length according to the thickness of the door (suitable for door thickness of 30mm-55mm)



2 Drill circular holes (26.5mm-49mm) according to the size of the lock head outdoors



3 First place the front lock head into the decorative ring, and then insert both into the circular hole together



4 Install a three eye board and bamboo screw at the corresponding position indoors



5 Install the rear cover plate at the corresponding hole position and fix the four corners with screws



6 Install the front cover plate and secure it with screws. Also, secure the small shell with screws and complete the installation

Left/Right Opening Instructions

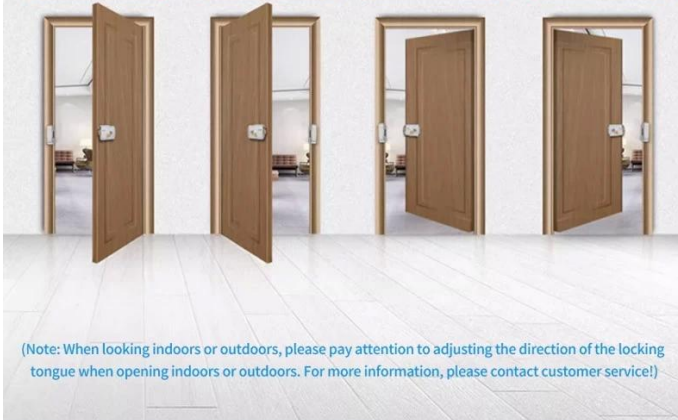
Entry key unlock exit button unlock

Inner right opening

Inner left opening

Outer right opening

Outer left opening



Indoor button unlocking

One click to open, convenient and fast



Connect to access control for use

Connected to 220V



Stainless steel version

Single head left opening
(Outdoor key to open the door;
indoor button to open the door)
Weight: 1.3kg



Double head left opening
(Outdoor key to open the door;
indoor button/key to open the door)
Weight: 1.3kg



Single head right opening payment
(Outdoor key to open the door;
indoor button to open the door)
Weight: 1.3kg

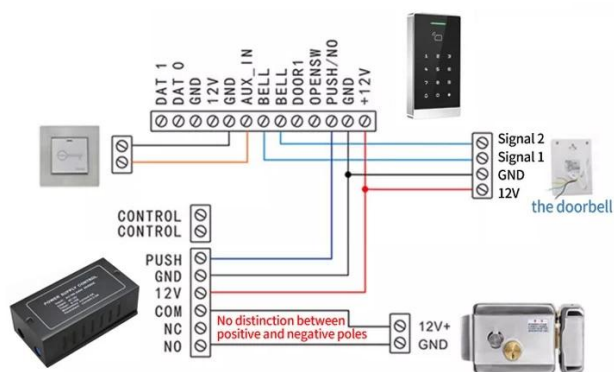


Double head right opening style
(Outdoor key to open the door;
indoor button/key to open the door)
Weight: 1.3kg



Electric control lock wiring diagram

Kind reminder: This link only sells electronic locks. Customers who need other accessories in the wiring diagram should contact customer service to purchase



Note: The power controller needs to be connected to 220V, and other accessories can be connected with a network cable

Product Application



Personal home



Community access



Hotel PMS



Long-term rental management



Corporate Services



School office

Our Advantages



TRUE FACTORY

Professional manufacturer that covering an area of more than 8000 square meters



ONE-STOP

We emphasize providing customers with a full range of door solutions.



OEM & ODM

We can also provide OEM or ODM services and customize new products according to customer needs



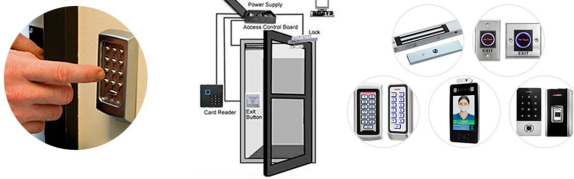
QUALITY GUARANTEE

Our products have passed the Ma certification of the Ministry of public security of China and the CE certification of the European Union



Related Products

Complete Door Access Control Solution Provider



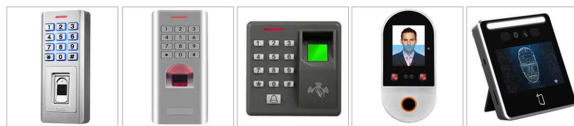
Hot Selling Equipments

BEST SELLERS

Standalone Fingerprint & RFID Outdoor Waterproof Access Controller



ACM-209E ACM-209V ACM-209H ACM-210E ACM-9800

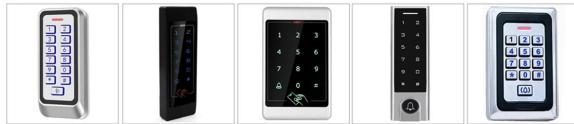


ACM-209D ACM-209F ACM-851 ACM-TM07 ACM-TM05
Face Recognition Face Recognition

Standalone Waterproof Metal RFID Access Control



ACM-211A ACM-212A ACM-208A ACM-210A ACM-208B



ACM-208C ACM-A65 ACM-A55 ACM-210F ACM-209A

Standalone Waterproof Touch Screen /Keypad RFID Access Controller



ACM-230K ACM-230T ACM-223 ACM-225 ACM-227



ACM-226 ACM-301C ACM-301D ACM-212 ACM-212C

Touch Screen Standalone Waterproof Metal RFID Access Controller



ACM-A40 ACM-A50 ACM-A10 ACM-A20 ACM-A30



ACM-A60 ACM-A80 ACM-A88 ACM-A21 ACM-A51

Company Information

20⁺ YEARS EXPERIENCE OEM & ODM

ACCESS CONTROL SYSTEMS ONE STOP SOLUTION PROVIDER

Goldbridge is Top 10 China Manufacture On Alibaba, Specializes In Provide Kinds Of RFID/NFC Cards, FID Tags, RFID Card Reader, UHF Reader, Access Control System, Electromagnetic Locks, etc Since 1999



Customized
Services



Quality
Assurance



Fast
Delivery



Best After-
Sales Service

OUR FACTORY



Access Control and RFID Reader Production Line:

- Monthly production quantity is up to 50,000pcs, We are Provides OEM&ODM services including product research and development, LOGO printing, customized.etc



Door Lock Production Line

Electromagnetic lock & Smart Door Lock Production Line :

- Monthly production quantity is up to 100,000pcs,
- Our factory is built with modern manufacture environment, facilities, equipment and professional operation technicians.
- Goldbridge Provides OEM&ODM services including product research and development, LOGO printing and product box customized.



RFID & NFC Cards & Tags Production Line :

- RFID Tag, Wristband, Keyfob: 11,000,000pcs (monthly output)
- Four Production Lines For Smart Card, PVC Card, Prelam Sheet: 20,000,000pcs (monthly output)
- Goldbridge Provides OEM&ODM services for LOGO printing, development, customized.

ADVANTAGE



WHY CHOOSE US?

- 1 FAST DELIVERY** Faster delivery by air by express. (DHL, UPS or Fedex)
- 2 LONG HISTORY** 20 years experience in RFID & Access Control industry
- 3 OEM ACCEPTABLE** 20 years OEM&ODM experience for 1000 + VIP client from US and Europe
- 4 HIGH QUALITY** Design and manufacture high quality products with 30 R&D; engineers.

APPLICATION

Bus, supermarket, school, government, hospital, factory



CERTIFICATE



PRODUCT CATEGORY

RFID / NFC SMART CARD

Be customized according to you need

Fit for systems of transport, E-payment, Access Control, Event, Loyalty, ect.

[View More](#)



ACCESS CONTROL SYSTEM

Security for All: Network Access Control Board ,Standalone Access Controller, Biometric Access Control, T&A time attendance, Facial Access Control

[View More](#)



RFID & LONG RANGE UHF READER

20+ Years of professional Experience in production of rfid uhf hardware

- UHF desktop reader writer,
- UHF integrated reader,
- UHF R2000 fixed reader,

[View More](#)



ELECTRONMAGNETIC LOCK

Professional Electric Locks Manufacturer In China

Electromagnetic lock with OEM & ODM since 1999 60KG /110KG /180KG /280KG /350KG /500KG

[View More](#)



FAQ

Q1 How can I place an order?

A1 Click start to order or list your requirement to us by email. Then we will send the offer to you ASAP, after the order confirmed, we will arrange production ASAP.

Q2 What about the payment and shipment?

A3 T/T , Paypal, Western Union etc.
You can choose your agent or via our agent by sea, air or express (DHL,FedEx, TNT UPS etc.)

Q4 How can I get a sample to check your quality?

A4 We could provide the sample to you, pls check the sample cost and freight cost with us.

Q5 How long can I expect to get the goods?

A5 It depends on the quantity and shipping way. You can check with us before ordered.

Q6 Can your products be customized?

A6 Almost all of our products are customized , including the material, size, thickness and printing. OEM orders are highly welcome.

[Contact Us](#)



[BACK TO HOMEPAGE >](#)

