

## Overview

### Quick Details

Special Time & Attendance  
Features:

Place of Origin: Guangdong, China

Brand Name: ACM

Model Number: ACM-WEG01

Product name: One Doors Access Control Board Door Access Control  
Panel

Card Capacity: 20000

Communication:Wiegand

Transaction 100000  
Capacity:

Indicator: Color LED Indicator

Panel size: 160\*106mm

Communication TCP/IP, Wiegand 26 , Wiegand 34  
Protocol:

Weight: 0.5kg

Power supply: DC 12V

Keyword: Access Control Solution System

Certification: CE

### Packaging & Delivery

Selling Units: Single item

Single package 20X15X10 cm  
size:

Single gross 0.600 kg  
weight:

Package Type:  
one piece in one carton, 50 pieces in one carton

Picture  
Example:



Lead Time:

Quantity (Units)

Estimated Quantity

## Product Description



## **Entry Door Security System Wiegand Solution Controller Board TCP IP RFID Network One Door Access Control Panel**

This access control board's software provides numerous access control and alarm monitoring features: expiry date for clubs, automatic activation, time zones, supervision, anti-passback, activity reports... Each alarm input is programmable: operating mode (NO or NC), time zones, local reflex (activation of outputs according to input status). Specific alarms are triggered according to the number of unsuccessful attempts, the time limit for door closing (door alarm), the duress code...Whenever required, the data stored in the controllers is transferred to the computer and activity reports are printed. Each controller works independently and keeps its own database.

P  
a  
d  
d  
m  
e  
t  
e  
n  
D  
a  
s  
e  
t  
e  
p  
t  
i  
o  
n  
M  
G  
d  
e  
l  
U  
s  
θ  
r  
E  
y  
θ  
n  
t  
B  
u  
f  
f  
e  
r  
D  
G  
w  
e  
6  
V  
C  
h  
4  
r  
4  
W  
t  
R  
a  
t  
e  
d  
M  
a  
x  
·  
1  
A

Rea  
a  
(1  
2  
6  
B  
b  
r  
W  
i  
e  
g  
a  
n  
d  
,  
8  
b  
i  
t  
B  
u  
r  
s  
t  
f  
o  
r  
P  
I  
N  
)  
R  
S  
an  
in  
T  
C  
R  
t  
I  
B  
n

**B**  
**8**  
**u**  
**4**  
**R**  
**p**  
**s**  
**é**  
**R**  
**e**  
**c**  
**o**  
**m**  
**m**  
**e**  
**n**  
**d**  
**e**  
**d**  
**)**  
**/**  
**9**  
**6**  
**b**  
**p**  
**s**  
**,**  
**1**  
**9**  
**,**  
**2**  
**b**  
**p**  
**s**  
**,**  
**5**  
**7**  
**,**  
**6**  
**b**  
**p**  
**s**  
**(**  
**s**  
**e**  
**l**  
**e**  
**c**  
**t**  
**a**  
**b**  
**l**  
**e**  
**)**

6  
a  
p  
(i  
E  
F  
b  
r  
B  
u  
t  
t  
o  
n  
#  
1  
,  
E  
x  
i  
t  
B  
u  
t  
t  
o  
n  
#  
2  
,  
D  
o  
o  
r  
S  
e  
n  
s  
o  
r  
#  
1  
,  
D  
o  
o  
r  
S  
e  
n  
s  
o  
r  
#  
2  
,  
A  
u  
x  
#  
1  
,  
A  
u  
x  
#  
2  
)

0  
a  
a  
p  
2  
F  
0  
R  
M  
t  
C  
R  
e  
l  
a  
y  
O  
u  
t  
p  
u  
t  
,  
S  
P  
D  
T  
5  
A  
@  
3  
6  
V  
D  
C  
/  
8  
A  
@  
3  
V  
A  
C  
)  
2  
e  
a  
(  
2  
A  
u  
x  
F  
O  
R  
M  
-  
C  
R  
e  
l  
a  
y  
O  
u  
t  
p  
u  
t  
,  
S  
P  
D  
T  
2  
A  
@  
3  
V  
D  
C  
)



Y  
E  
D  
I  
h  
E  
D  
c  
a  
d  
b  
c  
a  
t  
i  
o  
n  
f  
o  
r  
c  
o  
m  
m  
u  
n  
i  
c  
a  
t  
i  
o  
n  
,  
p  
o  
w  
e  
r  
,  
s  
t  
a  
t  
u  
s  
a  
n  
d  
p  
u  
n  
c  
h  
c  
a  
r  
d  
O  
p  
e  
n  
B  
a  
C  
i  
n  
g  
T  
e  
m  
p  
e  
r  
a  
t  
u  
r  
e

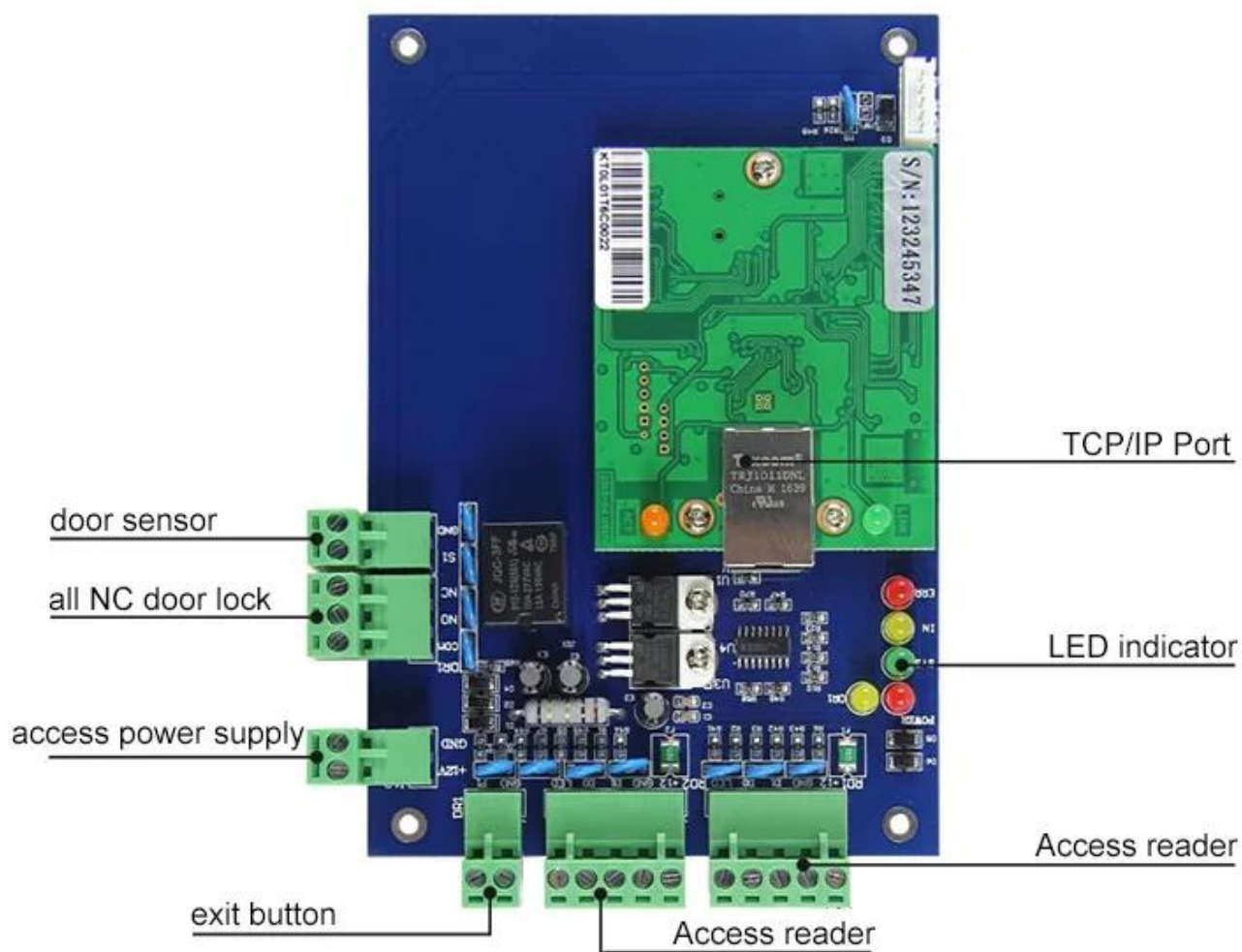
0  
%  
e  
o  
a  
%  
r  
a  
ly  
al  
u  
in  
v  
d  
h  
u  
yn  
i  
d  
i  
t  
y  
n  
o  
n  
-  
c  
o  
n  
d  
e  
n  
s  
i  
n  
g

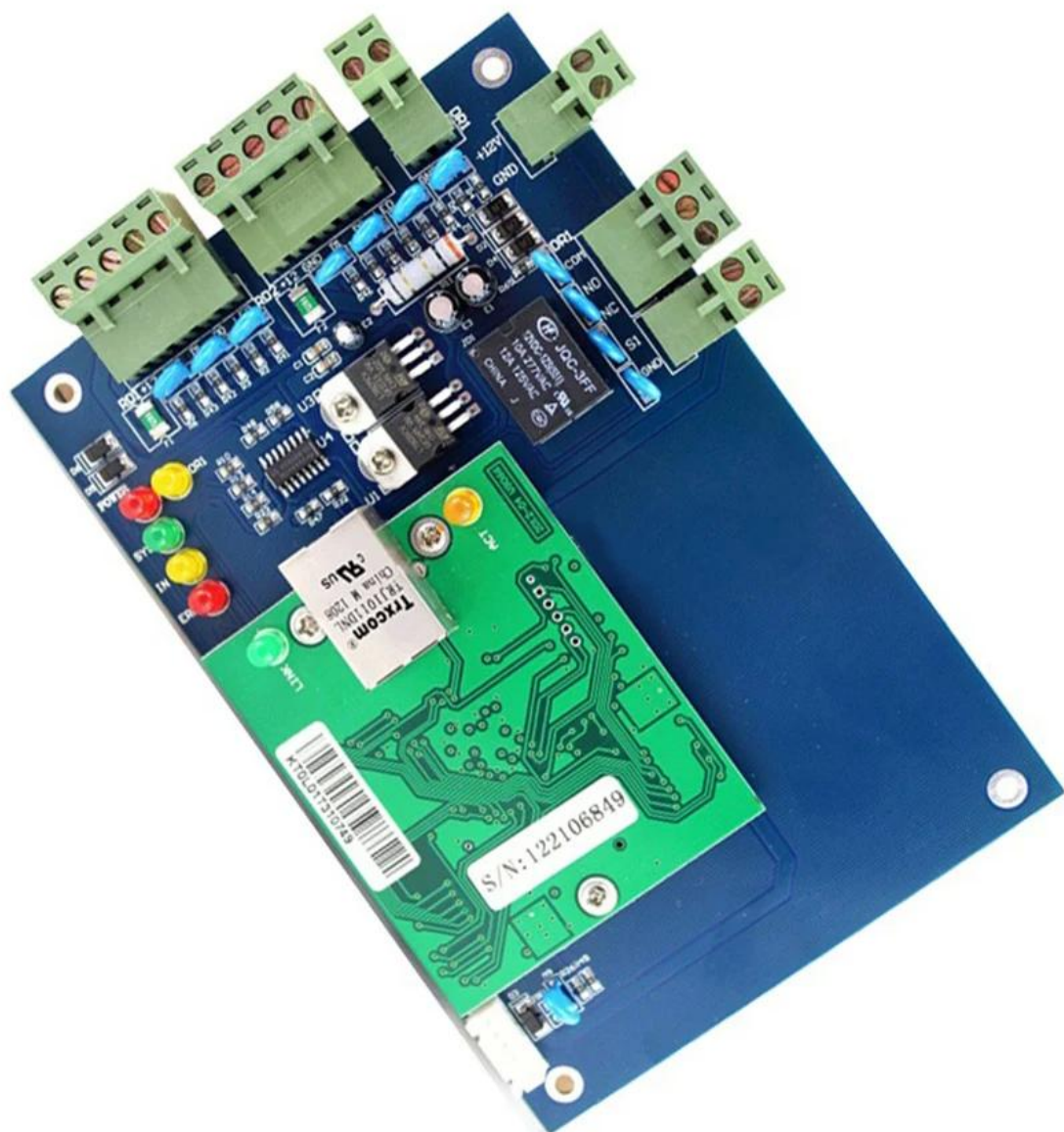
2  
1  
h  
e  
W  
s  
f  
o  
n  
(  
H  
)\*  
W  
s  
m  
m  
g  
l  
e  
b  
o  
a  
r  
d  
)  
3  
4  
5  
(  
W  
)  
\*  
2  
7  
5  
(  
H  
)  
\*  
7  
(  
D  
)  
(  
w  
i  
t  
h  
p  
o  
w  
e  
r  
s  
u  
p  
p  
l  
y  
a  
n  
d  
m  
e  
t  
a  
l  
b  
o  
x  
)

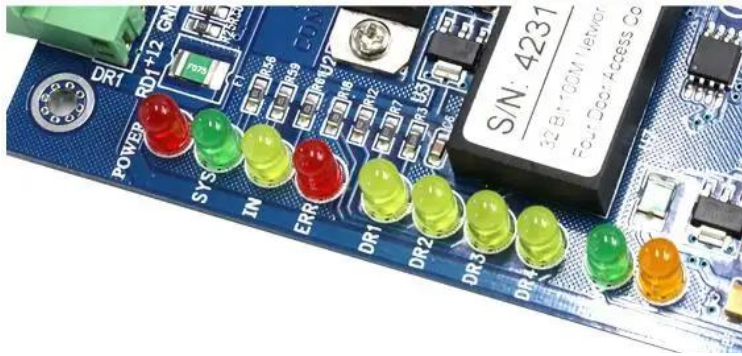
## Detailed Images

### Hardware:

1. Support 1 doors--Door with four readers and one push button interface.
2. With door sensor for door
3. Relay output for use with Normally Open and/or Normally Closed type locks.
4. Can Opeate off-line and real-time monitoring.
5. 100,000 events can be stored.(off-line), Can store unlimited events to PC.
6. 40,000 users can be registered.
7. Network communication using TCP/IP 10M/100M adaptive.
8. Expandable to use unlimited number of controllers.



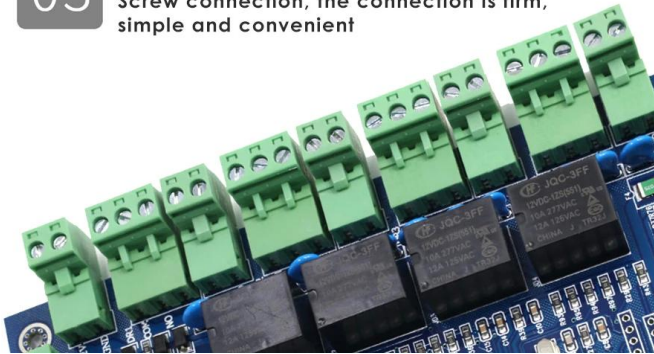




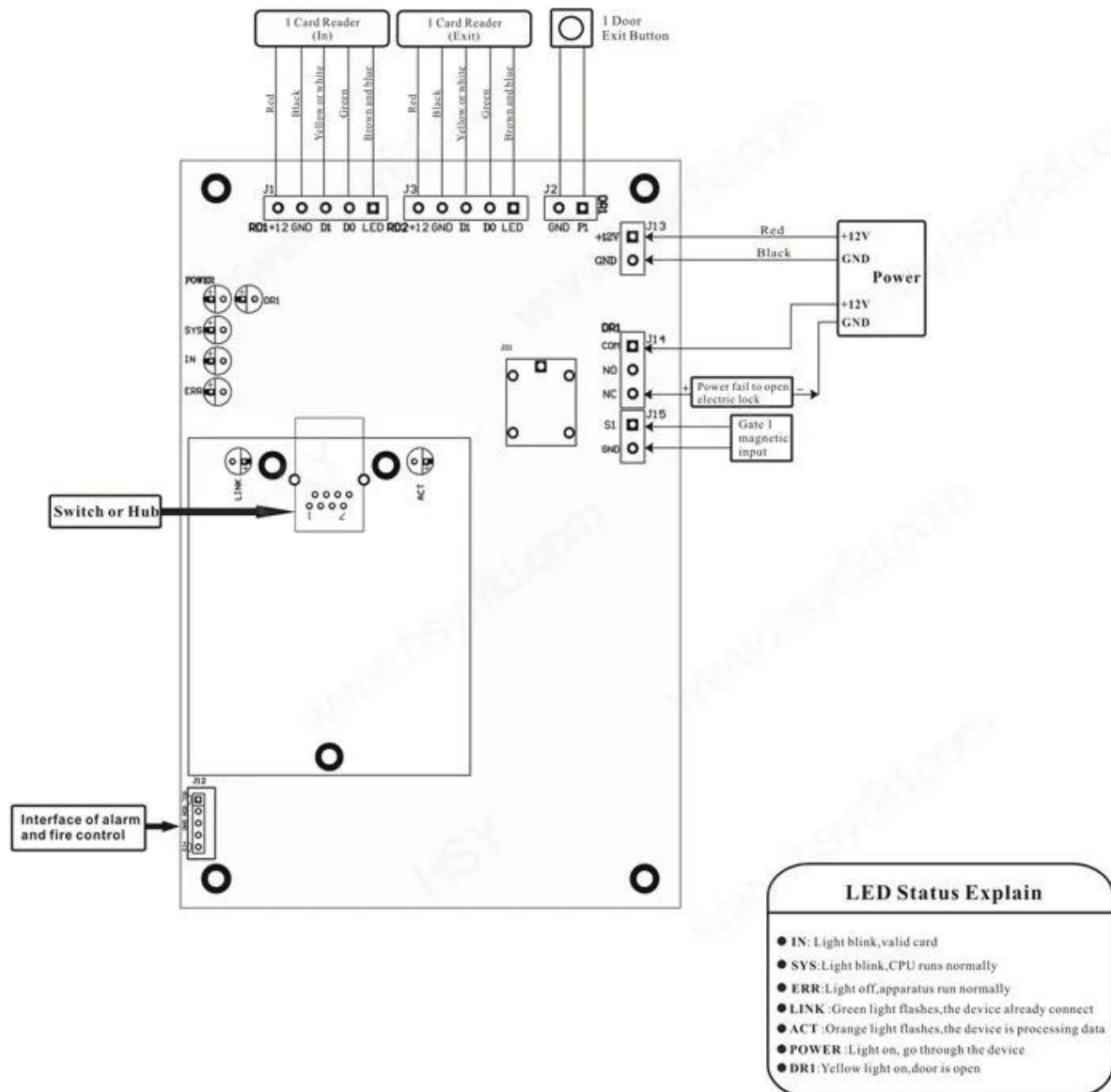
03

### Screw connection

Screw connection, the connection is firm, simple and convenient

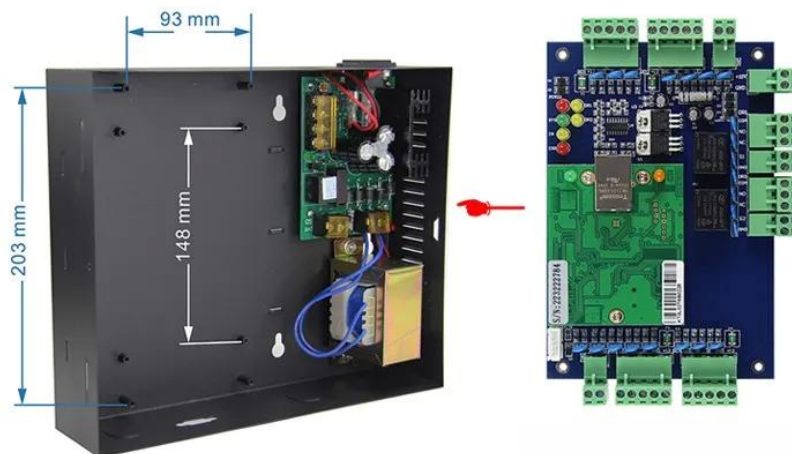
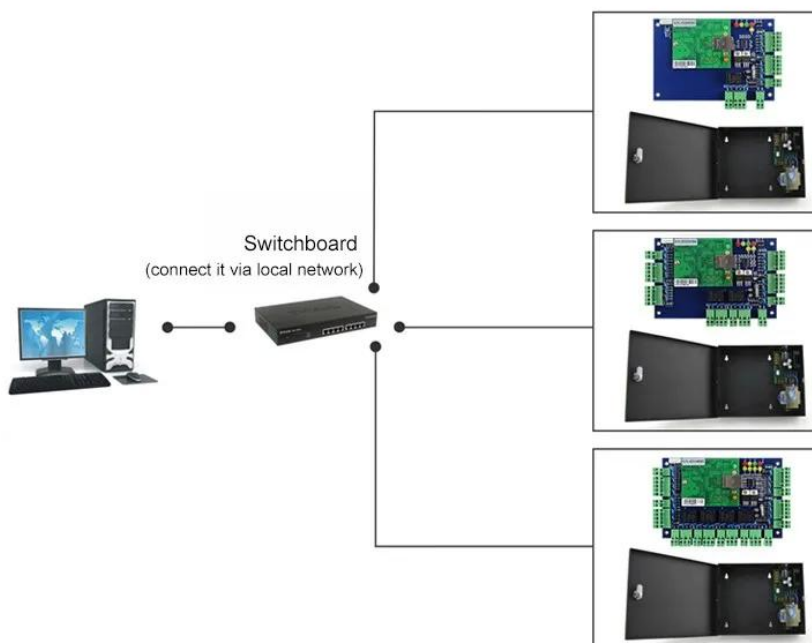


## Signal Door Access Controller Wiring Diagram (TCP/IP Communication)



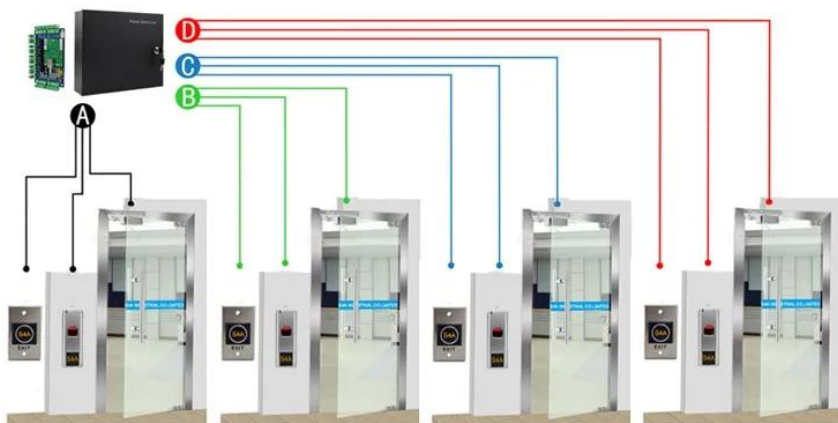
Application





#### Kindly remind:

All network control board must configure with access power supply.  
1 board for 1 power supply



ACM-WEG04

Four doors 1 way: Control 4doors (Enter by Swipe cards and Exit by Push button)

## Packing & Delivery

Every order we will check the quality firstly to ensure our customer get the best product. Our staff will pack it carefully to avoid the damage of transportation. We will ship every goods out as soon as possible.



### Shipping Way (Just for new customers reference )

We are one of the leading exporter of RFID products in China since 2000 years . With rich international trade experience we know the international shipping very well , We know which express or air/sea line is cheap and safe to your country . We can supply various certificate for you to clean your custom to such as CO , FTA , Form F , Form E ...Ect . We wil provide our professional suggestion for your shipping . EXW , FOB , FCT , CIF , CFR ...trade term are ok for us . We can be your reliable partner for products and shipping .

## Our Service

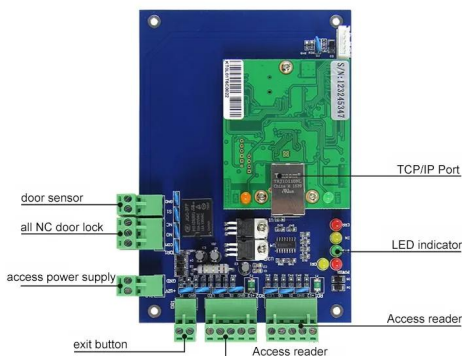
Your satisfactory is our goal.

- 1.Any inquires will be replied within 24 hours
2. Professional manufacturer and supplier, Welcome to visit our website and our factory
- 3.OEM/ODM Available
4. High quality, fashin desing, reasonable & competitive price, fast lead time
- 5.After-sale Service :  
A:All products will have been strictly quality checked in house before packing  
B: All products will be well packed before shipping  
C:All our products have 2-3 year warranty if the damage is not caused by human
6. Faster delivery : Around 1~ 5 days for sample order, 7~30 days for bulk order
7. Payment : You can pay for the order via : T/T, Western Union, Paypal, Ali trade assurance
- 8.Shipping: We have strong cooperation with DHL, FEDEX, TNT, UPS, EMS, Forwarder by SEA and By AIR,  
You also can choose your own shipping forwarder.Your satisfactory is our goal.

### Quality Warranty

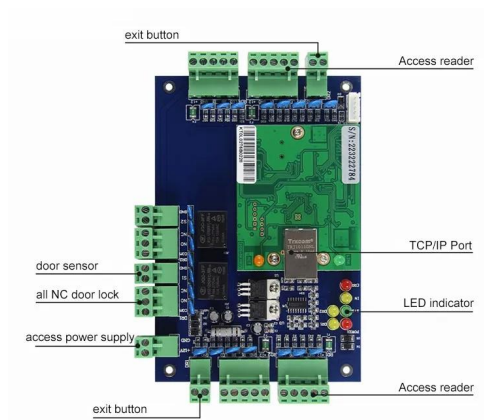
- 1.Warranty Service will be honored if the damage is not caused by human, ACM Goldbridge provides 2 years warranty for relative products.
- 2.On the contrary, ACM Goldbridge will charge extra if repair.
3. More information, please browse our service center.

## Related Products



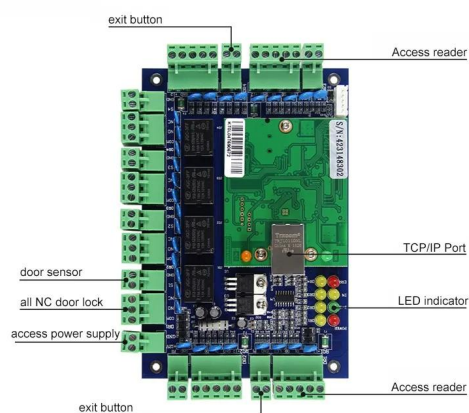
### **ACM-WEG01**

It can control 1 door.



## ACM-WEG02

It can control 2 door.




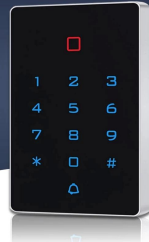


## ACM-WEG04

It can control 4 door.

## Access Controller

## Hot Selling Products

 <p>Biometric AI Face Recognition Temperature Measurement</p>	 <p>Time Attendance And Door Access Control</p>	 <p>Tuya Touch Keypad Access Control</p>	 <p>support Wiegand 26 input and output</p> <p>WG 26 Touch Access Control</p>
--	--	--	--

		<p>Support 1000 user cards unlock with RFID key card,or password,or RFID card+password Used with Rainproof Cover, can be installed outside.</p> 	
Standalone Access Control	Keypad Access Control	Waterproof Access Control	Keypad Access Control
			
Metal Access Control	WiFi Access Control	Magnetic Lock Control System Kit	Tuya Wifi Biometric Fingerprint Lock

## Related Products









## Complete Door Access Control Solution Provider



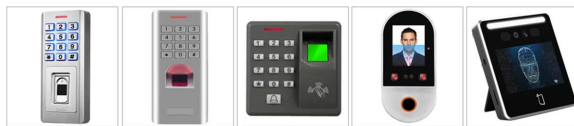
## Hot Selling Equipments

BEST SELLERS

### Standalone Fingerprint & RFID Outdoor Waterproof Access Controller



ACM-209E ACM-209V ACM-209H ACM-210E ACM-9800



ACM-209D ACM-209F ACM-851 ACM-TM07 ACM-TM05  
Face Recognition Face Recognition

### Standalone Waterproof Metal RFID Access Control



ACM-211A ACM-212A ACM-208A ACM-210A ACM-208B



ACM-208C ACM-A65 ACM-A55 ACM-210F ACM-209A

### Standalone Waterproof Touch Screen /Keypad RFID Access Controller



ACM-230K ACM-230T ACM-223 ACM-225 ACM-227



ACM-226 ACM-301C ACM-301D ACM-212 ACM-212C

### Touch Screen Standalone Waterproof Metal RFID Access Controller



ACM-A40 ACM-A50 ACM-A10 ACM-A20 ACM-A30



ACM-A60 ACM-A80 ACM-A88 ACM-A21 ACM-A51

**Company Information**

---



# 20<sup>+</sup> YEARS EXPERIENCE OEM & ODM

## ACCESS CONTROL SYSTEMS ONE STOP SOLUTION PROVIDER

Goldbridge is Top 10 China Manufacture On Alibaba, Specializes In Provide Kinds Of RFID/NFC Cards, FID Tags, RFID Card Reader, UHF Reader, Access Control System, Electromagnetic Locks, etc Since 1999



Customized  
Services



Quality  
Assurance



Fast  
Delivery



Best After-  
Sales Service

## OUR FACTORY



### Access Control and RFID Reader Production Line:

- Monthly production quantity is up to 50,000pcs, We are Provides OEM&ODM services including product research and development, LOGO printing, customized.etc



### Door Lock Production Line

### Electromagnetic lock & Smart Door Lock Production Line :

- Monthly production quantity is up to 100,000pcs,
- Our factory is built with modern manufacture environment, facilities, equipment and professional operation technicians.
- Goldbridge Provides OEM&ODM services including product research and development, LOGO printing and product box customized.



### RFID & NFC Cards & Tags Production Line :

- RFID Tag, Wristband, Keyfob: 11,000,000pcs (monthly output)
- Four Production Lines For Smart Card, PVC Card, Prelam Sheet: 20,000,000pcs (monthly output)
- Goldbridge Provides OEM&ODM services for LOGO printing, development, customized.

## ADVANTAGE



### WHY CHOOSE US?

- 1 FAST DELIVERY** Faster delivery by air by express. (DHL, UPS or Fedex)
- 2 LONG HISTORY** 20 years experience in RFID & Access Control industry
- 3 OEM ACCEPTABLE** 20 years OEM&ODM experience for 1000 + VIP client from US and Europe
- 4 HIGH QUALITY** Design and manufacture high quality products with 30 R&D; engineers.

## APPLICATION

Bus, supermarket, school, government, hospital, factory



## CERTIFICATE







## PRODUCT CATEGORY

### RFID / NFC SMART CARD

Be customized according to you need

Fit for systems of transport, E-payment, Access Control, Event, Loyalty, ect.

[View More](#)



### ACCESS CONTROL SYSTEM

Security for All: Network Access Control Board ,Standalone Access Controller, Biometric Access Control, T&A time attendance, Facial Access Control

[View More](#)



### RFID & LONG RANGE UHF READER

20+ Years of professional Experience in production of rfid uhf hardware

- UHF desktop reader writer,
- UHF integrated reader,
- UHF R2000 fixed reader,

[View More](#)



### ELECTRONMAGNETIC LOCK

Professional Electric Locks Manufacturer In China

Electromagnetic lock with OEM & ODM since 1999 60KG /110KG /180KG /280KG /350KG /500KG

[View More](#)



## FAQ

#### Q1 How can I place an order?

A1 Click start to order or list your requirement to us by email. Then we will send the offer to you ASAP, after the order confirmed, we will arrange production ASAP.

#### Q2 What about the payment and shipment?

A3 T/T , Paypal, Western Union etc.  
You can choose your agent or via our agent by sea, air or express (DHL,FedEx, TNT UPS etc.)

#### Q4 How can I get a sample to check your quality?

A4 We could provide the sample to you, pls check the sample cost and freight cost with us.

#### Q5 How long can I expect to get the goods?

A5 It depends on the quantity and shipping way. You can check with us before ordered.

#### Q6 Can your products be customized?

A6 Almost all of our products are customized , including the material, size, thickness and printing. OEM orders are highly welcome.



[Contact Us](#)



[BACK TO HOMEPAGE >](#)

