

## Product Description

### Wall Mount Standard Electromagnetic Door Holder

#### Overview

ACM-G140 is standard electromagnetic door holder with ultra low power consumption. There are 2 installation ways for wall and floor. It has signal output for central linkage and has reliable performance with special design avoiding residual magnetism. It is very suitable for all kinds of Fire exit and fireproof door.

#### Function

1. Pass 100Lbs super linear static thrust test
2. Double release modes: Power off & Manual button
3. Available for 12VDC /24VDC
4. Energy saving with ultra-low-power design
5. No residual magnetic design with stable performance
6. Passive switch signal output
7. Surface mounting or flush mounting for wall and floor
8. Available for glass door with bracket

#### Specifications

|                                      |  |
|--------------------------------------|--|
| Version                              | Fail-unlocked                                |
| Holding Force                        | 50kg(100Lbs)                                 |
| Standard Functions                   | Manual door release button                   |
| Lock Status Sensors                  | NO   |
| Rated Operating Voltage              | DC 12V or 24V (Adjustable)                   |
| Current consumption                  | 12V/180mA 24V/85mA                           |
| Surface finish                       | Paint and Zinc plated                        |
| Ambient temperature in °C            | -10°C - +55°C                                |
| Suitable for                         | All Kind of Single & Double Smokeproof Doors |
| Magnets Dimensions(L x W x D)        | 70L*43W*86H(mm)                              |
| Armature Plate Dimensions(L x W x D) | 65L*65W*53H(mm)                              |
| Weight in kg                         | 0.9kg  |
| CE-mark for building                 | YES  |
| Rohs-mark for building               | YES  |

#### Picture Show

Extended Wall Mount

# Door Holder

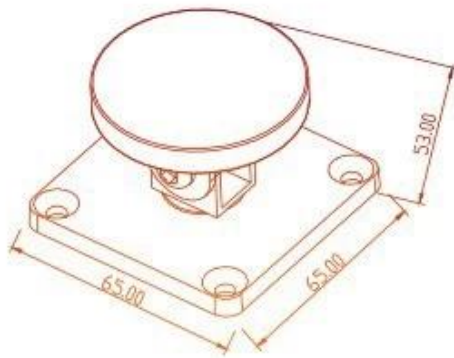
standard electromagnetic door holder  
with ultra low power consumption



*NP-G140 is standard electromagnetic door holder with ultra low power consumption. There are 2 installation ways for wall and floor. It has signal output for central linkage and has reliable performance with special design avoiding residual magnetism. It is very suitable for all kinds of Fire exit and fireproof door.*

## G140 Dimensions

Armature Plate Dimensions:  
65L\*65W\*53H(mm)



Magnets Dimensions:  
70L\*43W\*86H(mm)







### **Release mode:**

Fail-unlocked  
(the door holder is unlocked when the current is off)

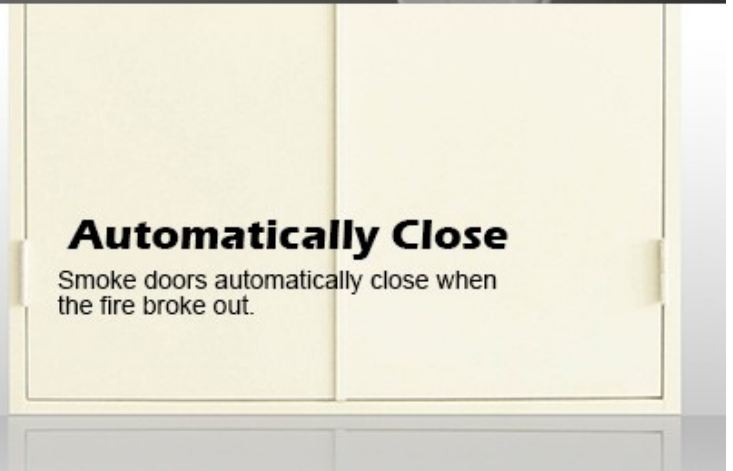
### **Manual Shut-Release Button**

With a manual shut-release button.



### **Automatically Close**

Smoke doors automatically close when the fire broke out.





## 100 lbs Super Linear Static

Pass 100 lbs super linear static thrust test.



## Available for 12VDC /24VDC

Rated Operating Voltage DC 12V or 24V (Adjustable)



## Energy saving with ultra-low-power design

Current consumption: 12V/180mA 24V/85mA





## **No Residual Magnetic Design With Stable Performance**

Professional magnet material, power failure  
no residual magnetism.

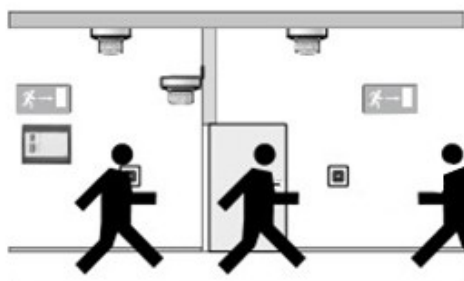
## **Reverse Current Protection**

Built-in reverse current protection devices. (MOV)





## Fire Fighting Mode



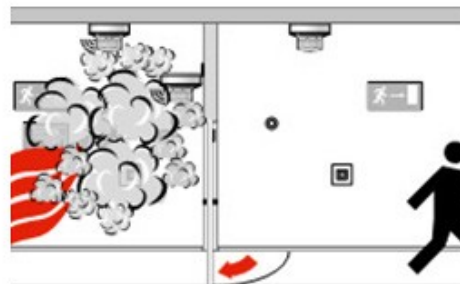
**Normal state, normally open mode.**



**Fire fighting status, personnel evacuation.**



**End evacuation, transfer of personnel and Cut off the door holder power supply, close the door.**



**After the door closed, successfully blocked the spread of fire.**



## Surface or Flush Mounting

Surface mounting or flush mounting for wall and floor.



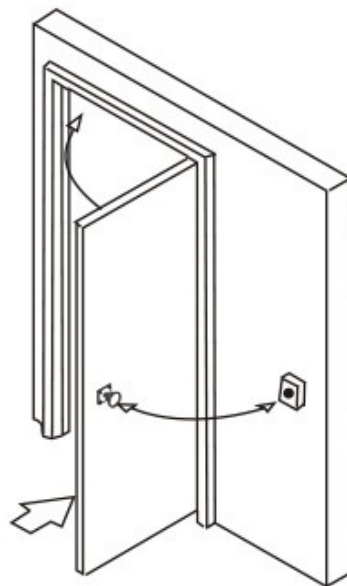
## Available for Glass Door

Available for glass door with bracket



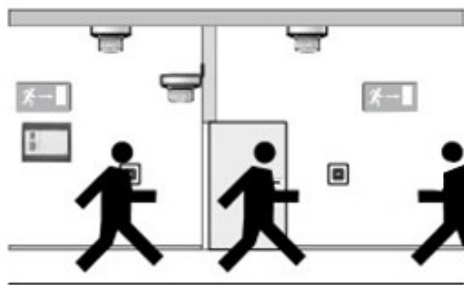
## **Installation Diagram**

Suitable for All Kind of  
Single & Double Smoke proof Doors.





# Fire Fighting Mode



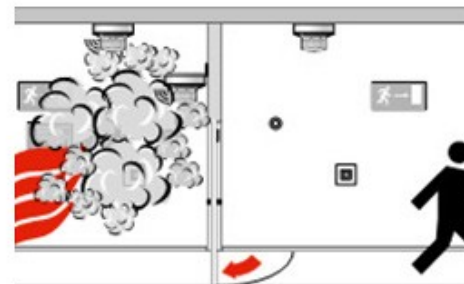
**Normal state, normally open mode.**



**Fire fighting status, personnel evacuation.**



**End evacuation, transfer of personnel and Cut off the door holder power supply, close the door.**



**After the door closed, successfully blocked the spread of fire.**

## Scope of Application



Company



Hospital



Hotels



Logistics



Port



Financial



Government



Factory



Aviation



School



PC Based Access Control Unit



Access Control



Proximity Access Card Reader



Proximity Card



Magnetic Lock



Electric Bolt



Access Control Power Supply



Exit Button

## Related Products



### RE:Access Control Power Supply

|   |  |  |  |  |
|---|--|--|--|--|
|  <p><b>NEW</b></p>                             | <p><b>ACM-Y802-3A</b><br/>Power Supply and door release exit button Dual Function<br/>AC110V-240VDC, 12V 3A</p>                      |  <p><b>M801B-3A /5A</b><br/>Access Control Door Power Supply<br/>Size: 190Lx85Wx80H(mm)<br/>AC110V-240VDC</p> |  <p><b>M806B-3A /5A</b><br/>Access Control Door Backup battery Power Supply<br/>Size: 190Lx85Wx80H(mm)<br/>AC110V-240VDC</p> |  |
| <p><b>ACM-DB07</b><br/>12V wired doorbell</p>  | <p><b>ACM-VB003</b><br/>WiFi Wireless Doorbell</p>  | <p><b>ACM-GSM405</b><br/>GSM Gate Opener /GSM Remote Switch</p>   | <p><b>ACM-Y803A</b><br/>Voltage: DC 12V /3A</p>   | <p><b>ACM-5A</b><br/>12V 5A door control system 12V 5amp access power supply with battery backup<br/>(Special For access control board use)<br/>Size: 279x234x67MM<br/>Input Voltage:110-240V<br/>Voltage: DC 12V /3A</p>  |






### RE:Door Loop / Door Closer

|   |   |   |   |  |   |
|---|---|---|---|--|---|
| <p><b>ACM401 Door Loop</b></p>  | <p><b>ACM601F 200mm Metal</b><br/><b>ACM601S 200mm stainless steel</b></p>  | <p><b>ACM-101 130mm Longer</b><br/><b>ACM-102 180mm Longer</b></p>  | <p><b>ACM-301 400mm Longer</b></p>  | <p><b>ACM-201 400mm Longer</b></p>  | <p><b>Door Closer</b><br/><b>ACM-M59 25-45KG</b><br/><b>ACM-M60 45-65KG</b><br/><b>ACM-M61 65-85KG</b></p>  |
|---|---|---|---|--|---|

### RE:Sensor and Siren For Access Control System

|  |   |  |   |   |   |   |
|--|---|--|---|---|---|---|
| <p><b>ACM-FP410A</b><br/>Drawer Cabinet Lock</p>  | <p><b>ACM-FP710A</b><br/>Fingerprint Bag Lock</p>  | <p><b>ACM-S408</b><br/>IR beam outdoor /indoor Motion Sensor</p>  | <p><b>Item: AS603</b><br/>Pieze Strobe Siren<br/>Operating voltage: 12VDC</p>  | <p><b>Item: AS31</b><br/>Operating distance: 16mm<br/>±5mm Switch output: NC</p>  | <p><b>Item: ACM-MD601</b><br/>Standard Wall Mount Door Holder<br/>Holding force: 60kg(120Lbs)</p>  | <p><b>Item: ACM-MD602</b><br/>Glass door Mount Door Holder with door signal<br/>Holding force: 60kg(120Lbs)</p>  |
|--|---|--|---|---|---|---|

### RE:Remote Control For Access Control System

|  |  |  |   |  |
|--|--|--|---|--|
| <p><b>Item: ACM-K19A/B</b><br/>Metal WIRELESS Remote Control</p>  | <p><b>Item: ACM-R402/404</b><br/>WIRELESS Remote Control</p>  | <p><b>Item: ACM-R403/405</b><br/>Wireless 433MHz RF Remote control</p>  | <p><b>Item: ACM-R407</b><br/>2 Channel AC/DC Remote receiver</p>  | <p><b>Item: ACM-R408/409</b><br/>Wireless 433MHz RF Remote control</p>  |
|--|--|--|---|--|

Whatsapp: +86-14554918707 , E-mail: lilyjiang\_06@163.com, sales@goldbridgesz.com ; www.goldbridgesz.com

For More Proudcts Price List and informations , Please contact our sales at sales@goldbridgesz.com, thank you !

## Packing & Delivery

Unit Type: piece

Package Weight: 0.3kg

Package Size: 10cm x 10cm x 8cm





Our Service



- 1, Any inquiries will be replied within 24 hours
- 2, Professional manufacturer and supplier, Welcome to visit our website and our factory
- 3, OEM/ODM Available
- 4, High quality, fashion design, reasonable & competitive price, fast lead time
- 5, After-sale Service :
  - 1), All products will have been strictly quality checked in house before packing
  - 2), All products will be well packed before shipping
  - 3), All our products have 2-3 year warranty if the damage is not caused by human
- 6, Faster delivery : Around 1~ 5 days for sample order, 7~30 days for bulk order
- 7, Payment : You can pay for the order via : T/T, Western Union, Paypal
- 8, Shipping: We have strong cooperation with DHL, FEDEX, TNT, UPS, EMS, Forwarder by SEA and By AIR, You also can choose your own shipping forwarder.

## FAQ

### **Q: 1. How can I place an order?**

A: Please list your requirement to us via Email. Then we will send the offer to you at earliest time, after order confirmation, we will arrange production ASAP.

### **Q: 2. What about the payment and shipment?**

A: T/T, Paypal, Western Union.

Clients can choose by sea, air or express (DHL, FedEx, TNT UPS etc.)

### **Q: 3. How can I get a sample to check your quality?**

A: We could provide free sample to you, and the freight cost paid by you.

### **Q: 4. How long can I expect to get the samples?**

A: It depends on the quantity. Normally 3-7 days for 5000pcs and 7-15 days for 100,000pcs

### **Q: 5. Can your products be customized?**

A: Almost all of your products are customized, including the material, size, thickness and printing. OEM orders are highly welcome.

### **Q: 6. Are you a trading company or factory?**

We are one of the biggest manufacturers of RFID cards/NFC tags/RFID keyfobs/RFID wristbands/RFID reader and access control products in China more than 20 years.

## **Company Information:**

# 20<sup>+</sup> YEARS EXPERIENCE OEM & ODM

## ACCESS CONTROL SYSTEMS ONE STOP SOLUTION PROVIDER

Goldbridge is Top 10 China Manufacture On Alibaba, Specializes In Provide Kinds Of RFID/NFC Cards, FID Tags, RFID Card Reader, UHF Reader, Access Control System, Electromagnetic Locks, etc Since 1999



Customized  
Services



Quality  
Assurance



Fast  
Delivery



Best After-  
Sales Service

## OUR FACTORY



### Access Control and RFID Reader Production Line:

- Monthly production quantity is up to 50,000pcs, We are Provides OEM&ODM services including product research and development, LOGO printing, customized etc



### Door Lock Production Line

### Electromagnetic lock & Smart Door Lock Production Line :

- Monthly production quantity is up to 100,000pcs,
- Our factory is built with modern manufacture environment, facilities, equipment and professional operation technicians.
- Goldbridge Provides OEM&ODM services including product research and development, LOGO printing and product box customized.



### RFID & NFC Cards & Tags Production Line :

- RFID Tag, Wristband, Keyfob: 11,000,000pcs (monthly output)
- Four Production Lines For Smart Card, PVC Card, Prelam Sheet: 20,000,000pcs (monthly output)
- Goldbridge Provides OEM&ODM services for LOGO printing, development, customized.

## ADVANTAGE



### WHY CHOOSE US?

- FAST DELIVERY** Faster delivery by air by express. (DHL, UPS or Fedex)
- LONG HISTORY** 20 years experience in RFID & Access Control industry
- OEM ACCEPTABLE** 20 years OEM&ODM experience for 1000 + VIP client from US and Europe
- HIGH QUALITY** Design and manufacture high quality products with 30 R&D; engineers.

## APPLICATION

Bus, supermarket, school, government, hospital, factory



## CERTIFICATE



