

Product Description



Wholesale 800kg 500000 cycles T type electric bolt

Y-700A (LED) is an Fail Safe electric bolt with all-metal construction.with 304 stainless steel solid bolt and 2000kg holding force. The Door signal is NC.It can operate at the temperature of 60 °C or -40 °C below zero based on the all-metal linkage parts. With the diversified design of durable magnetic valve, special photoelectric control system, ultra-low temperature and power consumption design, anti-intrusion and smart circuit

Specifications:

P
a
P
a
m
d
t
e
t
D
a
s
a
m
e
p
e
r
o
n
F
a
i
l
S
a
f
e
(
U
n
l
F
o
e
c
c
p
t
e
d
r
w
e
n
e
n
p
o
w
e
r
o
f
f
)

2
5
I
H
x
a
3
W
e
p
3
8
H
t
C
e
m
m
)
V
D
C
1
2
y
e
S
t
a
r
1
E
m
A
r
e
n
t
S
t
a
n
d
b
y
M
A
r
r
e
n
t

p
o
l
i
s
S
o
p
o
p
o
l
i
t
i
c
a
n
s
o
u
r
c
e
s
o
f
i
n
f
o
r
m
a
t
i
o
n
a
r
e
c
o
l
l
e
c
t
e
d
f
o
r
c
e
l
l
o
c
a
t
e
d
a
l
l
h
a
d
e
s
s
e
s
a
n
d
e
r
i
a
l

A
u
t
o
l
o
g
o
g
y
T
o
n
e
D
e
l
a
y
I
n
d
u
W
t
t
h
n
D
B
m
m
a
n
c
e

W
o
o
d
d
e
n
D
o
o
r
,
G
l
a
s
s
D
o
o
r
I
n
t
e
r
i
o
r
a
l
D
o
o
r
,
P
V
C
D
o
o
r
r

L
i
g
h
t
o
n
i
n
d
i
c
a
t
e
s
l
o
c
k
e
d
L
E
D
g
h
t
o
f
f
i
n
d
i
c
a
t
e
s
u
n
l
o
c
k
e
d

L
S
W
H
E
R
E
T
A
T
E
M
P
E
3
4
S
T
A
I
N
L
E
F
S
S
C
R
I
B
E
D
C
'E
W
I
A
T
T
E
R
I
A
W
F
I
N
I
S
H
I
N
G

We consider the following problem: Given a set of n points in the plane, $P = \{p_1, p_2, \dots, p_n\}$, and a set of m line segments, $S = \{s_1, s_2, \dots, s_m\}$, where each segment s_i is defined by its endpoints a_i, b_i , we want to find a subset of S that covers all points in P and has minimum total length.

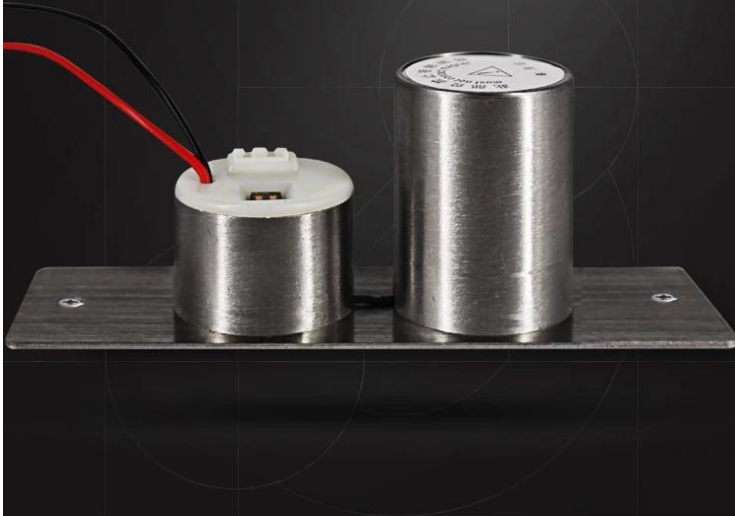
Product Advanatge

- * Photoelectricity Controlling,no machanical defect
- * Low Temperature, safe & Durable
- * Low Power, Environmental Protection
- * Special photoelectricity control,three steps current application
- * Superior Strength Aluminium Alloy,Solid Stainless Steel Bolt
- * The humanized design of Led helps to indicate the working status of lock
- * The applying of kirsite and Stainless Steel prevent the lock from high temperature,corrosion or damage
- * With complete accessories,available for any doors
- * Photoelectricity Control,Low Temperature
 - A:The Low Current is Changed immediately
 - B:When door frame doesn` t coincide with door leaf,door leaf against the bolt,then the electric bolt will start the low-power function to bring low temperature
 - C:The Photoelectricity Control Technology,prevent the machanical defect

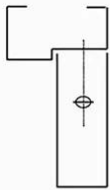
Detailed Images , OEM/ODM available

T TYPE BOLT LOCK

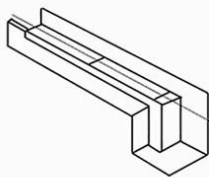
Fail-safe, Delay function



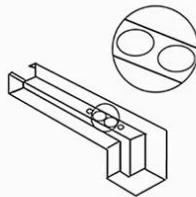
INSTALLATION STEPS



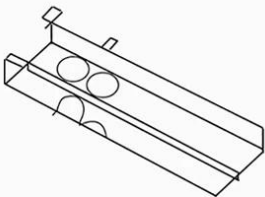
1. Door and door identification center point



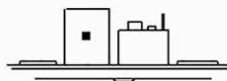
2. Place the hole on the sticker



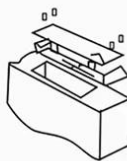
3. Use a hole opener to open the lock hole



4. Mount the mounting hole with the lock body and lock the screw



5. Aim the sensor plate at the lock body to make sure it can be locked



6. The sensor plate is fixed for testing

PRODUCT FEATURES



METAL LOCK BODY

Mini Size



ACM-Y100S 2PIN

ELECTRIC DROP BOLT LOCK
Standby 100MA / working
900MA Power to unlock, 2PIN

ACM-Y100S 5PIN

ELECTRIC DROP BOLT LOCK
Low temperature time-delay, feedback
signal Power to unlock, 5PIN

ACM-Y500A

Fail Safe Sturdiness Electronic
BoltW/Narrow DoorLock Size:
205x30x38mm



ACM-Y280

Surface mounted magnetic
lock(280kg/600lbs)

ACM-Y131

Stainless steel electronic Stripe
(NC/NO) For Wooden Door, Metal
Door,PVC Door

ACM-Y066

Intelligent Smart Lock (motor lock)
Lock size: 130x98x41mmWorking

Our Service

- 1, Any inquiries will be replied within 24 hours
- 2, Professional manufacturer and supplier, Welcome to visit our website and our factory
- 3, OEM/ODM Available
- 4, High quality, fashin desing, reasonable & competitive price, fast lead time
- 5, After-sale Service :
 - 1), All products will have been strictly quality checked in house before packing
 - 2), All products will be well packed before shipping
 - 3), All our products have 2-3 year warranty if the damage is not caused by human
- 6, Faster delivery : Around 1~ 5 days for sample order, 7~30 days for bulk order
- 7, Payment : You can pay for the order via : T/T, Western Union, Paypal.
- 8, Shipping: We have strong cooperation with DHL, FEDEX, TNT, UPS, EMS, Forwarder by SEA and By AIR, You also can choose your own shipping forwarder.

FAQ

Q: 1. How can I place an order?

A: Please list your requirement to us via email. Then we will send the offer to you at earliest time,after order confirmation, we will arrange production ASAP.

Q: 2.What about the payment and shipment?

A: Trade Assurance and T/T ,Paypal, Western Union.
Clients can choose by sea, air or express(DHL, FedEx, TNT UPS etc.)

Q: 3. How can i get a sample to check your quality?

A:We could provide free sample to you, and the freight cost payed by you.

Q:4. How long can I expect to get the samples?

A: It depends on the quantity. Normally 3-7 days for 5000pcs and 7-15 days for 100,000pcs

Q:5. Can your products be customized?

A: Almost all of your products are customized ,including the materia, size, thickness and printing. OEM orders are highly welcome.

Q:6.Are you a trading company or factory?

We are the one of the biggest manufacturer of RFID cards/NFC tags/RFID keybod /RFID wristband□rfid reader and access control products in China more than 20 years.