

Products Description

Products Description

ADoor exit button for access control system, waterproof touch exit butto

Feature:

- . No touch / Touch free Exit Sensor (Diffused Detection)
 - Optical / Infrared Technology
 - IP-55 Ingress Protection / SUS 304 Stainless steel Plate
 - User friendly (Healthy protection)
 - .. Free from contagious diseases spread
 - .. Detection range: 0.1 ~ 10 cm
 - Normally open/Normally close/Common relay output
 - Twin led indicators for sensor standby or approached :
- (1) Sensor Standby: BLUE LED ON

Details Images

Details Images



Whatsapp: +86-13554918707

E-mail: sales@goldbridgesz.com

Website: www.goldbridgesz.com

Waterproof Exit Button

Stainless steel panel /IP66 waterproof





Stainless Steel Door Release Button

Waterproof IP67

PH: +86-13554918707
E: sales@goldbridgesz.com
W: www.goldbridgesz.com



ACM-K819-A
115X40mm

ACM-K819-B
86X50mm

ACM-K819-C
115X70mm

ACM-K819-D
86X86mm

Power Supply: 12V-24DC
Output Contact: NO/NC/COM

Panel Material: 1.8mm Thick Stainless Steel
Mechanical Life: 500,000 tests

Operating temp: -20°C ~ +55°C(14-131°F)
Suitable Humidity: 0-95% (relative humidity)







www.goldbridgesz.com



A K841-A (115x40mm) **B** K841-B (86x50mm)
C K841-C (115x70mm) **D** K841-D (86x86mm)

Touchless
Infrared Sensor Exit Button

Power Supply: 12V-24DC
Output Contact: NO/NC/COM
Panel Material: 1.8mm Thick Stainless Steel
Mechanical Life: 500,000 tests
Operating temp: -20°C ~ +55°C(14-131°F)
Suitable Humidity: 0-95% (relative humidity)

PH: +86-13554918707
E: sales@goldbridgesz.com

Product Paramenters

Model Number	ACM-K841
Product Name	NO Touch Exit Button Switch
Material	Stainless Steel
Product size	86*86mm
Power supply voltage	12VDC
Contact output	NO/NC/COM /LED
Maximum current	3A / 125-250VAC
Endurance test	100,000 times
Installation:	hollow door frame (concealed installation)
Packing parameters	100pcs/15kg/51*43*33cm/ctn

Products Detail

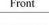
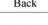



Touchless Exit Button Introduction

NO Touch Style Exit Button;
NO/NC/COM;
5-15cm induction distance;
Stainless steel panel/customizable;

► Features

- Wide Voltage DC 12-24V
- Sensitive Distance 5-15cm
- NO/NC/COM
- Standby Blue LED, Active Green LED
- Laser texture, Not discolor

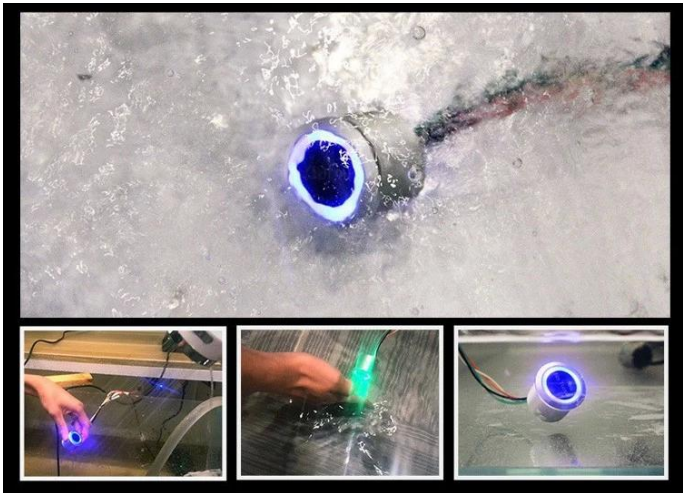
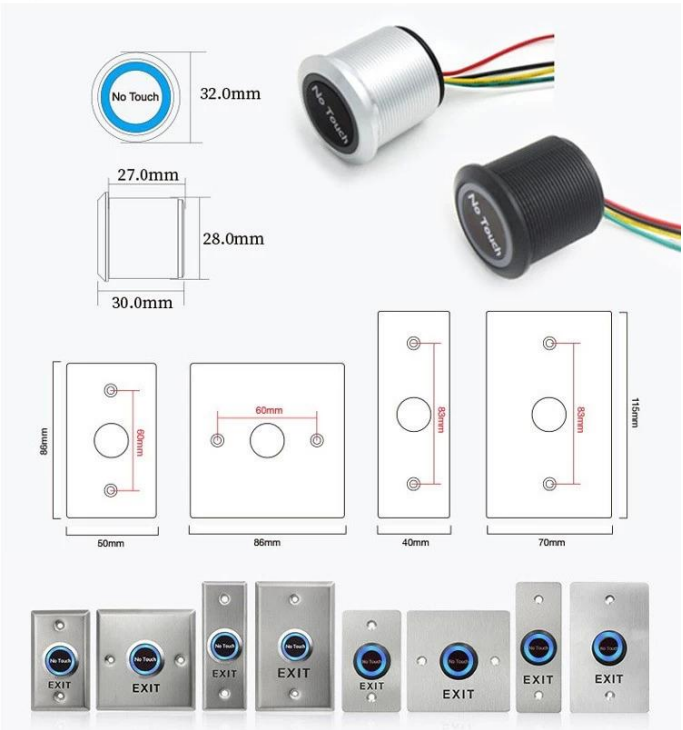
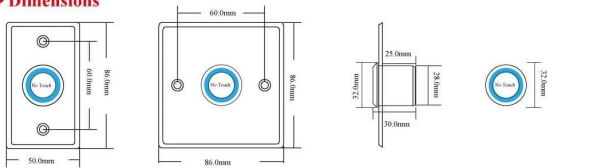


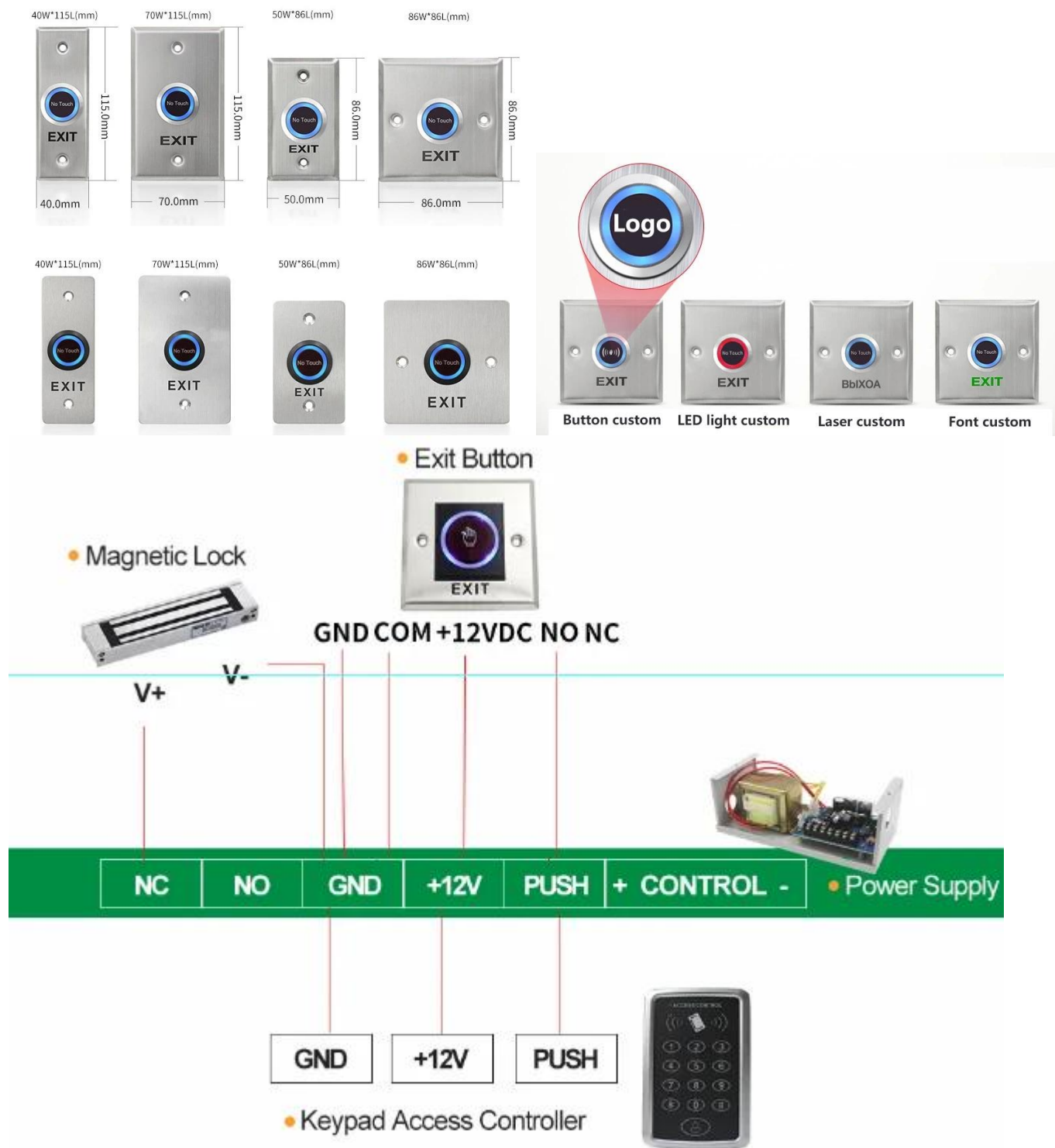
Model	ACM-K841-A		ACM-K841-B		Side
Size	86*50mm		86*86mm		
View	Front	Back	Front	Back	
Photos					

► Product Parameter

Model	ACM-K841-A	ACM-K841-B	Material	Stainless steel
Size(mm)	86L*50W*25H	86L*86W*25H	Panel logo	Customizable
Weight(KG)	0.08	0.1	Mechanical Life	500,000 Tested aging test qualified
Power Supply	DC12-24V		Accessories	Optional Back Box
Output Contact	NO/NC/COM		Operating Temp	-20°C~+55°C(-4~131°F)
Sensitive Distance	5-15CM		Operating humidity	0-95% (RH)
LED Indicator	Standby blue, Response green. (Customizable)		Package Quantity	1 PCS/box, 100 PCS/case.

► Dimensions





Recommend Products

Recommend Products

Locker Lock System

Hotel Door Lock System

Home Office Smart Lock System

Access Control System

Car Parking System

Related Products



EXIT BUTTON

Email: sales@goldbridgesz.com



K6A K6AL 91x28x20mm
K6D K6DL K6DW 115x70x25mm 115x70x25mm 115x70x25mm
K4A K4AL 86x50x33mm



K6B K6BL 86x86x38mm 86x86x38mm
K4B K4BL 86x86x33mm 86x86x33mm



K14E K14EL 115x40mm
K14F K14FL 115x70mm 115x70mm
K14A K13AL 115x40mm
K14 K14DL 115x70mm 115x70mm



K14B K14BL 86x50mm 86x50mm
K13B K13BL 86x86mm 86x86mm
K13BE 86x86mm



K13AB K13A 115x40mm 115x70mm
K13D K13BD 86x50mm 86x86mm
K14C K14CL 80x30x24mm 80x30x24mm



K15A K15AL 53x53x25mm 53x53x25mm
K15B K15C 53x53x25mm 53x53x25mm



K7A K7B 91x28mm 115x70mm
K8A K8BL 86x86x38mm 86x86x38mm
K4AC K4AD 86x86x38mm 86x86x38mm



K6AM K6BM 115x40mm 115x70mm
K6CM K6DM 86x50mm 86x86mm
K15BG K15BR 53x53x25mm 53x53x25mm



K14BR K14BG 80x30x25mm 80x30x25mm
M40 M70 115x40mm 115x70mm
M50 M86 86x50mm 86x86mm

TOUCH BUTTON

Email: sales@goldbridgesz.com



K9A K9B 86x86x20mm 86x50x20mm
K40A K40B K40C 86x86x18mm 86x86x18mm 86x40x18mm

NO TOUCH EXIT BUTTON



K2B K2A 86x86x35mm 115x70x25mm
K9C K10A 86x86x11.5mm 86x86x14mm



K201G K201 92x92x33mm 113x63x20mm
K406 K-WS 80x32x23mm 80x80x28mm



K505 K505W 86x86x14mm 86x86x14mm
K505MH K505MHW 86x86x14mm 86x86x14mm



K841A K841C 115x40mm 115x70mm
K841B K842A K843A 86x86mm 115x40mm 115x40mm

PLASTIC BUTTON

Email: sales@goldbridgesz.com



K1 K1-1 K1-2 K1-3 K11A 86x86x25mm 86x86x24mm 86x86x25mm 86x86x20mm 76x23x14mm



P86 P77 86x86x35mm 77x77x45mm
Rated Current: 40A, Power off: 20s delay

EMERGENCY DOOR RELEASE

Email: sales@goldbridgesz.com



K3R K3Y K3G K3W 86x86x50mm 86x86x50mm 86x86x50mm 86x86x50mm



K3RR K3RG K3 Transparent 86x86x50mm 86x86x50mm 87x87x60mm



K4G K4GB K4GL K4RG LED/Buzzer Red LED/Buzzer Green Without LED 90x93x45mm

Company Information

20⁺ YEARS EXPERIENCE

OEM & ODM

ACCESS CONTROL SYSTEMS ONE STOP SOLUTION PROVIDER

Goldbridge is Top 10 China Manufacture On Alibaba,
Specializes In Provide Kinds Of RFID/NFC Cards, FID Tags, RFID Card Reader,
UHF Reader, Access Control System, Electromagnetic Locks, etc Since 1999



Customized
Services



Quality
Assurance



Fast
Delivery



Best After-
Sales Service

ADVANTAGE



WHY CHOOSE US?

- 1 FAST DELIVERY** Faster delivery by air by express. (DHL, UPS or Fedex)
- 2 LONG HISTORY** 20 years experience in RFID & Access Control industry
- 3 OEM ACCEPTABLE** 20 years OEM&ODM experience for 1000 + VIP client from US and Europe
- 4 HIGH QUALITY** Design and manufacture high quality products with 30 R&D engineers.



Supplier's Company

OUR FACTORY



- **Access Control and RFID Reader Production Line:**
- Monthly production quantity is up to 50,000pcs , We are Provides OEM&ODM services including product research and development, LOGO printing, customized.etc



- **Electromagnetic lock & Smart Door Lock Production Line :**
- Monthly production quantity is up to 100,000pcs ,
- Our factory is built with modern manufacture environment, facilities, equipment and professional operation technicians.
- Goldbridge Provides OEM&ODM services including product research and development, LOGO printing and product box customized.



- **RFID & NFC Cards & Tags Production Line :**
- RFID Tag, Wristband, Keyfob: 11,000,000pcs (monthly output)
- Four Production Lines For Smart Card, PVC Card, Prelam Sheet: 20,000,000pcs (monthly output)
- Goldbridge Provides OEM&ODM services for LOGO printing, development, customized.

APPLICATION

Bus, supermarket,school, government, hospital, factory



CERTIFICATE



Access Control CE Access Control RoHS EM Lock EMC Certificate EM Lock RoHS Certificate



RFID Card Reader CE RFID Card Reader RoHS UHF Reader CE Certificate UHF Reader RoHS

PRODUCT CATEGORY

RFID / NFC SMART CARD

Be customized according to you need

Fit for systems of transport, E-payment, Access Control, Event, Loyalty, ect.

[View More](#)



ACCESS CONTROL SYSTEM

Security for All: Network Access Control Board ,Standalone Access Controller, Biometric Access Control, T&A time attendance, Facial Access Control

[View More](#)



RFID & LONG RANGE UHF READER

20+ Years of professional Experience in production of rfid uhf hardware

- UHF desktop reader writer,
- UHF integrated reader,
- UHF R2000 fixed reader,

[View More](#)



ELECTRONMAGNETIC LOCK

Professional Electric Locks Manufacturer In China

Electromagnetic lock with OEM & ODM since 1999 60KG /110KG /180KG /280KG /350KG /500KG

[View More](#)



FAQ

Q1 How can I place an order?

A1 Click start to order or list your requirement to us by email. Then we will send the offer to you ASAP, after the order confirmed, we will arrange production ASAP.

Q2 What about the payment and shipment?

A3 T/T , Paypal, Western Union etc.
You can choose your agent or via our agent by sea, air or express (DHL,FedEx, TNT UPS etc.)

Q4 How can I get a sample to check your quality?

A4 We could provide the sample to you, pls check the sample cost and freight cost with us.

Q5 How long can I expect to get the goods?

A5 It depends on the quantity and shipping way. You can check with us before ordered.

Q6 Can your products be customized?

A6 Almost all of our products are customized , including the material, size, thickness and printing. OEM orders are highly welcome.



[Contact Us](#)



[BACK TO HOMEPAGE >](#)

