

Details Images:

Wifi SDK IP Biometric AI Terminal Temperature Measurement
Face Recognition Machine Smart Temperature Measure Face
Recognition

Multi-person temperature screening access control machine

The body temperature detection on the surface of the human forehead can realize the simultaneous detection of multiple people, Simultaneous display of infrared display, faster measurement without waiting.

Free adjustment of lifting



Liftable face bracket, convenient for daily use, suitable for requirements Office buildings, schools, subway airports, industrial areas, residential areas, etc.



Temperature



Large screen



Mask



Face

Multiple

Alarm

SUPPORT THREE PEOPLE TO MEASURE TEMPERATURE AT THE SAME TIME

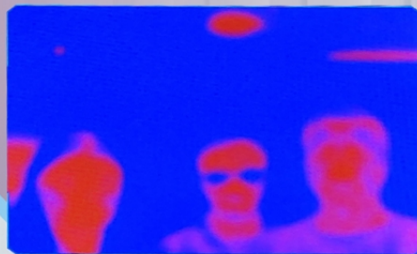
Contactless multi-person temperature measurement, widely used in most people's venues, multi-person temperature measurement broadcast, The frame rate of temperature measurement is as fast as 9-20FPS, realizing "sweep and pass" fast temperature measurement.



External temperature measuring head, accurate temperature measurement error 0.5 °C. Distance To 160CM, contactless face scanning temperature measurement is convenient, intelligent, efficient and fast.

THERMAL IMAGING REAL-TIME DISPLAY

Face recognition external temperature head temperature screening instrument, multi-person synchronous temperature screening
Accurate face recognition, intelligent voice AI broadcast, real-time thermal imaging display.



INTELLIGENT ULTRA-CLEAR CAMERA



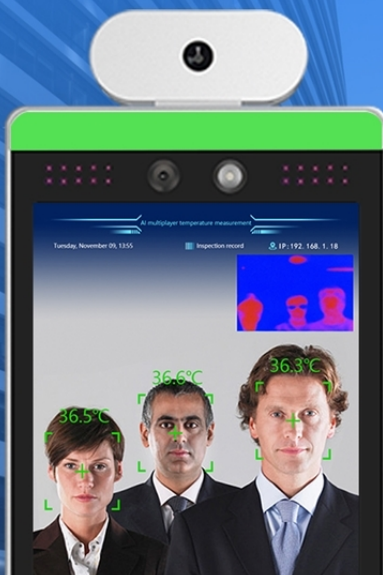
2 million color smart camera

1.3 million infrared camera

Built-in algorithm wide
dynamic backlighting, solid
Fixed focal length, automatic
exposure control, Bai Ping
Scale control, automatic gain,
and other intelligent adjustments.



Face recognition body temperature screening machine



Quick

AI multi-person rapid
temperature measurement

Guang

At the same time, 3 people
measure temperature

Quasi

Germany Imported
Temperature Measuring Head



Easy

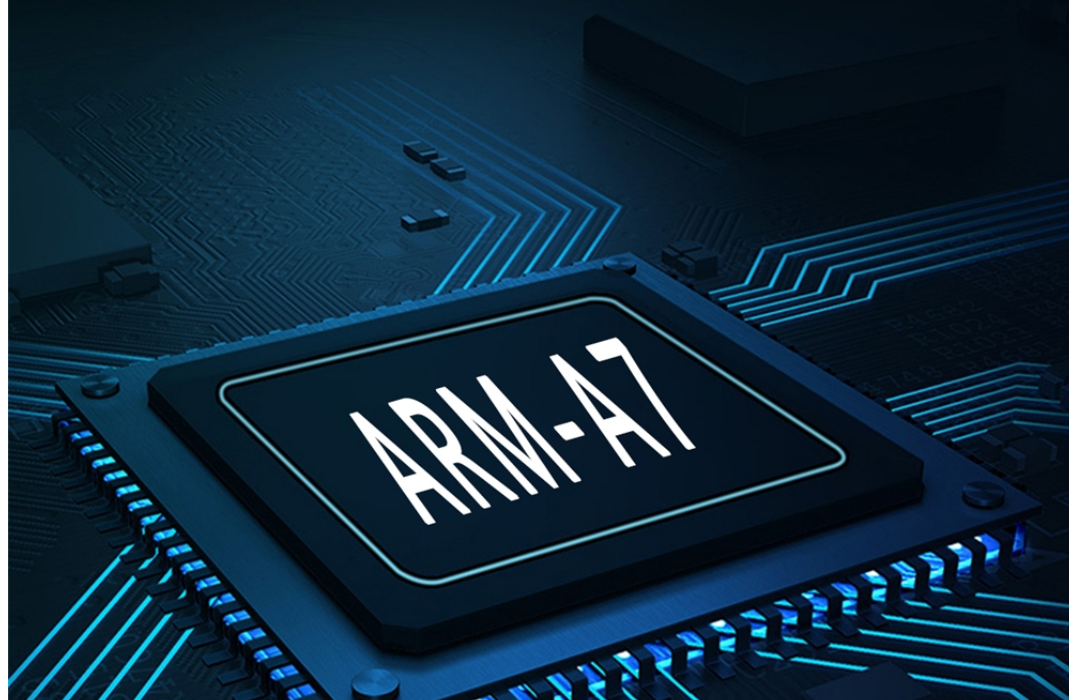
Power-on test
without debugging

Steady

LINUX system, high stability

UPGRADED SMART HIGH-END CHIP

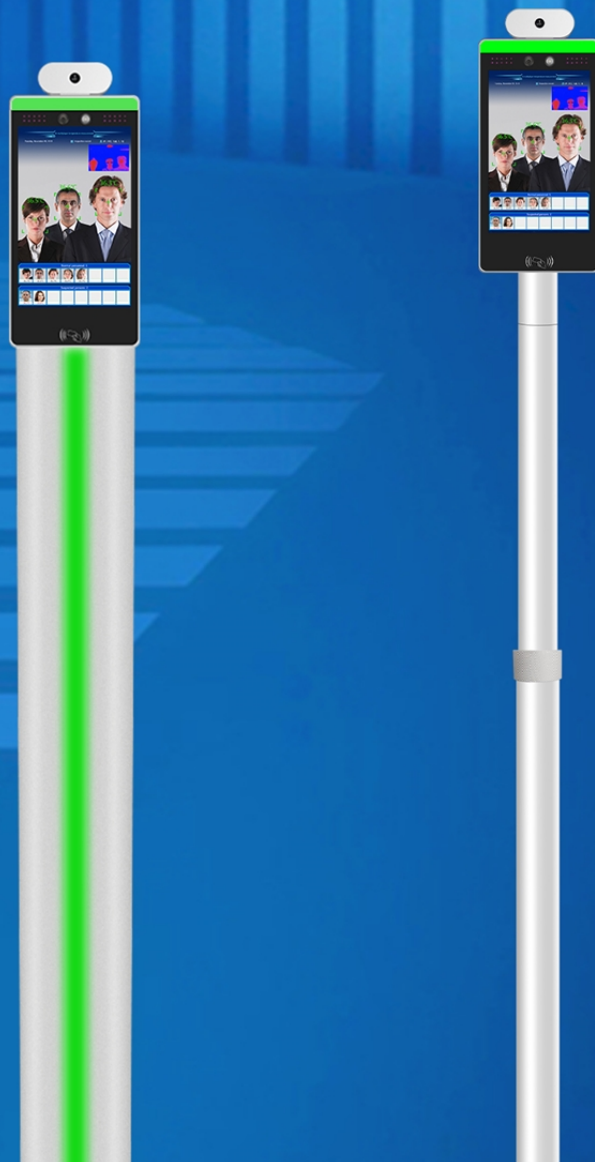
ARM-A7 intelligent chip computing, LINUX system,
no Caton, one step faster everywhere,
Ultra-fast computing power, temperature head frame rate can reach 9-20fps.

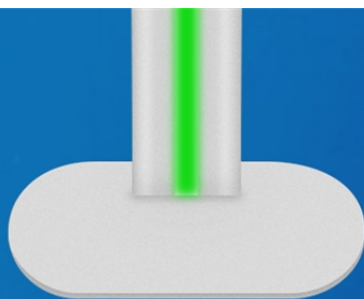




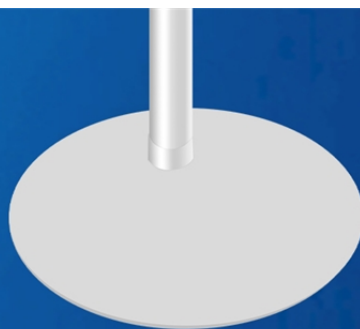
MULTIPLE INSTALLATION METHODS

It can be matched with a variety of brackets and furniture installation methods. Turn it on and use it, To save labor and time, to ensure the efficiency of body temperature screening





Two-color lamp column



Lifting bracket column



Multiple
installation methods



CNC aluminum alloy material



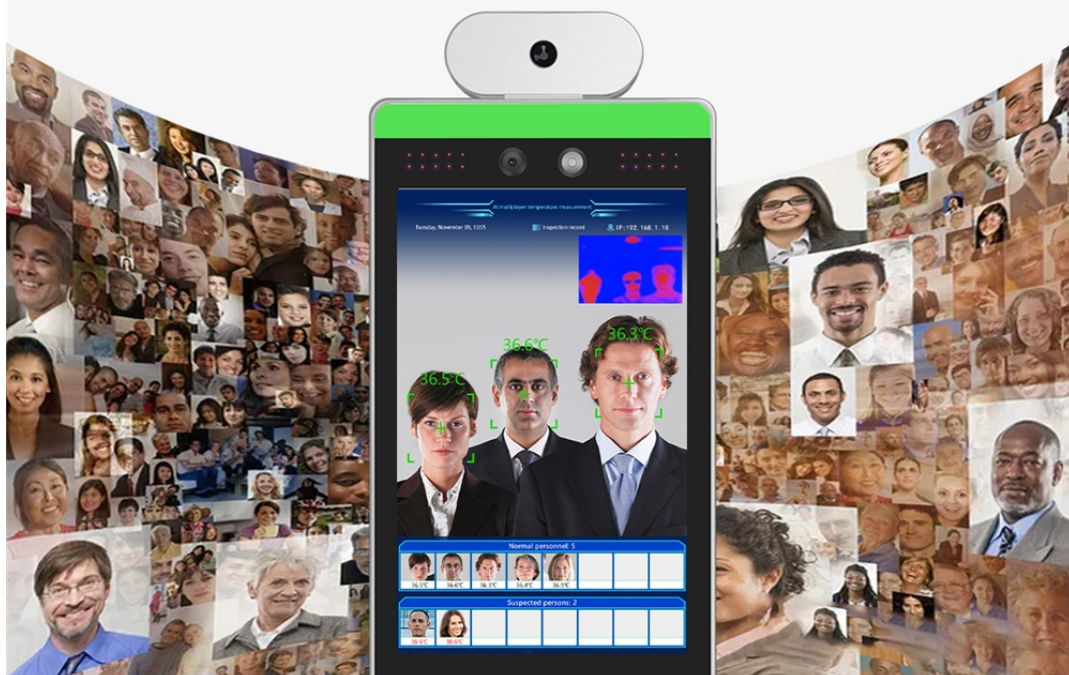
Fashion design



LED lamp with induced
temperature change

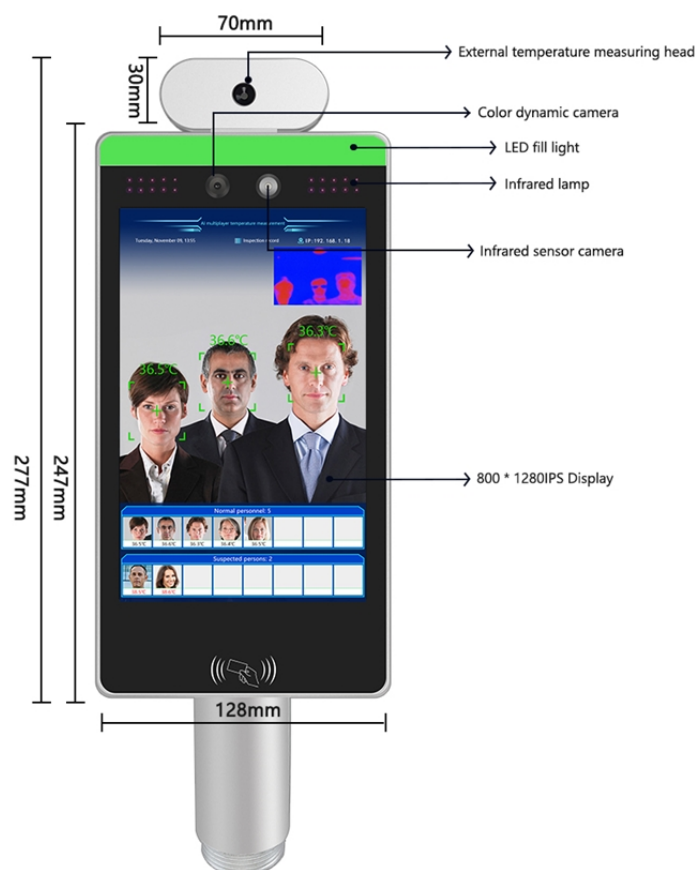
LARGE CAPACITY SPEED IDENTIFICATION

Using cutting-edge technology, large-capacity memory can record 20000 faces
Using mine vision AI processor, face recognition with extreme response of ≤ 1 second





PRODUCT SIZE DISPLAY



PRODUCT PARAMETERS

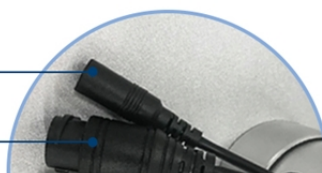
TECHNICAL PARAMETERS

Display	350 Brightness 8 *IPS Full View Display with Resolution 800*1280		
CPU	ARM Cortex A7 processor. NPU 0.6T		
Operating system	LINUX3.10		
Storage hard disk	EMMC8G		
Body material	CNC aviation grade aluminum alloy	Surface technology	Sand blasting/oxidation
Camera	2 million color 1.3 million infrared		
Camera properties	Wide dynamic backlight fixed focal length automatic exposure control white balance control automatic gain		
Communication mode	RJ45 WiFi (optional 4G)		
Authentication method	Face, mask recognition, body temperature detection		
User record	Article 20,000 (MAX)	Face storage capacity	5000(MAX)
Infrared wavelength range	8~14um	Temperature measurement mode	Non-contact
Dark light fill light	Positive white fill light	Night vision light supplement lamp	850NM night vision light supplement lamp
Normal body temperature	Green screen display	Abnormal body temperature	Red screen display
Detector	Hyman, Germany	Temperature measuring pixel	32*32
Field of view angle	33° (H) *33° (V)	Frame rate	9-20fps
Temperature measuring distance	160cm (MAX)	Measurement range	10°C~50°C
Language display	Jane, English, Japan, Korea (support on-machine switching, other languages can be customized)		
Interface	RS485, RS232, TTL, Wigan, Switching Value (Open Relay)		
Power supply	DC 12V/2A		
Temperature measuring working environment	Temperature: 15 c ~ +30 c, humidity (RH)20%-80%		
Face working environment	Temperature:-5 °C ~ +45 °C, humidity (RH)20%-80%		
Appearance size	Width 128mm * height 277mm * thickness 20mm		

INTERFACE DEFINITION DIAGRAM

DC

RJ45



Related Products

— FINGERPRINT STANDALONE CONTROL —



ACM-F1

ACM-F2

ACM-KF1

ACM-KF5



ACM-TF1

ACM-TF2

ACM-TF3

ACM-SF3



ACM-SF1

ACM-SF4

ACM-SF2

ACM-SF5



ACM-SF7

ACM-SF8

ACM-F99

ACM-F605



ACM-F6

ACM-F7 Plastic

ACM-F601

ACM-F602



ACM-F1

ACM-F2

ACM-F3

ACM-F4



ACM-F18

ACM-X6

ACM-D1

ACM-86

Q & A

Q: 1. How can I place an order?

A: Please list your needs by email. So we will send you the offer as soon as possible, after order confirmation, we will organize the production as soon as possible.

Q: 2. What about payment and shipping?

A: Commercial warranty and T / T, Paypal, Western Union.
Customers can choose by sea, air or express (DHL, FedEx, TNT UPS etc.)

Q: 3. How can I get a sample to check the quality?

A: We could provide you free sample and the freight cost paid by you.

Q: 4. How long can I wait to get the samples?

A: it depends on the quantity. Normally 3-7 days for 5000 pieces and 7-15 days for 100,000 pieces

Q: 5. Can your products be customized?

A: Almost all your products are customized, including material, size, thickness and printing. OEM orders are welcome.

Q: 6. Are you a trading company or factory?

We are one of the leading manufacturers of RFID cards / NFC tags / RFID keybod / RFID reader RFID reader and access control products in China for over 20 years.

Company Information:

20⁺ YEARS EXPERIENCE

OEM & ODM

ACCESS CONTROL SYSTEMS ONE STOP SOLUTION PROVIDER

Goldbridge is Top 10 China Manufacture On Alibaba,
Specializes In Provide Kinds Of RFID/NFC Cards, FID Tags, RFID Card Reader,
UHF Reader, Access Control System, Electromagnetic Locks, etc Since 1999



Customized
Services



Quality
Assurance



Fast
Delivery



Best After-
Sales Service

ADVANTAGE



WHY CHOOSE US?

- 1 FAST DELIVERY** Faster delivery by air by express. (DHL, UPS or Fedex)
- 2 LONG HISTORY** 20 years experience in RFID & Access Control industry
- 3 OEM ACCEPTABLE** 20 years OEM&ODM experience for 1000+ VIP client from US and Europe
- 4 HIGH QUALITY** Design and manufacture high quality products with 30 R&D engineers.



