

## Product Description



W  
r  
o  
d  
d  
l  
e  
s  
A  
R  
H  
e  
e  
m  
o  
t  
e  
c  
o  
n  
t  
r  
o  
l  
M  
G  
M  
e  
B

F  
a  
n  
e  
t  
o  
b  
a  
c  
c  
o  
p  
y  
B  
h  
u  
t  
b  
o  
n  
n  
s

M  
a  
t  
e  
r  
i  
a  
l  
A  
B  
S  
B  
a  
A  
t  
e  
V  
y

Dimensional drawing of the product

## Main Technical Parameter

Frequency: 433.92 mhz / 315 mhz/ 280-480

mhz ,other customized

Copy code :12f629 ic ; 12f683 ic

Encoding Chip: 2262, 2264, 2260, EV1527,

HCS301, HCS300, etc.

Other encoding type:

Learning code, Fixed code, Rolling code.

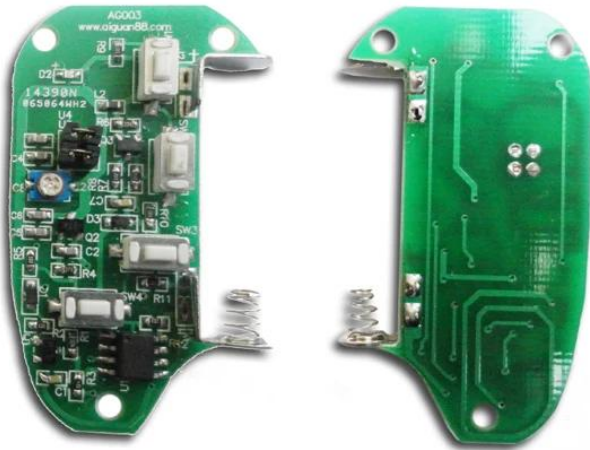
Button image:

ABCD,1234,Lock/Unlock/Mute/Light

Optional/Other Customized

Led light color: Standard Red ,Blue

Other Yellow, Red, Green, Purple etc. can be















## **Copy Way**

1). Erase the code (Delete the original code)

A.Press button "A" C and "B" at the same time until LED flash 3 times

B.Release button "B" and Keep pressing button "A" , then press button "B" 3 times,LED flash fast

C.Release button "A" C,finish code clearance

2). Duplicating (Copy code from original transmitter)

A. Put duplicator aside of original transmitter,as close as possible.

B. Press and hold button "A" of original transmitter,then press and hold button "A" of duplicator until you see the duplicator's LED flash and keep lighting

C. Release both buttons,finish code copy,copy other buttons in same way.

3). Resume

Press and hold button "C" and "D" for 3 seconds, the LED flash, all buttons return back to the latest

copy codes.



## Shipping Way

We are one of the leading exporter of RFID products in China since 2000 years . With rich international trade experience we know the international shipping very well , We know which express or air/sea line is cheap and safe to your country . We can supply various certificate for you to clean your custom to such as CO , FTA , Form F , Form E ...Ect . We wil provide our professional suggestion for your shipping . EXW , FOB , FCT , CIF , CFR ...trade term are ok for us . We can be your reliable partner for products and shipping .

## Your May Need

We can supply many kinds of door switchs . Touch , No touch , glass break ,key switch. Click above photo to find more detail .Or feel free to send us enquiry to ask the price list .



No touch Door Release Exit Button  
K2B: 86\*86mm

No touch Door Release Exit Sensor  
K9A: 115\*40mm

Door Release Button , (Stainless  
Steel, NO/NC)K5B: 86\*86mm





Door Release Button , (Steel  
Aluminium, NO), K4B: 86\*86mm

stainless steel High quality Kirsite.  
K14B: 86\*86mm

Stainless steel Door release PUSH  
button; K815B: 86\*86mm

## Our Service

- 1, Any inquiries will be replied within 24 hours
- 2, Professional manufacturer and supplier, Welcome to visit our website and our factory
- 3, OEM/ODM Available
- 4, High quality, fashion design, reasonable & competitive price, fast lead time
- 5, After-sale Service :
  - 1), All products will have been strictly quality checked in house before packing
  - 2), All products will be well packed before shipping
  - 3), All our products have 2-3 year warranty if the damage is not caused by human
- 6, Faster delivery : Around 1~ 5 days for sample order, 7~30 days for bulk order
- 7, Payment : You can pay for the order via : T/T, Western Union, Paypal
- 8, Shipping: We have strong cooperation with DHL, FEDEX, TNT, UPS, EMS, Forwarder by SEA and By AIR, You also can choose your own shipping forwarder.

## FAQ

**Q: 1. How can I place an order?**

A: Please list your requirement to us via Email. Then we will send the offer to you at earliest time,after order confirmation, we will arrange production ASAP.

**Q: 2.What about the payment and shipment?**

A: T/T ,Paypal, Western Union.

Clients can choose by sea, air or express(DHL, FedEx, TNT UPS etc.)

**Q: 3. How can i get a sample to check your quality?**

A:We could provide free sample to you, and the freight cost payed by you.

**Q:4. How long can I expect to get the samples?**

A: It depends on the quantity. Normally 3-7 days for 5000pcs and 7-15 days for 100,000pcs

**Q:5. Can your products be customized?**

A: Almost all of your products are customized ,including the materia, size, thickness and printing. OEM orders are highly welcome.

**Q:6.Are you a trading company or factory?**

We are the one of the biggest manufacturer of RFID cards/NFC tags/RFID keybod /RFID wristband□rfid reader and access control products in China more than 20 years.