

Interfoneunicador de vídeo	Rede	2.4g Conexão wifi
	Pixel	2.0mpx (1080p)
	Ângulo visual	Horizontal 140 ° de largura
	Visão noturna	Corte de IR (Corido durante o dia, preto e branco à noite)
	Memória estendida	Cartão TF com capacidade ilimitada
	Intercom	Intercomo duplex completo
	Outras funções	Detecção de movimento; Reprodução; Tire foto/vídeo; Desbloquear remotamente
	Capacidade do usuário	1000
	Usuário comum	988
	Usuário de visitante	10
Controle de acesso	Usuário de pânico	2
	Comprimento do pino	4 ~ 6 dígitos
	Proximidade Leitor de cartão	Em ou Mifare
	Radio Technology	125kHz/13,56MHz
	Leia o alcance	2 ~ 6cm
	Conexões de fiação	Saída de relé, botão de saída, alarme, contato da porta, entrada/saída Wiegand
	Revezamento	Um (não, NC, comum)
	Tempo de saída de relé ajustável	0 ~ 99 segundos (5 segundos padrão)
	Carga de saída de bloqueio	2 amp Máximo
	Interface wiegand	Versão do cartão EM: Wiegand 26 ~ 44 bits entrada e saída (Padrão de fábrica: Wiegand 26bits)
Elétrico	Saída de pino	Versão do cartão Mifare: Wiegand 26 ~ 44 bits entrada e saída (Padrão de fábrica: Wiegand 34bits)
		4 bits, 8bits (ASCII), 10 dígitos Número virtual (padrão de fábrica: 4bits)
	Tensão operacional	DC 12V
	Corrente ociosa	≤ 150mA
	Corrente ativa	≤ 250mA
	Ambiente	Interior
	Temperatura operacional	-20 ° C ~ 60 ° C (-4 ° F ~ 140 ° F)
	Umidade operacional	0%RH ~ 86%RH
	Físico	Liga de zinco
	Color	SLIVER & BLACK
	Dimensões	L145 X W68 X H25 (mm)
	Peso unitário	400G
	Peso de envio	510G



2.4G WiFi network, Mobile APP Intercom

Download APP by Searching
TuyaSmart or Smartlife for both
iOS & Android





Support
Tuya APP



Max 2.0Mpx



140° Wide Angle



Touch Button



Multi-users



Support TF Card



Monitoring



Video Talking



Night Vision



Remote
Unlocking

2.0Mpx(1080P) and
140° wide angle camera

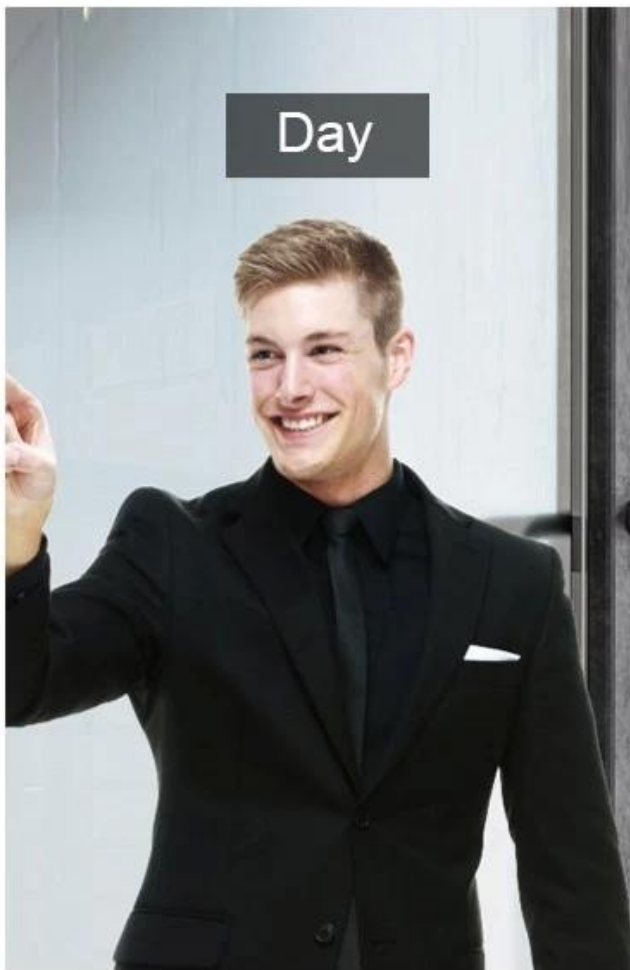


Uses Rain Cover for Outdoor



Night Vision: IR-CUT

(Colorful at daytime, black and white at night)



Three Access Way

Mobile, Card, PIN



User Capacity: 1000

Common User: 988

Visitor User: 10

Panic User: 2



Data 0

Data 1



Wiegand input & output

Product size



20⁺ YEARS EXPERIENCE

OEM & ODM

ACCESS CONTROL SYSTEMS ONE STOP SOLUTION PROVIDER

Goldbridge is Top 10 China Manufacture On Alibaba,
Specializes In Provide Kinds Of RFID/NFC Cards, FID Tags, RFID Card Reader,
UHF Reader, Access Control System, Electromagnetic Locks, etc Since 1999



Customized
Services



Quality
Assurance



Fast
Delivery



Best After-
Sales Service

ADVANTAGE



WHY CHOOSE US?

- 1 FAST DELIVERY** Faster delivery by air by express. (DHL, UPS or Fedex)
- 2 LONG HISTORY** 20 years experience in RFID & Access Control industry
- 3 OEM ACCEPTABLE** 20 years OEM&ODM experience for 1000 + VIP client from US and Europe
- 4 HIGH QUALITY** Design and manufacture high quality products with 30 R&D engineers.



Supplier's Company

OUR FACTORY



- **Access Control and RFID Reader Production Line:**
- Monthly production quantity is up to 50,000pcs , We are Provides OEM&ODM services including product research and development, LOGO printing, customized.etc



- **Electromagnetic lock & Smart Door Lock Production Line :**
- Monthly production quantity is up to 100,000pcs ,
- Our factory is built with modern manufacture environment, facilities, equipment and professional operation technicians.
- Goldbridge Provides OEM&ODM services including product research and development, LOGO printing and product box customized.



- **RFID & NFC Cards & Tags Production Line :**
- RFID Tag, Wristband, Keyfob: 11,000,000pcs (monthly output)
- Four Production Lines For Smart Card, PVC Card, Prelam Sheet: 20,000,000pcs (monthly output)
- Goldbridge Provides OEM&ODM services for LOGO printing, development, customized.

APPLICATION

Bus, supermarket,school, government, hospital, factory



CERTIFICATE



Access Control CE Access Control RoHS EM Lock EMC Certificate EM Lock ROHS Certificate



RFID Card Reader CE RFID Card Reader RoHS UHF Reader CE Certificate UHF Reader ROHS

PRODUCT CATEGORY

RFID / NFC SMART CARD

Be customized according to you need

Fit for systems of transport, E-payment, Access Control, Event, Loyalty, ect.

[View More](#)



ACCESS CONTROL SYSTEM

Security for All: Network Access Control Board ,Standalone Access Controller, Biometric Access Control, T&A time attendance, Facial Access Control

[View More](#)

RFID & LONG RANGE UHF READER

20+ Years of professional Experience in production of rfid uhf hardware

- UHF desktop reader writer,
- UHF integrated reader,
- UHF R2000 fixed reader,

[View More](#)



ELECTRONMAGNETIC LOCK

Professional Electric Locks Manufacturer In China

Electromagnetic lock with OEM & ODM since 1999 60KG /110KG /180KG /280KG /350KG /500KG

[View More](#)

FAQ

Q1 How can I place an order?

A1 Click start to order or list your requirement to us by email. Then we will send the offer to you ASAP, after the order confirmed, we will arrange production ASAP.

Q2 What about the payment and shipment?

A3 T/T , Paypal, Western Union etc.
You can choose your agent or via our agent by sea, air or express (DHL,FedEx, TNT UPS etc.)

Q4 How can I get a sample to check your quality?

A4 We could provide the sample to you, pls check the sample cost and freight cost with us.

Q5 How long can I expect to get the goods?

A5 It depends on the quantity and shipping way. You can check with us before ordered.

Q6 Can your products be customized?

A6 Almost all of our products are customized , including the material, size, thickness and printing. OEM orders are highly welcome.



[Contact Us](#)



[BACK TO HOMEPAGE >](#)