

<b>Video interkom</b>	<b>Ağ</b>	<b>2.4g WiFi Bağlantısı</b>
	<b>Piksel</b>	<b>2.0mpx (1080p)</b>
	<b>Görüş açısı</b>	<b>Yatay 140 ° geniş aç</b>
	<b>Gece Görüşü</b>	<b>Ir-kesim (gündüz renkli, geceleri siyah beyaz)</b>
	<b>Genişletilmiş bellek</b>	<b>Sınırsız kapasiteli TF kartı</b>
	<b>İnterkom</b>	<b>Tam dubleks ses interkom</b>
	<b>Diğer işlevler</b>	<b>Hareket algılama; Playback; Resim/video çek; Uzaktan kilidini aç</b>
	<b>Kullanıcı kapasitesi</b>	<b>1000</b>
	Ortak kullanıcı	988
	Ziyaretçi kullanıcısı	10
<b>Erişim Kontrolü</b>	Panik kullanıcısı	2
	<b>Pim uzunluğu</b>	<b>4 ~ 6 basamak</b>
	<b>Yakınlık Kart okuyucusu</b>	<b>EM veya Mifare</b>
	Radyo teknolojisi	125khz/13.56mhz
	Okuma Aralığı	2 ~ 6 cm
	<b>Kablo bağlantıları</b>	<b>Röle çıkışı, çıkış düğmesi, alarm, kapı kontağı, wiegand giriş/çıkışı</b>
	<b>Röle</b>	<b>Bir (hayır, NC, Common)</b>
	Ayarlanabilir röle çıkış süresi	0 ~ 99 saniye (Varsayılan 5 saniye)
	Çıktı yükü kilit	Maksimum 2 Amp
	<b>Wiegand arayüzü</b>	<b>EM Kart Versiyonu: Wiegand 26 ~ 44 Bit Giriş ve Çıktı</b> (Fabrika Varsayılan: Wiegand 26bits)
<b>Elektrikli</b>		<b>Mifare Kart Versiyonu: Wiegand 26 ~ 44 Bit Giriş ve Çıktı</b> (Fabrika Varsayılan: Wiegand 34bits)
	Pin çıkışı	4 bit, 8bit (ASCII), 10 basamaklı sanal numara (fabrika varsayılan: 4bits)
	<b>Çalışma voltajı</b>	<b>DC 12V</b>
	Boş akım	≤ 150mA
	Aktif akım	≤ 250mA
	<b>Çevre</b>	<b>Kapalı</b>
	Çalışma sıcaklığı	-20 ° C ~ 60 ° C (-4 ° F ~ 140 ° F)
	Çalışma nemi	%0 RH ~%86 RH
	<b>Fiziksel</b>	<b>Çinko alaşımı</b>
	Renk	Şerit ve siyah
	Boyutlar	L145 x W68 x H25 (mm)
	Birim ağırlık	400g
	Nakliye ağırlığı	510g



## 2.4G WiFi network, Mobile APP Intercom

Download APP by Searching  
TuyaSmart or Smartlife for both  
iOS & Android





Support  
Tuya APP



Max 2.0Mpx



140° Wide Angle



Touch Button



Multi-users



Support TF Card



Monitoring



Video Talking



Night Vision



Remote  
Unlocking

2.0Mpx(1080P) and  
**140°** wide angle camera

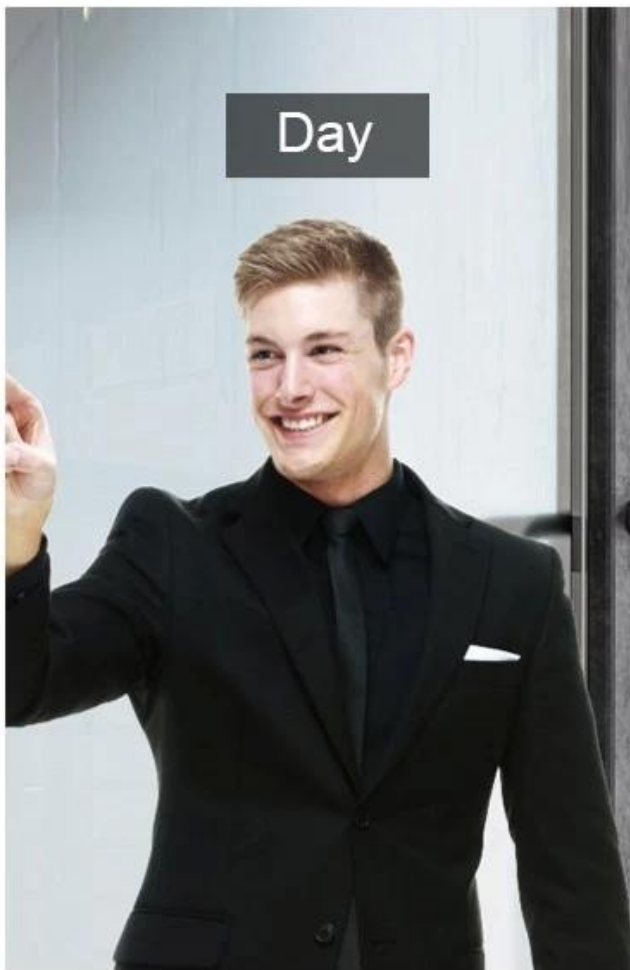


**Uses Rain Cover for Outdoor**



# Night Vision: IR-CUT

(Colorful at daytime, black and white at night)



# Three Access Way

Mobile, Card, PIN





---

User Capacity: 1000

Common User: 988

Visitor User: 10

Panic User: 2



Data 0

Data 1



Wiegand input & output

## Product size







# 20<sup>+</sup> YEARS EXPERIENCE

## OEM & ODM

ACCESS CONTROL SYSTEMS ONE STOP SOLUTION PROVIDER

Goldbridge is Top 10 China Manufacture On Alibaba,  
Specializes In Provide Kinds Of RFID/NFC Cards, FID Tags, RFID Card Reader,  
UHF Reader, Access Control System, Electromagnetic Locks, etc Since 1999



Customized  
Services



Quality  
Assurance



Fast  
Delivery



Best After-  
Sales Service

## ADVANTAGE



### WHY CHOOSE US?

- 1 FAST DELIVERY** Faster delivery by air by express. (DHL, UPS or Fedex)
- 2 LONG HISTORY** 20 years experience in RFID & Access Control industry
- 3 OEM ACCEPTABLE** 20 years OEM&ODM experience for 1000 + VIP client from US and Europe
- 4 HIGH QUALITY** Design and manufacture high quality products with 30 R&D engineers.



Supplier's Company

## OUR FACTORY



- **Access Control and RFID Reader Production Line:**
- Monthly production quantity is up to 50,000pcs , We are Provides OEM&ODM services including product research and development, LOGO printing, customized.etc



- **Electromagnetic lock & Smart Door Lock Production Line :**
- Monthly production quantity is up to 100,000pcs ,
- Our factory is built with modern manufacture environment, facilities, equipment and professional operation technicians.
- Goldbridge Provides OEM&ODM services including product research and development, LOGO printing and product box customized.



- **RFID & NFC Cards & Tags Production Line :**
- RFID Tag, Wristband, Keyfob: 11,000,000pcs (monthly output)
- Four Production Lines For Smart Card, PVC Card, Prelam Sheet: 20,000,000pcs (monthly output)
- Goldbridge Provides OEM&ODM services for LOGO printing, development, customized.

## APPLICATION

Bus, supermarket,school, government, hospital, factory



## CERTIFICATE



Access Control CE    Access Control RoHS    EM Lock EMC Certificate    EM Lock ROHS Certificate



RFID Card Reader CE    RFID Card Reader RoHS    UHF Reader CE Certificate    UHF Reader ROHS

## PRODUCT CATEGORY

### RFID / NFC SMART CARD

Be customized according to you need

Fit for systems of transport, E-payment, Access Control, Event, Loyalty, ect.

[View More](#)



### ACCESS CONTROL SYSTEM

Security for All: Network Access Control Board ,Standalone Access Controller, Biometric Access Control, T&A time attendance, Facial Access Control

[View More](#)



### RFID & LONG RANGE UHF READER

20+ Years of professional Experience in production of rfid uhf hardware

- UHF desktop reader writer,
- UHF integrated reader,
- UHF R2000 fixed reader,

[View More](#)



### ELECTRONMAGNETIC LOCK

Professional Electric Locks Manufacturer In China

Electromagnetic lock with OEM & ODM since 1999 60KG /110KG /180KG /280KG /350KG /500KG

[View More](#)



## FAQ

#### Q1 How can I place an order?

A1 Click start to order or list your requirement to us by email. Then we will send the offer to you ASAP, after the order confirmed, we will arrange production ASAP.

#### Q2 What about the payment and shipment?

A3 T/T , Paypal, Western Union etc.  
You can choose your agent or via our agent by sea, air or express (DHL,FedEx, TNT UPS etc.)

#### Q4 How can I get a sample to check your quality?

A4 We could provide the sample to you, pls check the sample cost and freight cost with us.

#### Q5 How long can I expect to get the goods?

A5 It depends on the quantity and shipping way. You can check with us before ordered.

#### Q6 Can your products be customized?

A6 Almost all of our products are customized , including the material, size, thickness and printing. OEM orders are highly welcome.



[Contact Us](#)



[BACK TO HOMEPAGE >](#)